

# FOR LEASE

**1,052 SF | \$2.15/SF/MO/NNN**

## NorthWest Crossing Office Suite

2796 NW Clearwater Dr., Suite A, Bend, OR 97703



### PROPERTY DETAILS

|                    |   |
|--------------------|---|
| <b>Suite A:</b>    | 1,052 SF  |
| <b>Lease Rate:</b> | \$2.15/SF/Mo. NNN                                       |
| <b>NNNs:</b>       | Est. at \$0.80/SF/Mo.<br>(includes gas and electricity) |
| <b>Bldg. Size:</b> | 8,573 SF  |
| <b>Zoning:</b>     | Mixed Employment (ME)                                   |

### HIGHLIGHTS

- Suite A consists of three private offices, a storage room, break room, copy room, and private restroom
- Near shops and restaurants
- 30 parking stalls including two handicap spaces
- On the corner of Clearwater Drive and Charbonneau Street

Jay Lyons, SIOR, CCIM | Grant Schultz, SIOR, CCIM

Graham Dent, SIOR

600 SW Columbia St., Ste. 6100 | Bend, OR 97702

**541.383.2444** | [www.CompassCommercial.com](http://www.CompassCommercial.com)

**COMPASS**  
COMMERCIAL

**REAL  
ESTATE  
SERVICES**



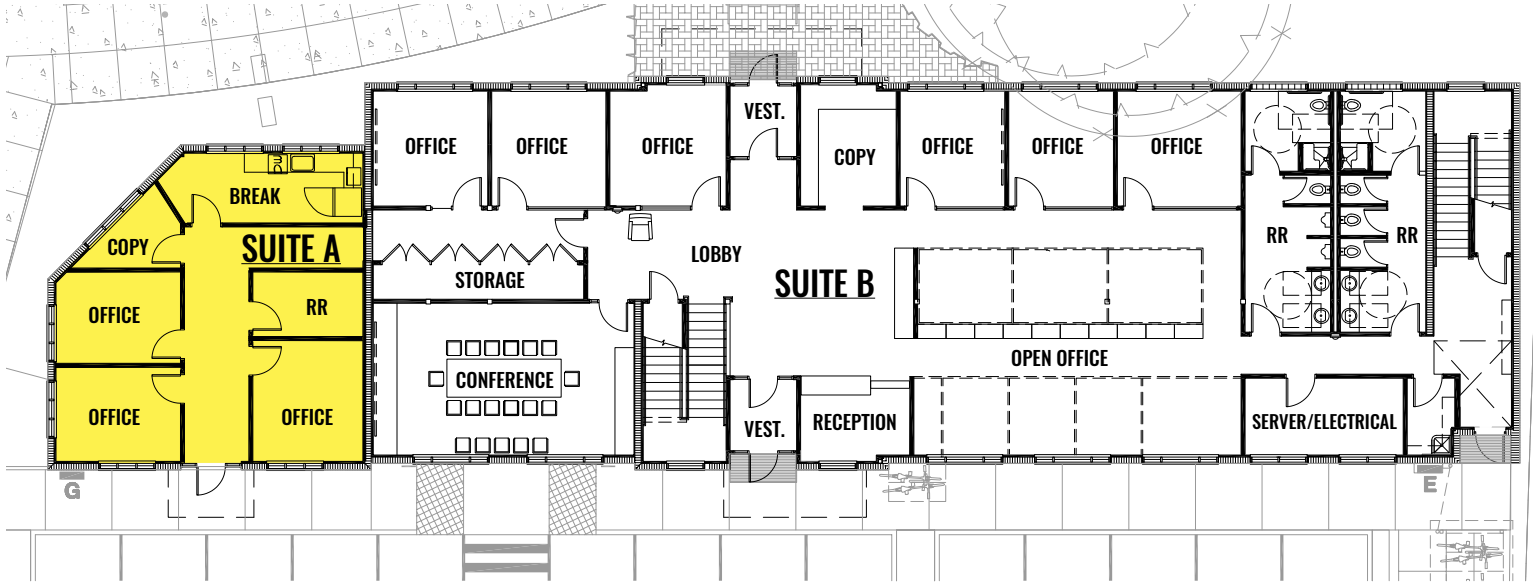
# FOR LEASE

1,052 SF | \$2.15/SF/MO/NNN

## NorthWest Crossing Office Suite

2796 NW Clearwater Dr., Suite A, Bend, OR 97703

### FLOOR PLAN



Brokers are licensed in the state of Oregon. This information has been furnished from sources we deem reliable, but for which we assume no liability. This is an exclusive listing. The information contained herein is given in confidence with the understanding that all negotiations pertaining to this property be handled through Compass Commercial Real Estate Services. All measurements are approximate.



**Jay Lyons, SIOR, CCIM**  
Partner, Principal Broker  
Cell 541.410.6519  
jlyons@compasscommercial.com



**Grant Schultz, SIOR, CCIM**  
Broker  
Cell 541.480.9873  
gschultz@compasscommercial.com



**Graham Dent, SIOR**  
Partner, Broker  
Cell 541.639.6515  
gdent@compasscommercial.com

**COMPASS COMMERCIAL**  
**REAL ESTATE SERVICES**