

MODERN CLASS A OFFICE CONDO

950 RESERVE DRIVE Suite #100
ROSEVILLE CA 95678

FOR LEASE

+/-3,150 Square Feet
\$1.85/SF MG



Exclusive Agent

Tony Wood, SIOR

Director of Leasing and Sales

916.390.1274

tony@tonywoodcommercial.com

CA DRE #00549071

exp[®]
COMMERCIAL

MODERN CLASS A OFFICE CONDO

FOR LEASE

950 RESERVE DR #100, ROSEVILLE CA 95678

PROPERTY INFORMATION

- **+/-3,150 Square Feet**
- **Lease Rate: \$1.85/SF Modified Gross**
- Six Private Offices, Two restrooms, Kitchen & 2 Open Areas + Upstairs Large enclosed Loft Area with two work office areas
- Located Directly Adjacent to The Fountains at Roseville Shopping Center
- Walking Distance to Westfield Galleria
- Minutes from Interstate 80 and Highway 65

Modern style, one of a kind unit, Class A Commercial Office Condo with $\pm 3,150$ Square Feet. Located adjacent to one of Roseville's most popular high-end shopping centers, within walking distance to the Roseville Galleria, minutes from I-80 & Hwy 65 and ready for immediate occupancy.



The information contained herein has been obtained from sources believed to be reliable; however, exp Commercial has not verified, and will not verify, any of the information contained herein, nor has exp Commercial conducted any investigation regarding these matters and makes no warranty or representation whatsoever regarding the accuracy or completeness of the information provided. All potential buyers or tenants must take appropriate measures to verify all of the information set forth herein.

Exclusive Agents:

Tony Wood, SIOR
Director of Leasing and Sales
916.390.1274 tony@tonywoodcommercial.com
CA DRE #00549071

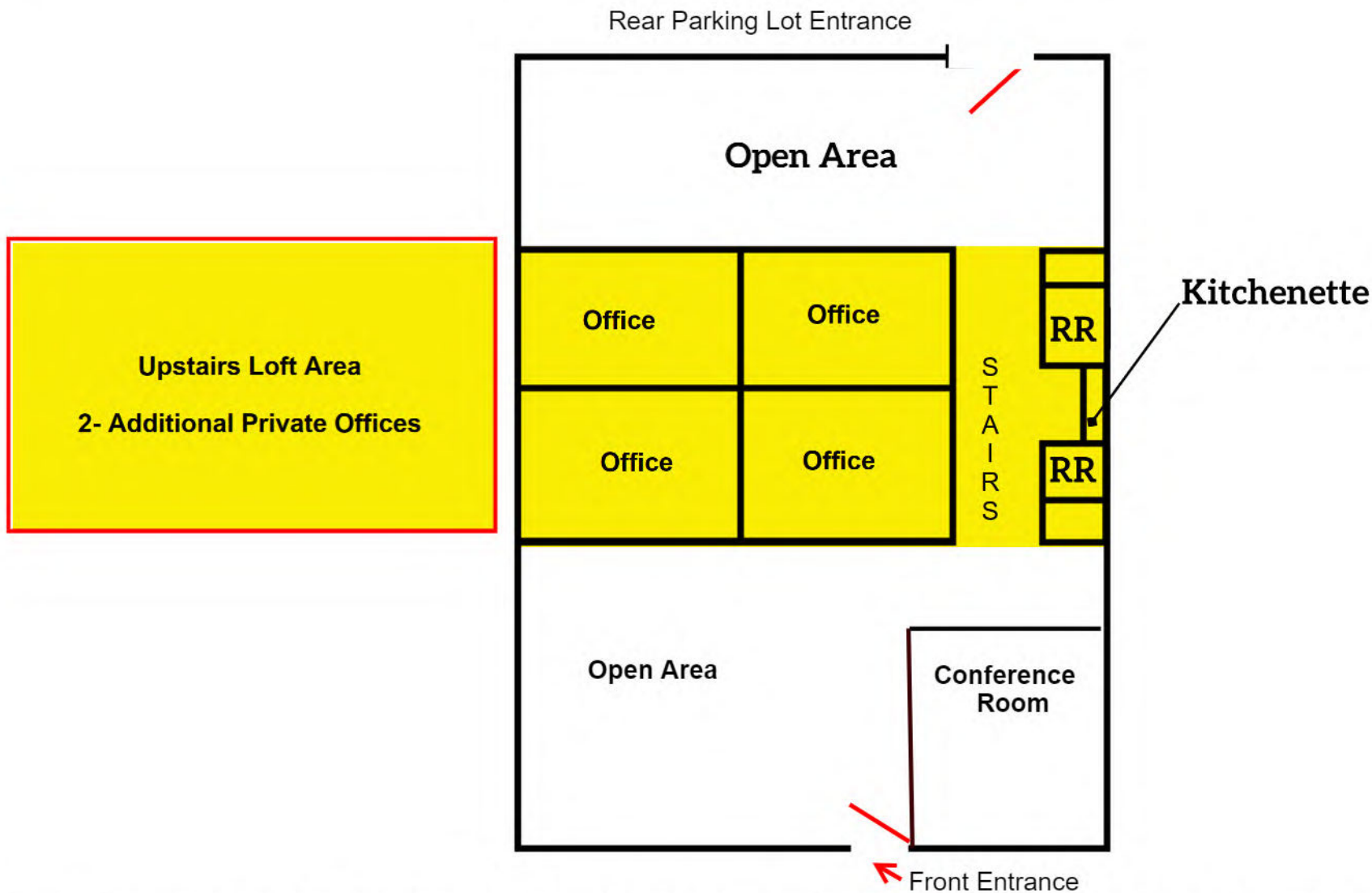
exp[®]
COMMERCIAL

MODERN CLASS A OFFICE CONDO

FOR LEASE

950 RESERVE DR #100, ROSEVILLE CA 95678

FLOOR PLAN



The information contained herein has been obtained from sources believed to be reliable; however, exp Commercial has not verified, and will not verify, any of the information contained herein, nor has exp Commercial conducted any investigation regarding these matters and makes no warranty or representation whatsoever regarding the accuracy or completeness of the information provided. All potential buyers or tenants must take appropriate measures to verify all of the information set forth herein.



950
#100



950 Reserve Drive #100







MODERN CLASS A OFFICE CONDO

FOR LEASE

950 RESERVE DR #100, ROSEVILLE CA 95678

RETAIL AERIAL MAP



For Additional information contact:

Exclusive Agent:

**Tony Wood, SIOR, Director of Leasing and Sales
exp Commercial Real Estate Services**

Phone: 916.390.1274

Email: Tony@TonyWoodCommercial.com

CA DRE Lic.#00549071

WWW.TonyWoodCommercial.com



The information contained herein has been obtained from sources believed to be reliable; however, exp Commercial has not verified, and will not verify, any of the information contained herein, nor has exp Commercial conducted any investigation regarding these matters and makes no warranty or representation whatsoever regarding the accuracy or completeness of the information provided. All potential buyers or tenants must take appropriate measures to verify all of the information set forth herein