

FOR  
LEASE

13112 Newport Ave  
TUSTIN, CA 92780

# Prime Medical Office and Retail Space

**PACKERS  
SQUARE**

**DAN BACANI**  
Principal  
626.242.7790

[dbacani@lee-associates.com](mailto:dbacani@lee-associates.com)  
License ID 01385413

**GREGORY KHO**  
Associate  
213.400.0654

[gregory.kho@lee-associates.com](mailto:gregory.kho@lee-associates.com)  
License ID 02033257

# 01 EXECUTIVE SUMMARY



## AVAILABLE SUITES:

|                |  |
|----------------|--|
| Suite 132-100: | 7,600 SF Medical Office                  |
| Suite 132-230: | 1,759 SF Medical Office                  |
| Suite 13152-C: | 3,640 SF Medical Office / General Retail |
| Suite E:       | 1,225 SF General Retail                  |
| Suite G:       | 1,210 SF General Retail                  |

## PROPERTY DETAILS:

|                           |  |
|---------------------------|--|
| <b>Asking Rate:</b>       | \$2.25 General Retail, NNN<br>\$3.00 Medical Office, NNN |
| <b>Terms:</b>             | 5 years  |
| <b>Total Building SF:</b> | ±49,931 SF   |
| <b>Lot Size:</b>          | ±198,198 SF  |
| <b>Zoning:</b>            | PC Com   |
| <b>Year Built:</b>        | 1979/2005  |
| <b>APN:</b>               | 500-111-10, 03, 11, 04                                   |
| <b>Parking:</b>           | 172 Parking Spaces                                       |

## PROPERTY HIGHLIGHTS:

- **Proximity to Retail Commercial Centers:** Located near the bustling Tustin Market Place, Tustin Ranch Golf Club, and Tustin Plaza, Packers Square is located on the active corner of Newport Ave and Irvine Blvd, drawing consistent local and visitor vehicle traffic of over 35,000 per day.
- **Diverse Tenant Mix:** A varied range of tenants creates synergy and draws a broad customer base, benefiting all businesses with increased exposure and foot traffic. Packers Square is suitable for a wide range of businesses, from specialty retail to personal care services and medical offices.
- **Ample Parking:** With abundant parking options, Packers Square ensures convenient access for customers, perfect for high-traffic retail and medical uses alike.
- **Easy Access for Medical and Health Services:** Packers Square's convenient location and ample parking make it an attractive spot for medical and wellness providers, catering to the area's demand for accessible healthcare options.
- **Strong Demographics:** Situated in a high-income area with an average household income exceeding \$100,000, Packers Square sees consistent daytime foot traffic, especially from nearby commercial and residential areas.

# 02 PROPERTY PHOTOS



# 02 PROPERTY PHOTOS





# 02 PROPERTY PHOTOS

**PACKERS  
SQUARE**

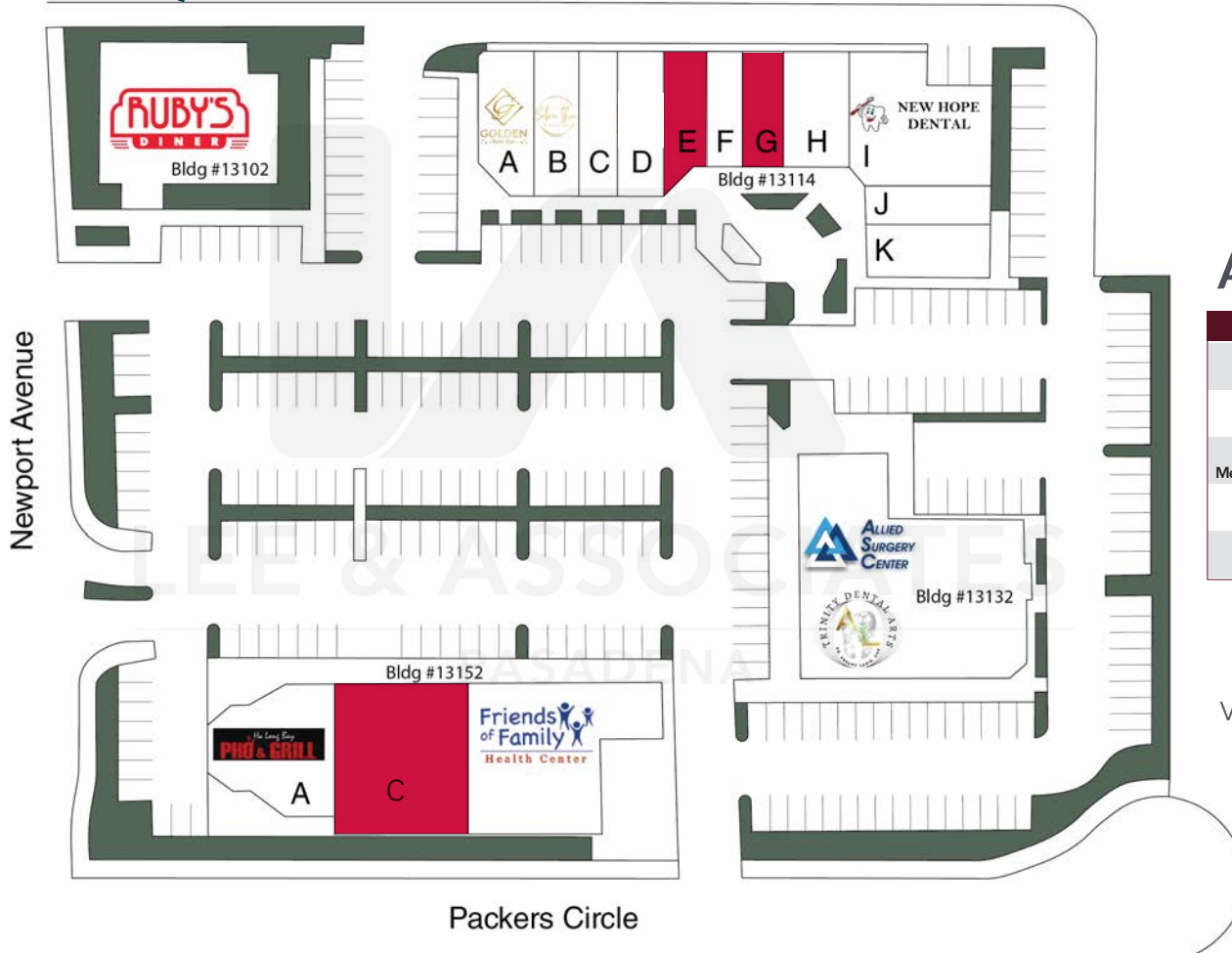


The information contained herein is obtained from sources believed to be reliable. However, we have not verified it and make no guarantees, warranties or representations as to the completeness or accuracy thereof. The presentation of this property is used for example and is submitted subject to errors, omissions, change of price or conditions, and is subject to prior sale, lease or withdrawal without notice. [www.lee-associates.com](http://www.lee-associates.com)

FOR LEASE | PACKERS SQUARE |

# PACKERS SQUARE

13112 Newport Ave, Tustin, CA 92780



## AVAILABLE SPACES

| SUITE                                  | STATUS    | SIZE (SF) | LEASE RATE    | LEASE TYPE        | DESCRIPTION                            |
|--|-----------|-----------|---------------|-------------------|--|
| Suite 132-100<br>Med Office            | AVAILABLE | 7,600     | \$2.50 SF/mth | Est \$0.75<br>NNN | Former Doctor's Office                 |
| Suite 132-230<br>Med Office            | AVAILABLE | 1,759     | \$3.00 SF/mth | Est \$0.75<br>NNN | Former Dentist Office                  |
| Suite 13152-C<br>Med Office/Gen Retail | AVAILABLE | 3,640     | \$2.50 SF/mth | Est \$0.75<br>NNN | Medical Office / General<br>Retail Use |
| Suite E<br>Gen Retail                  | AVAILABLE | 1,225     | \$2.25 SF/mth | Est \$0.75<br>NNN | Former Tanning Salon                   |
| Suite G<br>Gen Retail                  | AVAILABLE | 1,210     | \$2.25 SF/mth | Est \$0.75<br>NNN | Former Clothing Store                  |

VACANCY LEGEND:



DRAWING NOT TO SCALE

# 02 AERIAL OVERVIEW



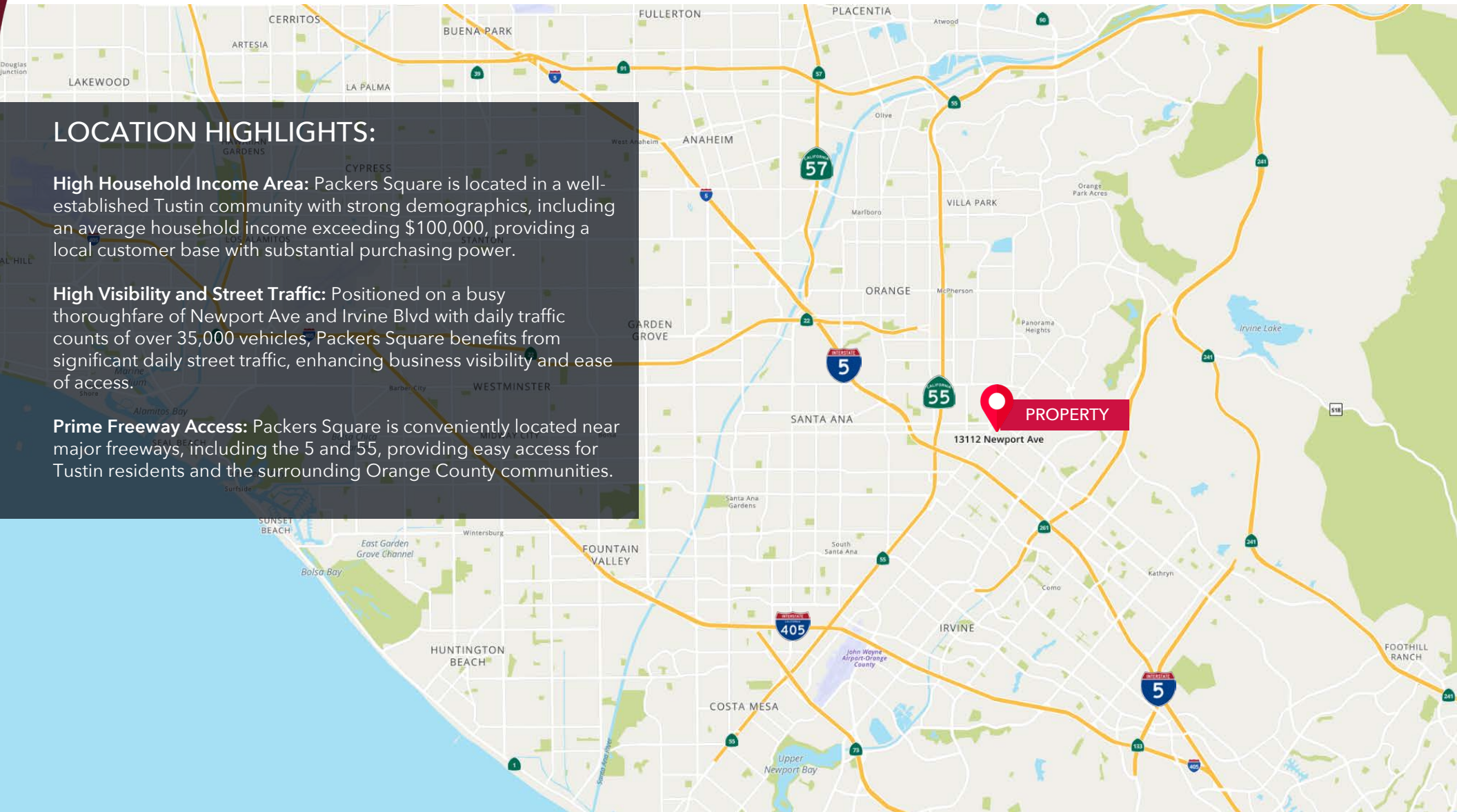


## LOCATION HIGHLIGHTS:

**High Household Income Area:** Packers Square is located in a well-established Tustin community with strong demographics, including an average household income exceeding \$100,000, providing a local customer base with substantial purchasing power.

**High Visibility and Street Traffic:** Positioned on a busy thoroughfare of Newport Ave and Irvine Blvd with daily traffic counts of over 35,000 vehicles, Packers Square benefits from significant daily street traffic, enhancing business visibility and ease of access.

**Prime Freeway Access:** Packers Square is conveniently located near major freeways, including the 5 and 55, providing easy access for Tustin residents and the surrounding Orange County communities.



# TUSTIN OVERVIEW

|            | 1 Mile | 3 Mile  | 5 Mile  |
|------------|--------|---------|---------|
| Population | 18,541 | 201,623 | 548,516 |
| Median Age | 40.6   | 37.7    | 36.8    |



FOR  
LEASE

13112 Newport Ave  
TUSTIN, CA 92780

**DAN BACANI**

Principal

626.242.7790

dbacani@lee-associates.com

License ID 01385413

**GREGORY KHO**

Associate

213.400.0654

gregory.kho@lee-associates.com

License ID 02033257



**LEE &  
ASSOCIATES**

COMMERCIAL REAL ESTATE SERVICES  
PASADENA

Lee & Associates - Pasadena, Inc.

1055 E. Colorado Blvd., Suite 330

Pasadena CA 91106

lee-pasadena.com

Corporate ID 02059558

