

BRISTOL HWY OFFICE & WAREHOUSE

4504 Bristol Highway
Johnson City, TN 37601

Location

Located between Johnson City and Piney Flats on
Bristol Hwy/Hwy 11E

Available for Lease

Suite 100: 1,629+/- SF office
\$11/SF/year NNN

Highlights

Highly-visible on busy highway

Portable loading dock available to all tenants

Zoned B-4 & CO

Suite 100

Waiting area, 5 offices, break area, storage/utility closet
and men's and women's restrooms

Demographics

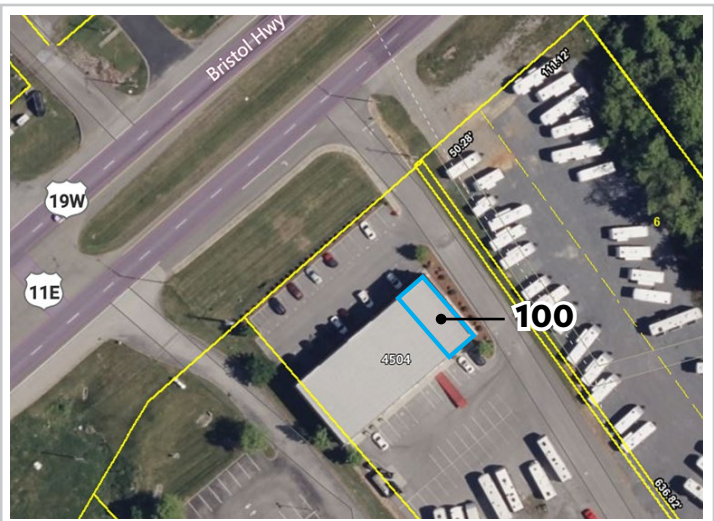
(2025 Est.)	3 mile	5 mile	10 mile
Population	11,584	42,227	170,235
Median HH Income	\$82,810	\$76,103	\$62,381
Median Age	43.4	44.1	41.9

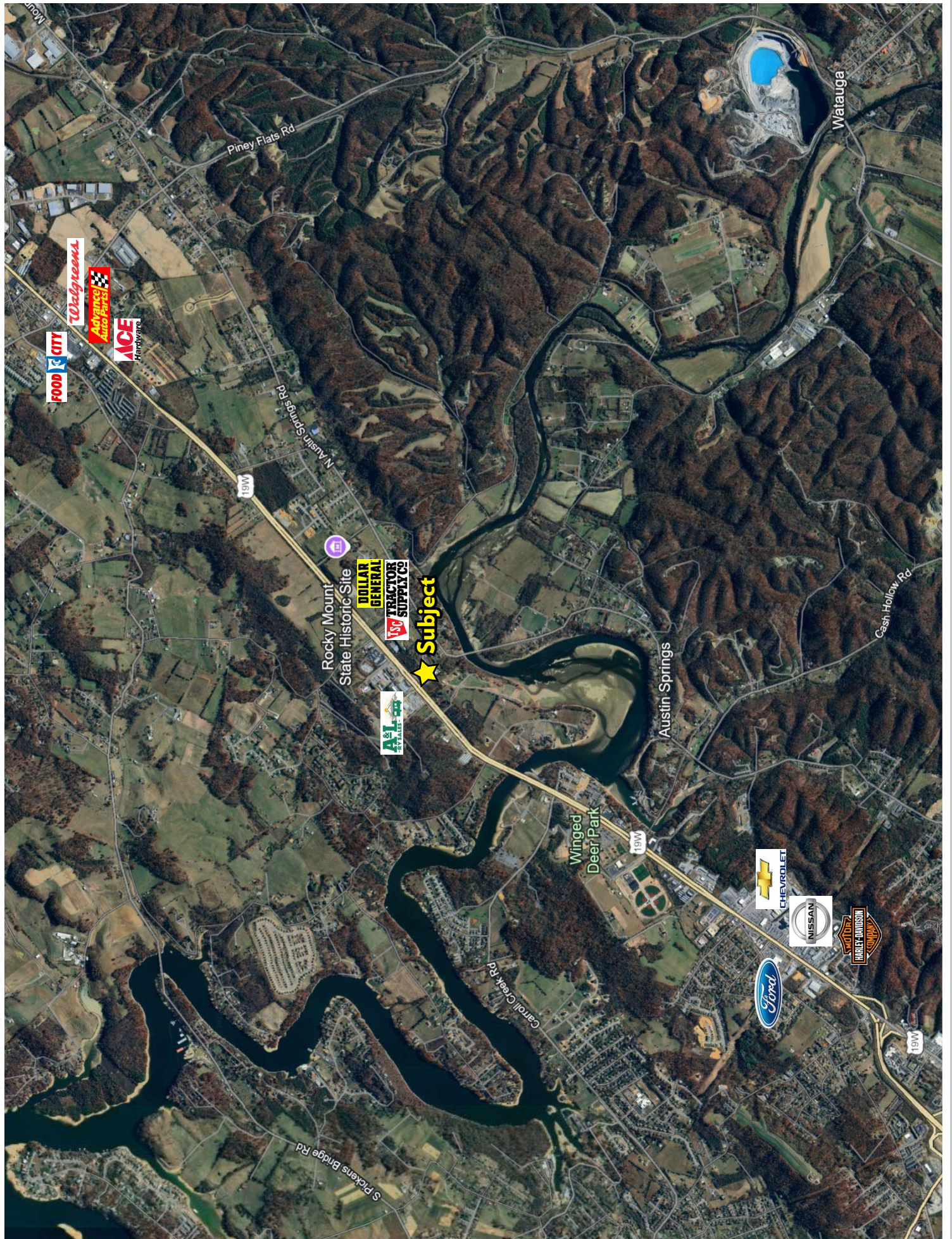
Contact

John Speropulos, CCIM, SIOR
john@mitchcox.com

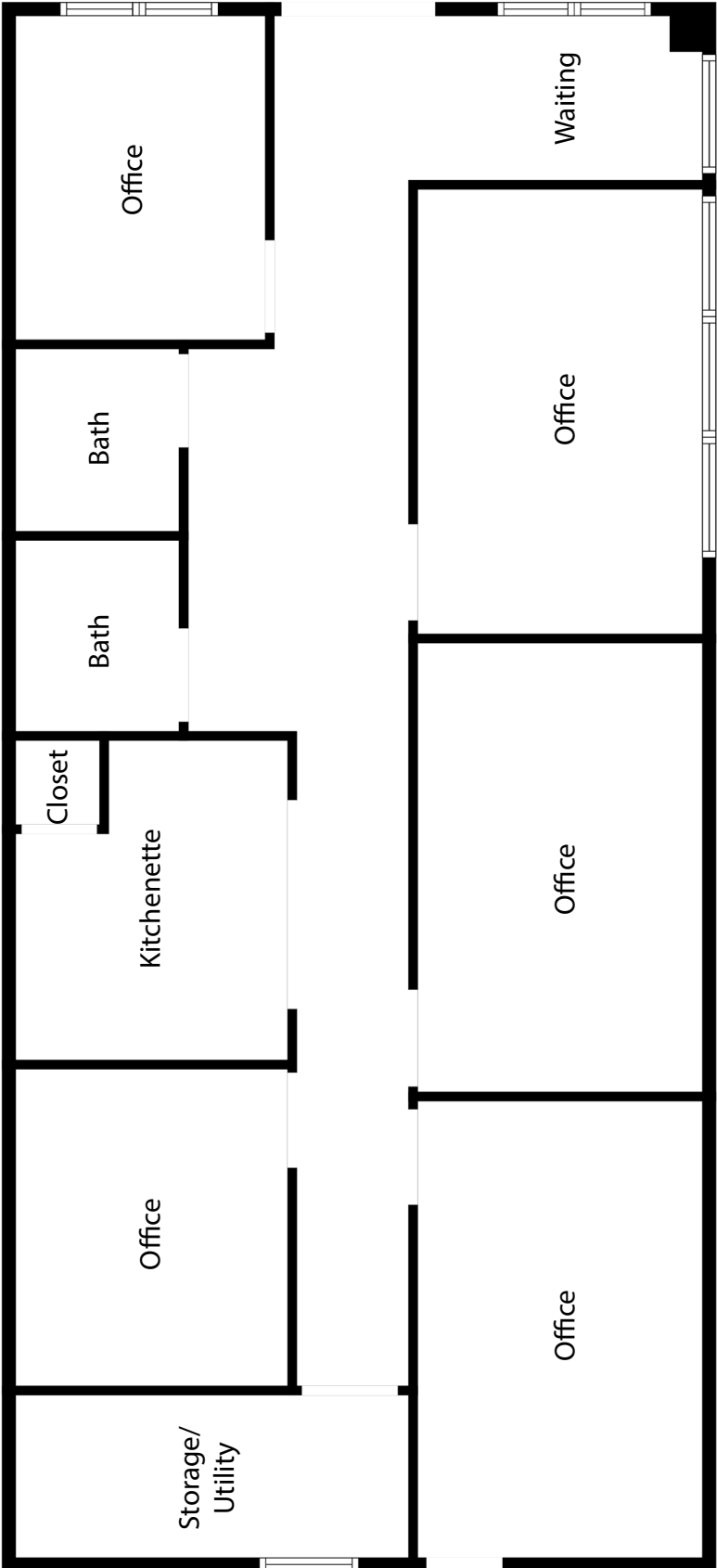
Marc Murphy, CCIM
mmurphy@mitchcox.com

📞 423-282-6582 | 📠 423-282-5903
www.mitchcox.com





Suite 100
1,629^{+/-} SF





MITCH COX
REALTOR, INC.

2304 Silverdale Drive, Suite 200, Johnson City, TN 37601
423-282-6582 (o) 423-282-5903 (f) www.mitchcox.com