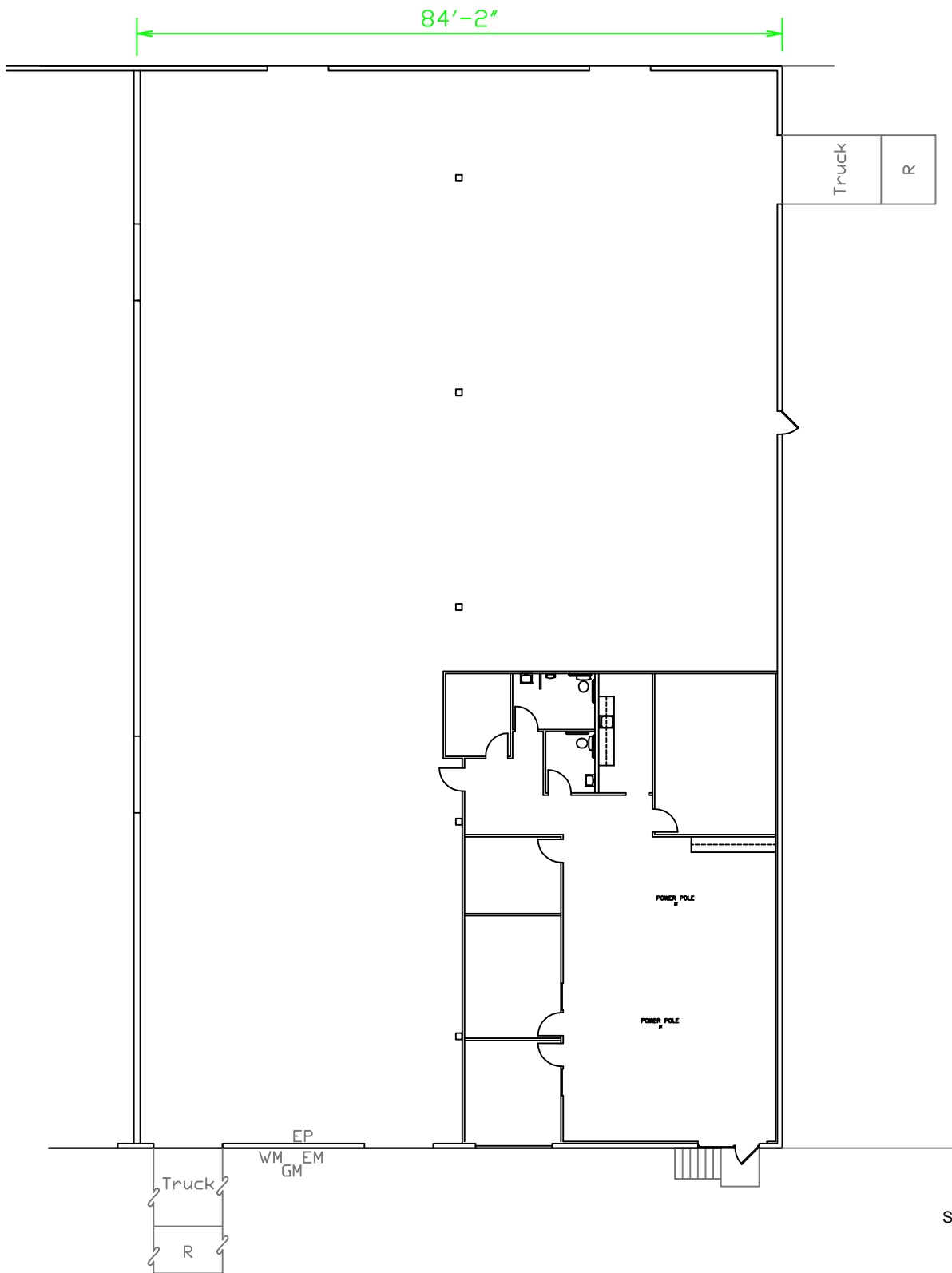


AVAILABLE

9211 Slack Road, Shreveport, Louisiana



SPACE SUMMARY

LEASABLE AREA	11,866 sq. ft.
OFFICE AREA 9207	2,560 sq. ft.
TRUCK DOORS	2
RAIL DOORS	2

BUILDING SUMMARY

AREA	47,447 sq. ft.
LAND AREA	2,221,560 sq. ft.
CLEAR CLG. HT. +/-	20'
CONSTRUCTION	Tilt Wall
LIGHTING	Fluor/MV
SPRINKLER	100%
SLAB +/-	5"

LEGEND

GM	Gas Meter
WM	Water Meter
EM	Electric Meter
EP	Electric Panel

For Information Contact:

SEALY REAL ESTATE SERVICES
318-222-8700

333 Texas Street, Suite 1050 ■ Shreveport, Louisiana 71101

