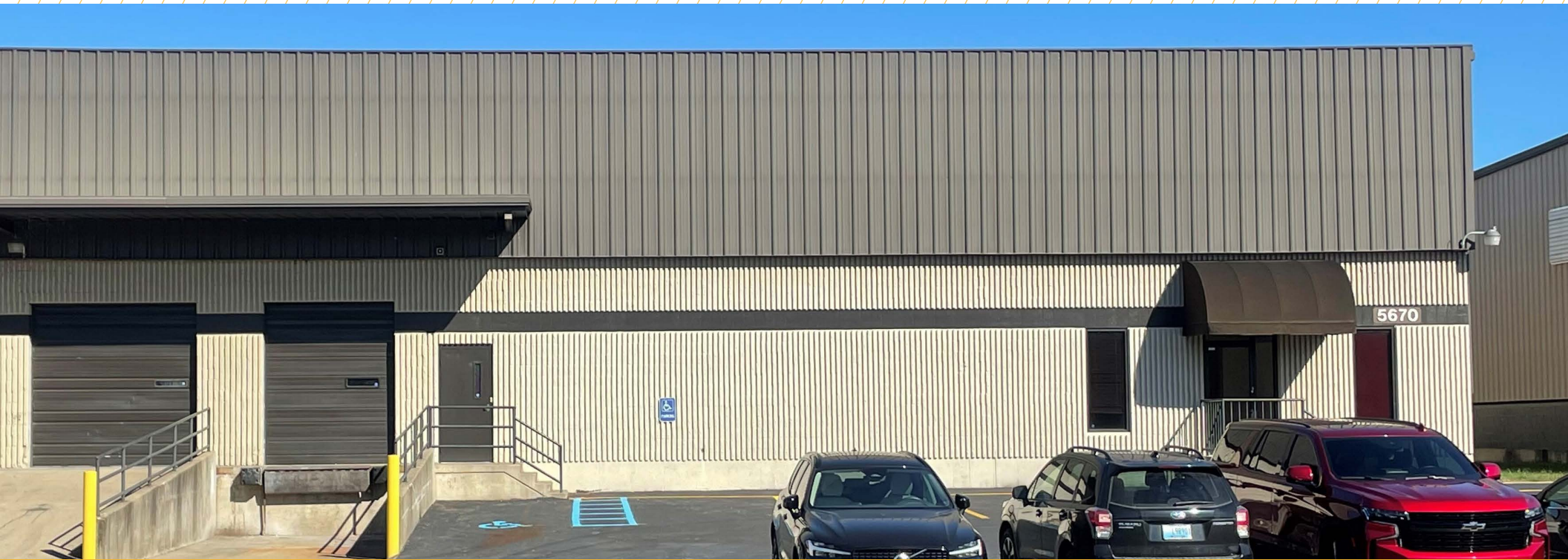


FOR LEASE
9,000 SF AVAILABLE



5670 SHEPHERDSVILLE RD
LOUISVILLE, KY 40228

PARK JEFFERSON

5670 SHEPHERDSVILLE RD | LOUISVILLE, KY 40228

PROPERTY **HIGHLIGHTS**

2,400 sf of office/showroom

LED lighting

One (1) dock

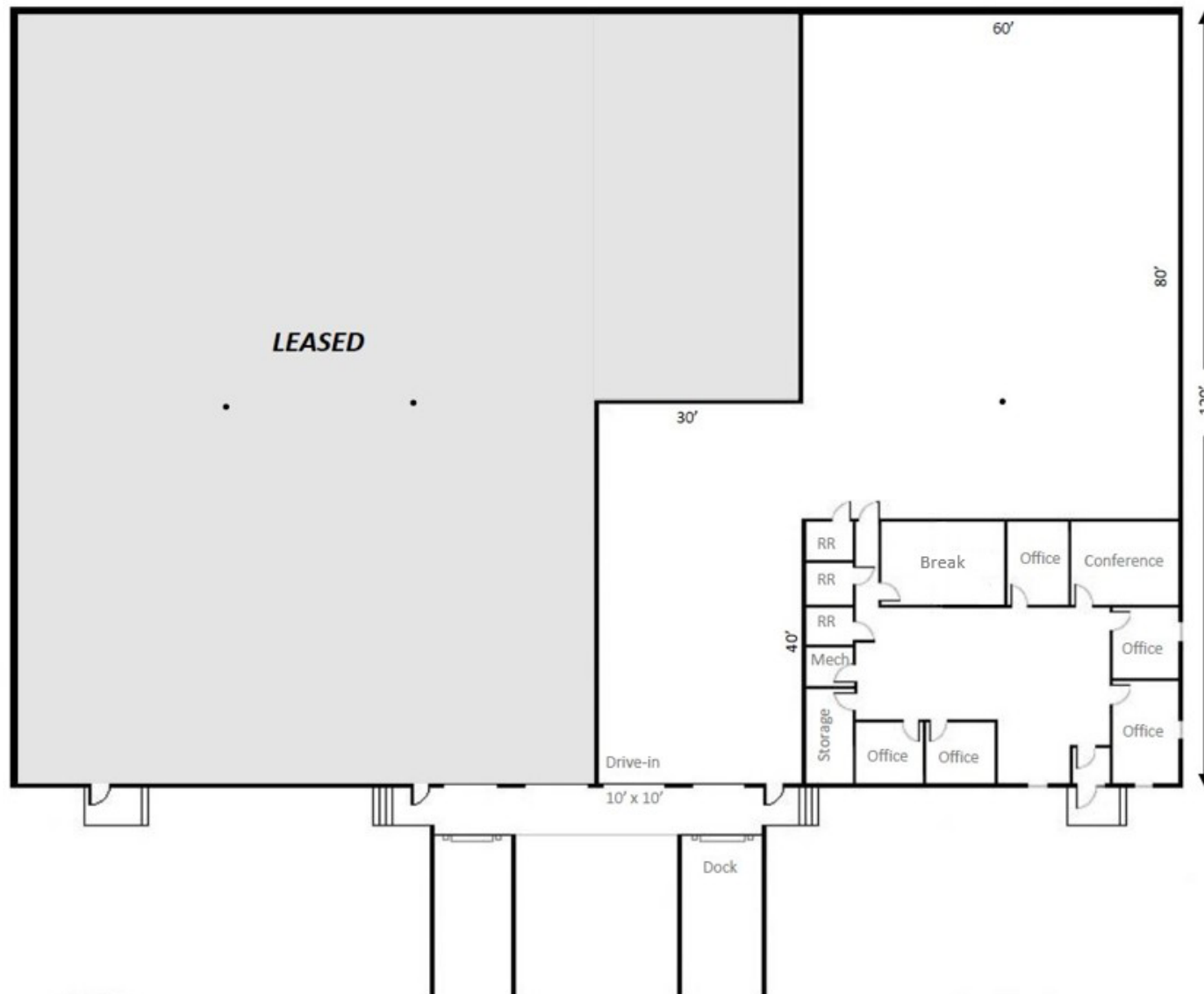
One (1) drive-in door (10' x 10')

277/480 volt; 200 amp; 3-phase

19' - 22' clear height

M-2 zoning





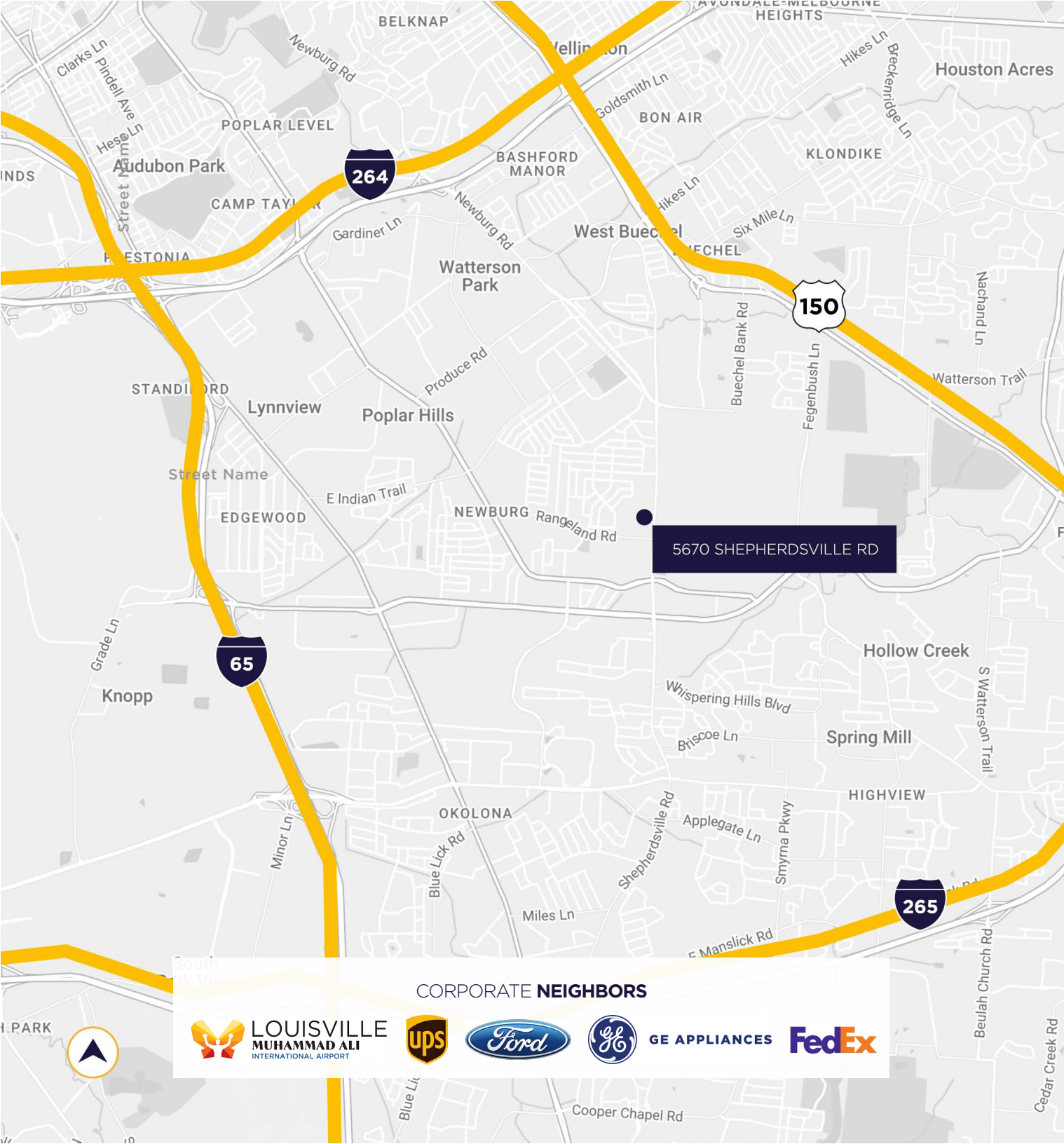
FLOOR PLAN
9,000 SF AVAILABLE

EXCEPTIONAL LOCATION



59,972
OF EMPLOYEES
Within 3 Miles





0.2 MILES

TO GE APPLIANCE PARK

2.8 MILES

TO FEDEX FREIGHT

4.2 MILES

TO I-65

4.6 MILES

TO I-264

4.9 MILES

TO FORD ASSEMBLY PLANT

6.5 MILES

TO UPS WORLDPORT/
AIRPORT

CORPORATE **NEIGHBORS**



GE APPLIANCES



CONTACT INFORMATION

GREG CHARMOLI

gcharmoli@commercialkentucky.com
+1 502 589 5150 ext. 238



©2024 Cushman & Wakefield. All rights reserved. The information contained in this communication is strictly confidential. This information has been obtained from sources believed to be reliable but has not been verified. NO WARRANTY OR REPRESENTATION, EXPRESS OR IMPLIED, IS MADE AS TO THE CONDITION OF THE PROPERTY (OR PROPERTIES) REFERENCED HEREIN OR AS TO THE ACCURACY OR COMPLETENESS OF THE INFORMATION CONTAINED HEREIN, AND SAME IS SUBMITTED SUBJECT TO ERRORS, OMISSIONS, CHANGE OF PRICE, RENTAL OR OTHER CONDITIONS, WITHDRAWAL WITHOUT NOTICE, AND TO ANY SPECIAL LISTING CONDITIONS IMPOSED BY THE PROPERTY OWNER(S). ANY PROJECTIONS, OPINIONS OR ESTIMATES ARE SUBJECT TO UNCERTAINTY AND DO NOT SIGNIFY CURRENT OR FUTURE PROPERTY PERFORMANCE.

Independently Owned & Operated / A Member of the Cushman & Wakefield Alliance