

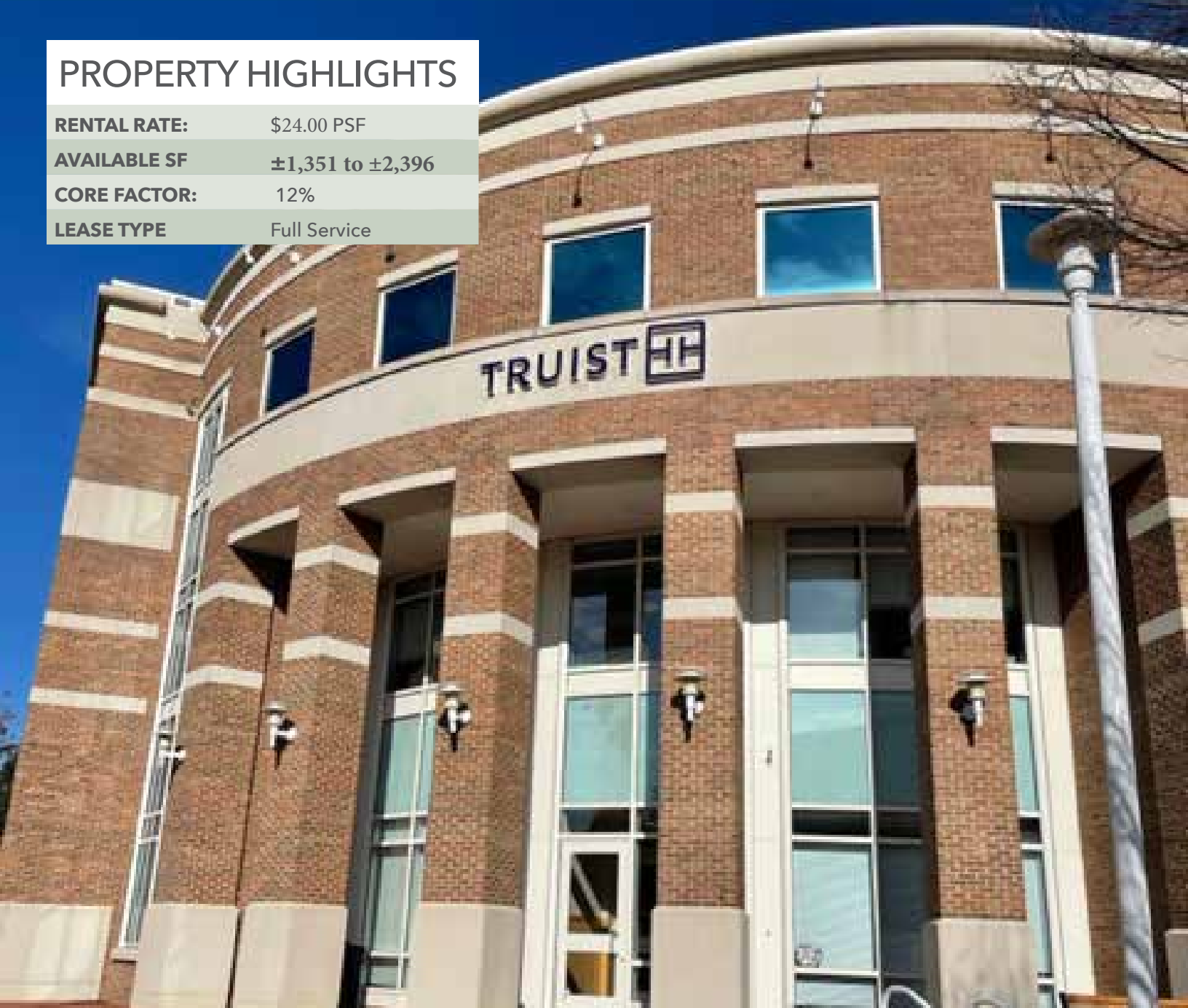
FOR LEASE

OFFICE SPACE TRUIST OFFICE BUILDING

4801 COURTHOUSE STREET • WILLIAMSBURG, VA

PROPERTY HIGHLIGHTS

RENTAL RATE:	\$24.00 PSF
AVAILABLE SF	±1,351 to ±2,396
CORE FACTOR:	12%
LEASE TYPE	Full Service



TENANTS INCLUDE

KAUFMAN & CANOLES



TRUIST

Candid.

WILLIAMSBURG
Health
FOUNDATION



Commercial Real Estate Brokerage
423 N. Boundary Street, Suite 200
Williamsburg, VA 23185
www.rjsassocs.com

Joseph P. Singley
P / 757.229.3139
E / joe@rjsassocs.com

FOR LEASE

OFFICE SPACE TRUIST OFFICE BUILDING

4801 COURTHOUSE STREET • WILLIAMSBURG, VA



PROPERTY FEATURES

- Class A Office Space in New Town
- Building is anchored by Truist. Other tenants include Kaufman & Canoles, Candid and Williamsburg Health Foundation
- Centrally located on the corner of Monticello Avenue and Courthouse Street, directly across from the Williamsburg/James City County Courthouse
- Top quality exterior and interior finishes
- Ample Parking



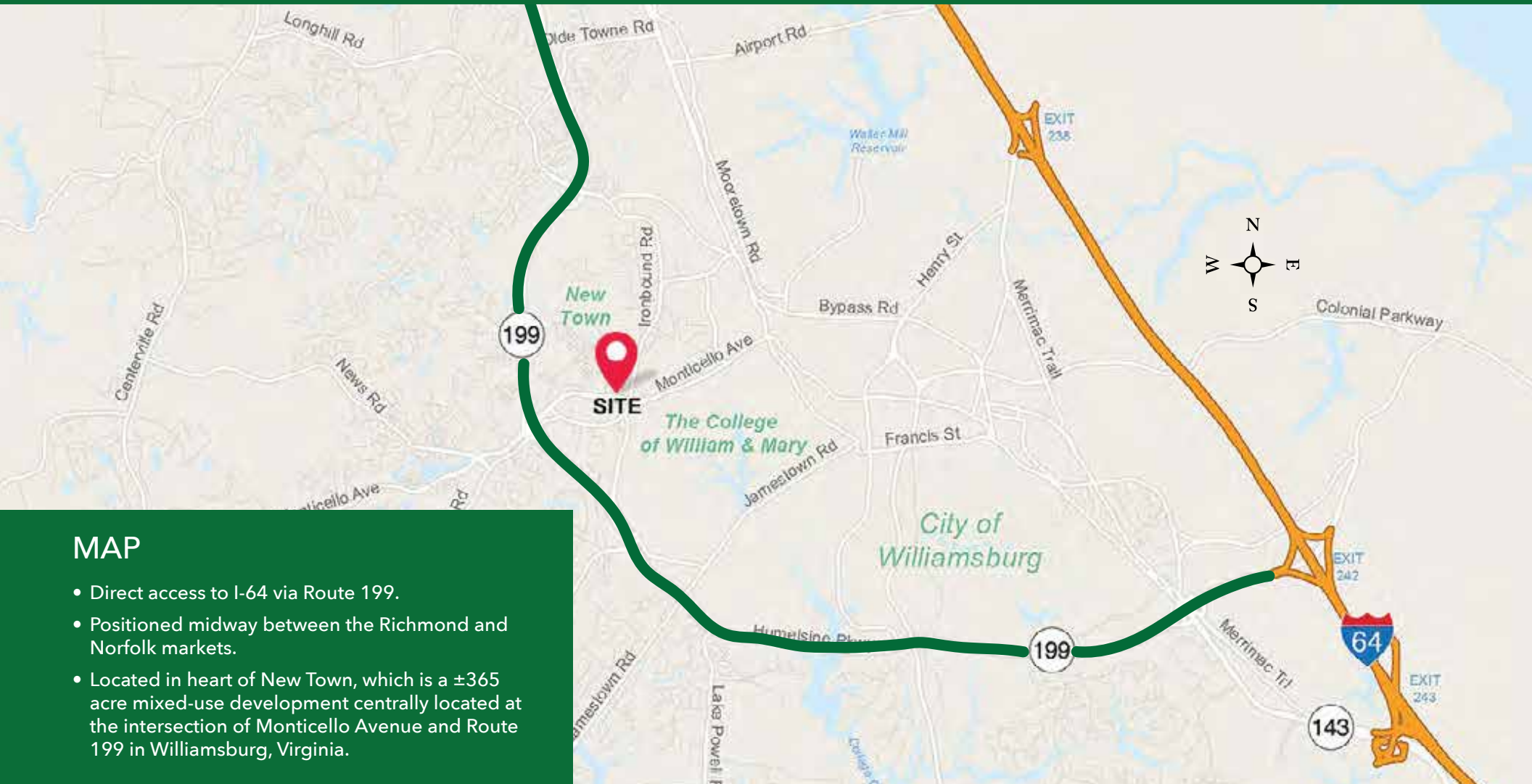
Commercial Real Estate Brokerage
423 N. Boundary Street, Suite 200
Williamsburg, VA 23185
www.rjsassocs.com

Joseph P. Singley
P / 757.229.3139
E / joe@rjsassocs.com

FOR LEASE

OFFICE SPACE TRUIST OFFICE BUILDING

4801 COURTHOUSE STREET • WILLIAMSBURG, VA



MAP

- Direct access to I-64 via Route 199.
- Positioned midway between the Richmond and Norfolk markets.
- Located in heart of New Town, which is a ±365 acre mixed-use development centrally located at the intersection of Monticello Avenue and Route 199 in Williamsburg, Virginia.



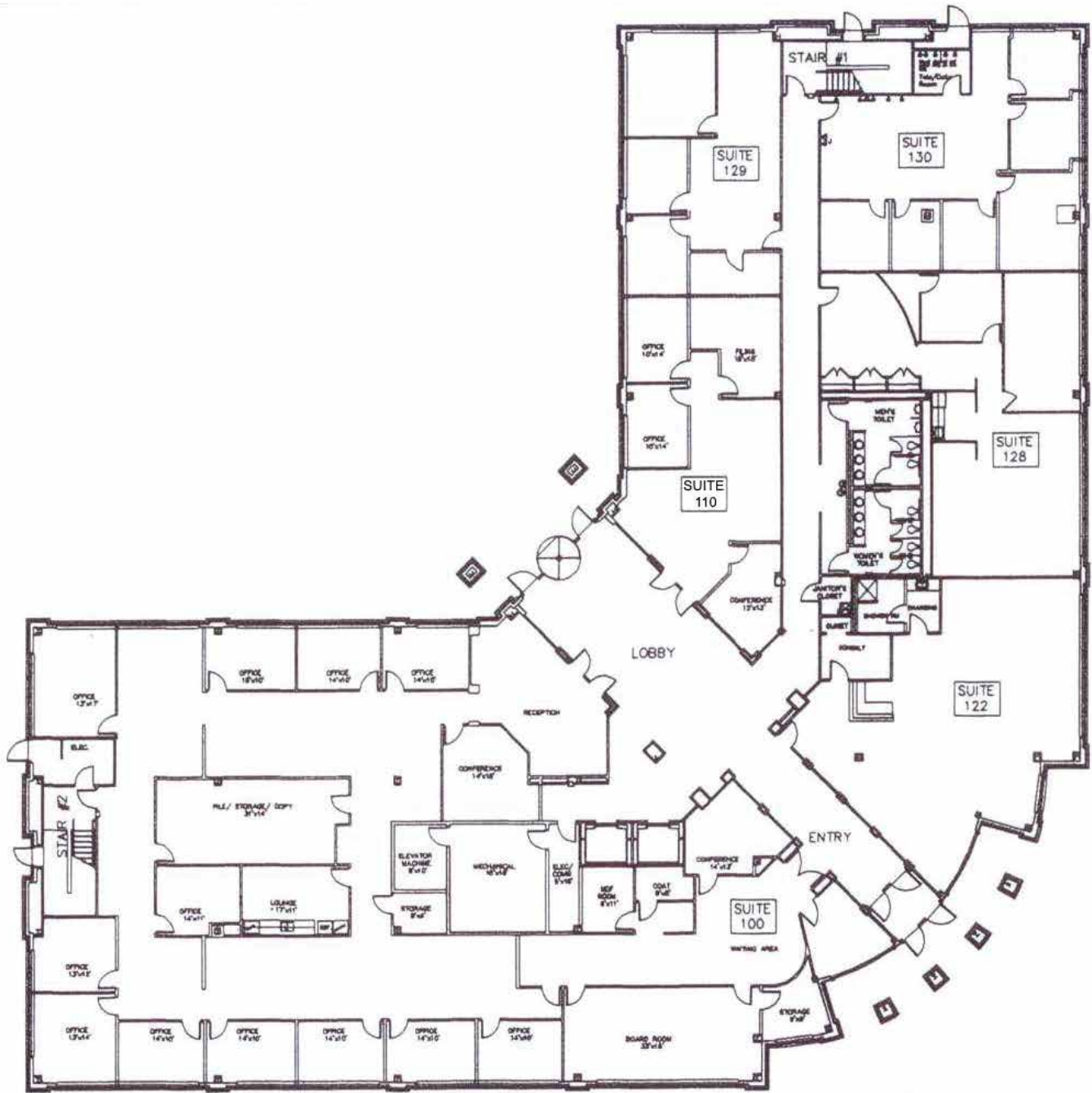
Commercial Real Estate Brokerage
423 N. Boundary Street, Suite 200
Williamsburg, VA 23185
www.rjsassocs.com

Joseph P. Singley
P / 757.229.3139
E / joe@rjsassocs.com

FOR LEASE

OFFICE SPACE TRUIST OFFICE BUILDING

4801 COURTHOUSE STREET • WILLIAMSBURG, VA



FIRST FLOOR PLAN FULLY LEASED



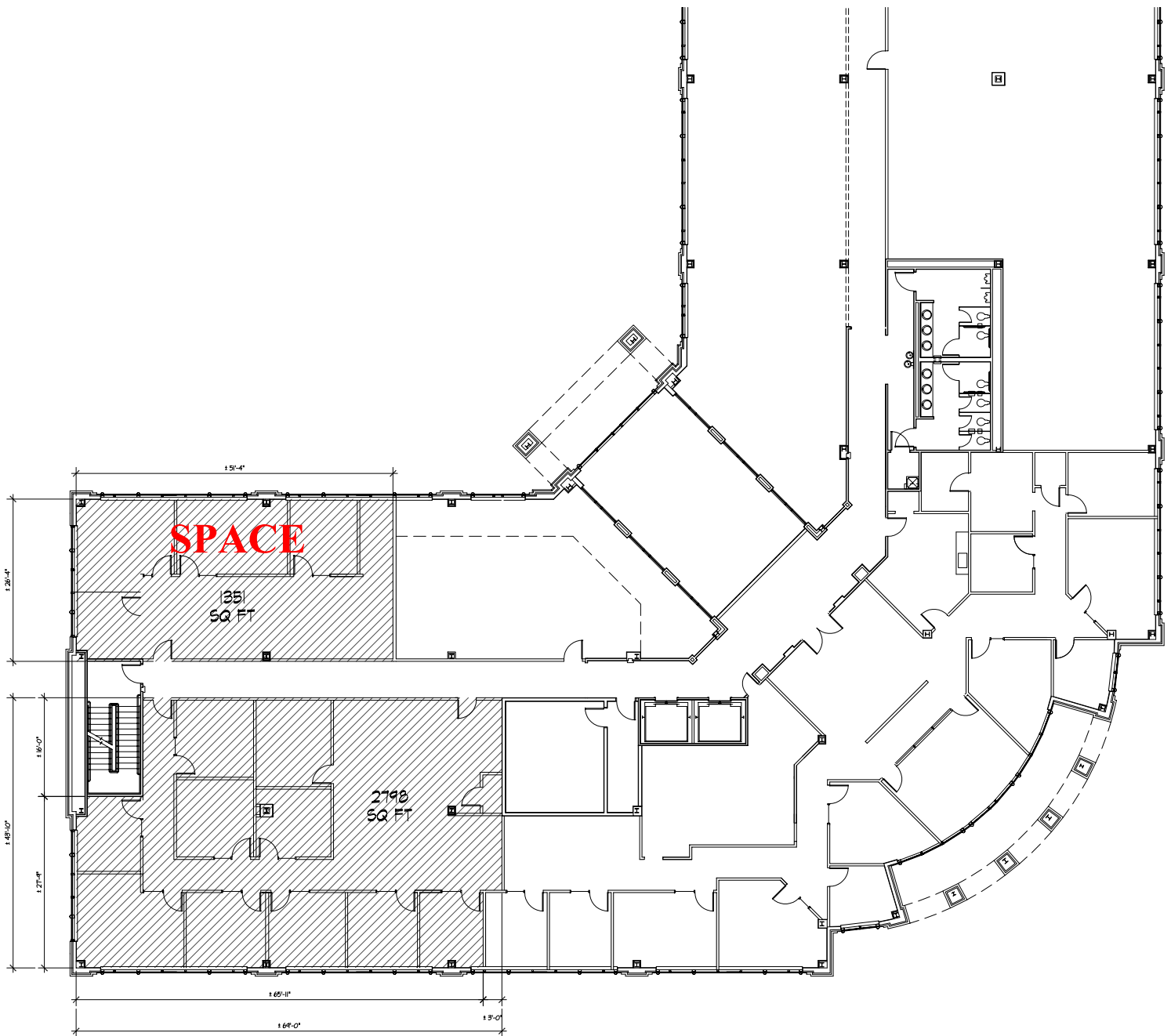
Commercial Real Estate Brokerage
423 N. Boundary Street, Suite 200
Williamsburg, VA 23185
www.rjsassocs.com

Joseph P. Singley
P / 757.229.3139
E / joe@rjsassocs.com

FOR LEASE

OFFICE SPACE TRUIST OFFICE BUILDING

4801 COURTHOUSE STREET • WILLIAMSBURG, VA



SECOND FLOOR PLAN

Office Suite 202: ±1,351 USF



Commercial Real Estate Brokerage
423 N. Boundary Street, Suite 200
Williamsburg, VA 23185
www.rjsassocs.com

Joseph P. Singley
P / 757.229.3139
E / joe@rjsassocs.com

FOR LEASE

OFFICE SPACE TRUIST OFFICE BUILDING

4801 COURTHOUSE STREET • WILLIAMSBURG, VA



THIRD FLOOR PLAN

Office Suite 302: ±2,396 USF



Commercial Real Estate Brokerage
423 N. Boundary Street, Suite 200
Williamsburg, VA 23185
www.rjsassocs.com

Joseph P. Singley
P / 757.229.3139
E / joe@rjsassocs.com