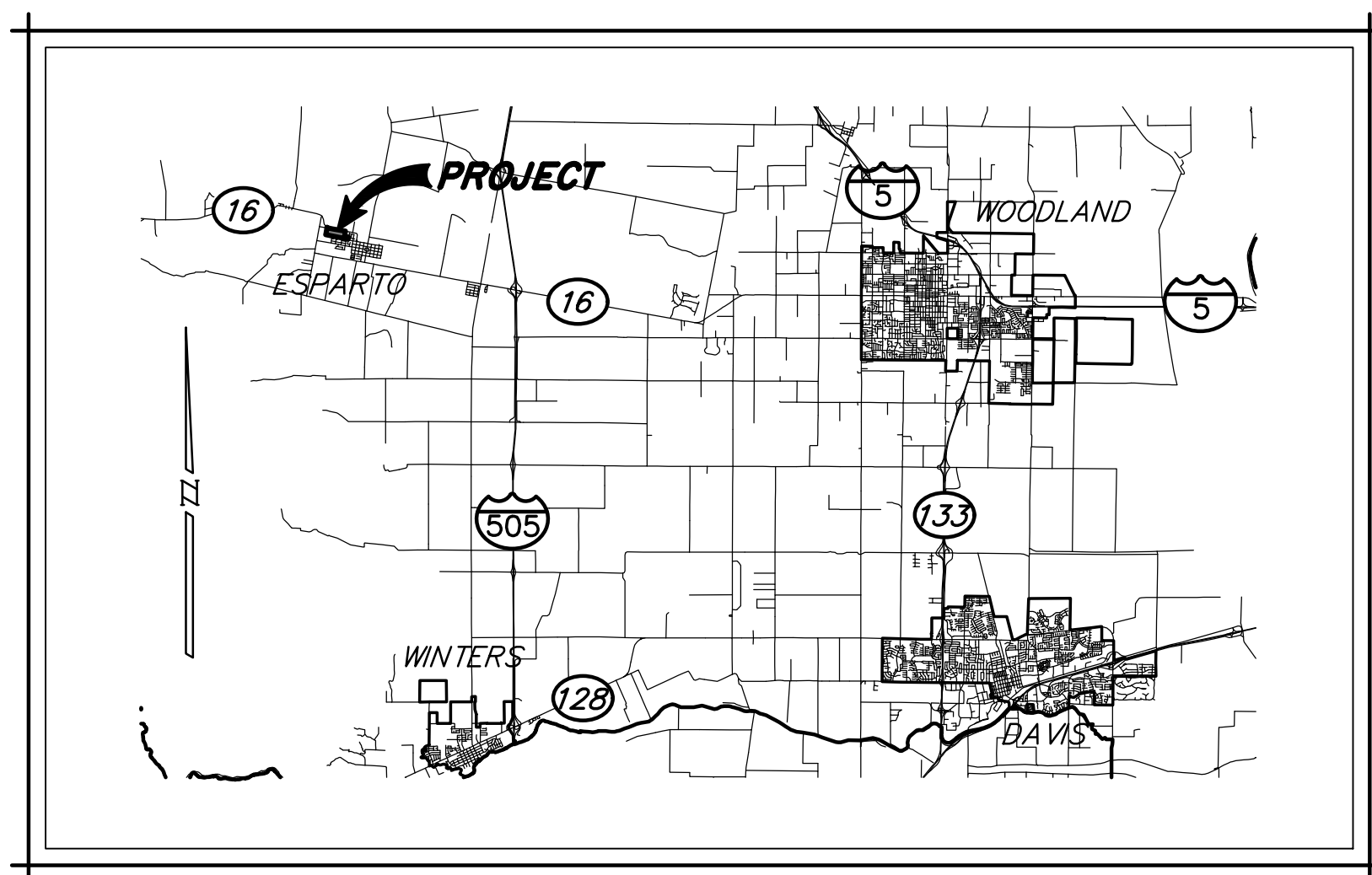
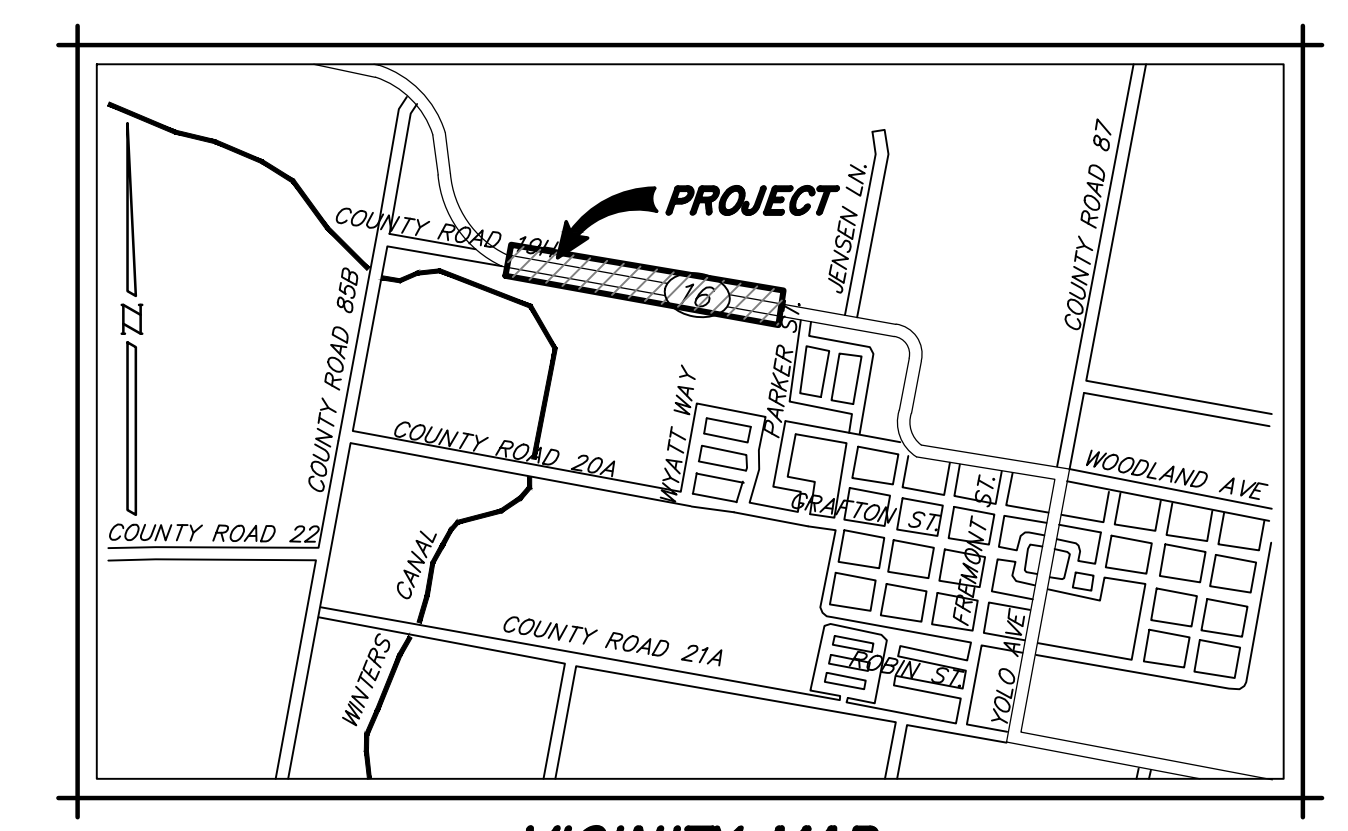


DIST	COUNTY	ROUTE	POST MILE	SHEET NO.	TOTAL SHEETS
3	YOL	16	27.00/34.25	1	8

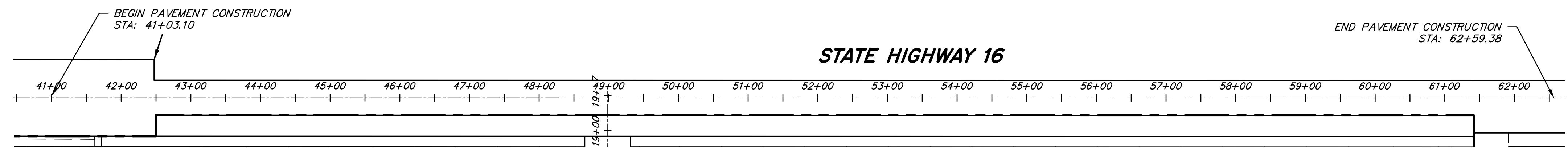
STATE OF CALIFORNIA
DEPARTMENT OF TRANSPORTATION
PROJECT PLANS FOR CONSTRUCTION ON
STATE HIGHWAY 16
YOLO COUNTY, CALIFORNIA



LOCATION MAP
NTS



VICINITY MAP
N.T.S.



SEE ON-SITE IMPROVEMENT PLANS BY MVE, INC

BENCHMARK

DESCRIPTION: 2" ALUMINUM DISK STAMPED "BRIDGE 1999" LOCATED NORTHEASTERLY FROM THE BRIDGE OVER CACHE CREEK ALONG COUNTY ROAD 85.
ELEVATION: 210.6 NAVD 88

OWNER

CASTLE HORIZONS, LLC
12885 ALCOSTA BOULEVARD, SUITE A
SAN RAMON, CA 94583
PH: (925) 328-1000
CONTACT: DAN BOATWRIGHT

CIVIL ENGINEER

MVE, INC.
1117 "L" ST.
MODESTO, CA 95354
PH: (866) 526-4214
CONTACT: ROBERTO GUZMAN, E.I.T.
DEREK A. MARTIS, P.E. QSD/QSP

GEOTECHNICAL ENGINEER

WALLACE-KUHL & ASSOCIATES, INC.
3251 BEACON BLVD., SUITE 300
WEST SACRAMENTO, CA 95691
PH: (916) 372-1434

SHT. NO.	DWG. NO.	REV.	TITLE
1	CO1		COVER SHEET
2	GN1		GENERAL NOTES
3	XS1		SECTIONS AND DETAILS
4	TO1		EX TOPOGRAPHY & DEMOLITION PLAN
5	TO2		EX TOPOGRAPHY & DEMOLITION PLAN
6	PP1		PLAN AND PROFILE - HWY. STATE ROUTE 16
7	PP2		PLAN AND PROFILE - HWY. STATE ROUTE 16
8	PD1		PAVEMENT DELINEATION, SIGN AND STREET LIGHT PLAN

UTILITY COMPANIES

SANITARY SEWER: ESPARTO COMMUNITY SERVICES DISTRICT
PH: (530) 787-4502
CONTACT: MANUEL QUINTANA

WATER: ESPARTO COMMUNITY SERVICES DISTRICT
PH: (530) 787-4502
CONTACT: MANUEL QUINTANA

GAS/ELECTRIC: PACIFIC GAS AND ELECTRIC
PH: TBD
CONTACT: TBD

CABLE TELEVISION: ESPARTO BROADBAND
PH: (530) 787-4656

LEGEND

EXISTING		EXISTING		PROPOSED	
100.0	GROUND ELEVATION	PIV	POST INDICATOR VALVE	SD	STORM DRAIN LINE
P 100.00	PAVEMENT ELEVATION	REDUCER	REDUCER	SD	STORM DRAIN OUTFALL STRUCTURE
EP 100.00	EDGE OF PAVEMENT ELEVATION	VALVE	VALVE	---	DITCH FLOW LINE
C 100.00	CONCRETE ELEVATION	WELL	WELL	TOE	TOE OF SLOPE
BSW 100.00	BACK OF SIDEWALK ELEVATION	DOUBLE CHECK VALVE	DOUBLE CHECK VALVE	TOP	TOP OF SLOPE
BC 100.00	BACK OF CURB ELEVATION	CABLE TV LINE	CABLE TV LINE	---	DRAINAGE ARROW
TC 100.00	TOP OF CURB ELEVATION	ELECTRICAL LINE	ELECTRICAL LINE	HGL	HGL LABEL
FL 100.00	FLOWLINE ELEVATION	GAS LINE	GAS LINE	---	SINGLE POST SIGN
LIP 100.00	GUTTER LIP ELEVATION	TELEPHONE LINE	TELEPHONE LINE	---	DOUBLE POST SIGN
R 100.00	RIM ELEVATION	OVERHEAD UTILITY LINES	OVERHEAD UTILITY LINES	---	STREET NAME SIGN
IR	IRRIGATION LINE	UTILITY BOX (LABEL TYPE)	UTILITY BOX (LABEL TYPE)	---	MONUMENT WELL
SP	STAND PIPE	UTILITY MANHOLE (LABEL TYPE)	UTILITY MANHOLE (LABEL TYPE)	R/W	RIGHT OF WAY SYMBOL
C	GATE VALVE	JOINT POLE	JOINT POLE	---	CENTERLINE SYMBOL
SS	SEWER LINE	TELEPHONE POLE	TELEPHONE POLE	---	PROPERTY LINE SYMBOL
SSFM	SS FORCE MAIN	UTILITY POLE WITH GUY WIRE	UTILITY POLE WITH GUY WIRE	---	GRADING TRANSITION
CO	CLEAN OUT	TOE OF SLOPE	TOE OF SLOPE	---	CURB, GUTTER, & SIDEWALK
SSMH	MANHOLE	TOP OF SLOPE	TOP OF SLOPE	---	REVISION DELTA SYMBOL
SD	STORM DRAIN LINE	EDGE OF PAVEMENT	EDGE OF PAVEMENT	---	
SDFM	SD FORCE MAIN	CURB AND GUTTER	CURB AND GUTTER	---	
CB	CATCH BASIN	GUARD POST	GUARD POST	---	
DMH	DRY WELL	SIGN	SIGN	---	
SDMH	MANHOLE	TRAFFIC SIGNAL	TRAFFIC SIGNAL	---	
W	WATER LINE	MAILBOX	MAILBOX	---	
FW	FIRE SERVICE LINE	TREE (SPREAD DRAWN TO SCALE)	TREE (SPREAD DRAWN TO SCALE)	---	
NPW	NON POTABLE WATER			---	
BFP	BACK FLOW PREVENTER			---	
BO	BLOW OFF			---	
FH	FIRE HYDRANT			---	
FDC	FIRE DEPARTMENT CONNECTION (FDC)			---	
H	HOSE BIB			---	

ABBREVIATIONS

AB	AGGREGATE BASE	LPVC	LOW POINT VERTICAL CURVE	TOP	TOP OF SLOPE
AC	ASPHALTIC CONCRETE	LS	LANDSCAPE	TYP	TYPICAL
ADJ	ADJACENT	MAX	MAXIMUM	UBC	UNIFORM BUILDING CODE
AMR	AUTOMATIC METER READING	MERCSA	MADISON ESPARTO REGIONAL COUNTY SERVICE AREA	UPC	UNIFORM PLUMBING CODE
AP	ANGLE POINT	MIN	MINIMUM	USA	UNDERGROUND SERVICE ALERT
ARV	AIR RELEASE VALVE	MJR	MECHANICAL JOINT RESTRAINT WITH THRUST BLOCK	V	VERTICAL
BC	BEGIN CURVE / BACK OF CURB	MRDD	MECHANICAL JOINT RESTRAINT WITH THRUST BLOCK	WCR	WHEELCHAIR RAMP
BOV	BLOWOFF VALVE	MPVC	MID POINT OF VERTICAL CURVE	WQID	WASTE DISCHARGE IDENTIFICATION NUMBER
BPT	BEGIN POINT OF TRANSITION	MPVC	MID POINT OF VERTICAL CURVE	WE	WATER EASEMENT
BSW	BACK OF SIDEWALK	MRDD	MECHANICAL JOINT RESTRAINT WITH THRUST BLOCK	WS	WATER SERVICE
BTC	BACK TOP OF CURB	NOI	NOTICE OF INTENT	YC	YOLO COUNTY
BV	BUTTERFLY VALVE	NOT	NOTICE OF TERMINATION	YCFWCDC	YOLO COUNTY FLOOD CONTROL & WATER CONSERVATION DISTRICT
BVC	BEGIN VERTICAL CURVE	NTS	NOT TO SCALE	(N)	NORTH
BW	BOTTOM OF WALL	OC	ON CENTER	(S)	SOUTH
BWL	BROKEN WHITE LINE	P	PAVEMENT	(E)	EAST
BYL	BROKEN YELLOW LINE	PCC	PORTLAND CEMENT CONCRETE	(W)	WEST
C	CONCRETE	PERF	PERFORATED		
CB	CATCH BASIN	PL	PROPERTY LINE		
CBC	CALIFORNIA BUILDING CODE	PLR	POINT OF REVERSE CURVE		
CL	CENTERLINE	PRS	PRESSURE REDUCING STATION		
CLR	CLEAR	PVI	POINT OF VERTICAL INTERSECTION		
C.O.A.	CONDITIONS OF APPROVAL	PVS	POINT OF VERTICAL INTERSECTION STATION		
C.O.E.	CITY OF ESPARTO	PVE	POINT OF VERTICAL INTERSECTION ELEVATION		
DEC	DECORATIVE	PT	POINT		
DK	DIKE	P.U.E.	PUBLIC UTILITY EASEMENT		
DK	DIKE	R	RADIUS		
DWG	DRAWING	R/W	RIGHT-OF-WAY		
EC	END OF CURVE	RD	RELATIVE DENSITY		
ECSD	ESPARTO COMMUNITY SERVICE DISTRICT	RP	RETURN POINT		
ELEV	ELEVATION	SDE	STORM DRAIN EASEMENT		
EP	EDGE OF PAVEMENT	SDMH	STORM DRAIN MANHOLE		
EPT	END POINT OF TRANSITION	SF	SQUARE FEET		
EVA	EMERGENCY VEHICULAR ACCESS	SG	SUB GRADE		
EVC	END VERTICAL CURVE	SL	SEWER SERVICE LATERAL		
EX, EXIST	EXISTING	SNS	STREET NAME SIGN		
FC	FACE OF CURB	SSE	SANITARY SEWER EASEMENT		
FG	FINISH GRADE	SSMH	SANITARY SEWER MANHOLE STATION		
FH	FIRE HYDRANT	STD	STANDARD		
FL	FLOW LINE	STL	STREET LIGHT		
FM	FORCE MAIN	SW	SIDEWALK		
FSW	FACE OF SIDEWALK	SWL	SOLID WHITE LINE		
GB	GRADE BREAK	TBC	TOP BACK OF CURB		
GV	GATE VALVE	TC	TOP OF CURB		
H	HORIZONTAL	TD	TOP OF AG DIKE		
HP	HIGH POINT	TFC	TOP FACE OF CURB		
HWL	HIGH WATER LINE	TI	TRAFFIC INDEX		
INV	INVERT	TOE	TOE OF SLOPE		
L	LENGTH				
LF	LINEAR FEET				
LH	LAMPHOLE				
LIP	GUTTER LIP				
LL	LOT LINE				
LP	LOW POINT				

811
Know what's below.
Call before you dig.

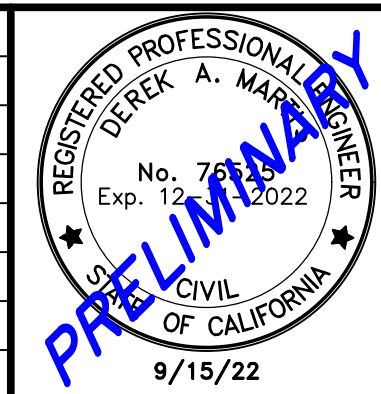
PRIOR TO CONSTRUCTION THE CONTRACTOR SHALL CALL UNDERGROUND SERVICE ALERT FOR UNDERGROUND CLEARANCE. USA WILL PROVIDE INFORMATION ABOUT OR LOCATE AND MARK UNDERGROUND FACILITIES.

UNAUTHORIZED CHANGES & USES

THE ENGINEER PREPARING THESE PLANS WILL NOT BE RESPONSIBLE FOR, OR LIABLE FOR, UNAUTHORIZED CHANGES TO OR USES OF THESE PLANS. ALL CHANGES TO THE PLANS MUST BE IN WRITING AND MUST BE APPROVED BY THE PREPARER OF THESE PLANS.

Drawn By: RG/JSH
Issue Date: 9/15/22
Job No.: NC07254E
Checked: DAM
Design By: RG/JSH

REVISIONS				
NO.	DATE	ISSUED FOR	BY	



MVE Inc.
1117 L Street, Modesto, CA 95354 | 866.526.4214 | www.mve.net
Northern California | Southern California | Nevada

STATE OF CALIFORNIA DEPARTMENT OF TRANSPORTATION
STATE HIGHWAY 16 IMPROVEMENTS
COVER SHEET
YOLO COUNTY CALIFORNIA

DWG.	CO1
SHEET	1
OF	8

REVIEW PURPOSES ONLY - NOT FOR CONSTRUCTION

MVE CONSTRUCTION NOTES

GENERAL:

- UNLESS SPECIFICALLY NOTED OTHERWISE, ALL IMPROVEMENTS SHALL BE CONSTRUCTED IN STRICT ACCORDANCE WITH COUNTY OF YOLO STANDARDS AND SPECIFICATIONS LATEST EDITION AND ALL AMENDMENTS THERETO TO DATE AND CALIFORNIA DEPARTMENT OF TRANSPORTATION STANDARD SPECIFICATIONS (CALTRANS) LATEST EDITION, WHERE APPLICABLE.
- SOILS REPORT: THE GEOTECHNICAL ENGINEERING INVESTIGATION ENTITLED GEOTECHNICAL ENGINEERING REPORT ORCUOLI PROPERTY IS HEREBY MADE A PART OF THESE PLANS AND SPECIFICATIONS. THE CONTRACTOR SHALL OBTAIN A COPY OF THIS REPORT AND SHALL PERFORM ALL GRADING, EXCAVATING, COMPACTION, AND SUBGRADE PREPARATION AS PER DIRECTION GIVEN IN THESE PLANS AND THE SOILS REPORT.
- APPROVAL OF THE USE OF NON-APPROVED MATERIALS OR CONSTRUCTION TECHNIQUES MUST BE OBTAINED FROM THE CITY ENGINEER IN ADVANCE OF CONSTRUCTION.
- THE CONTRACTOR SHALL BE HELD RESPONSIBLE FOR ANY FIELD CHANGES MADE WITHOUT PRIOR WRITTEN AUTHORIZATION FROM THE OWNER AND/OR ENGINEER.
- PRIOR TO STARTING ANY WORK, THE CONTRACTOR SHALL INVITE THE APPROPRIATE REGULATORY AGENCIES TO A PRE-CONSTRUCTION CONFERENCE.
- THE CONTRACTOR SHALL COMPLY WITH ALL LOCAL, STATE AND FEDERAL SAFETY REGULATIONS PERTAINING TO HIS OPERATIONS. THE CONTRACTOR SHALL PROVIDE ALL LIGHTS, SIGNS, BARRICADES, FLAGMEN OR OTHER DEVICES NECESSARY FOR PUBLIC SAFETY. THE CONTRACTOR'S ATTENTION IS CALLED TO THE REQUIREMENTS OF TITLE 8, CALIFORNIA ADMINISTRATION CODE, SUBCHAPTER 4, ARTICLE 6, "EXCAVATIONS, TRENCHES AND EARTHWORK."
- THE CONTRACTOR SHALL ASSUME SOLE AND COMPLETE RESPONSIBILITY FOR JOBSITE CONDITIONS DURING THE COURSE OF CONSTRUCTION OF THIS PROJECT, INCLUDING SAFETY OF ALL PERSONS AND PROPERTY. THIS REQUIREMENT SHALL APPLY CONTINUOUSLY AND NOT BE LIMITED TO NORMAL WORKING HOURS.
- THE CONTRACTOR SHALL DEFEND, INDEMNIFY AND HOLD THE OWNER AND ENGINEER HARMLESS FROM ANY AND ALL LIABILITY, REAL OR ALLEGED, IN CONNECTION WITH THE CONSTRUCTION WORK ON THIS PROJECT, EXCEPTING FOR LIABILITY ARISING FROM THE SOLE NEGLIGENCE OF THE OWNER OR THE ENGINEER.
- APPROPRIATE DUST CONTROL SHALL BE PROVIDED AT ALL TIMES, AT THE CONTRACTOR'S EXPENSE, AND SHALL BE IN ACCORDANCE WITH SECTION 10 OF CALTRANS STANDARD SPECIFICATIONS AND WITH LOCAL REQUIREMENTS.
- THE CONTRACTOR SHALL BE RESPONSIBLE FOR MAINTAINING A SET OF "AS-BUILT" RED-LINED PLANS THAT SHOWS ANY CHANGES WHICH OCCUR DURING CONSTRUCTION. PRIOR TO FINAL ACCEPTANCE OF IMPROVEMENTS, THE CONTRACTOR SHALL SUBMIT THE AS-BUILT PLANS TO MVE.
- THE ENGINEER ASSUMES NO RESPONSIBILITY FOR ANY WORK PERFORMED BY THE CONTRACTOR AND/OR OWNER BASED ON DRAWINGS WHICH HAVE NOT BEEN SIGNED AND SEALED BY THE ENGINEER.
- THE CONTRACTOR SHALL EXERCISE DUE CAUTION AND SHALL CAREFULLY PRESERVE BENCHMARKS, CONTROL POINTS, REFERENCE POINTS AND ALL SURVEY STAKES AND SHALL BEAR ALL EXPENSES FOR REPLACEMENT AND/OR ERRORS CAUSED BY THEIR UNNECESSARY LOSS OR DISTURBANCE.
- EACH CONTRACTOR OR SUBCONTRACTOR SHALL BE RESPONSIBLE TO CLEAN THE JOB SITE AT THE END OF EACH PHASE OF WORK AND TO REMOVE AND DISPOSE OF ALL TRASH, SCRAP, AND UNUSED MATERIAL AT THEIR OWN EXPENSE IN A TIMELY MANNER.
- WORK IN EASEMENTS AND/OR RIGHTS-OF-WAY IS SUBJECT TO THE APPROVAL AND ACCEPTANCE OF THE REGULATORY AGENCY RESPONSIBLE FOR OPERATION AND/OR MAINTENANCE OF SAID EASEMENT AND/OR RIGHT-OF-WAY. FOR ALL WORK WITHIN PUBLIC RIGHTS-OF-WAY OR EASEMENTS, THE CONTRACTOR SHALL PRESERVE THE INTEGRITY AND LOCATION OF ANY AND ALL PUBLIC UTILITIES AND PROVIDE THE NECESSARY CONSTRUCTION TRAFFIC CONTROL. CONTRACTOR SHALL, THROUGH THE ENCROACHMENT PERMIT PROCESS, VERIFY WITH THE NECESSARY REGULATORY AGENCIES, THE NEED FOR ANY TRAFFIC ROUTING PLANS. IF A PLAN IS REQUIRED, CONTRACTOR SHALL PROVIDE PLAN AND RECEIVE PROPER APPROVALS PRIOR TO CONSTRUCTION.
- THE CONTRACTOR SHALL BE RESPONSIBLE FOR ADEQUATELY SCHEDULING INSPECTION AND TESTING OF ALL FACILITIES CONSTRUCTED UNDER THIS CONTRACT. ALL TESTING SHALL CONFORM TO THE REGULATORY AGENCY'S STANDARD SPECIFICATIONS. ALL TESTING AND INSPECTION SHALL BE PAID FOR BY THE OWNER; ALL RE-TESTING AND/OR RE-INSPECTION SHALL BE PAID FOR BY THE CONTRACTOR. THE CONTRACTOR SHALL GIVE THE REVIEWING AGENCY 48 HOURS NOTICE PRIOR TO REQUIRING INSPECTION FOR ALL UNDERGROUND PIPELINES AND STREET CONSTRUCTION. BACKFILL SHALL NOT BE AUTHORIZED OVER UTILITY LINES UNTIL AFTER INSPECTION AND APPROVAL.
- IF EXISTING IMPROVEMENTS NEED TO BE DISTURBED AND/OR REMOVED FOR THE PROPER PLACEMENT OF IMPROVEMENTS TO BE CONSTRUCTED BY THESE PLANS, THE CONTRACTOR SHALL BE RESPONSIBLE FOR PROTECTING REMAINING IMPROVEMENTS FROM DAMAGE. COSTS SHALL BE INCLUDED IN THE UNIT PRICE BID FOR REMOVAL AND/OR REPLACEMENT OF EXISTING IMPROVEMENTS. IF PLANS DO NOT DICTATE THAT RELOCATION OR REMOVAL MUST OCCUR, THEN A DESIGN CHANGE AND CHANGE ORDER SHALL BE PREPARED.
- THE CONTRACTOR SHALL MAINTAIN A SET OF FULL-SIZE AS-BUILT RECORD DRAWINGS SHOWING THE FINAL LOCATION AND LAYOUT OF ALL MECHANICAL; ELECTRICAL AND INSTRUMENTATION EQUIPMENT; PIPING AND CONDUITS; STRUCTURES; AND OTHER FACILITIES. THE AS-BUILTS OF THE ELECTRICAL SYSTEM SHALL INCLUDE THE STREET LIGHT LAYOUT PLAN SHOWING LOCATION OF LIGHTS, CONDUITS, CONDUCTORS, POINTS OF CONNECTIONS, PULL BOXES, AND WIRE SIZES. AS-BUILT RECORD DRAWINGS SHALL REFLECT CHANGE ORDERS, ACCOMMODATIONS, AND ADJUSTMENTS TO ALL IMPROVEMENTS CONSTRUCTED, WHERE NECESSARY. SUPPLEMENTAL DRAWINGS SHALL BE PREPARED AND SUBMITTED BY THE CONTRACTOR.
- PRIOR TO ACCEPTANCE OF THE PROJECT AND FINAL PROGRESS PAYMENT APPROVAL, THE CONTRACTOR SHALL DELIVER TO THE ENGINEER (MVE, INC.) ONE SET OF CURRENT AS-BUILT RECORD DRAWINGS SHOWING THE INFORMATION REQUIRED ABOVE.
- HISTORIC PRESERVATION: THE CONTRACTOR SHALL IMMEDIATELY STOP WORK AND NOTIFY THE PLANNING DEPARTMENT IN THE EVENT THAT HISTORIC OR PREHISTORIC ARCHAEOLOGICAL FEATURES ARE DISCOVERED DURING EXCAVATION. THE PLANNING DEPARTMENT SHALL NOTIFY THE STATE HISTORIC PRESERVATION OFFICE. REMEDIAL ACTION SHALL BE PREPARED AND IMPLEMENTED BY THE DEVELOPER IN ACCORDANCE WITH IMPLEMENTATION MEASURES OF THE GENERAL PLAN.
- THE CONTRACTOR SHALL BE RESPONSIBLE TO PREPARE AND IMPLEMENT A TRAFFIC CONTROL PLAN AND SUBMIT TO THE CITY OF ESPARTO FOR APPROVAL A MINIMUM OF 3 DAYS PRIOR TO CONSTRUCTION. THE CONTRACTOR SHALL MAINTAIN TRAFFIC & ACCESS TO DRIVEWAYS AT ALL TIMES.
- THE CONTRACTOR SHALL ADHERE TO ALL REQUIREMENTS OF THE LATEST EDITION OF THE STATE OF CALIFORNIA, MANUAL OF TRAFFIC CONTROLS FOR CONSTRUCTION AND MAINTENANCE ZONES. ANY PROPOSED DEVIATION OR MODIFICATIONS TO THESE TRAFFIC CONTROL REQUIREMENTS SHALL BE SUBMITTED TO THE CITY, COUNTY, OR STATE, WHICHEVER IS APPROPRIATE, FOR APPROVAL.

GRADING & EARTHWORK:

- EARTHWORK SHALL BE PERFORMED IN ACCORDANCE WITH CALTRANS STANDARDS AND THE PROJECT'S GEOTECHNICAL REPORT.
- APPROPRIATE DUST CONTROL SHALL BE PROVIDED TO MINIMIZE ANY DUST NUISANCE AND SHALL BE IN ACCORDANCE WITH SECTION 10 OF CALTRANS STANDARD SPECIFICATIONS AND THE REQUIREMENTS OF THE COUNTY.
- GRADES SHOWN HEREON ARE INTENDED TO PROVIDE A BALANCED EARTH WORK OPERATION, ANY CHANGES IN PROPOSED GRADES REQUIRED IN ORDER TO ACHIEVE A BALANCE, MUST BE COORDINATED WITH THE ENGINEER, THERE WILL BE NO EXTRA COSTS DUE TO THE CONTRACTOR BECAUSE OF THESE CHANGES.

THE CONTRACTOR SHALL BE RESPONSIBLE TO GRADE, MAINTAIN, AND PROVIDE PROPER DRAINAGE WITHOUT CAUSING SOIL EROSION OR DRAINING ONTO ADJACENT PROPERTIES.
- EARTHWORK CALCULATIONS ARE BASED ON THE CLEARED GROUND ELEVATIONS BEING COMPARED TO THE DESIGN SURFACE SUBGRADE PER THE GEOTECHNICAL REPORT DATED DECEMBER 28, 2007 PREPARED BY WALLACE-KUHL. MATERIAL RESULTING FROM CLEARING AND STRIPPING SHOULD NOT BE USED FOR GENERAL FILL, BUT MAY BE USED IN LANDSCAPE AREAS. THE QUANTITIES SHOWN BELOW DO NOT TAKE INTO ACCOUNT ANY EXISTING STRUCTURAL PAVEMENT THICKNESSES. THEREFORE, THESE QUANTITIES ARE ONLY ESTIMATES TO HELP AID THE CONTRACTOR.

- THE INTENT OF THIS PLAN IS TO AID THE CONTRACTOR IN DETERMINING THE QUANTITIES OF DIRT TO BE MOVED. THE CUT AND FILL QUANTITIES SHOWN HEREON INDICATE A THEORETICAL YARDAGE FIGURE AND ARE GIVEN ONLY AS A CONVENIENCE TO THE CONTRACTOR.

TOTAL CUT EXPORT TO IN-TRACTS 1,306 CU. YDS.
- THE CONTRACTOR SHALL VERIFY EARTHWORK QUANTITIES PRIOR TO SUBMITTING BIDS. ANY DISCREPANCY SHALL BE BROUGHT TO THE ATTENTION OF THE ENGINEER PRIOR TO SUBMITTING BIDS. NO EXTRA PAYMENT WILL BE PROVIDED FOR GRADING REQUIRED TO ACHIEVE BALANCE. STOCKPILING OF EXCESS FOR FUTURE PHASES SHALL BE COORDINATED WITH THE DEVELOPER AND THE ENGINEER.
- THE GENERAL CONTRACTOR SHALL COORDINATE WORK BY GRADING CONTRACTOR AND LANDSCAPE CONTRACTOR WITH RESPECT TO FINISH GRADING IN PLANTING AREAS. GRADING CONTRACTOR SHALL STOCKPILE APPROPRIATE YARDAGE FROM SITE PREPARATION FOR THIS USE. EXACT AMOUNT SHALL BE DETERMINED BY LANDSCAPE CONTRACTOR. THE DIRT STOCKPILED SHALL BE FREE FROM GRASS, WEEDS AND OTHER DEBRIS. THE LANDSCAPE CONTRACTOR SHALL BE RESPONSIBLE FOR THE FINAL PLACEMENT AND GRADING IN MOUNDED AREAS. IF THE SITE IS STRIPPED, THE STRIPPED MATERIAL SHALL BE STOCKPILED FOR USE IN THE LANDSCAPED AREAS.
- PRIOR TO GENERAL SITE GRADING, SURFACE VEGETATION, ORGANIC TOPSOIL, AND ANY DEBRIS SHOULD BE REMOVED AND DISPOSED OF. DEEP STRIPPING WILL BE REQUIRED WHERE CONCENTRATIONS OF ORGANIC SOILS OR TREE ROOTS ARE ENCOUNTERED DURING SITE GRADING. THE DEPTH OF STRIPPING AND/OR DISCING SHOULD BE DETERMINED IN THE FIELD BY A REPRESENTATIVE OF TECHNICON ENGINEERING SERVICES PRIOR TO EARTHWORK. THIS MATERIAL, HOWEVER, SHOULD NOT BE INCORPORATED INTO ANY ENGINEERED FILL.

CONSTRUCTION MATERIALS:

- UNLESS SPECIFICALLY NOTED HEREIN, ALL CONSTRUCTION MATERIALS, INSTALLATION REQUIREMENTS, TESTING, AND INSPECTION REQUIREMENTS SHALL CONFORM TO YOLO COUNTY AND CAL-TRANS SPECIFICATIONS AND DRAWINGS.
- ASPHALT PAVING: ALL SUB-GRADE PREPARATION, BASE COURSE AND PAVING SHALL CONFORM TO YOLO COUNTY'S STANDARD SPECIFICATIONS, AND THE REQUIREMENTS OF THE PROJECT'S SOILS REPORT. STRUCTURAL THICKNESSES ARE AS INDICATED IN THE PLANS. TESTS SHALL BE PERFORMED BY CONTRACTOR AS PER THE REQUIREMENTS OF THE COUNTY:
 - AGGREGATE BASE (A.B.) SHALL BE INSTALLED AND CONFORM WITH YOLO COUNTY'S STANDARD SPECIFICATIONS PER SECTION 2, TABLE 1 "CONSTRUCTION QUALITY ASSURANCE TESTING"
 - ASPHALT CONCRETE (A.C.) SHALL BE INSTALLED AND CONFORM WITH YOLO COUNTY'S STANDARD SPECIFICATIONS PER SECTION 2, TABLE 1 "CONSTRUCTION QUALITY ASSURANCE TESTING"
 - SUBGRADE PREPARATION SHALL CONFORM TO YOLO COUNTY'S STANDARD SPECIFICATIONS PER SECTION 2, TABLE 1 "CONSTRUCTION QUALITY ASSURANCE TESTING", AND THE REQUIREMENTS OF THE PROJECT'S GEOTECHNICAL REPORT UNLESS SPECIFICALLY NOTED OTHERWISE.
 - ALL OFF-SITE NON-DECORATIVE AC PAVEMENTS SHALL RECEIVE A FOG SEAL IN ACCORDANCE WITH SECTION 37 OF THE CALTRANS STANDARD SPECIFICATIONS PRIOR TO STRIPING. DECORATIVE PAVEMENTS AND P.C.C. AREAS SHALL BE ADEQUATELY PROTECTED FROM OVERSPRAY, AND CONTRACTOR SHALL BE RESPONSIBLE FOR CLEANUP OF OVER-APPLIED FOG SEAL.
- THE PAVING CONTRACTOR SHALL ADJUST ALL MANHOLE, LAMPHOLE AND WATER VALVE CASTINGS AND COVERS TO FINISH GRADE AFTER PAVEMENT IMPROVEMENTS ARE COMPLETE.

STRIPING AND SIGNAGE NOTES:

- ALL SIGNING AND STRIPING WORK SHALL CONFORM TO STATE OF CALIFORNIA DEPARTMENT OF TRANSPORTATION STANDARD SPECIFICATIONS AND STANDARD PLANS, THE LATEST EDITION OF THE CITY STANDARDS, THE LATEST EDITION OF THE STATE OF CALIFORNIA MANUAL ON UNIFORM TRAFFIC CONTROL DEVICES, UNIFORM SIGN CHART, THE CALIFORNIA DEPARTMENT OF TRANSPORTATION HIGHWAY DESIGN MANUAL AND THESE NOTES.
- THE DETAILS REFERRED HEREIN ARE THOSE AS SHOWN IN THE CALIFORNIA MANUAL ON UNIFORM TRAFFIC CONTROL DEVICES (NOVEMBER 7, 2014).
- THE CONTRACTOR SHALL REMOVE ALL EXISTING PAVEMENT MARKINGS AND APPURTENANCES, AS REQUIRED, TO INSTALL THE NEW STRIPING SHOWN ON THIS PLAN. USE OF WATER BLASTING FOR ALL EXISTING STRIPE REMOVAL THAT WILL NOT BE PAVED OVER PRIOR TO THE PROJECT COMPLETION IS A REQUIREMENT. METHOD OF APPROVAL TO BE APPROVED BY CALTRANS.
- THE LIMITS AND LAYOUT OF THE STRIPING, INCLUDING "NO PARKING" ZONES, SHALL BE PRELINED BY THE CONTRACTOR WITH SUPERVISION OF CALTRANS.
- THE CONTRACTOR SHALL WORK WITH YOLO COUNTY'S ENGINEERING DIVISION AND CALTRANS TO ENSURE PROPER LAYOUT OF TRAFFIC STRIPING PRIOR TO INSTALLATION. CONTRACTOR SHALL "CAT-TRACK" ALL TRAFFIC STRIPES AND LANE LINES AND OBTAIN APPROVAL FROM THE TRAFFIC AND COUNTY ENGINEER BEFORE APPLYING THERMOPLASTIC OR PAVEMENT MARKERS.
- ALL MARKINGS WITHIN THE PUBLIC RIGHT-OF-WAY TO BE INSTALLED WITH THERMOPLASTIC AND / OR RAISED PAVEMENT MARKERS EXCEPT AS NOTED ON THE PLAN.
- WHITE THERMOPLASTIC TO BE USED EXCEPT WHERE YELLOW THERMOPLASTIC IS CALLED FOR ON THE PLANS. ENHANCED WET NIGHT VISIBILITY THERMOPLASTIC MUST BE USED IN ACCORDANCE WITH THE CALTRANS STANDARDS AND SPECIFICATIONS.
- SIGN POSTS SHALL CONFORM TO THE YOLO COUNTY STANDARD DRAWINGS NO. 4-28, SHEETS 1-3.

STORM DRAIN NPDES PERMIT:

TO COMPLY WITH THE STATE OF CALIFORNIA'S STATEWIDE GENERAL NPDES PERMIT. REGULATING DISCHARGES OF STORM WATER ASSOCIATED WITH CONSTRUCTION ACTIVITY FROM SOIL DISTURBANCES OF 1 ACRE OR MORE. A NOTICE OF INTENT (N.O.I.) TO COMPLY WITH THE TERMS OF THE GENERAL PERMIT TO DISCHARGE STORM WATER ASSOCIATED WITH CONSTRUCTION ACTIVITY MUST BE FILED AND APPROPRIATE FEE PAID PRIOR TO COMMENCEMENT OF CONSTRUCTION. THE N.O.I. CAN BE OBTAINED BY ENTERING THE PROJECT INFORMATION AND UPLOADING THE PROJECT SWPPP ONTO THE SMARTS WEBSITE. IN ADDITION, AT THE CONCLUSION OF THE PROJECT, A NOTICE OF TERMINATION (N.O.T.) MUST ALSO BE FILED. SUBMIT THE FEE, N.O.I., AND N.O.T. TO THE STATE WATER RESOURCES CONTROL BOARD VIA THE SMARTS WEBSITE.

STATE WATER RESOURCES CONTROL BOARD SMARTS WEBSITE ADDRESS:
[HTTPS://SMARTS.WATERBOARDS.CA.GOV/SMARTS/FACES/SWSMARTSLOGIN.XHTML](https://smarts.waterboards.ca.gov/smarts/faces/swsmartslogin.xhtml)

NOI FILE DATE: _____




WDDI NO: _____

MVE - TRAFFIC CONTROL

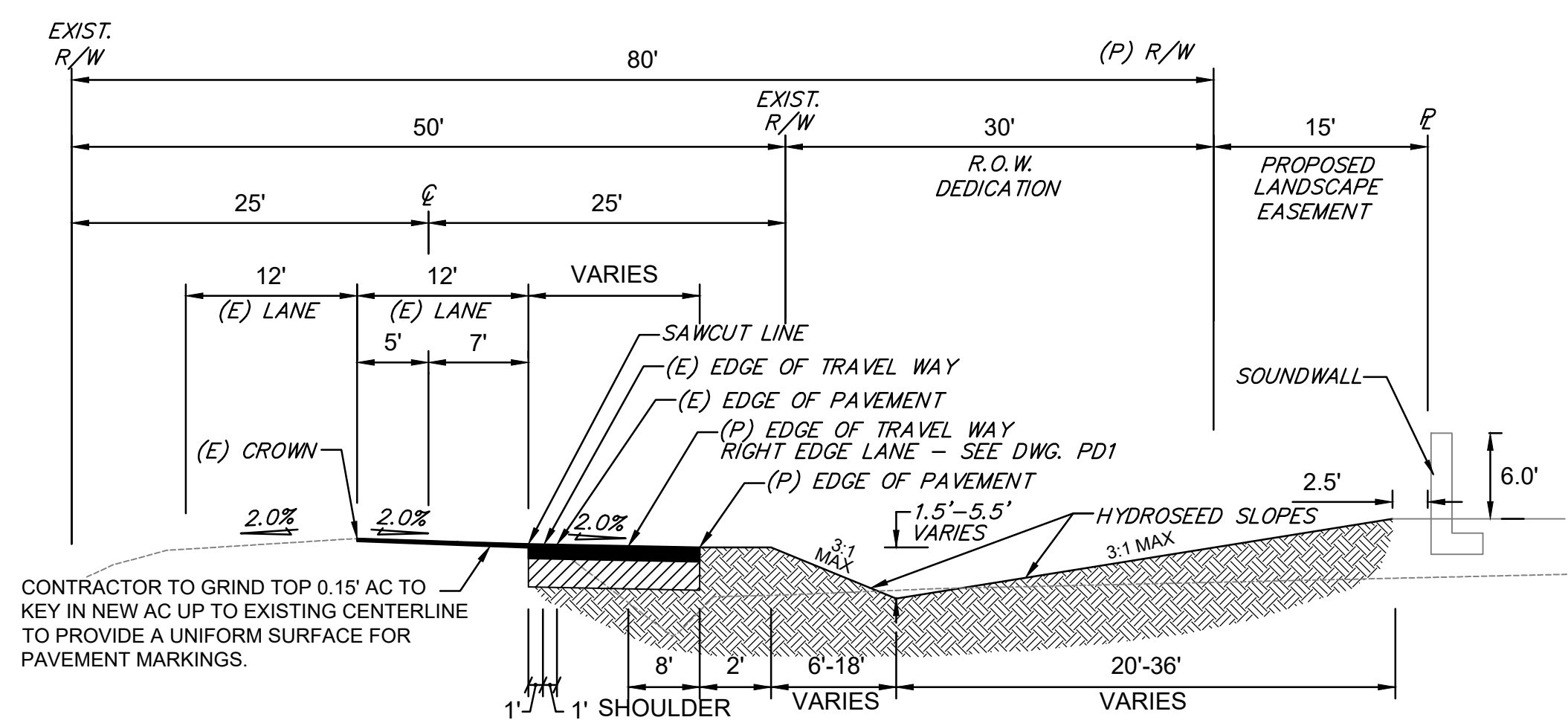
- THE CONTRACTOR SHALL REMOVE AND REPLACE ALL EXISTING PAVEMENT MARKINGS THAT WOULD CONFLICT WITH EXISTING TRAFFIC PATTERNS. THE CONTRACTOR WILL BE RESPONSIBLE FOR ANY TEMPORARY STRIPING REQUIRED. ALL PROPOSED STRIPING SHALL BE PAINTED ONLY.
- THE CONTRACTOR SHALL PROVIDE AND MAINTAIN A SAFE AND ADEQUATE MEANS OF CHANNELIZING PEDESTRIAN TRAFFIC AROUND ALL WORK AREAS THROUGHOUT THE PERIOD OF CONSTRUCTION. ALL SUCH CHANNELIZATION SHALL BE ARRANGED TO PREVENT PEDESTRIANS FROM HAVING TO ENTER THE ROADWAY IN ORDER TO PASS AROUND THE WORK AREA.
- MAINTENANCE OF TRAFFIC: THE CONTRACTOR SHALL CONDUCT HIS WORK TO INTERFERE AS LITTLE AS POSSIBLE WITH PUBLIC TRAVEL, WHETHER VEHICULAR OR PEDESTRIAN. WHENEVER IT IS NECESSARY TO CROSS, OBSTRUCT, OR CLOSE ROADS, DRIVEWAYS AND WALKS, WHETHER PUBLIC OR PRIVATE, THE CONTRACTOR SHALL PROVIDE AND MAINTAIN SUITABLE AND SAFE DETOURS, OR TEMPORARY EXPEDIENTS FOR THE ACCOMMODATION OF PUBLIC AND PRIVATE TRAVEL AND SHALL GIVE REASONABLE NOTICE TO OWNERS OF PRIVATE DRIVES BEFORE INTERFERING WITH THEM. SUCH MAINTENANCE OF TRAFFIC WILL NOT BE REQUIRED WHEN THE CONTRACTOR HAS OBTAINED PERMISSION FROM THE OWNER AND TENANT OF PRIVATE PROPERTY, OR FROM AUTHORITY HAVING JURISDICTION OVER PUBLIC PROPERTY INVOLVED, TO OBSTRUCT TRAFFIC AT THE DESIGNATED POINT.
- THE CONTRACTOR SHALL ADHERE TO ALL REQUIREMENTS OF THE LATEST EDITION OF THE STATE OF CALIFORNIA, MANUAL OF TRAFFIC CONTROLS FOR CONSTRUCTION AND MAINTENANCE ZONES. ANY PROPOSED DEVIATION OR MODIFICATIONS TO THESE TRAFFIC CONTROL REQUIREMENTS SHALL BE SUBMITTED TO THE COUNTY FOR APPROVAL.
- THE CONTRACTOR SHALL COMPLY WITH ALL LOCAL, STATE, AND FEDERAL SAFETY REGULATIONS PERTAINING TO HIS OPERATIONS. HE SHALL PROVIDE ALL LIGHTS, SIGNS, BARRICADES, FLAG MEN OR OTHER DEVICES NECESSARY FOR PUBLIC SAFETY. THE CONTRACTOR'S ATTENTION IS CALLED TO THE REQUIREMENTS OF TITLE 8, CALIFORNIA ADMINISTRATIVE CODE, SUBCHAPTER 4, ARTICLE 6, "EXCAVATIONS, TRENCHES, EARTHWORK."
- BARRICADES AND LIGHTS: ALL STREETS, ROADS, HIGHWAYS, AND OTHER PUBLIC THOROUGHFARES WHICH ARE CLOSED TO TRAFFIC SHALL BE PROTECTED BY EFFECTIVE BARRICADES ON WHICH SHALL BE PLACED ACCEPTABLE WARNING SIGNS. BARRICADES SHALL BE LOCATED AT THE NEAREST INTERSECTING STREET ON EACH SIDE OF THE BLOCKED SECTION AS INDICATED ON THE PLAN OR AS REQUIRED BY AUTHORITY HAVING JURISDICTION.
- ALL BARRICADES AND OBSTRUCTIONS SHALL BE ILLUMINATED WITH WARNING LIGHTS FROM SUNSET TO SUNRISE. MATERIAL STORAGE AND CONDUCT OF THE WORK ON OR ALONGSIDE PUBLIC STREETS AND HIGHWAYS SHALL CAUSE THE MINIMUM OBSTRUCTION AND INCONVENIENCE TO THE TRAVELING PUBLIC.
- ALL BARRICADES, SIGNS, LIGHTS AND OTHER PROTECTIVE DEVICES SHALL BE INSTALLED AND MAINTAINED IN CONFORMITY WITH APPLICABLE STATUTORY REQUIREMENTS AND, WHERE WITHIN HIGHWAY RIGHT-OF-WAY, AS REQUIRED BY THE AUTHORITY HAVING JURISDICTION THEREOVER.
- NOTICES TO OWNERS AND AUTHORITIES: THE CONTRACTOR SHALL NOTIFY OWNERS OF ADJACENT PROPERTIES AND UTILITIES WHEN PROSECUTION OF THE WORK MAY AFFECT THEM. WHEN IT IS NECESSARY TO TEMPORARILY DENY ACCESS TO PROPERTY, OR WHEN ANY UTILITY SERVICE CONNECTION MUST BE INTERRUPTED, THE CONTRACTOR SHALL GIVE NOTICES NOT LESS THAN 48 HOURS IN ADVANCE TO ENABLE THE AFFECTED PERSONS TO PROVIDE FOR THEIR NEEDS. NOTICES WILL CONFORM TO ANY APPLICABLE LOCAL ORDINANCE AND, WHETHER DELIVERED ORALLY OR IN WRITING, WILL INCLUDE APPROPRIATE INFORMATION CONCERNING THE INTERRUPTION AND INSTRUCTIONS ON HOW TO LIMIT THEIR INCONVENIENCE.
- UTILITIES AND OTHER CONCERNED AGENCIES SHALL BE CONTACTED AT LEAST 48 HOURS PRIOR TO CUTTING OR CLOSING A STREET OR OTHER TRAFFIC AREA, EXCAVATING NEAR UNDERGROUND UTILITIES OR POLE LINES, OR PERFORMING WORK WHICH AFFECT THEIR OPERATIONS. THE CONTRACTOR SHALL CONTACT UNDERGROUND SERVICE ALERT AT (800) 642-2444 TO LOCATE ALL UNDERGROUND UTILITIES PRIOR TO CONSTRUCTION.
- SITE ADMINISTRATION: THE CONTRACTOR SHALL BE RESPONSIBLE FOR ALL AREAS OF THE SITE USED BY THEM AND ALL SUBCONTRACTORS IN THE PERFORMANCE OF THE WORK. THE CONTRACTOR WILL EXERT FULL CONTROL OVER ALL THE ACTIONS OF ALL EMPLOYEES AND OTHER PERSONS WITH RESPECT TO THE USE AND PRESERVATION OF PROPERTY AND FACILITIES, EXCEPT SUCH CONTROLS AS MAY BE SPECIFICALLY RESERVED TO THE OWNER OR OTHERS. THE CONTRACTOR HAS THE RIGHT TO EXCLUDE FROM THE SITE ALL PERSONS WHO HAVE NO PURPOSE RELATED TO THE WORK OR ITS INSPECTION, AND MAY REQUIRE ALL PERSONS ON THE SITE (EXCEPT OWNERS EMPLOYEES) TO OBSERVE THE SAME REGULATIONS AS THEY REQUIRE OF THEIR EMPLOYEES.
- THE CONTRACTOR SHALL PREPARE A TRAFFIC CONTROL PLAN AND SUBMIT TO THE COUNTY FOR APPROVAL PRIOR TO CONSTRUCTION. THE CONTRACTOR SHALL MAINTAIN TRAFFIC & ACCESS TO DRIVEWAYS AT ALL TIMES.
- ALL CONSTRUCTION VEHICLES (E.G. CEMENT TRUCKS, GRADERS, TRACTORS, ETC.) SHALL USE A DESIGNATED TRAVEL ROUTE TO THE CONSTRUCTION SITE. THE DESIGNATED ROUTE SHALL BY-PASS THE TOWN OF ESPARTO. THE DESIGNATED TRAVEL ROUTE SHALL BE LIMITED TO STATE ROUTE 16 WEST TO COUNTY ROAD 21A; THENCE NORTH ON COUNTY ROAD 85B; THENCE EAST ON STATE ROUTE 16. ANY DEVIATION IN TRAFFIC ROUTES SHALL BE SUBJECT TO THE APPROVAL OF THE PLANNING AND PUBLIC WORKS DIRECTOR.
- THE CONTRACTOR SHALL INSTALL FENCING ALONG SOUTHERN BOUNDARY OF THE PROJECT TO PROHIBIT VEHICULAR AND PEDESTRIAN TRAFFIC TO/FROM THE SOUTH.

DIST	COUNTY	ROUTE	POST MILE	SHEET NO.	TOTAL SHEETS
3	YOL	16	27.00/34.25	2	8

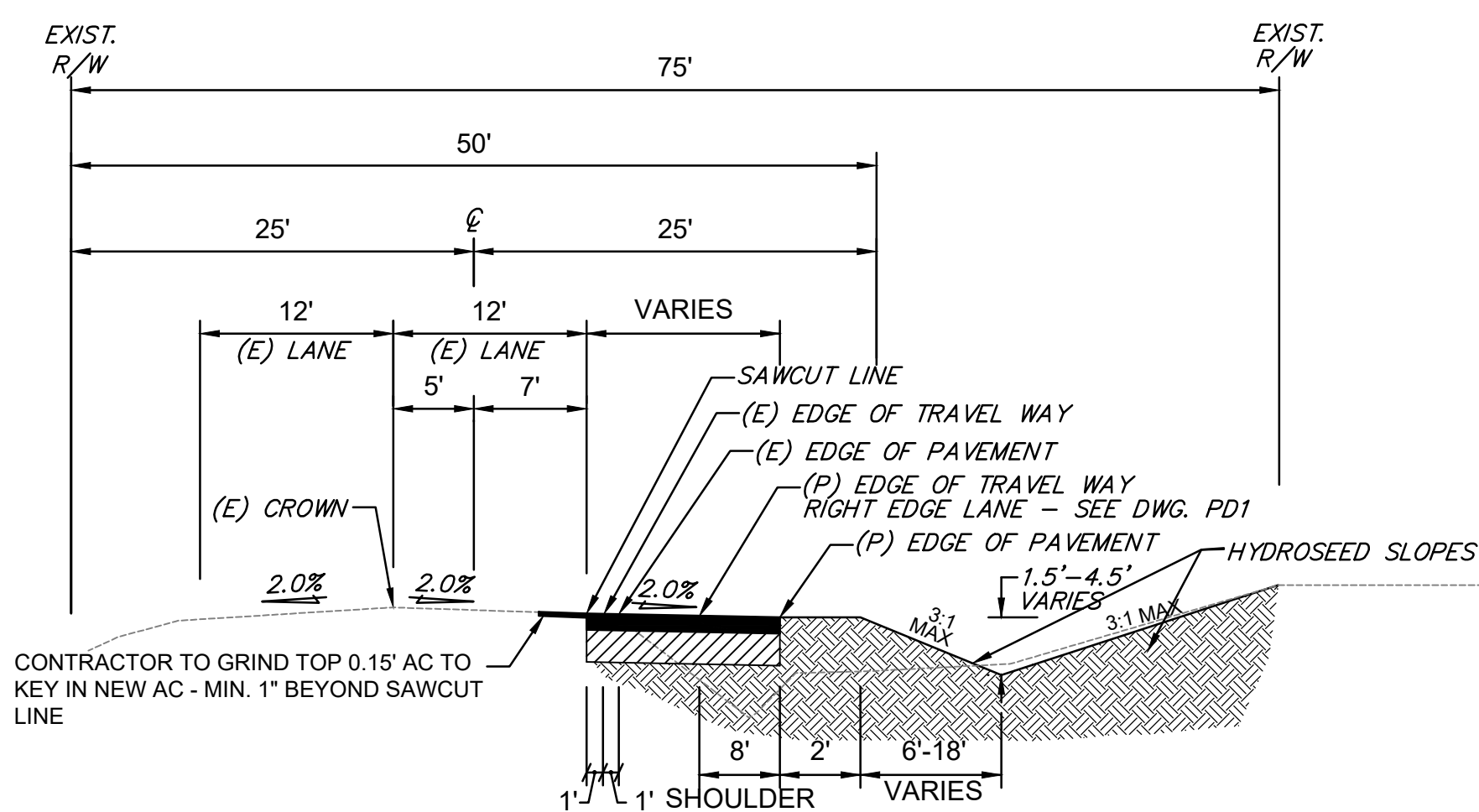
REVIEW PURPOSES ONLY - NOT FOR CONSTRUCTION

 Know what's below. Call before you dig.	<p>UNAUTHORIZED CHANGES & USES</p> <p>THE ENGINEER PREPARING THESE PLANS WILL NOT BE RESPONSIBLE FOR, OR LIABLE FOR, UNAUTHORIZED CHANGES TO OR USES OF THESE PLANS. ALL CHANGES TO THE PLANS MUST BE IN WRITING AND MUST BE APPROVED BY THE PREPARER OF THESE PLANS.</p>	Drawn By: <i>RG/JSH</i> Issue Date: <i>9/15/22</i> Job No.: <i>NC07254E</i> Checked: <i>DAM</i> Design By: <i>RG/JSH</i>	REVISIONS <table border="1" style="width: 100%; border-collapse: collapse;"> <thead> <tr> <th>NO.</th> <th>DATE</th> <th>ISSUED FOR</th> <th>BY</th> </tr> </thead> <tbody> <tr><td> </td><td> </td><td> </td><td> </td></tr> <tr><td> </td><td> </td><td> </td><td> </td></tr> <tr><td> </td><td> </td><td> </td><td> </td></tr> </tbody> </table>	NO.	DATE	ISSUED FOR	BY													 PRELIMINARY 9/15/22	 1117 L Street, Modesto, CA 95354 866.526.4214 www.mve.net Northern California Southern California Nevada	STATE OF CALIFORNIA DEPARTMENT OF TRANSPORTATION STATE HIGHWAY 16 IMPROVEMENTS GENERAL NOTES AND SPECIFICATIONS YOLO COUNTY CALIFORNIA	DWG. GN1 SHEET 2 OF 8
		NO.	DATE	ISSUED FOR	BY																		
STATE OF CALIFORNIA DEPARTMENT OF TRANSPORTATION																							
STATE HIGHWAY 16 IMPROVEMENTS																							

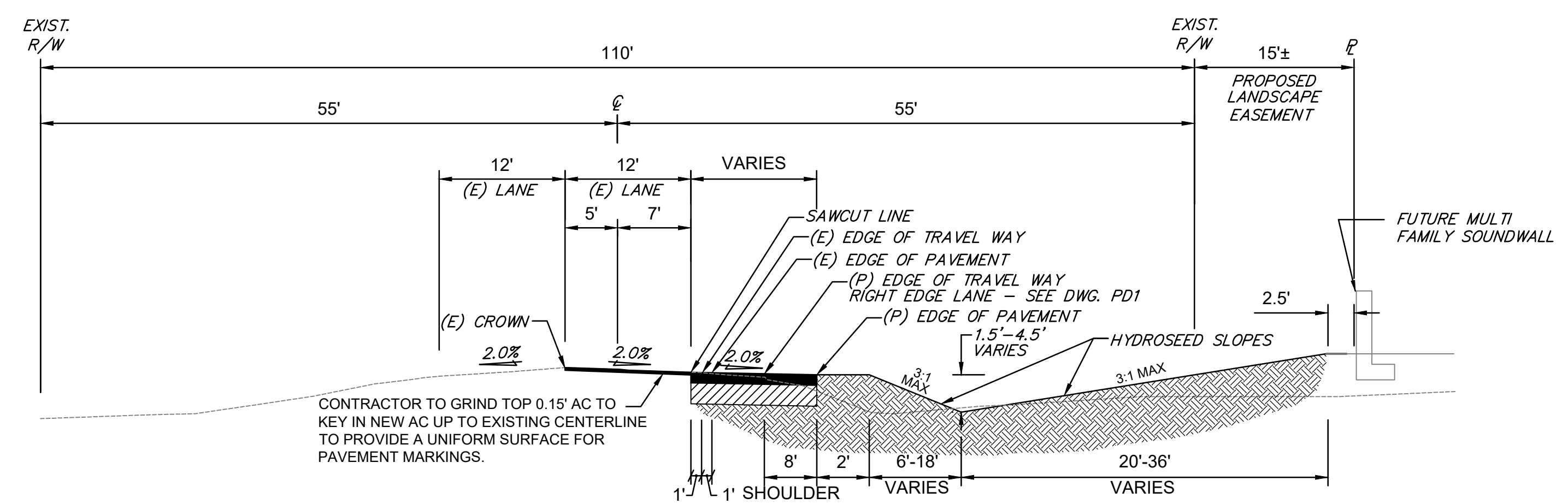
DIST	COUNTY	ROUTE	POST MILE	SHEET NO.	TOTAL SHEETS
3	YOLO	16	27.00/34.25	3	8



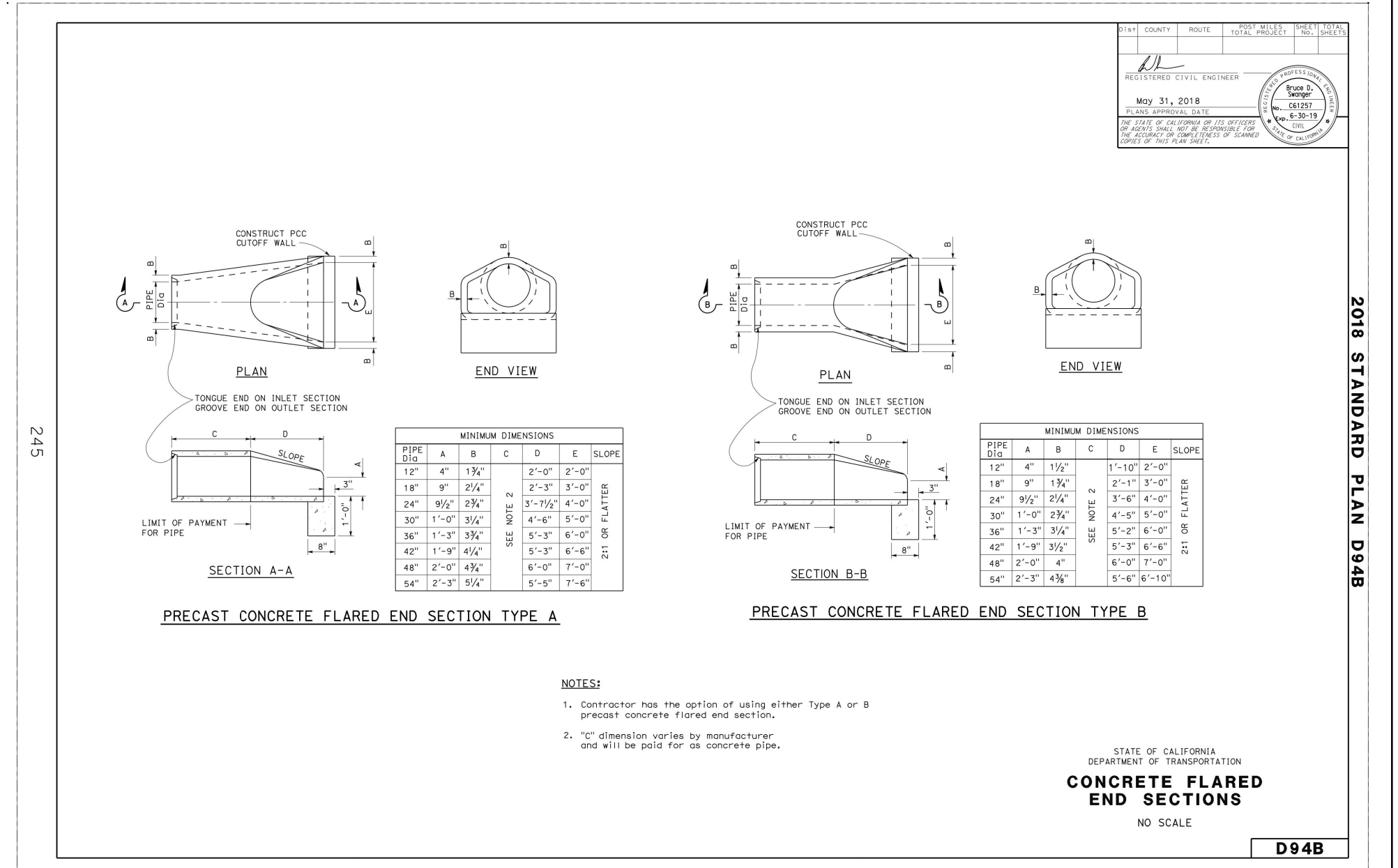
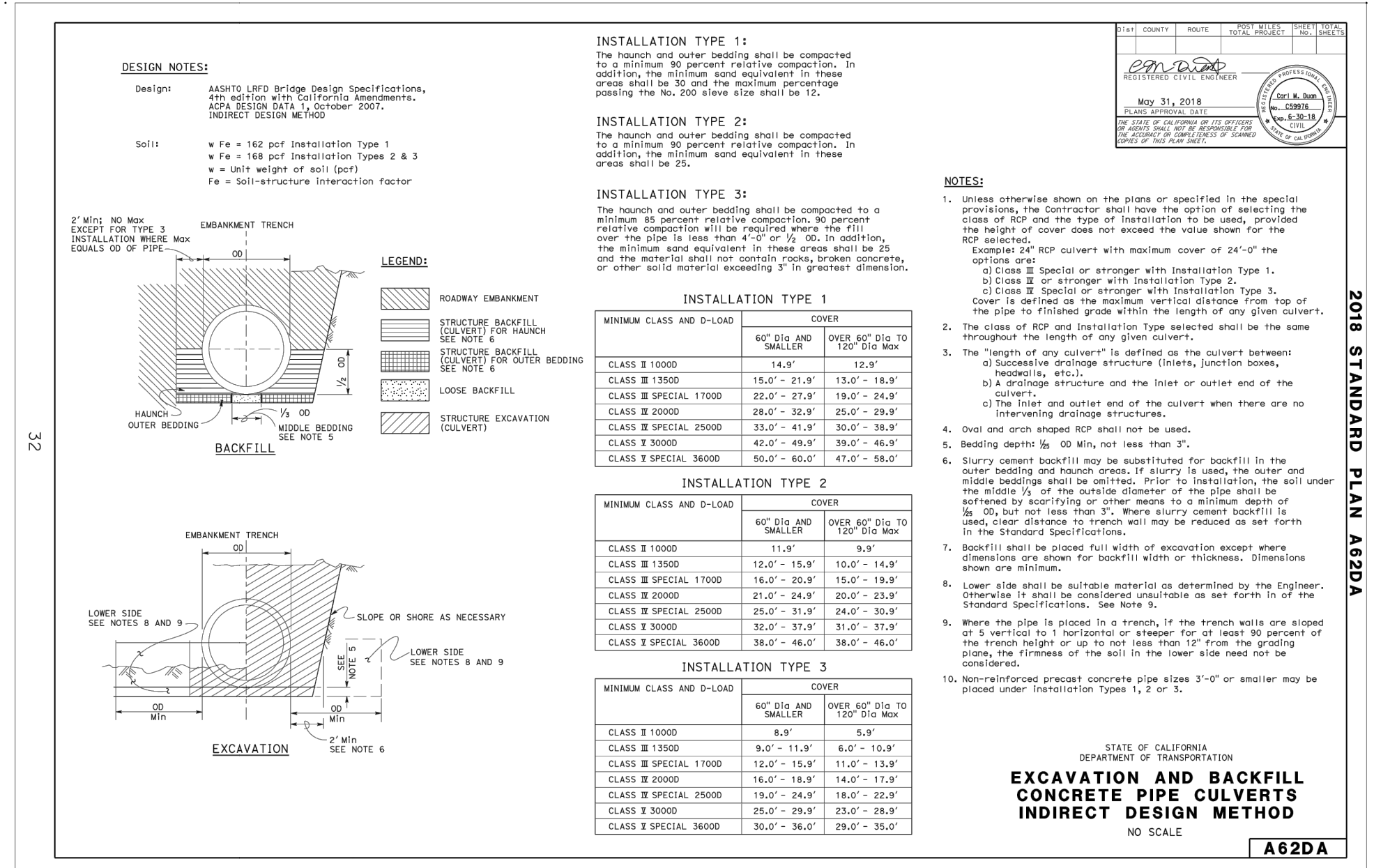
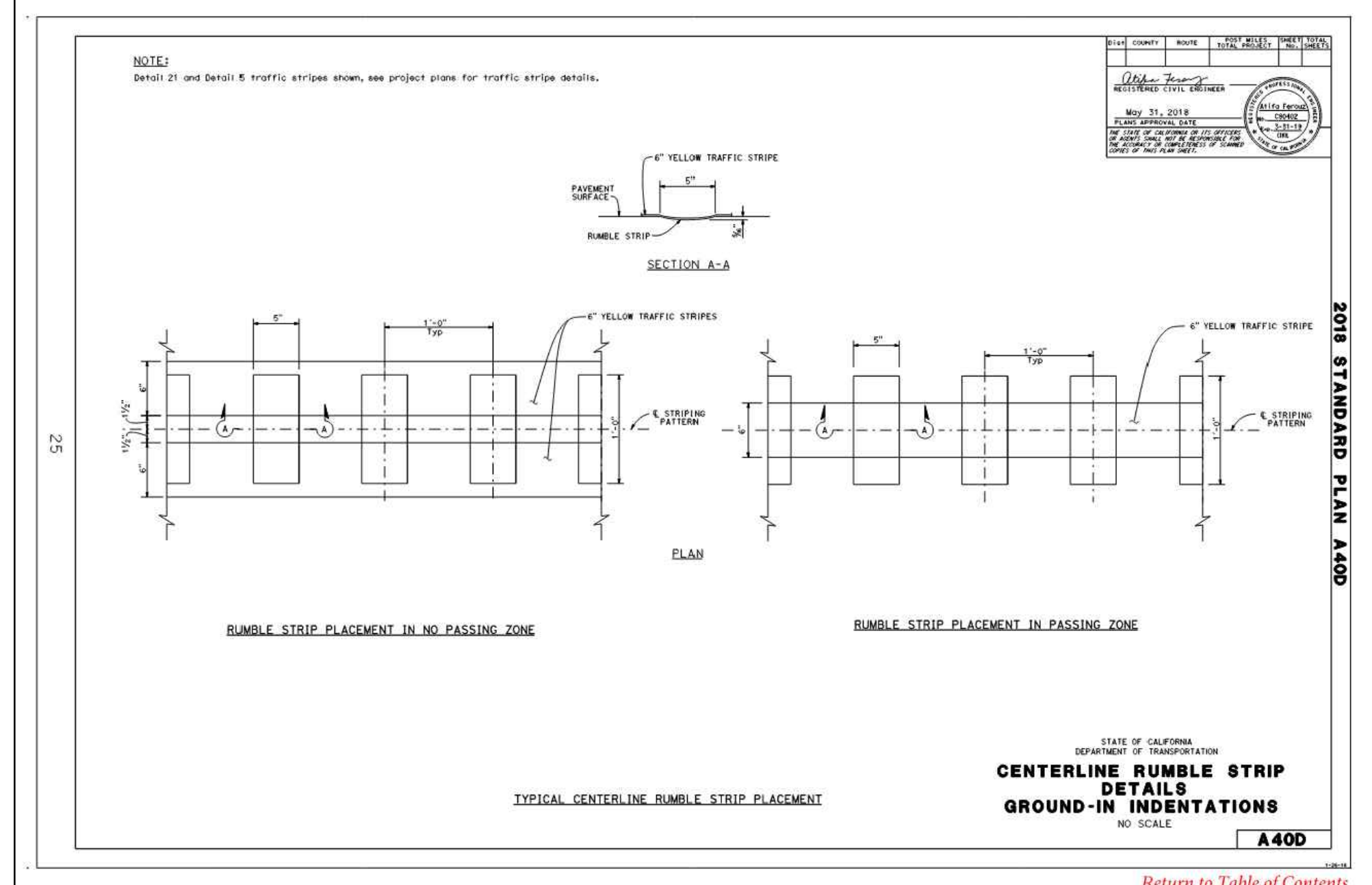
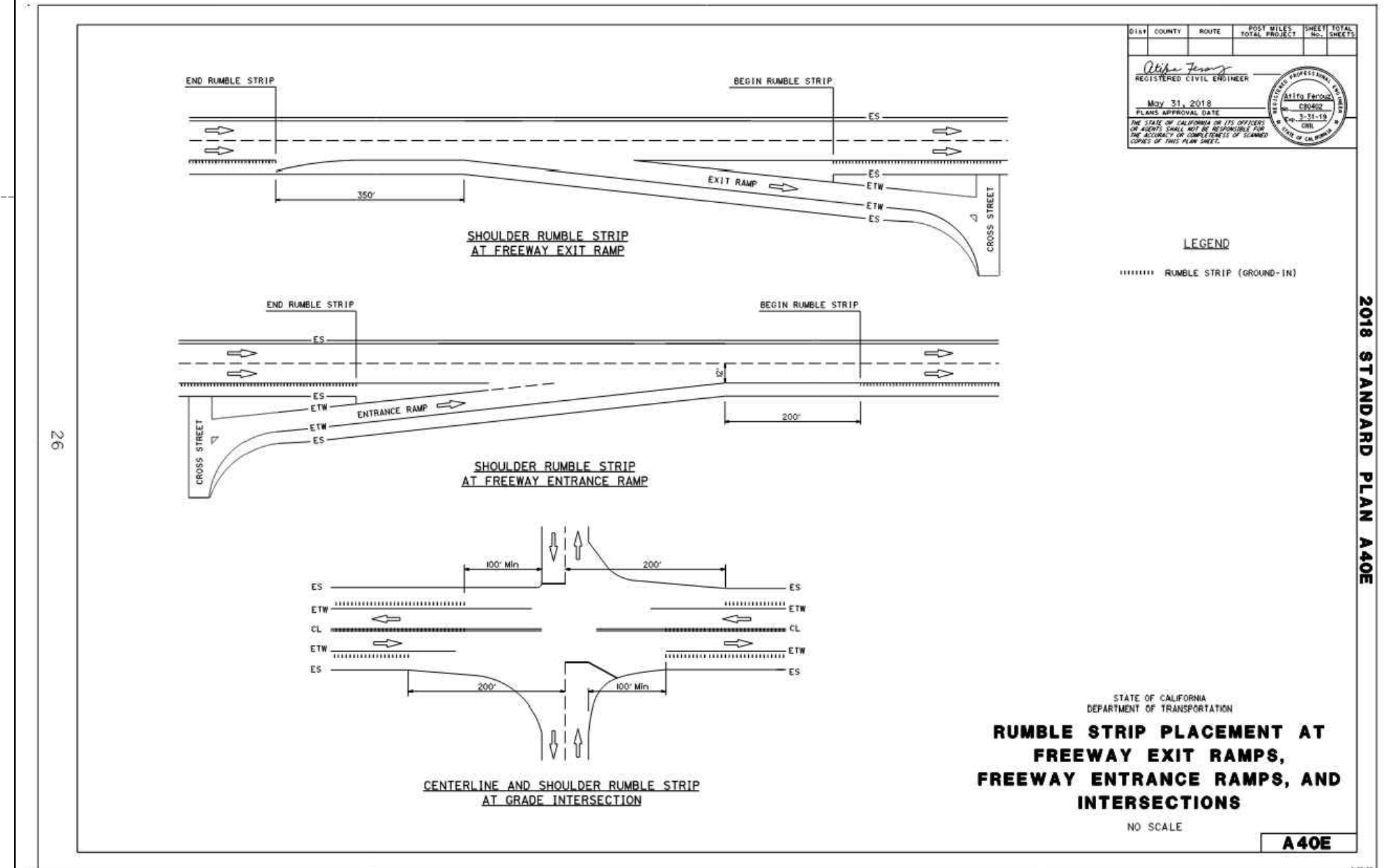
B STATE ROUTE 16 - 80' R.O.W. SECTION



C STATE ROUTE 16 - 75' R.O.W. SECTION



A STATE ROUTE 16 - 110' R.O.W. SECTION



TYPE A AC / CLASS 2 AGG. BASE	T.I.	"R"
STATE HIGHWAY ROUTE 16 = 8" AC / 26" AB / 6" SG	12	10

R-VALUES / PAVEMENT SECTIONS SHOWN HEREON ARE BASED UPON GEOTECHNICAL REPORT ENTITLED ESPARTO - COTTAGE SERIES AS PREPARED BY WALLACE-KUHL AND ASSOCIATES, INC. DATED FEBRUARY 22, 2008 FILE NO. 7885.01 AND THEIR SUPPLEMENTAL PAVING RECOMMENDATION LETTER DATED SEPTEMBER 3, 2008. UPON RECEIPT OF R-VALUE TESTING DURING CONSTRUCTION, THE CONTRACTOR SHALL CONTACT MVE FOR REVIEW OF EARTHWORK ANALYSIS.

STRUCTURAL SECTION TO BE USED FOR ALL WIDENING, PAVING, TRAVEL LANES AND SHOULDERS.

Know what's below. Call before you dig.

PRIOR TO CONSTRUCTION THE CONTRACTOR SHALL CALL UNDERGROUND SERVICE ALERT FOR UNDERGROUND CLEARANCE. USA WILL PROVIDE INFORMATION ABOUT OR LOCATE AND MARK UNDERGROUND FACILITIES.

UNAUTHORIZED CHANGES & USES

THE ENGINEER PREPARING THESE PLANS WILL NOT BE RESPONSIBLE FOR, OR LIABLE FOR, UNAUTHORIZED CHANGES TO OR USES OF THESE PLANS. ALL CHANGES TO THE PLANS MUST BE IN WRITING AND MUST BE APPROVED BY THE PREPARER OF THESE PLANS.

Drawn By: RG/JSH
Issue Date: 9/15/22
Job No.: NC07254E
Checked: DAM
Design By: RG/JSH

NO.	DATE	ISSUED FOR	BY

REGISTERED PROFESSIONAL ENGINEER
DEREK A. MARRAS
No. 76312
Exp. 12/31/2022
CIVIL
OF CALIFORNIA
9/15/22

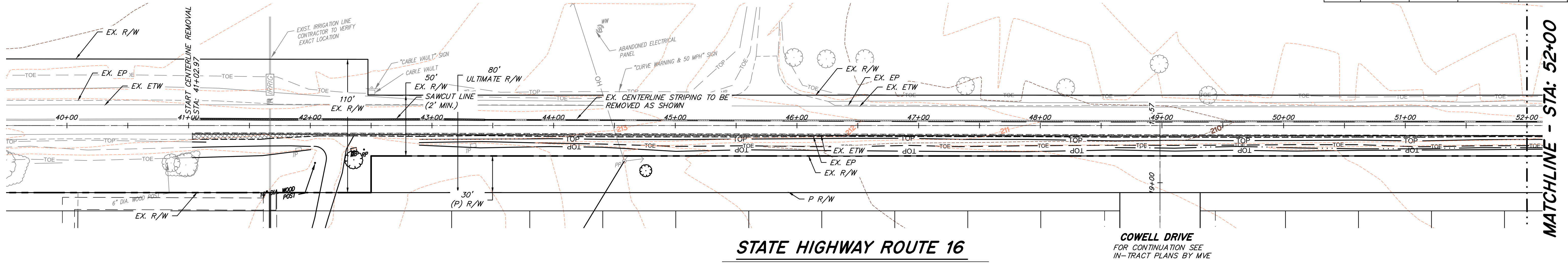
1117 L Street, Modesto, CA 95354 | 866.526.4214 | www.mve.net
Northern California | Southern California | Nevada

STATE OF CALIFORNIA DEPARTMENT OF TRANSPORTATION
STATE HIGHWAY 16 IMPROVEMENTS
SECTIONS AND DETAILS
YOLO COUNTY CALIFORNIA

DWG. XS1
SHEET 3 OF 8

2018 STANDARD PLAN A40E
2018 STANDARD PLAN A40D
2018 STANDARD PLAN D94B
REVIEW PURPOSES ONLY - NOT FOR CONSTRUCTION
Print September 15, 2022 at 10:07 AM X:\CIVIL\3D\Civil_3D\Projects\NC07254E\Circular\Proper\PLAN\AS\OPT-SITE\103-NC07254-FOX51.dwg

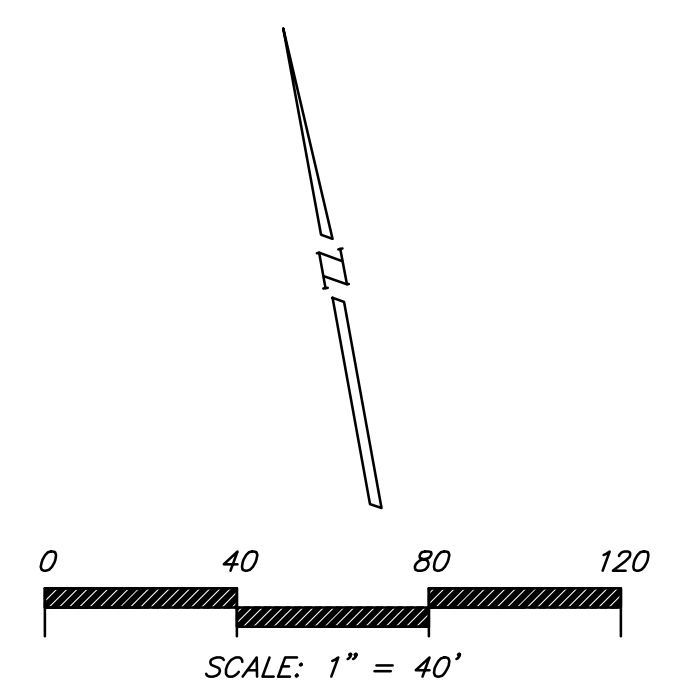
DIST	COUNTY	ROUTE	POST MILE	SHEET NO.	TOTAL SHEETS
3	YOLO	16	27.00/34.25	4	8



MATCHLINE - STA: 52+00

STATE HIGHWAY ROUTE 16

COWELL DRIVE
FOR CONTINUATION SEE
IN-TRACT PLANS BY MVE



LEGEND

- SAWCUT AND REMOVE PAVEMENT
- GRIND EX. PAVEMENT MARKING AND CHIP SEAL AND OVERLAY WITH DENSE GRADE OR OPEN GRADE A.C.

NOTES

1. CONTRACTOR TO REMOVE AND DISPOSE OF ALL SEPTIC SYSTEM APPURTENANCES, INCLUDING, BUT NOT LIMITED TO, SEPTIC TANKS, LEACH FIELDS. CONTRACTOR IS RESPONSIBLE TO OBTAIN ALL APPROPRIATE PERMITS AND INSPECTIONS THAT MAY BE REQUIRED IN ACCORDANCE WITH CITY / COUNTY DEPARTMENT OF ENVIRONMENTAL HEALTH REQUIREMENTS.
2. CONTRACTOR IS RESPONSIBLE TO PROPERLY ABANDON ALL WELLS ON THE SITE. CONTRACTOR IS RESPONSIBLE TO OBTAIN ALL APPROPRIATE PERMITS AND INSPECTIONS THAT MAY BE REQUIRED IN ACCORDANCE WITH CITY / COUNTY DEPARTMENT OF ENVIRONMENTAL HEALTH REQUIREMENTS.
3. CONTRACTOR SHALL COORDINATE ALL OVERHEAD UTILITY RELOCATION AND REMOVAL WITH THE RESPECTIVE UTILITY COMPANIES.
4. CONTRACTOR SHALL BE RESPONSIBLE TO COORDINATE BETWEEN ADJACENT PROPERTY OWNERS REGARDING FENCE REMOVALS AND RELOCATIONS ALONG SHARED PROPERTY LINES. WRITTEN PERMISSION FROM, OR FORMAL AGREEMENTS WITH, ADJACENT PROPERTY OWNERS SHALL BE PROCESSED TO THE SATISFACTION OF THE CITY / COUNTY PRIOR TO DEMOLITION OF FENCES.
5. CONTRACTOR SHALL CAP ALL IRRIGATION LINES WITH A WATER TIGHT SEAL AT THE PROPERTY LINE AND REMOVE ALL PIPING AND STRUCTURES FROM THE SITE. CONTRACTOR SHALL COORDINATE ALL WORK WITH THE IRRIGATION DISTRICT.
6. THE CONTRACTOR SHALL REMOVE THE EXISTING HOUSE, SHEDS, GARAGE AND ALL OTHER BUILDINGS AND APPURTENANCES.
7. THE CONTRACTOR SHALL OBTAIN A DEMOLITION PERMIT FROM BUILDING DEPARTMENT, IF REQUIRED, PRIOR TO BEGINNING WORK.
8. ALL CONCRETE SHALL BE SAWCUT IN NEAT STRAIGHT LINES AT THE NEAREST CRACK CONTROL JOINT.
9. ALL TREES ARE TO BE REMOVED WITHIN THIS PROJECT'S LIMITS PRIOR TO CONSTRUCTION.
10. THE CONTRACTOR SHALL REMOVE ALL VEGETATION AND DELETERIOUS MATERIALS FROM THE SITE UNLESS NOTED OTHERWISE. ALL EXISTING WELLS AND SEPTIC TANKS SHALL BE REMOVED AND/OR ABANDONED PER THE REQUIREMENTS OF ALL LOCAL, STATE AND FEDERAL REGULATIONS. THE COST TO PERFORM THIS WORK SHALL BE INCLUDED IN THE LUMP SUM CLEARING COST.
11. USE OF WATER BLASTING FOR ALL EXISTING STRIPE REMOVAL THAT WILL NOT BE PAVED OVER PRIOR TO PROJECT COMPLETION IS A REQUIREMENT.

UTILITY NOTES

EXISTING UNDERGROUND UTILITIES SHOWN ARE TAKEN FROM RECORD INFORMATION TO AID THE CONTRACTOR. CONTRACTOR SHALL VERIFY LOCATION (BOTH VERTICAL AND HORIZONTAL) OF ALL EXISTING UNDERGROUND LINES AND NOTIFY ENGINEER OF ANY DISCREPANCIES OR CONFLICTS PRIOR TO WORK.

A) EXISTING UTILITIES ARE SHOWN AS THEY ARE BELIEVED TO EXIST FROM RECORDS BY OTHERS. THE OWNER AND ENGINEER DO NOT ACCEPT RESPONSIBILITY FOR THEIR ACCURACY. PRIOR TO COMMENCING WORK, THE CONTRACTOR SHALL HAVE EACH UTILITY COMPANY ACCURATELY LOCATE IN THE FIELD THEIR MAINS AND SERVICE LINES. IT SHALL BE THE CONTRACTOR'S RESPONSIBILITY TO PROTECT ALL EXISTING UTILITIES, SO THAT NO DAMAGE RESULTS TO THEM DURING THE PERFORMANCE OF THIS CONTRACT. CONTACT U.S.A. AT PHONE NO. 800-227-2600.

NOTE : SECTION 1540 (A) (1) OF THE CONSTRUCTION SAFETY ORDERS (TITLE 8 CALIFORNIA ADMINISTRATION CODE SECTION 1540) ISSUED BY THE OCCUPATIONAL SAFETY AND HEALTH STANDARDS BOARD PURSUANT TO THE CALIFORNIA OCCUPATIONAL SAFETY AND HEALTH ACT OF 1973 AS AMENDED, WHICH STATES :

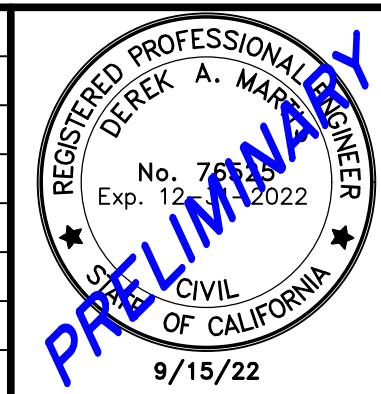
" PRIOR TO OPENING AN EXCAVATION, EFFORT SHALL BE MADE TO DETERMINE WHETHER UNDERGROUND INSTALLATION I.E., SEWER, WATER, FUEL, ELECTRIC LINES, ETC. WILL BE ENCOUNTERED AND IF SO, WHERE SUCH UNDERGROUND INSTALLATIONS ARE LOCATED. WHEN EXCAVATION APPROACHES THE APPROXIMATE LOCATION OF SUCH AN INSTALLATION, THE EXACT LOCATION SHALL BE DETERMINED BY CAREFUL PROBING OR HAND DIGGING AND WHEN IT IS UNCOVERED, ADEQUATE PROTECTION SHALL BE PROVIDED FOR THE INSTALLATION. ALL KNOWN OWNERS OF UNDERGROUND FACILITIES IN THE AREA CONCERNED SHALL BE ADVISED OF PROPOSED WORK AT LEAST 48 HOURS PRIOR TO THE START OF ACTUAL EXCAVATION. "

UNAUTHORIZED CHANGES & USES

THE ENGINEER PREPARING THESE PLANS WILL NOT BE RESPONSIBLE FOR, OR LIABLE FOR, UNAUTHORIZED CHANGES TO OR USES OF THESE PLANS. ALL CHANGES TO THE PLANS MUST BE IN WRITING AND MUST BE APPROVED BY THE PREPARER OF THESE PLANS.

REVISIONS				
NO.	DATE	ISSUED FOR	BY	

Drawn By: RG/JSH
Issue Date: 9/15/22
Job No.: NCO7254E
Checked: DAM
Design By: RG/JSH



MVE Inc.
1117 L Street, Modesto, CA 95354 | 866.526.4214 | www.mve.net
Northern California | Southern California | Nevada

STATE OF CALIFORNIA DEPARTMENT OF TRANSPORTATION
STATE HIGHWAY 16 IMPROVEMENTS
TOPOGRAPHY SURVEY AND DEMOLITION PLAN
YOLO COUNTY CALIFORNIA

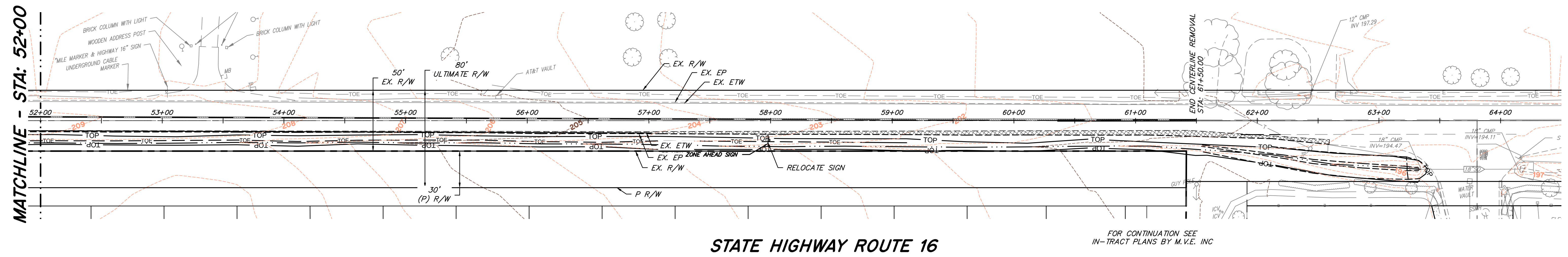
DWG. **TO1**
SHEET **4**
OF **8**

811
Know what's below.
Call before you dig.

PRIOR TO CONSTRUCTION THE CONTRACTOR SHALL CALL UNDERGROUND SERVICE ALERT FOR UNDERGROUND CLEARANCE. USA WILL PROVIDE INFORMATION ABOUT OR LOCATE AND MARK UNDERGROUND FACILITIES.

REVIEW PURPOSES ONLY - NOT FOR CONSTRUCTION

DIST	COUNTY	ROUTE	POST MILE	SHEET NO.	TOTAL SHEETS
3	YOLO	16	27.00/34.25	5	8



STATE HIGHWAY ROUTE 16

FOR CONTINUATION SEE
IN-TRACT PLANS BY M.V.E. INC

NOTES

- CONTRACTOR TO REMOVE AND DISPOSE OF ALL SEPTIC SYSTEM APPURTENANCES, INCLUDING, BUT NOT LIMITED TO, SEPTIC TANKS, LEACH FIELDS. CONTRACTOR IS RESPONSIBLE TO OBTAIN ALL APPROPRIATE PERMITS AND INSPECTIONS THAT MAY BE REQUIRED IN ACCORDANCE WITH CITY / COUNTY DEPARTMENT OF ENVIRONMENTAL HEALTH REQUIREMENTS.
- CONTRACTOR IS RESPONSIBLE TO PROPERLY ABANDON ALL WELLS ON THE SITE. CONTRACTOR IS RESPONSIBLE TO OBTAIN ALL APPROPRIATE PERMITS AND INSPECTIONS THAT MAY BE REQUIRED IN ACCORDANCE WITH CITY / COUNTY DEPARTMENT OF ENVIRONMENTAL HEALTH REQUIREMENTS.
- CONTRACTOR SHALL COORDINATE ALL OVERHEAD UTILITY RELOCATION AND REMOVAL WITH THE RESPECTIVE UTILITY COMPANIES.
- CONTRACTOR SHALL BE RESPONSIBLE TO COORDINATE BETWEEN ADJACENT PROPERTY OWNERS REGARDING FENCE REMOVALS AND RELOCATIONS ALONG SHARED PROPERTY LINES. WRITTEN PERMISSION FROM, OR FORMAL AGREEMENTS WITH, ADJACENT PROPERTY OWNERS SHALL BE PROCESSED TO THE SATISFACTION OF THE CITY / COUNTY PRIOR TO DEMOLITION OF FENCES.
- CONTRACTOR SHALL CAP ALL IRRIGATION LINES WITH A WATER TIGHT SEAL AT THE PROPERTY LINE AND REMOVE ALL PIPING AND STRUCTURES FROM THE SITE. CONTRACTOR SHALL COORDINATE ALL WORK WITH THE IRRIGATION DISTRICT.
- THE CONTRACTOR SHALL REMOVE THE EXISTING HOUSE, SHEDS, GARAGE AND ALL OTHER BUILDINGS AND APPURTENANCES.
- THE CONTRACTOR SHALL OBTAIN A DEMOLITION PERMIT FROM BUILDING DEPARTMENT, IF REQUIRED, PRIOR TO BEGINNING WORK.
- ALL CONCRETE SHALL BE SAWCUT IN NEAT STRAIGHT LINES AT THE NEAREST CRACK CONTROL JOINT.
- ALL TREES ARE TO BE REMOVED WITHIN THIS PROJECT'S LIMITS PRIOR TO CONSTRUCTION.
- THE CONTRACTOR SHALL REMOVE ALL VEGETATION AND DELETERIOUS MATERIALS FROM THE SITE UNLESS NOTED OTHERWISE. ALL EXISTING WELLS AND SEPTIC TANKS SHALL BE REMOVED AND/OR ABANDONED PER THE REQUIREMENTS OF ALL LOCAL, STATE AND FEDERAL REGULATIONS. THE COST TO PERFORM THIS WORK SHALL BE INCLUDED IN THE LUMP SUM CLEARING COST.
- USE OF WATER BLASTING FOR ALL EXISTING STRIPE REMOVAL THAT WILL NOT BE PAVED OVER PRIOR TO PROJECT COMPETITION IS A REQUIREMENT

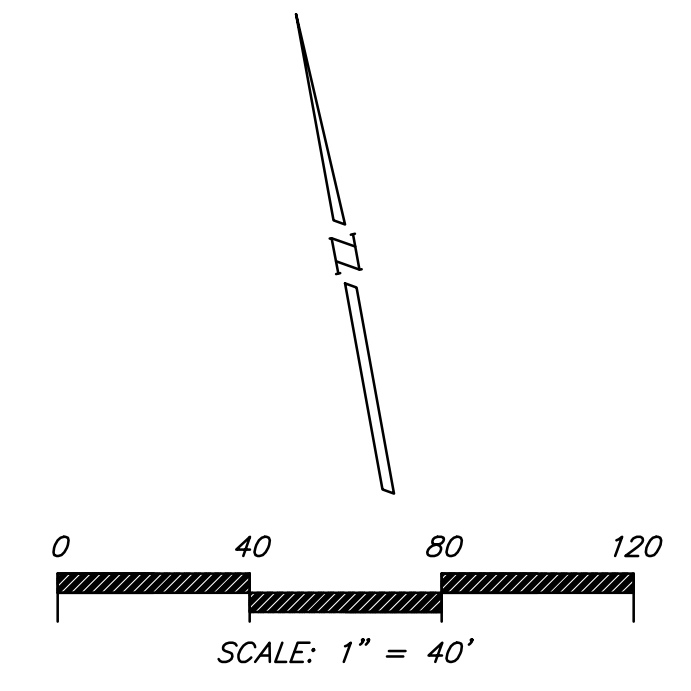
UTILITY NOTES

EXISTING UNDERGROUND UTILITIES SHOWN ARE TAKEN FROM RECORD INFORMATION TO AID THE CONTRACTOR. CONTRACTOR SHALL VERIFY LOCATION (BOTH VERTICAL AND HORIZONTAL) OF ALL EXISTING UNDERGROUND LINES AND NOTIFY ENGINEER OF ANY DISCREPANCIES OR CONFLICTS PRIOR TO WORK.

A) EXISTING UTILITIES ARE SHOWN AS THEY ARE BELIEVED TO EXIST FROM RECORDS BY OTHERS. THE OWNER AND ENGINEER DO NOT ACCEPT RESPONSIBILITY FOR THEIR ACCURACY. PRIOR TO COMMENCING WORK, THE CONTRACTOR SHALL HAVE EACH UTILITY COMPANY ACCURATELY LOCATE IN THE FIELD THEIR MAINS AND SERVICE LINES. IT SHALL BE THE CONTRACTOR'S RESPONSIBILITY TO PROTECT ALL EXISTING UTILITIES, SO THAT NO DAMAGE RESULTS TO THEM DURING THE PERFORMANCE OF THIS CONTRACT. CONTACT U.S.A. AT PHONE NO. 800-227-2600.


NOTE : SECTION 1540 (A) (1) OF THE CONSTRUCTION SAFETY ORDERS (TITLE 8 CALIFORNIA ADMINISTRATION CODE SECTION 1540) ISSUED BY THE OCCUPATIONAL SAFETY AND HEALTH STANDARDS BOARD PURSUANT TO THE CALIFORNIA OCCUPATIONAL SAFETY AND HEALTH ACT OF 1973 AS AMENDED, WHICH STATES :

" PRIOR TO OPENING AN EXCAVATION, EFFORT SHALL BE MADE TO DETERMINE WHETHER UNDERGROUND INSTALLATION I.E., SEWER, WATER, FUEL, ELECTRIC LINES, ETC. WILL BE ENCOUNTERED AND IF SO, WHERE SUCH UNDERGROUND INSTALLATIONS ARE LOCATED. WHEN EXCAVATION APPROACHES THE APPROXIMATE LOCATION OF SUCH AN INSTALLATION, THE EXACT LOCATION SHALL BE DETERMINED BY CAREFUL PROBING OR HAND DIGGING AND WHEN IT IS UNCOVERED, ADEQUATE PROTECTION SHALL BE PROVIDED FOR THE INSTALLATION. ALL KNOWN OWNERS OF UNDERGROUND FACILITIES IN THE AREA CONCERNED SHALL BE ADVISED OF PROPOSED WORK AT LEAST 48 HOURS PRIOR TO THE START OF ACTUAL EXCAVATION. "



LEGEND

- SAWCUT AND REMOVE PAVEMENT
- GRIND EX. PAVEMENT MARKING AND CHIP SEAL AND OVERLAY WITH DENSE GRADE OR OPEN GRADE A.C.



811
Know what's below.
Call before you dig.

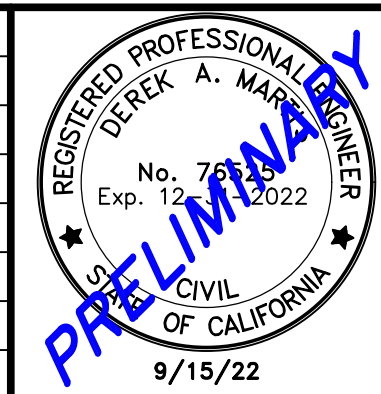
PRIOR TO CONSTRUCTION THE CONTRACTOR SHALL CALL UNDERGROUND SERVICE ALERT FOR UNDERGROUND CLEARANCE. USA WILL PROVIDE INFORMATION ABOUT OR LOCATE AND MARK UNDERGROUND FACILITIES.

UNAUTHORIZED CHANGES & USES

THE ENGINEER PREPARING THESE PLANS WILL NOT BE RESPONSIBLE FOR, OR LIABLE FOR, UNAUTHORIZED CHANGES TO OR USES OF THESE PLANS. ALL CHANGES TO THE PLANS MUST BE IN WRITING AND MUST BE APPROVED BY THE PREPARER OF THESE PLANS.

REVISIONS				
NO.	DATE	ISSUED FOR	BY	

Drawn By: RG/JSH
Issue Date: 9/15/22
Job No.: NC07254E
Checked: DAM
Design By: RG/JSH



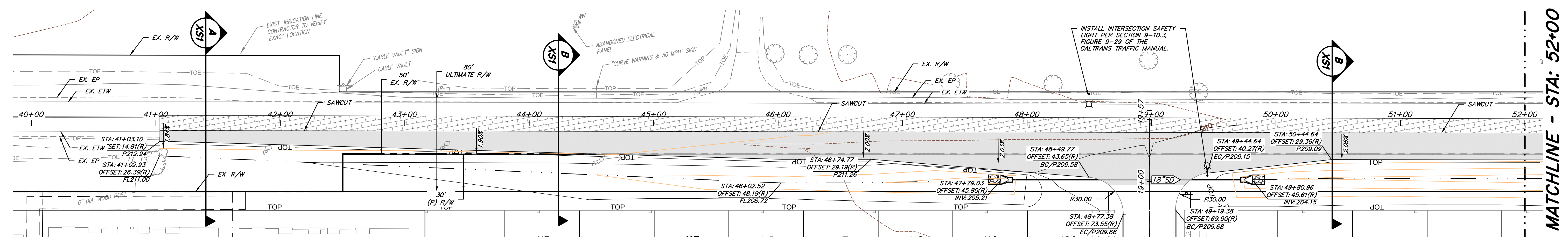

MVE Inc.
1117 L Street, Modesto, CA 95354 | 866.526.4214 | www.mve.net
Northern California | Southern California | Nevada

STATE OF CALIFORNIA DEPARTMENT OF TRANSPORTATION
STATE HIGHWAY 16 IMPROVEMENTS
TOPOGRAPHY SURVEY AND DEMOLITION PLAN
YOLO COUNTY CALIFORNIA

DWG. **TO2**
SHEET **5** OF **8**

REVIEW PURPOSES ONLY - NOT FOR CONSTRUCTION

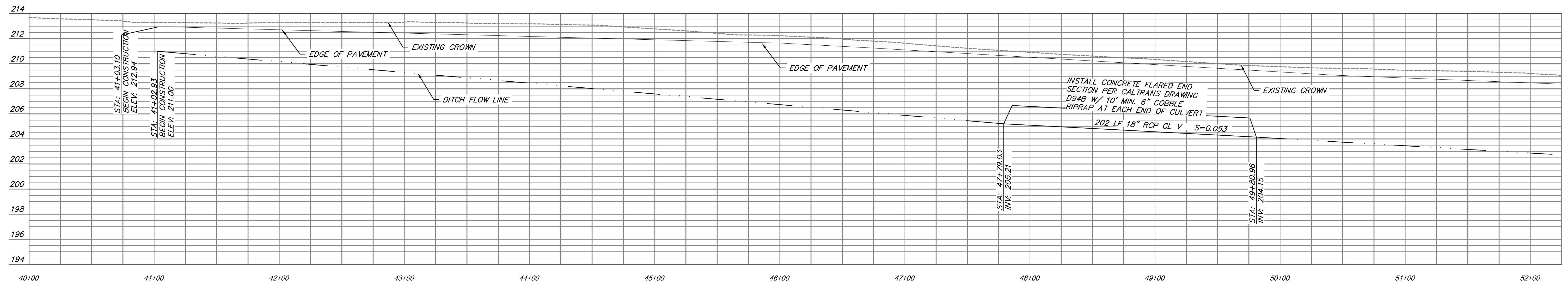
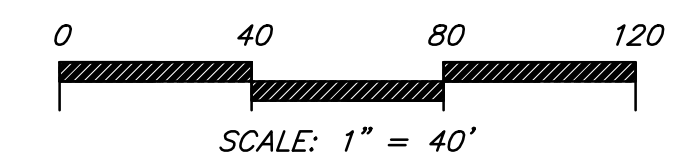
DIST	COUNTY	ROUTE	POST MILE	SHEET NO.	TOTAL SHEETS
3	YOLO	16	27.00/34.25	6	8



STATE HIGHWAY ROUTE 16

SCALE: 1" = 40'

COWELL DRIVE
FOR CONTINUATION SEE
IN-TRACT PLANS BY MVE



STATE HIGHWAY ROUTE 16 PROFILE

SCALE: 1" = 40' H
1" = 4' V

GENERAL NOTES

1. THE PROPOSED STRIPING IS NOT SHOWN ON THESE SHEETS FOR CLARITY PURPOSES - SEE STRIPING SHEETS FOR PROPOSED STRIPING.
2. CULVERT SHALL BE 18 INCH RCP CLASS III

LEGEND

- NEW PAVEMENTY - SEE SHEET XS1 FOR STRUCTURAL SECTION
- PAVEMENT GRIND AND OVERLAY - 0.15' TO PROVIDE UNIFORM PAVEMENT FOR PAVEMENT MARKINGS



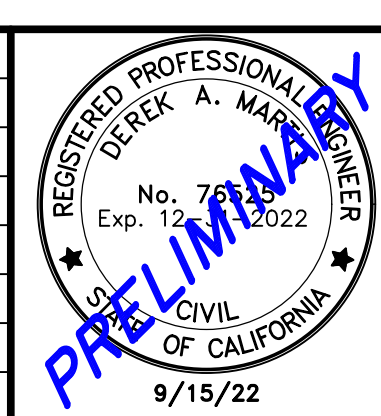
PRIOR TO CONSTRUCTION THE CONTRACTOR SHALL CALL UNDERGROUND SERVICE ALERT FOR UNDERGROUND CLEARANCE. USA WILL PROVIDE INFORMATION ABOUT OR LOCATE AND MARK UNDERGROUND FACILITIES.

UNAUTHORIZED CHANGES & USES

THE ENGINEER PREPARING THESE PLANS WILL NOT BE RESPONSIBLE FOR, OR LIABLE FOR, UNAUTHORIZED CHANGES TO OR USES OF THESE PLANS. ALL CHANGES TO THE PLANS MUST BE IN WRITING AND MUST BE APPROVED BY THE PREPARER OF THESE PLANS.

Drawn By: RG/JSH
Issue Date: 9/15/22
Job No.: NC07254E
Checked: DAM
Design By: RG/JSH

REVISIONS				
NO.	DATE	ISSUED FOR	BY	



MVE Inc.
1117 L Street, Modesto, CA 95354 | 866.526.4214 | www.mve.net
Northern California | Southern California | Nevada

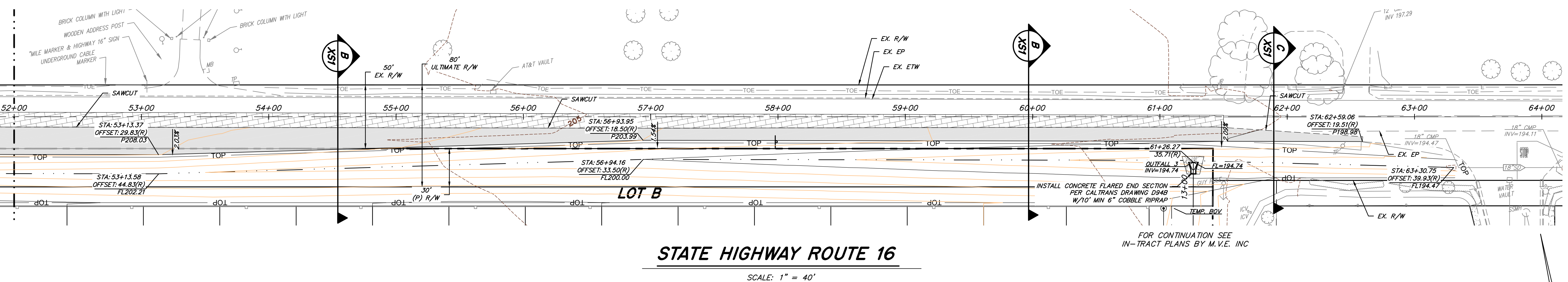
STATE OF CALIFORNIA DEPARTMENT OF TRANSPORTATION
STATE HIGHWAY 16 IMPROVEMENTS
PLAN AND PROFILE
STA 40+00.00 TO STA 52+00.00
YOLO COUNTY CALIFORNIA

DWG. **PP1**
SHEET **6**
OF **8**

REVIEW PURPOSES ONLY - NOT FOR CONSTRUCTION

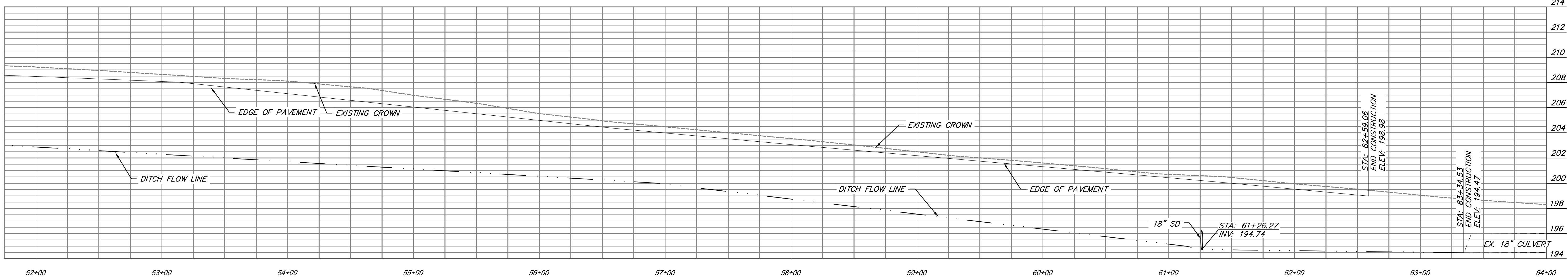
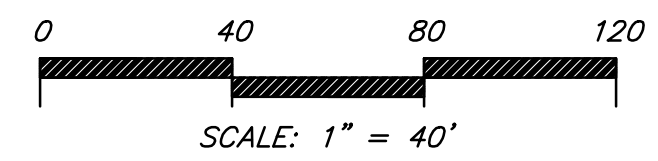
DIST	COUNTY	ROUTE	POST MILE	SHEET NO.	TOTAL SHEETS
3	YOLO	16	27.00/34.25	7	8

MATCHLINE - STA: 52+00



STATE HIGHWAY ROUTE 16

SCALE: 1" = 40'



STATE HIGHWAY ROUTE 16 PROFILE

SCALE: 1" = 40' H
1" = 4' V

GENERAL NOTES

1. THE PROPOSED STRIPING IS NOT SHOWN ON THESE SHEETS FOR CLARITY PURPOSES - SEE STRIPING SHEETS FOR PROPOSED STRIPING.
2. CULVERT SHALL BE 18 INCH RCP CLASS III.

LEGEND

- NEW PAVEMENTY - SEE SHEET CD1 FOR STRUCTURAL SECTION
- PAVEMENT GRIND AND OVERLAY - 2" TO PROVIDE UNIFORM PAVEMENT FOR PAVEMENT MARKINGS

811
Know what's below.
Call before you dig.

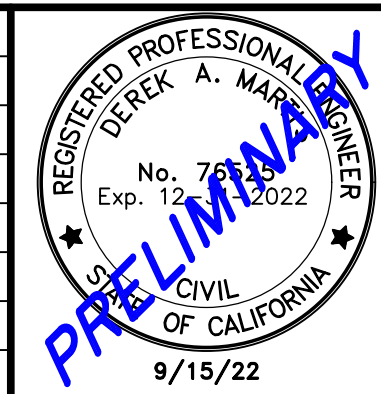
PRIOR TO CONSTRUCTION THE CONTRACTOR SHALL CALL UNDERGROUND SERVICE ALERT FOR UNDERGROUND CLEARANCE. USA WILL PROVIDE INFORMATION ABOUT OR LOCATE AND MARK UNDERGROUND FACILITIES.

UNAUTHORIZED CHANGES & USES

THE ENGINEER PREPARING THESE PLANS WILL NOT BE RESPONSIBLE FOR, OR LIABLE FOR, UNAUTHORIZED CHANGES TO OR USES OF THESE PLANS. ALL CHANGES TO THE PLANS MUST BE IN WRITING AND MUST BE APPROVED BY THE PREPARER OF THESE PLANS.

REVISIONS				
NO.	DATE	ISSUED FOR	BY	

Drawn By: RG/JSH
Issue Date: 9/15/22
Job No.: NC07254E
Checked: DAM
Design By: RG/JSH



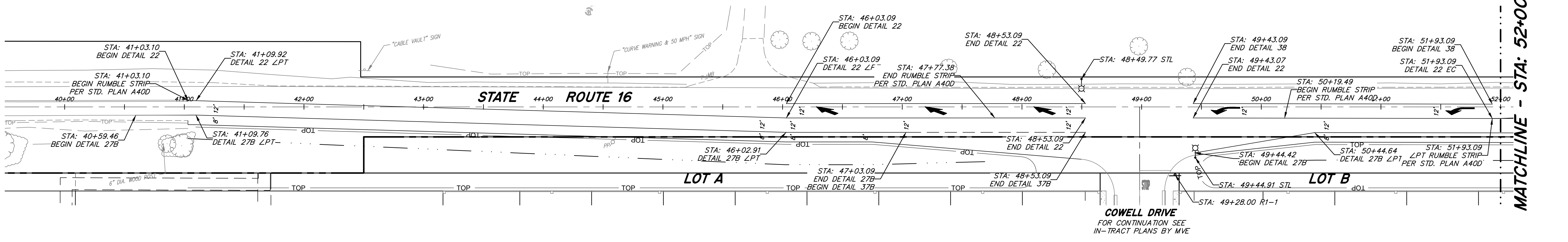
MVE Inc.
1117 L Street, Modesto, CA 95354 | 866.526.4214 | www.mve.net
Northern California | Southern California | Nevada

STATE OF CALIFORNIA DEPARTMENT OF TRANSPORTATION
STATE HIGHWAY 16 IMPROVEMENTS
PLAN AND PROFILE
STA 52+00.00 TO STA 64+00.00
YOLO COUNTY CALIFORNIA

DWG. **PP2**
SHEET **7**
OF **8**

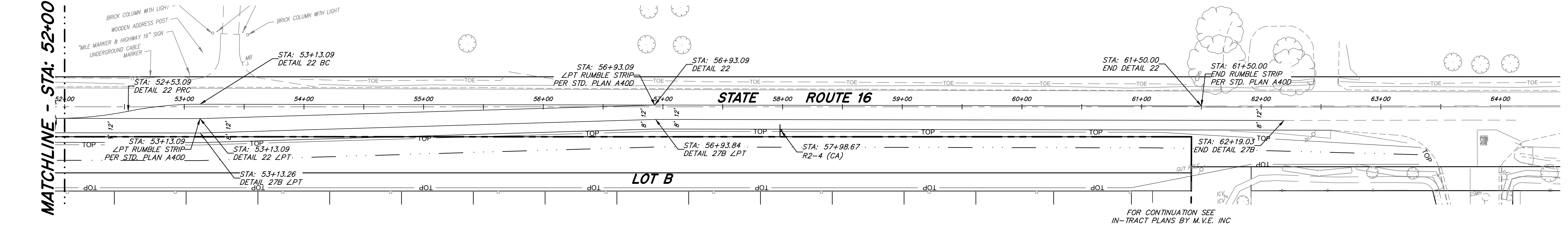
REVIEW PURPOSES ONLY - NOT FOR CONSTRUCTION

DIST	COUNTY	ROUTE	POST MILE	SHEET NO.	TOTAL SHEETS
3	YOLO	16	27.00/34.25	8	8



MATCHLINE - STA: 52+00

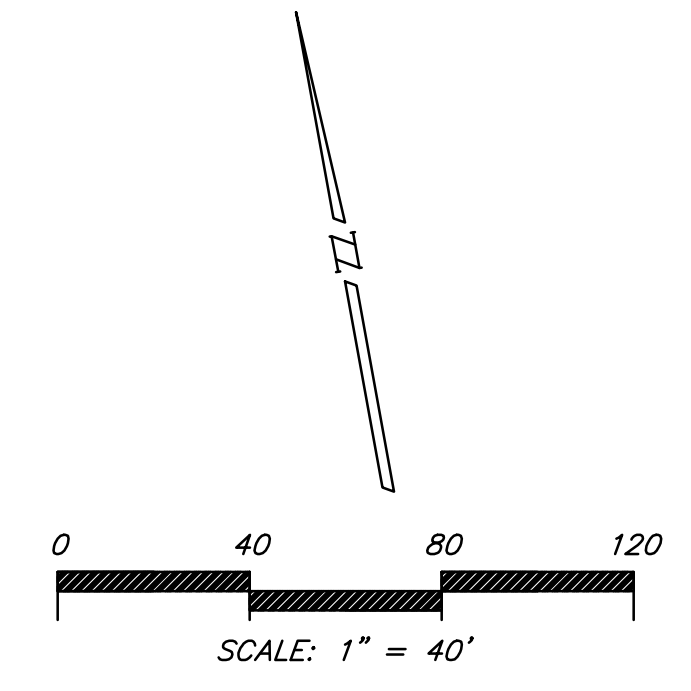
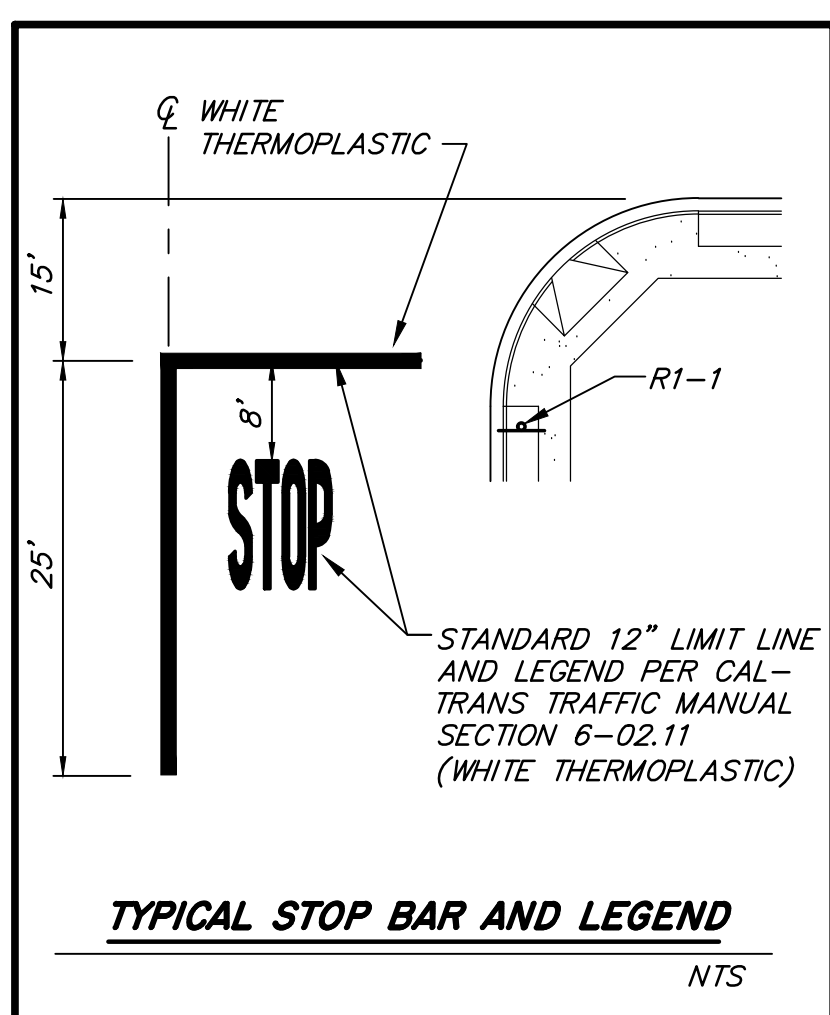
MATCHLINE - STA: 52+00



FOR CONTINUATION SEE IN-TRACT PLANS BY M.V.E. INC

LEGEND

- R1-1 TRAFFIC SIGN WITH CAL-TRANS DESIGNATION
- STOP BAR AND LEGEND - SEE DETAIL ON THIS SHEET
- CALTRANS TYPE III (L) ARROW-PLAN A24A
- CALTRANS TYPE VI LANE DROP ARROW-PLAN A24A
- STOP BAR AND LEGEND
- EXISTING ELECTROLIER
- PROP. ELECTROLIER PER CO. STD'S



REVIEW PURPOSES ONLY - NOT FOR CONSTRUCTION

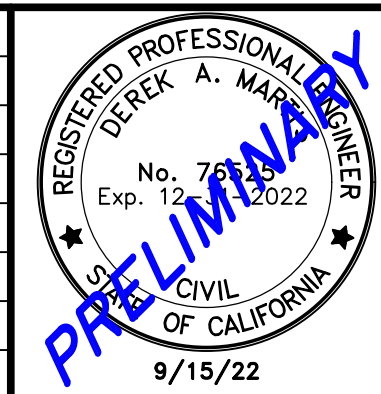
811
Know what's below.
Call before you dig.

PRIOR TO CONSTRUCTION THE CONTRACTOR SHALL CALL UNDERGROUND SERVICE ALERT FOR UNDERGROUND CLEARANCE. USA WILL PROVIDE INFORMATION ABOUT OR LOCATE AND MARK UNDERGROUND FACILITIES.

UNAUTHORIZED CHANGES & USES

THE ENGINEER PREPARING THESE PLANS WILL NOT BE RESPONSIBLE FOR, OR LIABLE FOR, UNAUTHORIZED CHANGES TO OR USES OF THESE PLANS. ALL CHANGES TO THE PLANS MUST BE IN WRITING AND MUST BE APPROVED BY THE PREPARER OF THESE PLANS.

Drawn By: RG/JSH	REVISIONS			
Issue Date: 9/15/22	NO.	DATE	ISSUED FOR	BY
Job No.: NC07254E				
Checked: DAM				
Design By: RG/JSH				



MVE Inc.

1117 L Street, Modesto, CA 95354 | 866.526.4214 | www.mve.net
Northern California | Southern California | Nevada

STATE OF CALIFORNIA DEPARTMENT OF TRANSPORTATION

STATE HIGHWAY 16 IMPROVEMENTS

PAVEMENT DELINEATION, SIGN AND STREET LIGHT PLAN

YOLO COUNTY CALIFORNIA

DWG. PD1

SHEET 8 OF 8