

END-CAP RETAIL/MEDICAL OFFICE SPACE

AVAILABLE FOR LEASE

2038 Smith Twp. Rd, Burgettstown, PA



PROPERTY INFORMATION:

- ±2,000 SF Endcap Space Available – Ideal for medical office or retail use
- Excellent visibility and storefront exposure in a busy neighborhood plaza
- Located next to a high-performing pizza shop with strong foot traffic
- Endcap positioning allows for abundant natural light and multiple points of entry
- Ample on-site parking for staff and customers
- Flexible layout to accommodate a range of medical or retail build-outs
- Strong demographics and daily traffic counts in surrounding area
- Perfect opportunity to join a thriving tenant mix in an established location

Jessica Jarosz
jjarosz@century-realty.com
412.235.7233

John Aderholt, Broker
jdaderholt@centuryequities.com
304.232.5411

Century-realty.com

6000 Town Center Boulevard, Suite 230, Canonsburg, PA 15317 | Century Centre, 1233 Main Street, Suite 1500, Wheeling, WV 26003



END-CAP RETAIL/MEDICAL OFFICE SPACE

AVAILABLE FOR LEASE

2038 Smith Twp. Rd, Burgettstown, PA



Jessica Jarosz
jjarosz@century-realty.com
412.235.7233

John Aderholt, Broker
jdaderholt@centuryequities.com
304.232.5411

Century-realty.com

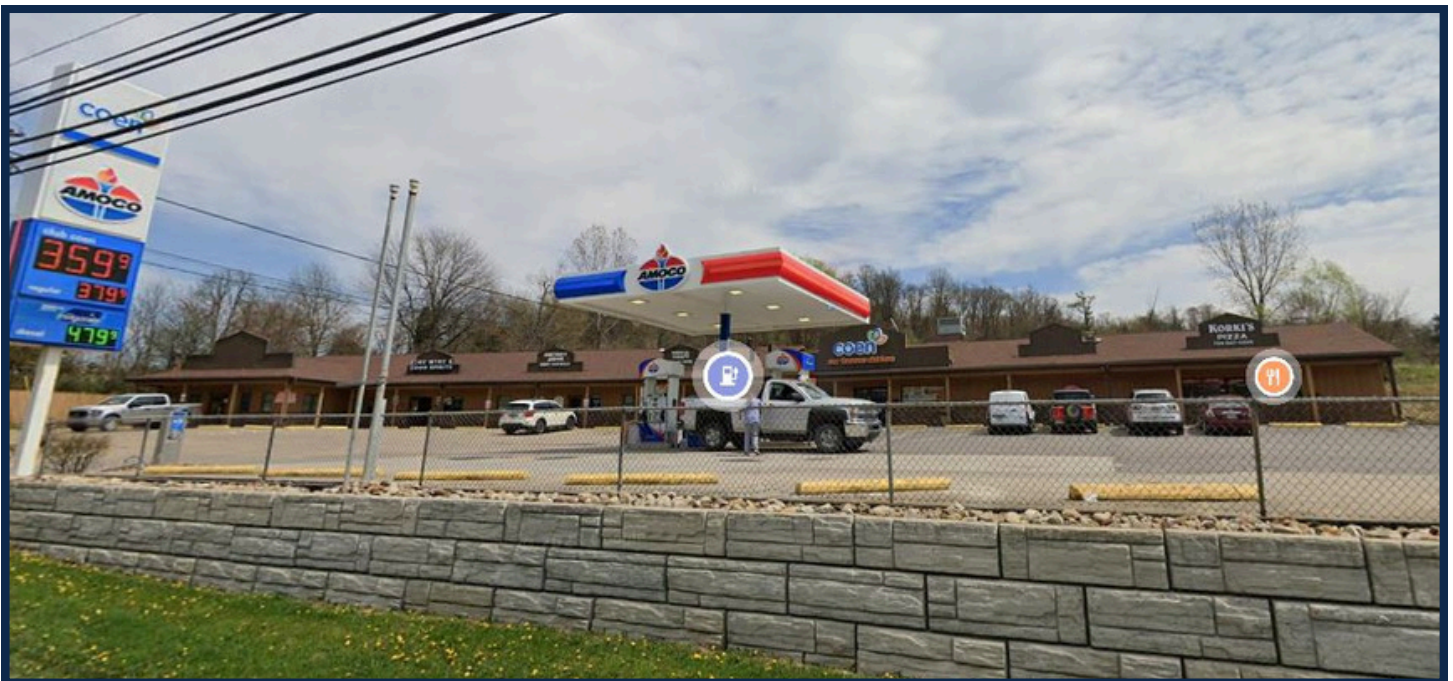
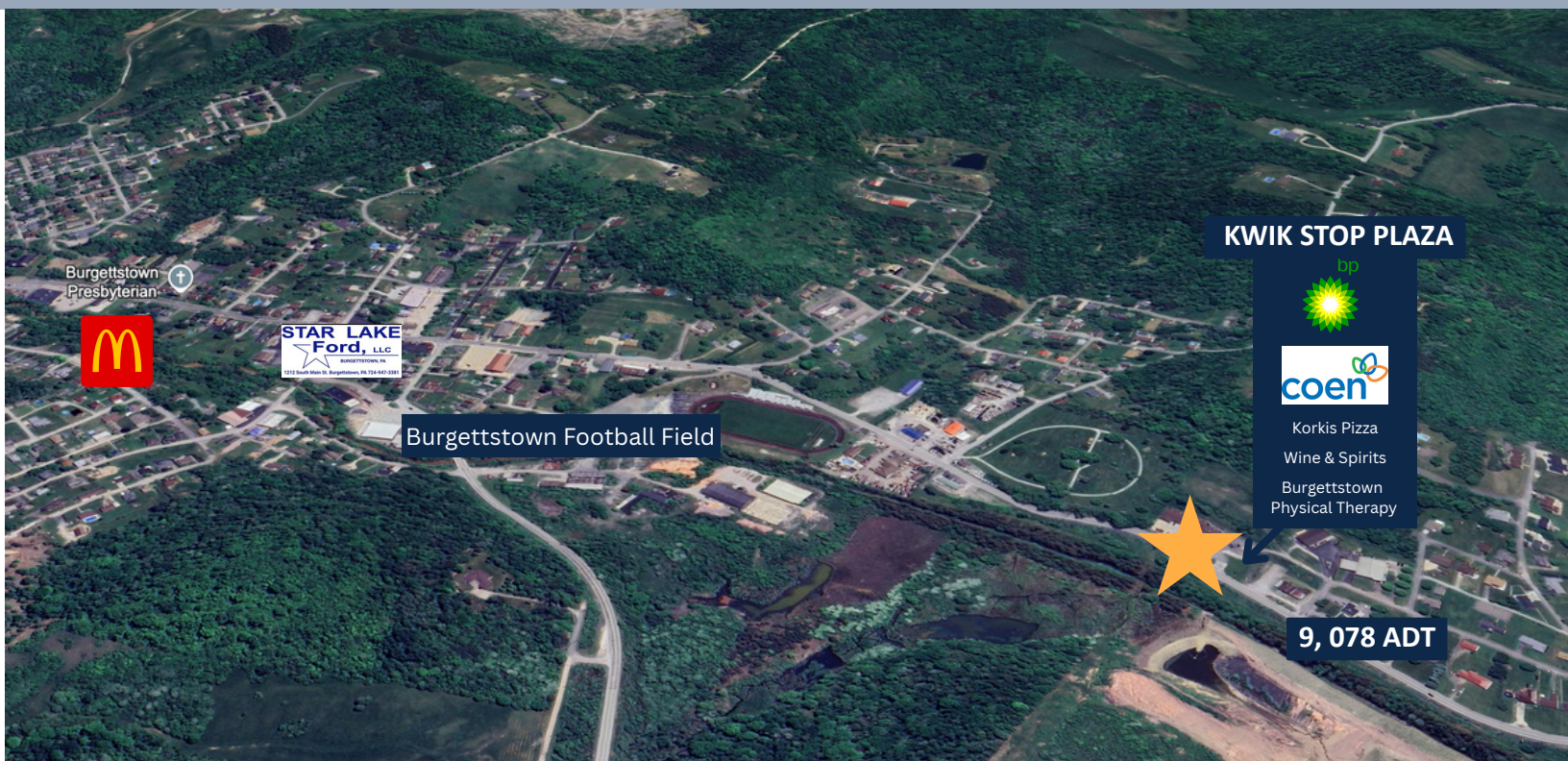
6000 Town Center Boulevard, Suite 230, Canonsburg, PA 15317 | Century Centre, 1233 Main Street, Suite 1500, Wheeling, WV 26003



END-CAP RETAIL/MEDICAL OFFICE SPACE

AVAILABLE FOR LEASE

2038 Smith Twp. Rd, Burgettstown, PA



Jessica Jarosz

jjaros@century-realty.com

412.235.7233

John Aderholt, Broker

jdaderholt@centuryequities.com

304.232.5411

Century-realty.com

6000 Town Center Boulevard, Suite 230, Canonsburg, PA 15317 | Century Centre, 1233 Main Street, Suite 1500, Wheeling, WV 26003

