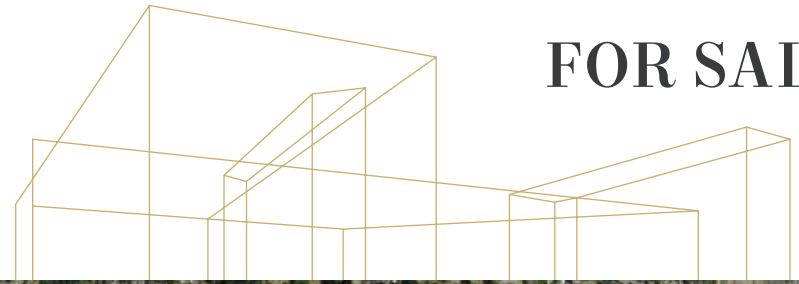




Merz Land

7919 176TH ST E, PUYALLUP, WA

FOR SALE



**Kidder
Mathews**

JEROME O'LEARY

253.779.9292

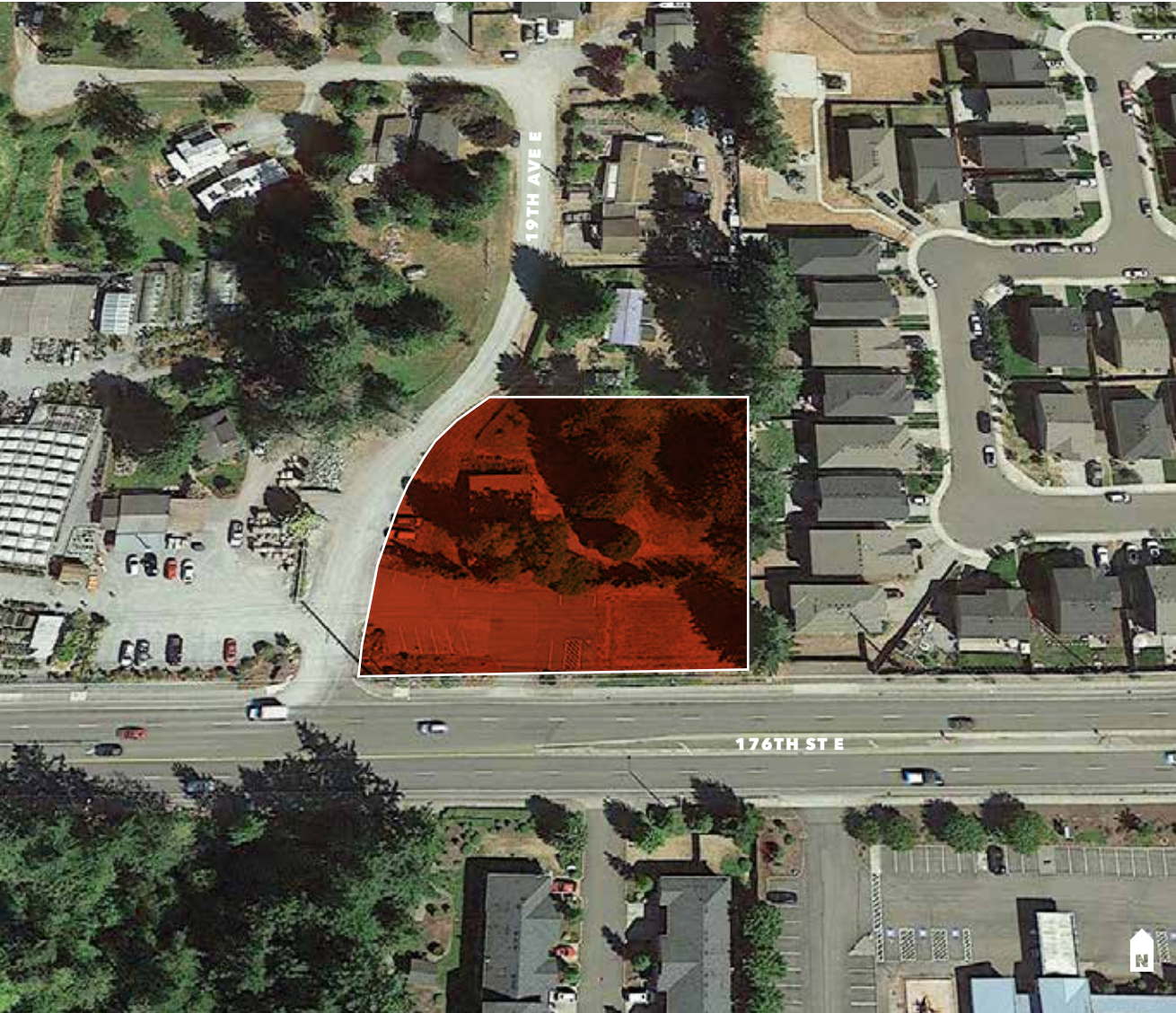
jerome.oleary@kidder.com

This information supplied herein is from sources we deem reliable. It is provided without any representation, warranty, or guarantee, expressed or implied as to its accuracy. Prospective Buyer or Tenant should conduct an independent investigation and verification of all matters deemed to be material, including, but not limited to, statements of income and expenses. Consult your attorney, accountant, or other professional advisor.

FOR SALE

Merz Land

7919 176TH ST E, PUYALLUP, WA



Prime Puyallup Land

LIST PRICE \$675,000

±1.04 ACRES available

±250 FT of frontage on 176th

ZONING Neighborhood Corridor, Frederickson Community Plan

USES ALLOWED multifamily, retail and various commercial

A COMMUNITY well is on the site requiring a set-back area

TRAFFIC COUNTS 24,254 CPD on 176th St E (2020)

DEMOGRAPHICS

	1 Mile	3 Miles	5 Miles
Population	13,648	44,143	81,927
Median HH Income	\$86,155	\$90,262	\$94,248
Employment	168	797	1,544

JEROME O'LEARY

253.779.9292

jerome.oleary@kidder.com

KIDDER.COM

This information supplied herein is from sources we deem reliable. It is provided without any representation, warranty, or guarantee, expressed or implied as to its accuracy. Prospective Buyer or Tenant should conduct an independent investigation and verification of all matters deemed to be material, including, but not limited to, statements of income and expenses. Consult your attorney, accountant, or other professional advisor.

km Kidder Mathews

FOR SALE

Merz Land

7919 176TH ST E, PUYALLUP, WA

CENTERS AND CORRIDORS - URBAN ZONE CLASSIFICATIONS

	Employment Corridor ECOR	Neighborhood Corridor NCOR	Towne Center TCTR	Urban Corridor UCOR
RESIDENTIAL USE				
Group Home		C		C
Mobile Home				
Mobile Home Park				
Multi-Family Housing		P	P	P
Residential Care Facilities		P	P	P
Senior Housing		P	P	P
Single-Family Detached Housing	P			
Two-Family Housing (Duplex)	P			
CIVIC USE				
Administrative Government Services	P	P	P	P
Community and Cultural Services		P2;C1,3	P1-5	P1-5
Day-Care Centers	P	P	P	P
Education	P4,5	P1,2	P1-3;A4,5	P
Health Services	P1,2	P1	P1,2	P1,2
Postal Services	P2	P1	P1	P
Public Park Facilities	P4	P1,2,4	P1,2,4	P
Public Safety Services	P1;C2,3	P1	P1	P1,2
Religious Assembly		P1,2;C3	P1,2	P
Transportation	P1,2;C3	P1	P1,2	P1-3
UTILITIES USE				
Electrical Facilities	P	P	P	P
Electrical Generation Facilities	C			
Natural Gas Facilities	P	P1,2;C3	P1,2,5;C3	P1;C3
Organic Waste Processing Facilities	C			

	Employment Corridor ECOR	Neighborhood Corridor NCOR	Towne Center TCTR	Urban Corridor UCOR
UTILITIES USE				
Pipelines	P	P	P	P
Sewage Collection Facilities	P	P	P	P
Sewage Treatment Facilities	C	C	C	C
Surface Water Management Activities	P	P	P	P
Telecommunication Towers or Wireless Facilities	P1;PL2,3;C4	P1;C2	P1;C2	P1;PL2;C3
Utility or Public Maintenance Facilities	P	P1;C2	P1;C2	P1;C2
Waste Disposal Facilities				
Waste Transfer Facilities	P1,2,4	P1;C2	P1;C2	P1,2
Water Supply Facilities	P1;A2;C3	P1;A2;C3	P1;A2;C3	P1;A2;C3
OFFICE/BUSINESS				
Administrative and Professional Offices	P	P	P	P
RESOURCE USE				
Agritourism	P1			
Agricultural Services	P			
Agricultural Supply Sales	P			P
Animal Production, Boarding, and Slaughter	P1			P1
Crop Production	P			
Fish Processing, Hatcheries, and Aquaculture	C			
Forestry	P2			
Surface Mines				
Telecommunication Towers or Wireless Facilities	P1;PL2,3;C4	P1;C2	P1;C2	P1;PL2;C3

KIDDER.COM

This information supplied herein is from sources we deem reliable. It is provided without any representation, warranty, or guarantee, expressed or implied as to its accuracy. Prospective Buyer or Tenant should conduct an independent investigation and verification of all matters deemed to be material, including, but not limited to, statements of income and expenses. Consult your attorney, accountant, or other professional advisor.



FOR SALE

Merz Land

7919 176TH ST E, PUYALLUP, WA

CENTERS AND CORRIDORS - URBAN ZONE CLASSIFICATIONS

	Employment Corridor ECOR	Neighborhood Corridor NCOR	Towne Center TCTR	Urban Corridor UCOR
COMMERCIAL USE				
Adult Business				
Amusement and Recreation	C3	P1;C6	P1-4	P1-5
Billboards				
Building Materials and Garden Supplies	P5-6	P1,2	P1-4	P
Business Services	P	P1	P1	P
Commercial Centers			P	P
Eating and Drinking Establishments	P	P1,3	P	P
Lodging			P2	P2,5
Mobile, Manufactured and Modular Home Sales	P			P
Motor Vehicles and Related Equipment Sales, Rental, Repair, and Service	P1, 2, 4-5	C2	P1	P1-4
Rental and Repair Services	P		P1	P
Sales of Merchandise and Services	P1	P1-3	P	P
Storage and Moving	C			P
Wholesale Trade	P		P1	P

INDUSTRIAL USE

Basic Manufacturing				
Contractor Yards	P			
Food and Related Products	P		P1	P1
Industrial Services and Repair	P			
Intermediate Manufacturing and Intermediate/Final Assembly	P			C1-3
Off-site Hazardous Waste Treatment and Storage Facilities	C			
Recycling Collection and Processing Facilities	C			
Salvage Yards/Vehicle Storage	C			
Warehousing, Distribution, and Freight Movement	P1-3			

OTHER URBAN ZONE CLASSIFICATIONS

MPC	Master Planned Community
EBPC	Employment Based Planned Community
AIR	Airport Overlay
MRO	Mineral Resource Overlay

NOTES

P	Permitted
C	Requires Conditional Use Permit
A	Requires Administrative Use Permit
PL	Priority Location Criteria
NUMBER	Refers to level of Use Type allowed. When no number is present, all levels of the Use Type are allowed.

KIDDER.COM

This information supplied herein is from sources we deem reliable. It is provided without any representation, warranty, or guarantee, expressed or implied as to its accuracy. Prospective Buyer or Tenant should conduct an independent investigation and verification of all matters deemed to be material, including, but not limited to, statements of income and expenses. Consult your attorney, accountant, or other professional advisor.

