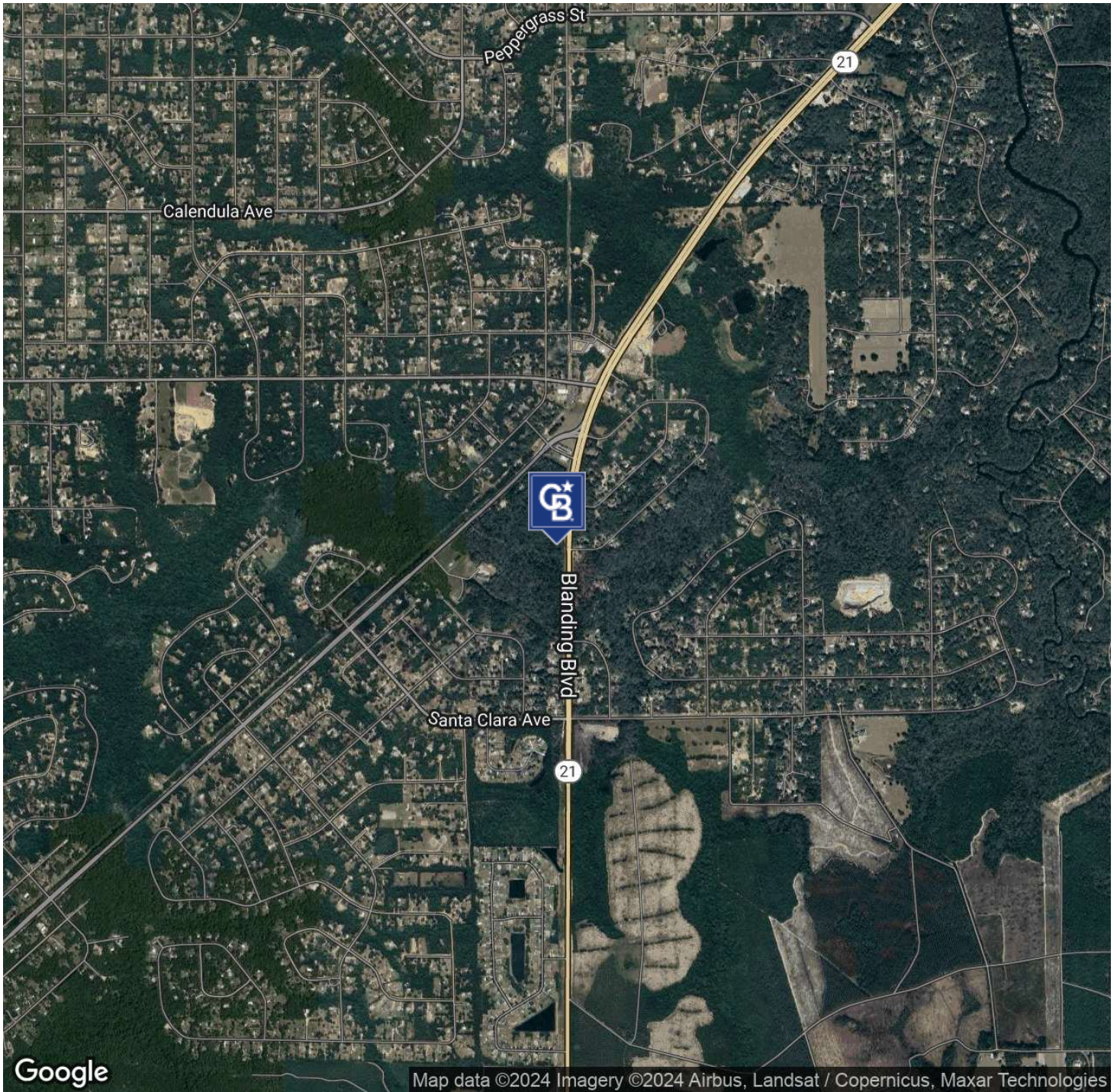




# SALE / LEASE

**BLANDING BLVD**

Middleburg, FL 32068



**Eric Maimo**  
904 537 6443  
EricCRE@EricMaimo.com

**Adam Lanteigne**  
602 702 4288  
adam@soldin904.com

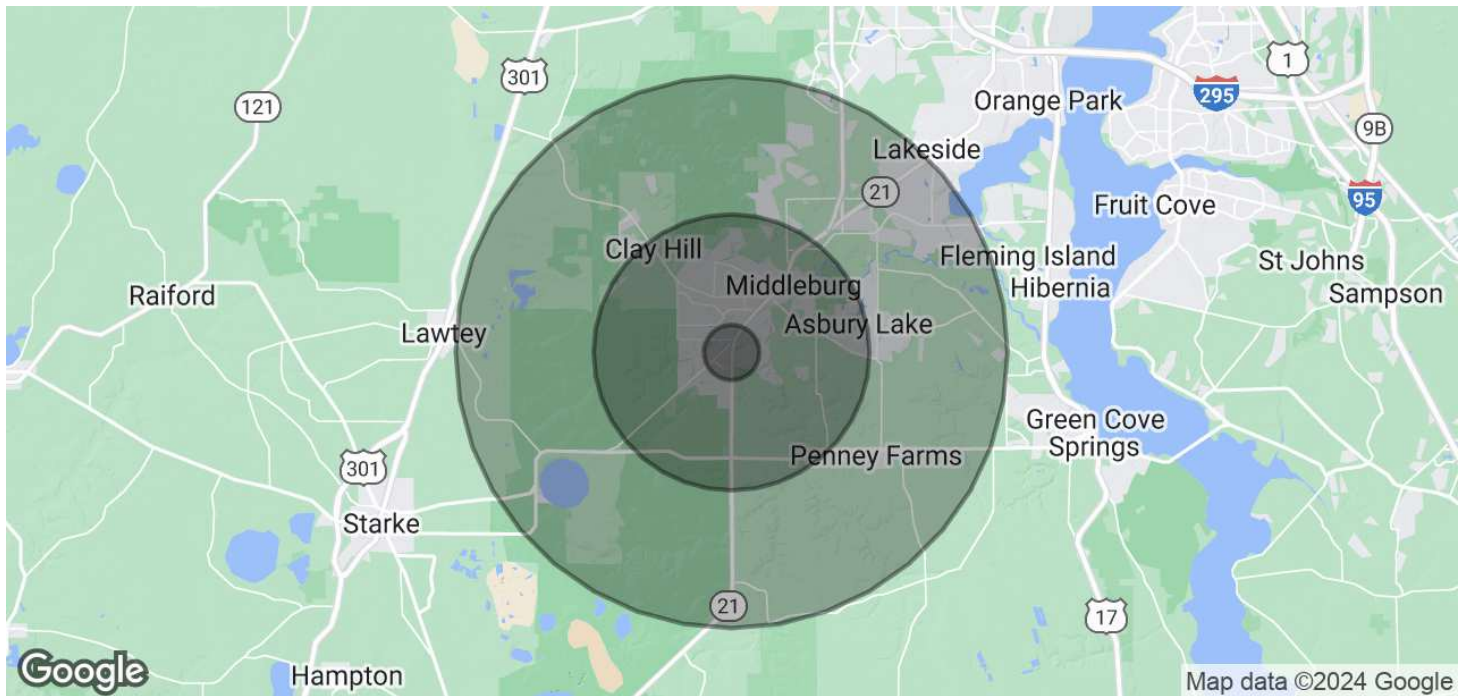


**COLDWELL BANKER  
COMMERCIAL**  
PREMIER PROPERTIES

# SALE / LEASE

**BLANDING BLVD**

Middleburg, FL 32068



<b>POPULATION</b>	<b>1 MILE</b>	<b>5 MILES</b>	<b>10 MILES</b>
Total Population	1,961	42,910	177,212
Average Age	34.6	41	39.2
Average Age (Male)	32.9	40.9	37.6
Average Age (Female)	41.4	41.7	40.5

<b>HOUSEHOLDS &amp; INCOME</b>	<b>1 MILE</b>	<b>5 MILES</b>	<b>10 MILES</b>
Total Households	758	17,003	64,572
# of Persons per HH	2.6	2.5	2.7
Average HH Income	\$71,003	\$73,910	\$84,113
Average House Value	\$181,277	\$176,470	\$202,261

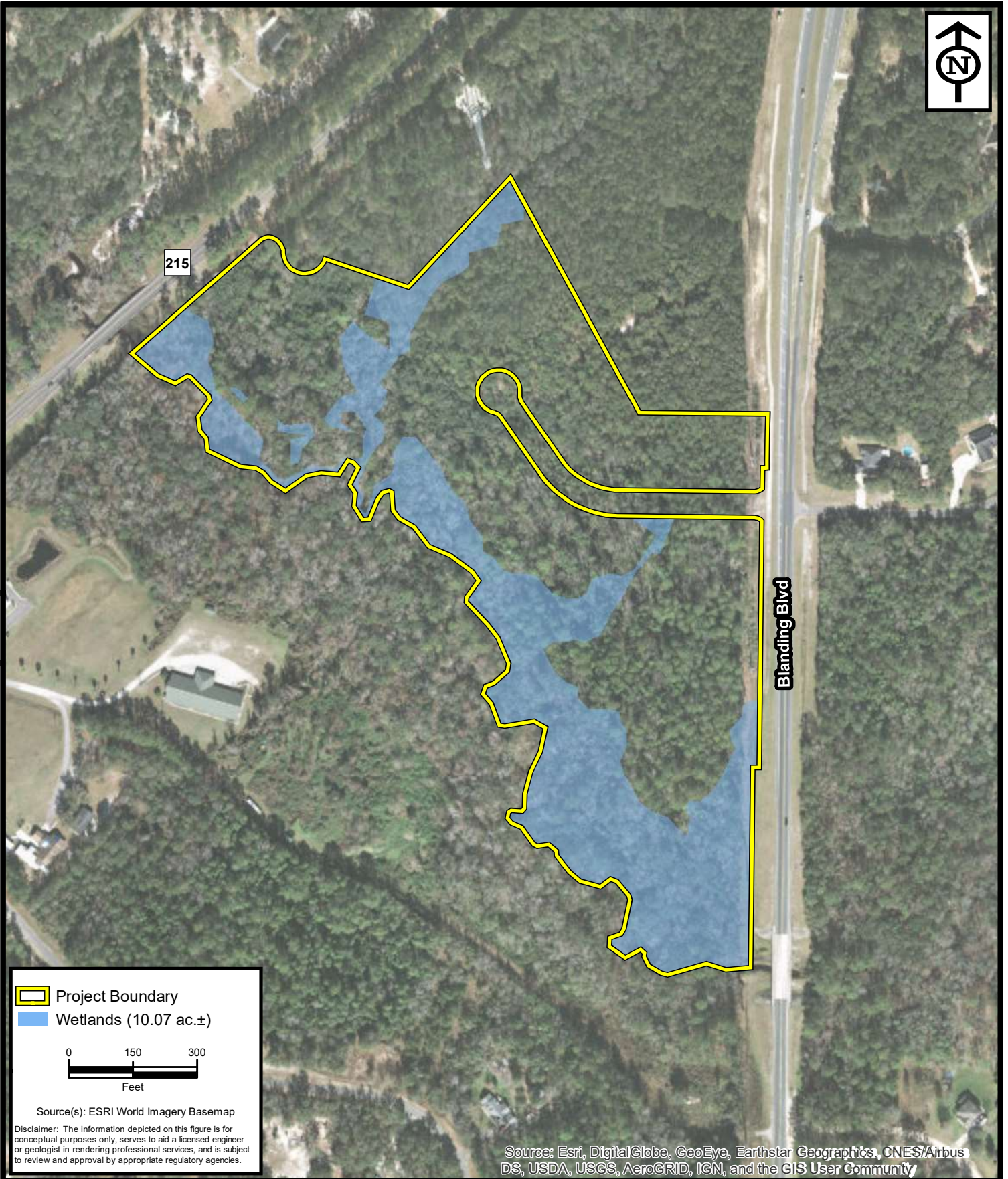
2020 American Community Survey (ACS)


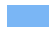
**Eric Maimo**  
904 537 6443  
EricCRE@EricMaimo.com

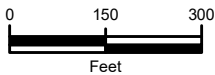
**Adam Lanteigne**  
602 702 4288  
adam@soldin904.com



**COLDWELL BANKER**  
**COMMERCIAL**  
PREMIER PROPERTIES



-  Project Boundary
-  Wetlands (10.07 ac.±)



Source(s): ESRI World Imagery Basemap

Disclaimer: The information depicted on this figure is for conceptual purposes only, serves to aid a licensed engineer or geologist in rendering professional services, and is subject to review and approval by appropriate regulatory agencies.

Source: Esri, DigitalGlobe, GeoEye, Earthstar Geographics, CNES/Airbus DS, USDA, USGS, AeroGRID, IGN, and the GIS User Community



**ENVIRONMENTAL SERVICES, INC.**

7220 Financial Way, Suite 100  
Jacksonville, Florida 32256  
(904) 470-2200  
(904) 470-2112 Fax

[www.environmentalservicesinc.com](http://www.environmentalservicesinc.com)

Wetlands  
**Brown - Black Creek JD**  
Clay County, Florida

Project:	EJ18207.00
Date:	Aug 2018
Drawn By:	AA
Checked By:	JRN
Approved By:	BAA
Figure:	3