

FOR SALE

630 NW 14TH AVE

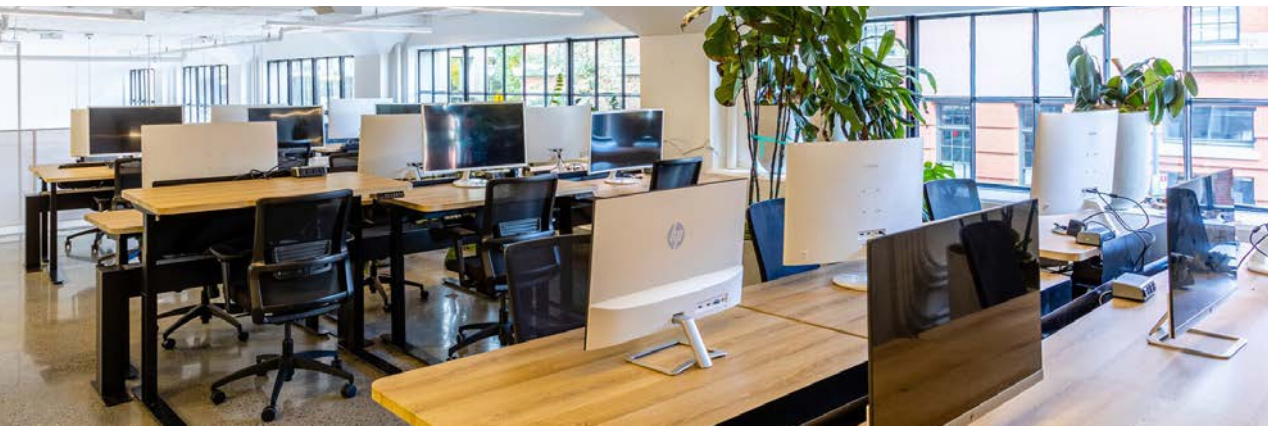
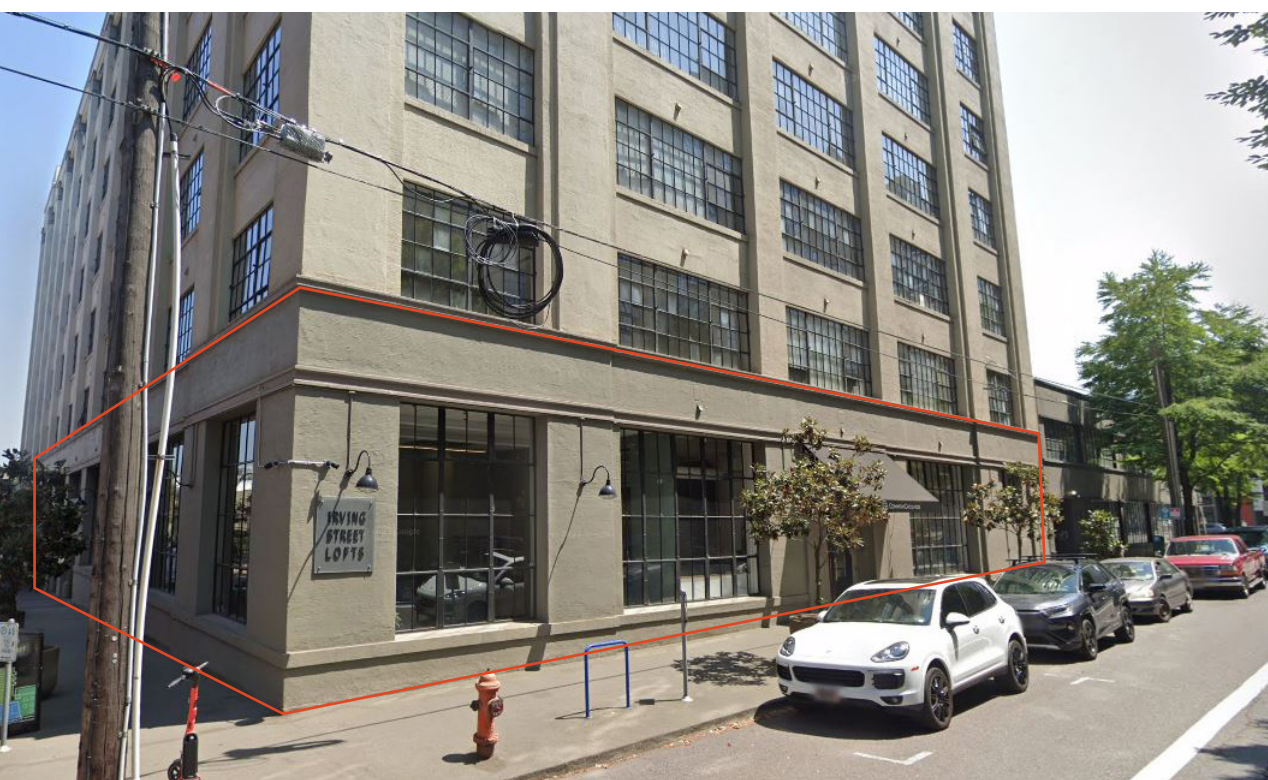
PORTLAND, OR

*Newly renovated Owner-User
property located on a prime
corner in the Pearl District*

1314

KIDDER.COM

km Kidder
Mathews



Contemporary office space walking distance to countless amenities and attractions. This 14,239 SF property includes the first and mezzanine levels of the building.

ADDRESS	630 NW 14th Ave, Portland, OR
TOTAL BUILDING SF	14,239
TOTAL OFFICE SF	13,033
ZONING	EX
YEAR BUILT	1925, renovated 2020
PROPERTY TYPE	First floor condo
SALE PRICE	\$4,500,000
CAP RATE	8.0%

13K SF
OFFICE SIZE

\$4.5M
SALE PRICE

FIRST FLOOR PLAN



14,239 SF

TOTAL BUILDING SIZE

13,033 SF

OFFICE SIZE

SECOND FLOOR PLAN





CONVENIENT
LOCATION
NEAR MAJOR
THOROUGHFARES



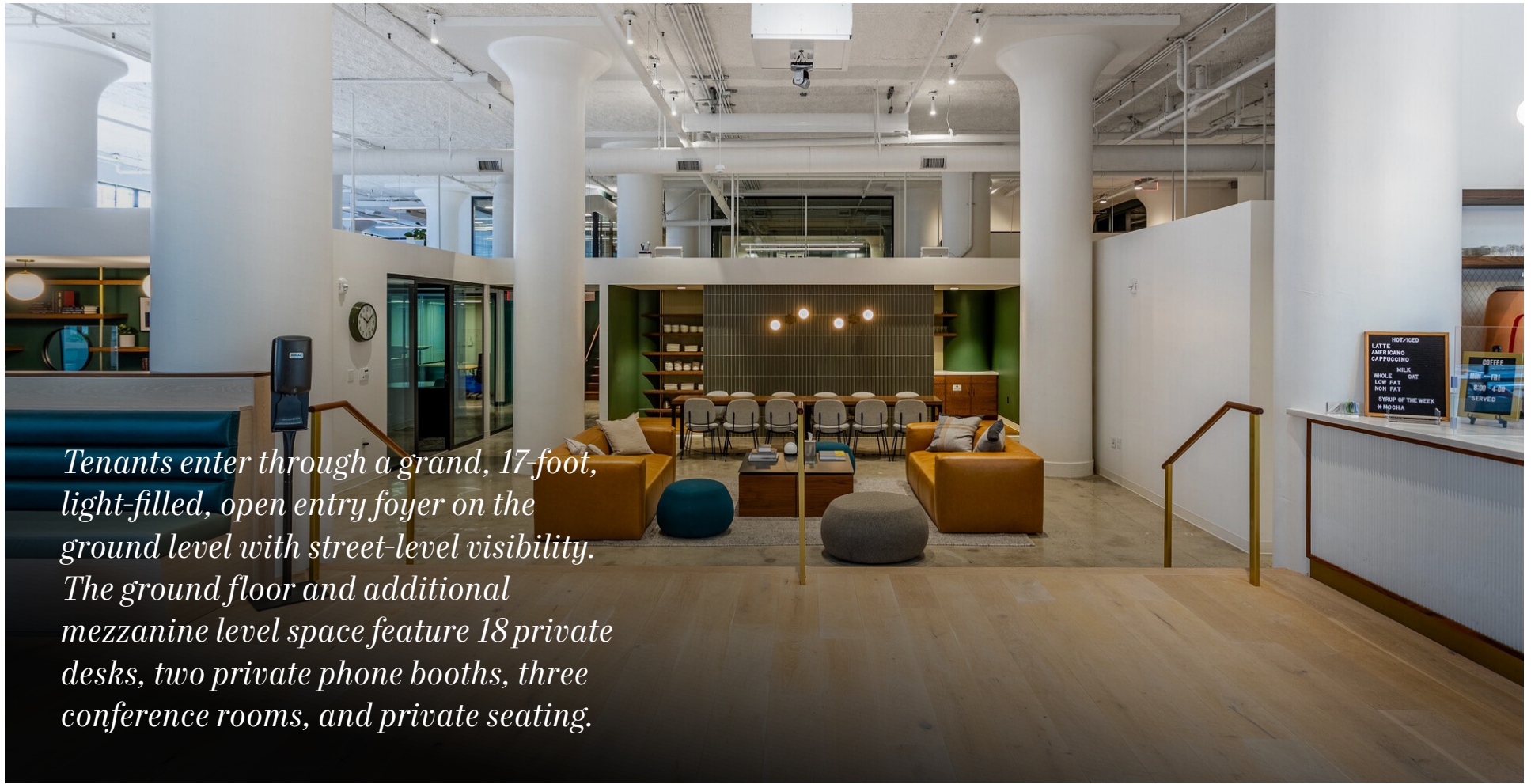
LOCATED IN
FASHIONABLE
AND LIVELY
PEARL DISTRICT



EASY ACCESS
TO PUBLIC
TRANSPORTATION

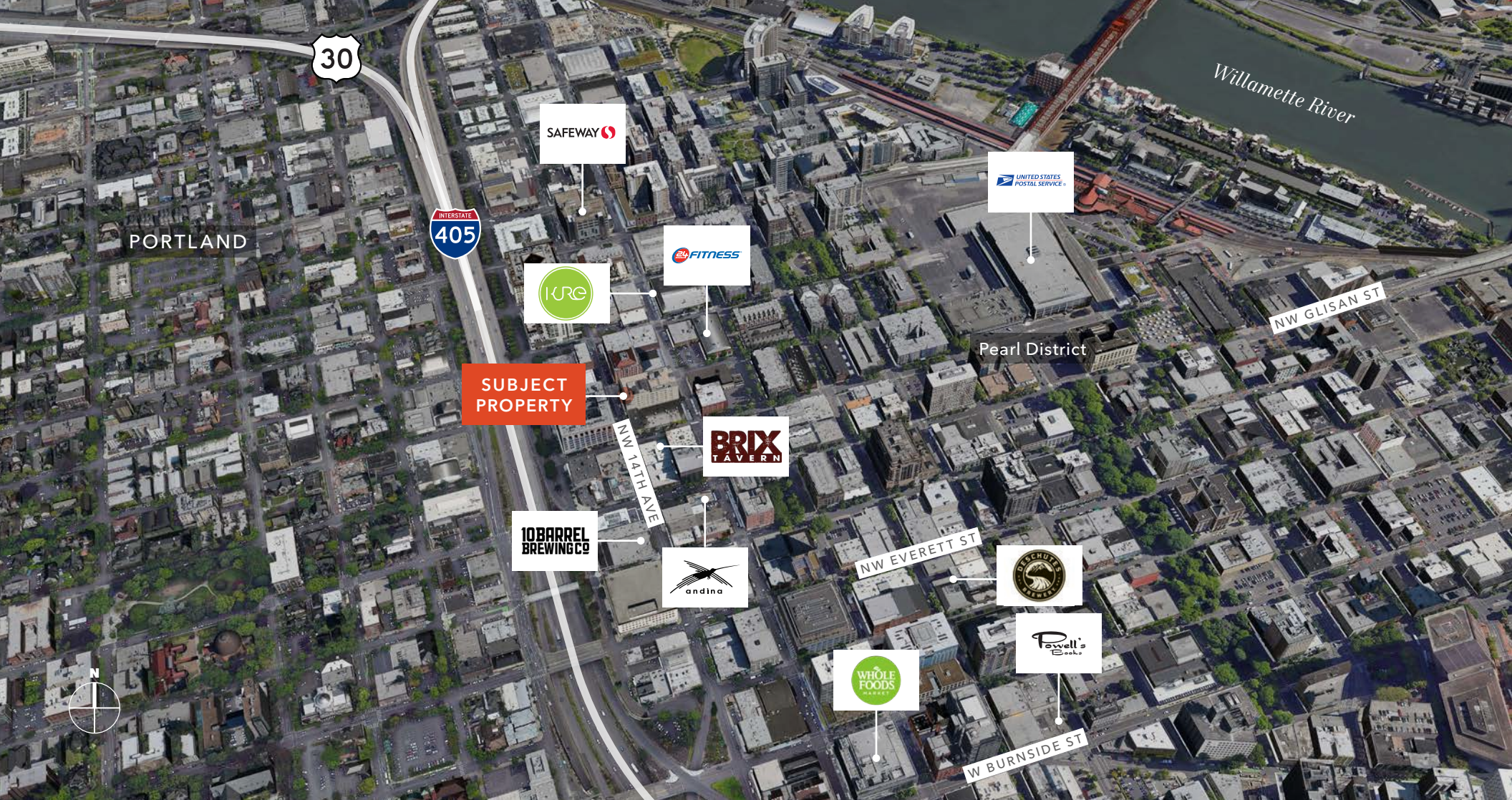


BEAUTIFULLY
RENOVATED
INTERIORS



Tenants enter through a grand, 17-foot, light-filled, open entry foyer on the ground level with street-level visibility. The ground floor and additional mezzanine level space feature 18 private desks, two private phone booths, three conference rooms, and private seating.





630 NW 14TH AVE

*For more information on
this property, please contact*

JAKE HAAS
503.721.2728
jake.haas@kiddr.com KIDDER.COM

This information supplied herein is from sources we deem reliable. It is provided without any representation, warranty, or guarantee, expressed or implied as to its accuracy. Prospective Buyer or Tenant should conduct an independent investigation and verification of all matters deemed to be material, including, but not limited to, statements of income and expenses. Consult your attorney, accountant, or other professional advisor.

