

LEWIS TECHNOLOGY CENTRE

39575 and 39625 Lewis Drive, Novi, MI 48377

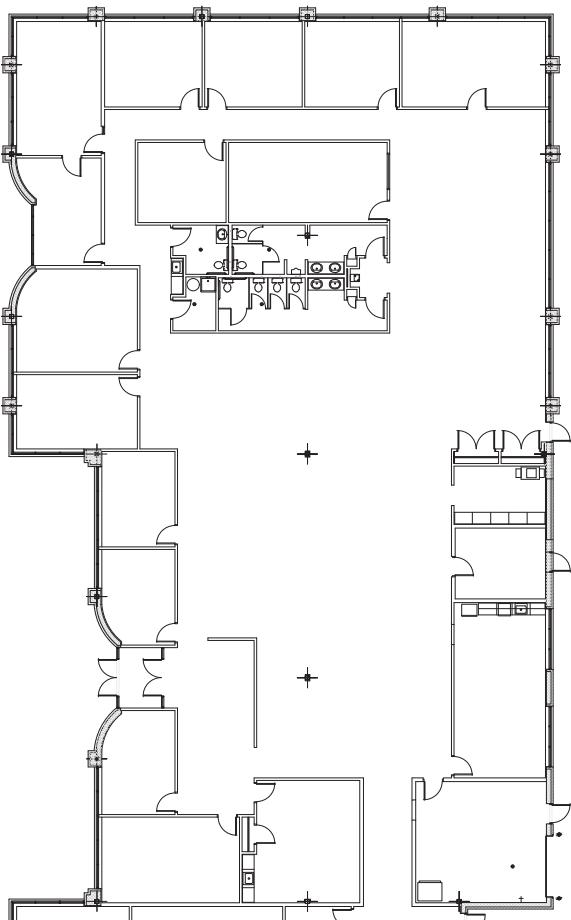
BROKER BONUS
\$2.00/SF



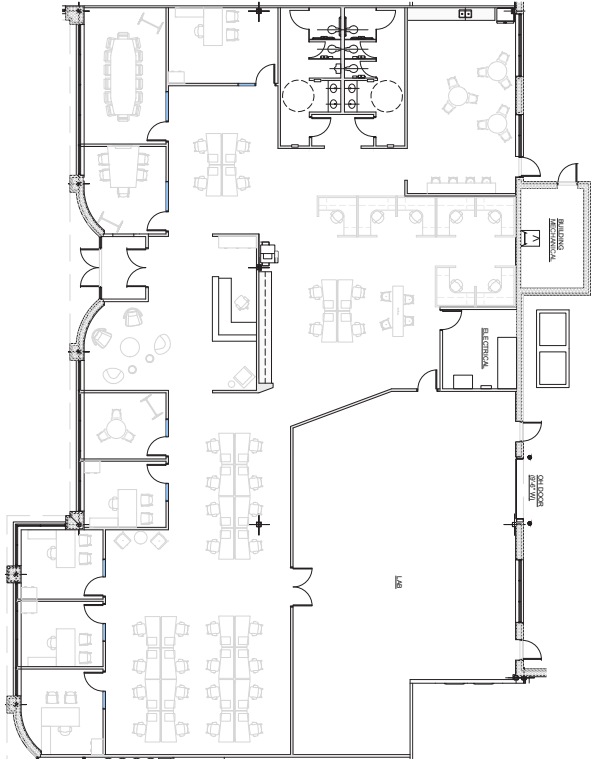
NEWMARK

LEWIS TECHNOLOGY CENTRE

FLOORPLANS



SUITE 200 39625 LEWIS DR
12,047 SF



(SAMPLE FLOOR PLAN)

SUITE 500 39575 LEWIS DR
8,732 SF



LEWIS TECHNOLOGY CENTRE

39575 and 39625 Lewis Drive, Novi, MI 48377

HIGHLIGHTS:

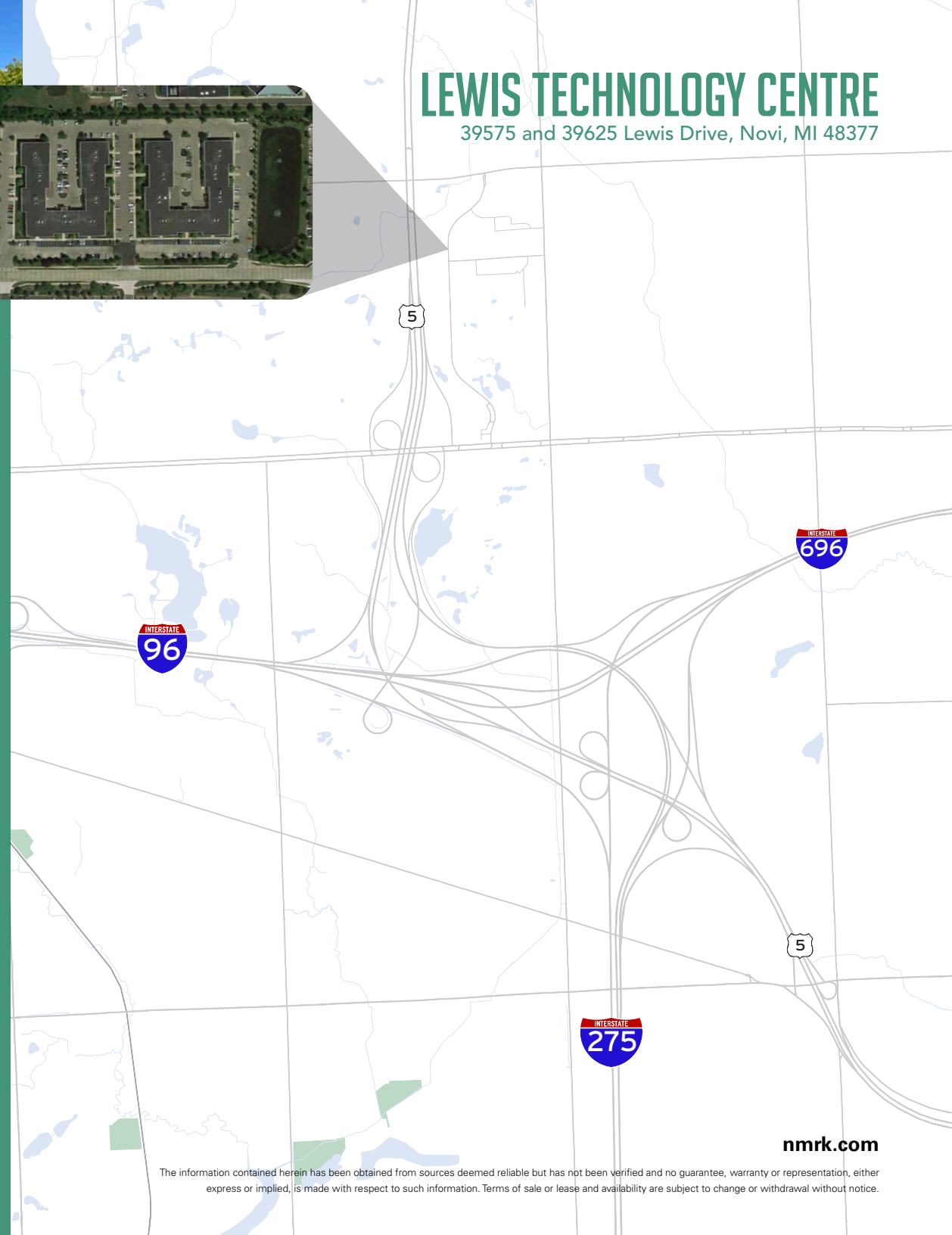
- High image Class A R&D flex building
- Available space includes
 - 12,047 SF
 - 8,732 SF
- 16' ceiling height
- Zoning permits most office, R&D and light industrial uses
- Direct parking lot access with high parking ratios
- Multiple grade level doors
 - Space can accommodate additional grade level doors
- Excellent location with immediate access to M-5, I-696, I-275 and I-96
- Exterior building signage available
- Starbucks, hotels, restaurants and child care in the immediate area

For more information, contact:

Daniel Canvasser
248.350.8141
daniel.canvasser@nrmk.com

Chris Hill
248.350.1192
chris.hill@nrmk.com

Morgan Katz
248.871.2305
morgan.katz@nrmk.com



nrmk.com

The information contained herein has been obtained from sources deemed reliable but has not been verified and no guarantee, warranty or representation, either express or implied, is made with respect to such information. Terms of sale or lease and availability are subject to change or withdrawal without notice.