



214

West 39th Street

Unit 806 • 2,928 SF • 214west39thstreet.com

214 West 39th Street, built in 1910, with 14 stories is located in the cool Midtown West area.

HIGHLIGHTS

- Two attended lobbies
- High-end art deco lobby
- Two passenger elevators in the East lobby and two dual-use passenger/freight elevators in the West lobby
- Office, showroom and creative use spaces available

TRANSPORTATION



at Times Square



at 42nd St-Port Authority Bus Terminal

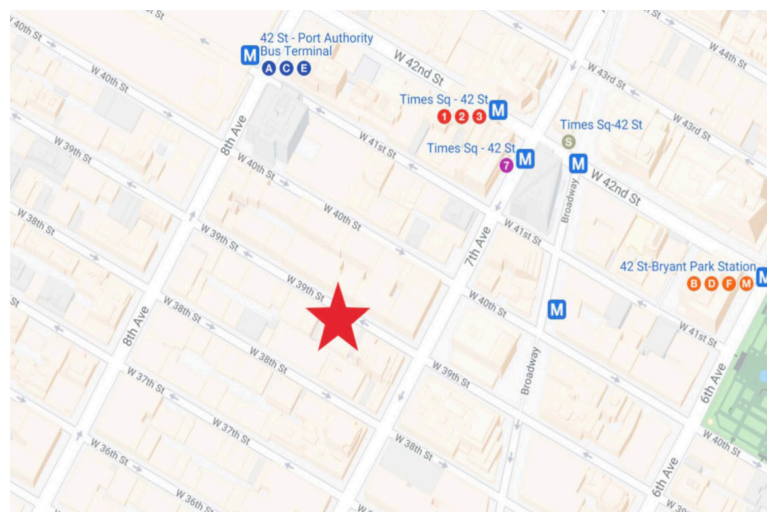


at 42nd St-Bryant Park



at 34th Street

CLOSE PROXIMITY TO:
Penn Station, Grand Central Station, and the PATH



David Scher

Managing Director

914.393.3654

dscher@lee-associates.com

Catherine O'Toole

Executive Managing Director

212.961.6252

cotoole@lee-associates.com



All information supplied is from sources deemed reliable and is furnished subject to errors, omissions, modifications, removal of the listing from sale or lease, and to any listing conditions, including the rates and manner of payment of commissions for particular offerings imposed by principals or agreed by this Company, the terms of which are available to principals or duly licensed brokers. Any square footage dimensions set forth are approximate.

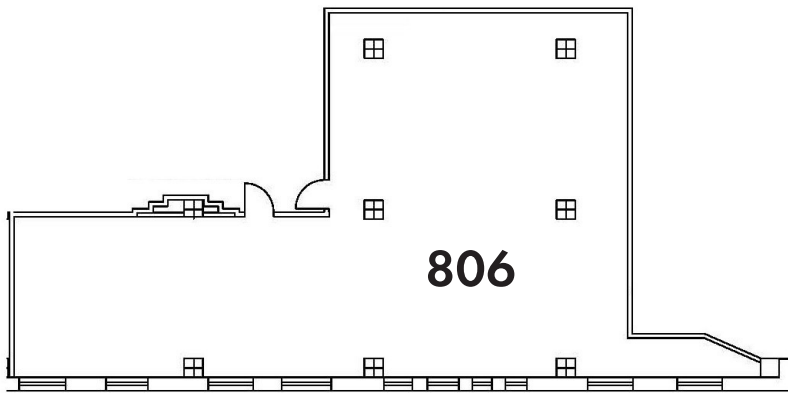
SPACE
2,928 SF

POSSESSION
Immediate

NOTES

- Great front-facing space
- Ample natural light
- Hardwood floors

RENT
Upon Request



David Scher

Managing Director

914.393.3654

dscher@lee-associates.com

Catherine O'Toole

Executive Managing Director

212.961.6252

cotoole@lee-associates.com

LEE & ASSOCIATES
COMMERCIAL REAL ESTATE SERVICES

All information supplied is from sources deemed reliable and is furnished subject to errors, omissions, modifications, removal of the listing from sale or lease, and to any listing conditions, including the rates and manner of payment of commissions for particular offerings imposed by principals or agreed by this Company, the terms of which are available to principals or duly licensed brokers. Any square footage dimensions set forth are approximate.