

EXCLUSIVE

150-02

Guinzburg Road

JAMAICA, QUEENS

Corner of 150th Street and Guinzburg Road

MAG
REALTY ASSOCIATES
— REAL ESTATE REDEFINED —

FOR MORE INFORMATION CONTACT:

Avi Garma | President / Broker

MAG Realty Associates

D 212.920.0226 x101

M 347.935.0216

Avi@Magnyre.com

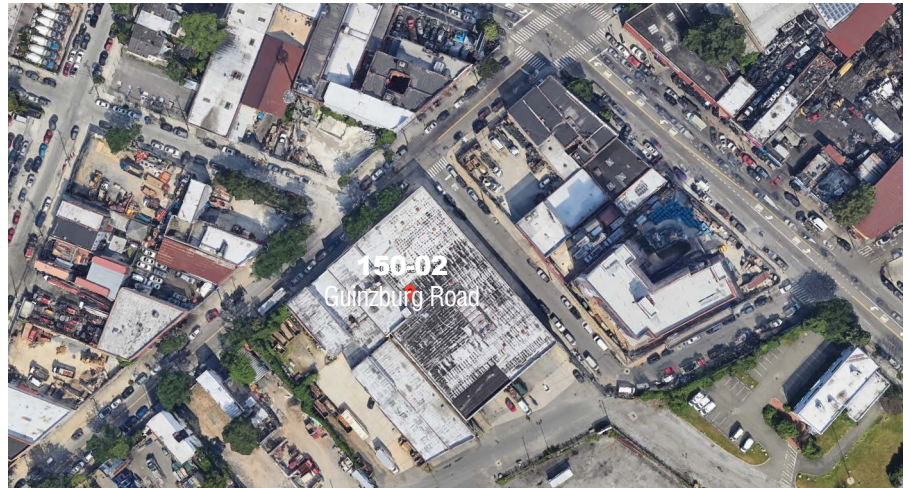
40,000 SF

Covered Parking Facility
With Adjacent Office

**3 Star Industrial Refrigerated
Warehouse Space + Parking
Garage / Additional Storage**

Features:

Building Size:	12,000 SF
Drive-In Garage:	28,000 SF
Typical Floor:	4,000-28,000 SF
Office:	4,000-12,000 SF
Lot Size:	1.06 AC
Year Built/Renovated:	2003/2022
Clear Height:	8'-11'
Column Spacing:	GAR 20' x 20'
Drive-In Bays:	1
Standard Parking Spaces:	100



Location:

- Centrally and Strategically Located
- Minutes to JFK International Airport, the Van Wyck Expressway, the Clearview Expressway
- Reach Manhattan, Brooklyn, and The Bronx within a 30-minute Drive—Connecticut and New Jersey within 35-40 minutes.

150-02

GUINZBURG ROAD,
11435

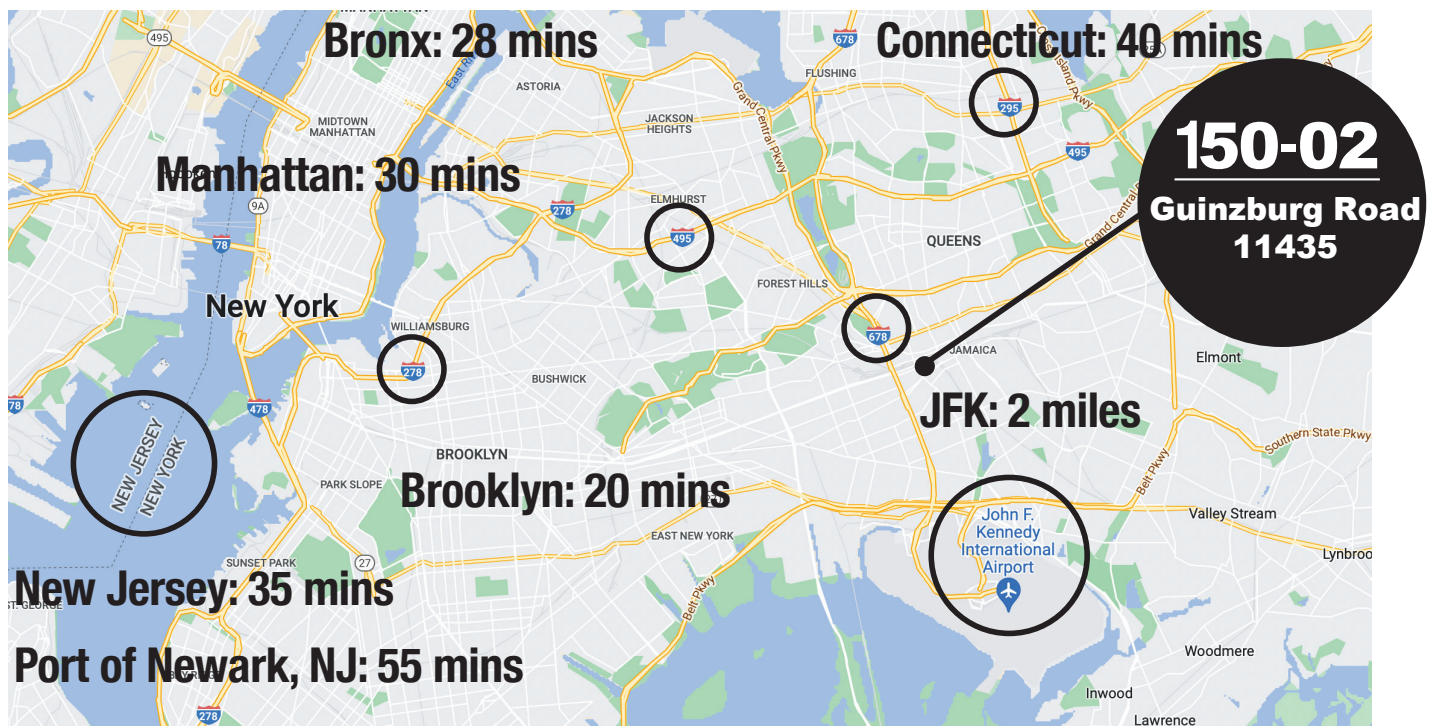
JAMAICA, QUEENS



FOR MORE INFORMATION CONTACT:
Avi Garma | President / Broker
MAG Realty Associates
D 212.920.0226 x101 | M 347.935.0216
Avi@Magnyre.com

Location:

Centrally located in Jamaica, Queens, **minutes (Approx 2.5 Miles) from JFK International Airport**. The property is located at the corner of 150th Street and Guinzburg Road (Less than 200 Feet from Liberty Avenue).



Access:

The 28,000 SF 80 Car Parking Garage offers **direct drive-in access** and is directly accessible from the warehouse, 150th Street, and the loading area.

Centrally and strategically located, **150-02 Guinzburg Road** sits under minutes of **JFK International Airport**, the **Van Wyck Expressway**, the **Clearview Expressway**, and all other major highways. Reach **Manhattan**, **Brooklyn**, and The **Bronx** within a 30-minute drive—**Connecticut** and **New Jersey** within 35-40 minutes.

Transportation:

Walking distance to the **E / F / J / Z subway lines**, **Q6 / Q40 / Q112 bus lines**, the Jamaica LIRR station **LIRR**, and the **AirTrain**.

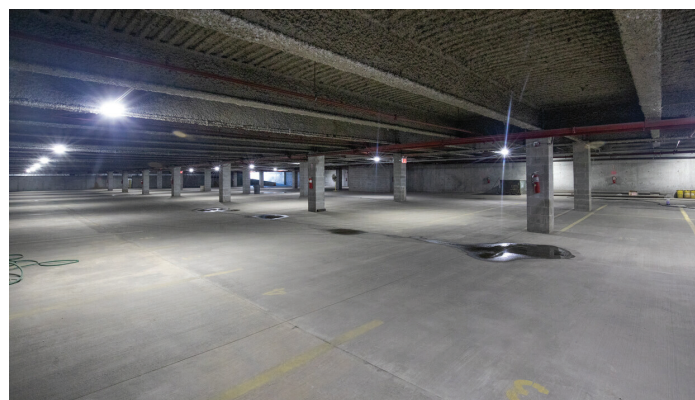
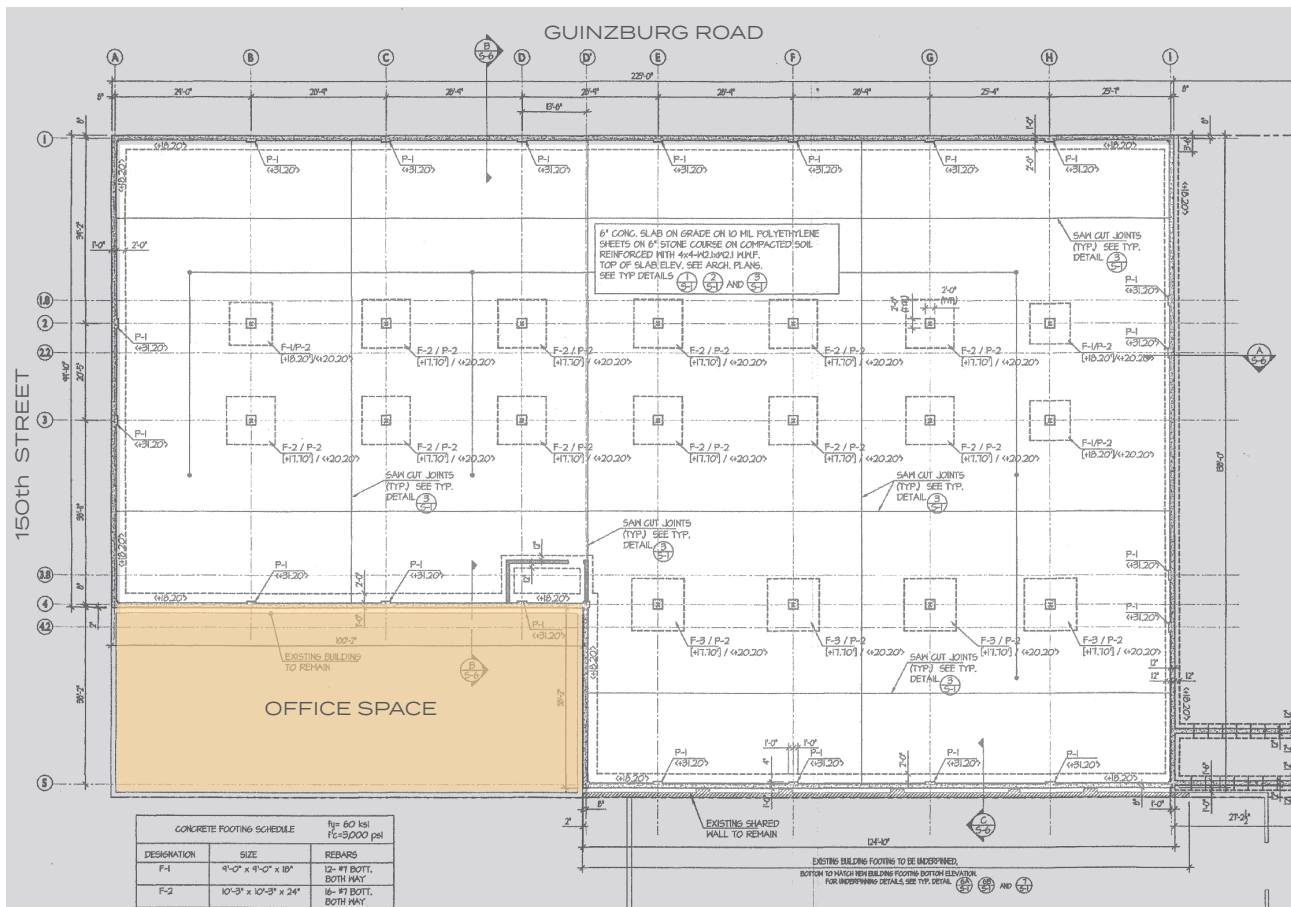


150-02
GUINZBURG ROAD,
11435
JAMAICA, QUEENS



FOR MORE INFORMATION CONTACT:
Avi Garma | President / Broker
 MAG Realty Associates
 D 212.920.0226 x101 | M 347.935.0216
 Avi@Magnyre.com

Fleet Parking Garage / Storage Space: 28,000 SF

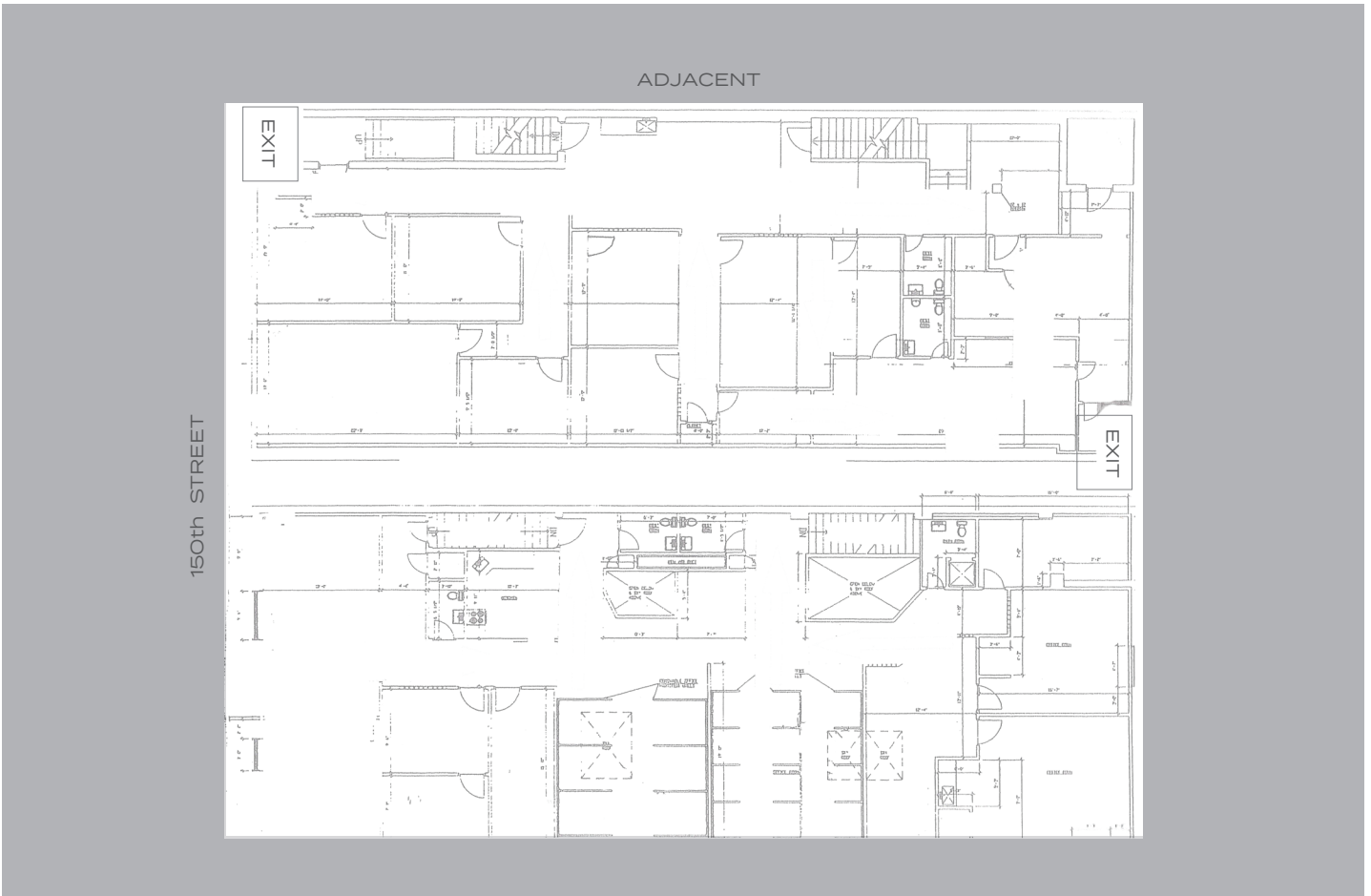


150-02
GUINZBURG ROAD,
11435
JAMAICA, QUEENS



FOR MORE INFORMATION CONTACT:
Avi Garma | President / Broker
MAG Realty Associates
D 212.920.0226 x101 | M 347.935.0216
Avi@Magnyre.com

Office Area: **4,000-12,000 SF**



150-02

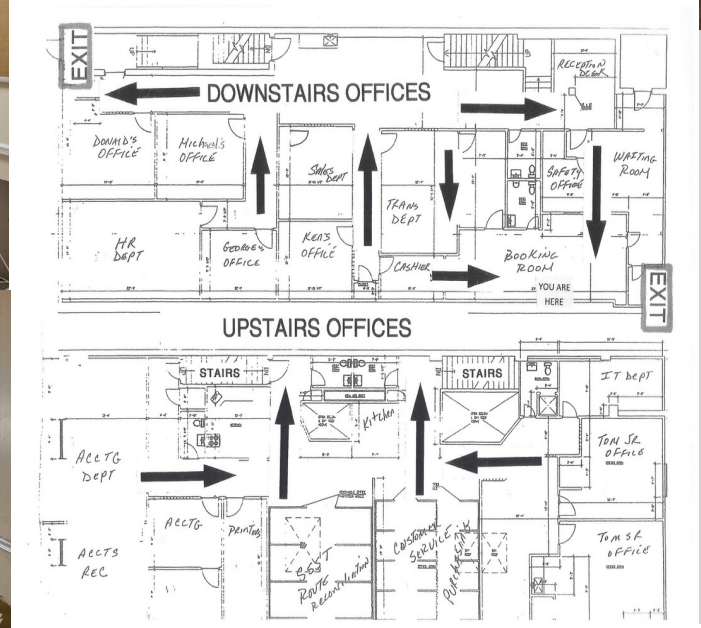
GUINZBURG ROAD,
11435

JAMAICA, QUEENS

MAG

REALTY ASSOCIATES
REAL ESTATE REDEFINED

FOR MORE INFORMATION CONTACT:
Avi Garma | President / Broker
MAG Realty Associates
D 212.920.0226 x101 | M 347.935.0216
Avi@Magnyre.com



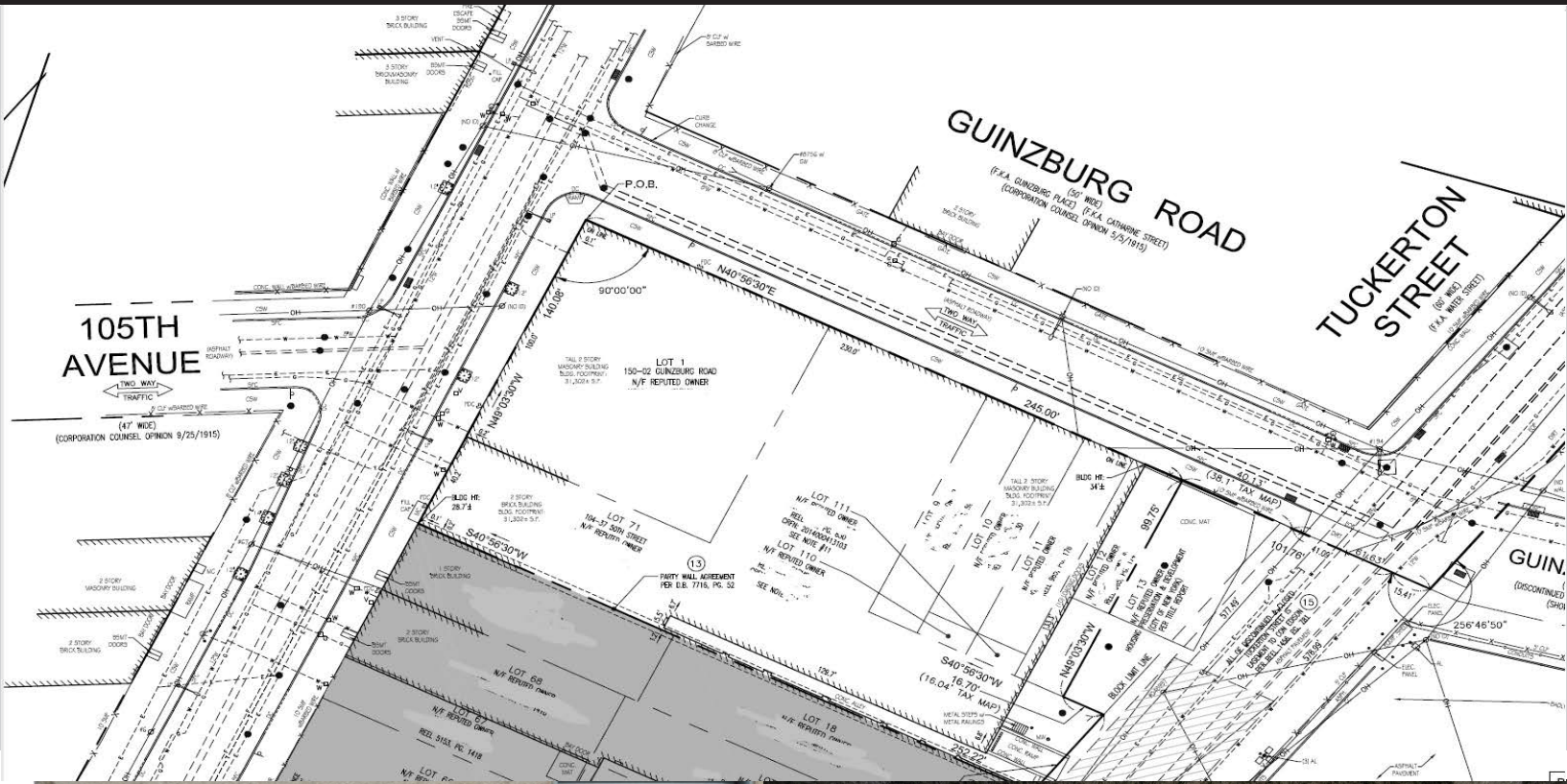
150-02

GUINZBURG ROAD,
11435

JAMAICA, QUEENS



FOR MORE INFORMATION CONTACT:
Avi Garma | President / Broker
MAG Realty Associates
D 212.920.0226 x101 | M 347.935.0216
Avi@Magnyre.com



EXCLUSIVE

150-02

Guinzburg Road

JAMAICA, QUEENS

MAG
REALTY ASSOCIATES
— REAL ESTATE REDEFINED —

FOR MORE INFORMATION CONTACT:

Avi Garma | President / Broker

MAG Realty Associates

D 212.920.0226 x101

M 347.935.0216

Avi@Magnyre.com