

# 2WC

TWO WISCONSIN CIRCLE







# CIRCLING BACK TO CHEVY CHASE'S TOP OFFICE

**2 Wisconsin Circle** presents the best work-life balance for today's workforce. Offering premier office and medical spaces in an unmatched location – Metro, shopping, dining, tenant-only amenities and more. Shake up your day at the office and enjoy thriving in this lively, 24/7 spot.



**235K SF**  
CLASS A OFFICE & MEDICAL

**13**  
STORIES

**20K SF**  
FLOOR PLATES

 TOP TWO FLOORS AVAILABLE

 MOVE-IN READY SPACES

 FITNESS CENTER

 TENANT AMENITY LOUNGE AND CONFERENCE CENTER

 2/1,000 SF GARAGE AND SURFACE PARKING

 ATOP FRIENDSHIP HEIGHTS METRO





# STEP INTO YOUR NEIGHBORHOOD

**CHEVY CHASE PAVILION**

Cheesecake Factory  
Embassy Suites  
Sunrise News Stand  
T-Mobile

**THE COLLECTION**

Amazon Fresh  
Arthur Murray Dance Studio  
Capital Laser & Skin Care  
Capital One Bank  
Chevy Chase Florist  
Clyde's  
Compass

**DePandi**

Hunter's Hound  
Joy by Seven Reasons  
Junction's Bistro, Bar & Bakery  
Luxoptics  
Merritt Gallery  
Potomac Pizza  
Red Panda Art Studio  
Renaldi Dental Arts  
Saks Fifth Avenue  
Salon Lofts  
Sushiko  
Tiffany & Co.  
Westwood Cleaners  
Whyte House Monograms  
Zen Accupressure

**THE SHOPS AT WISCONSIN PLACE**

AcquaLuxe Nails Spa  
Bloomingdale's  
The Capital Grille  
Cole Haan  
Eileen Fisher  
J. Jill  
Le Pain Quotidien  
Lia's  
Nina McLemore  
RTR Pilates  
Sephora  
Tabandeh  
Talbots  
Whole Foods



**COURTYARD**  
BY MARRIOTT

**226**  
ROOMS

the  
**collection**

the shops at  
**WISCONSIN**  
PLACE

**2MC**  
TWO WISCONSIN CIRCLE



**FRIENDSHIP**  
**HEIGHTS**  
**METRO**  
**STATION**

**CHEVY**  
**CHASE**  
PAVILION



**ENJOY TIME OUTSIDE AT**  
**ONE OF FOUR NEARBY PARKS:**

Western Grove Urban Park,  
Johnston Park, Farr Park And The Green





# YOUR DAY IN BALANCE





# BUILDING AMENITIES



★  
RENOVATED LOBBY



WORKPLACE AMENITIES

OUTDOOR WORK & COLLABORATION SPACE



COMMUNITY ACTIVATIONS



WALL OF WINDOWS & AMPLE NATURAL LIGHT

LOUNGE AREA

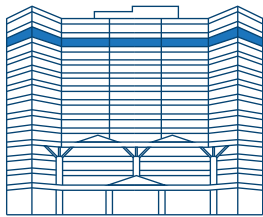
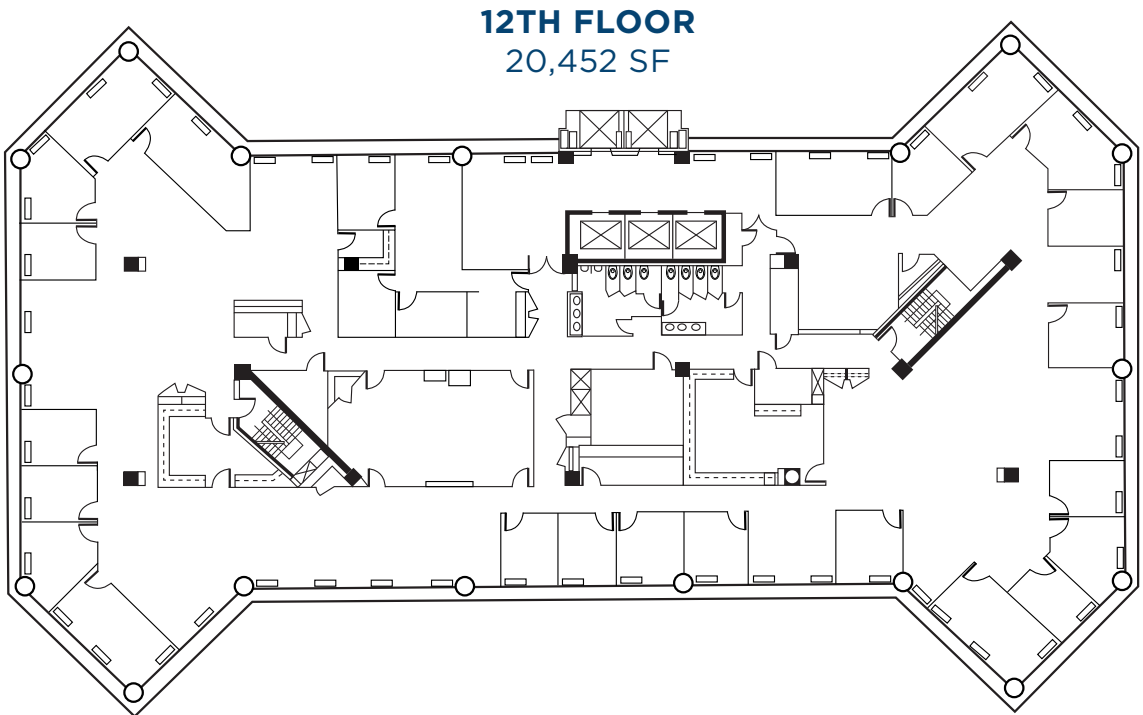
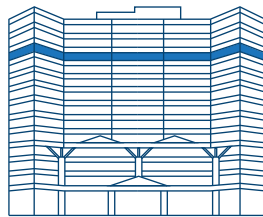
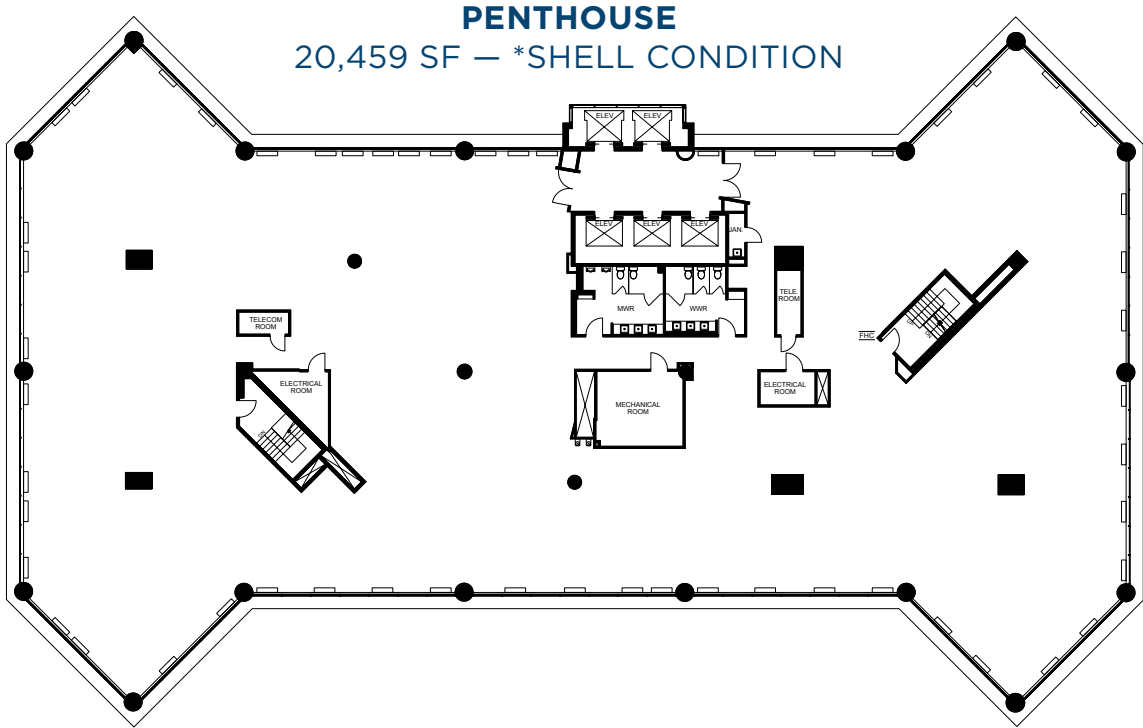
STATE-OF-THE-ART MACHINES

TOWELS PROVIDED

FITNESS & WELLNESS

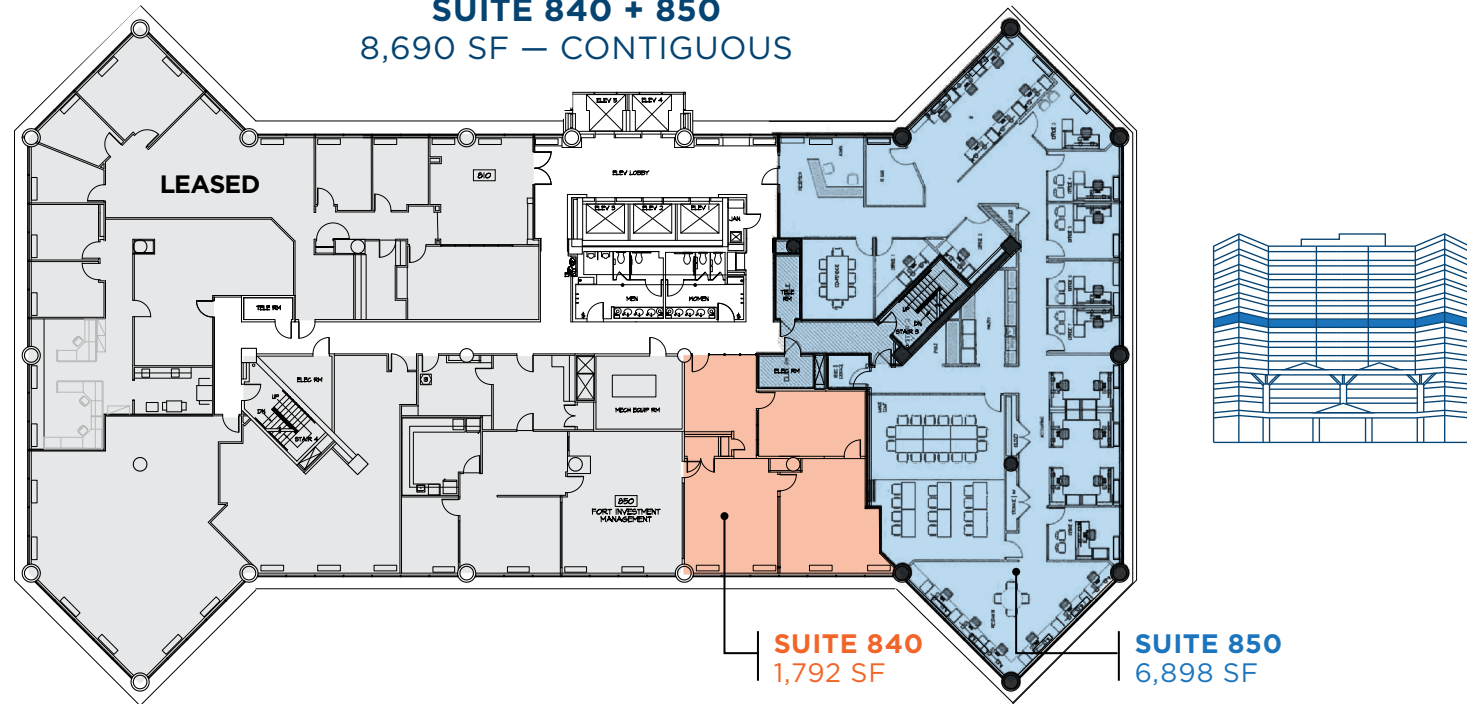


40,000 SF  
TOP FLOOR OPPORTUNITIES  
2 FLOORS CONTIGUOUS

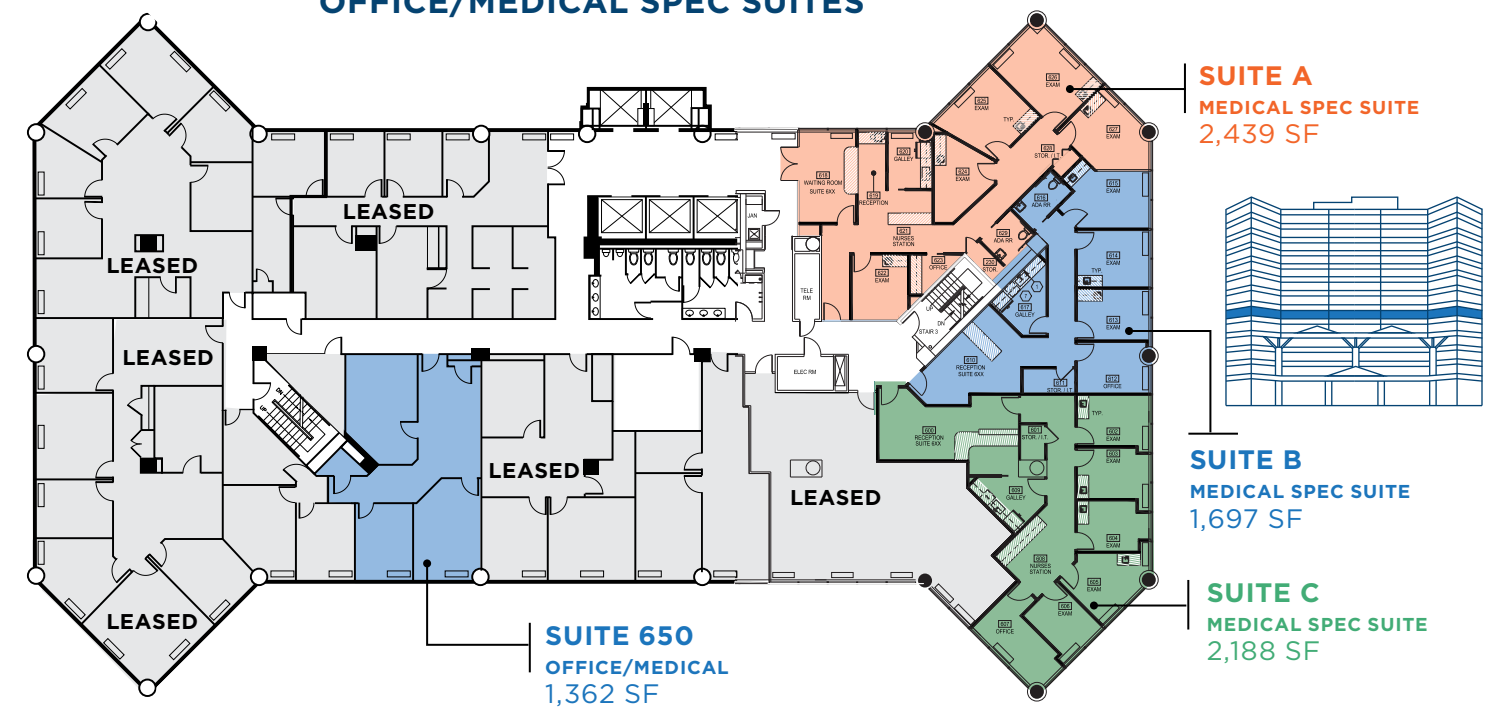




**8TH FLOOR**  
**SUITE 840 + 850**  
8,690 SF – CONTIGUOUS



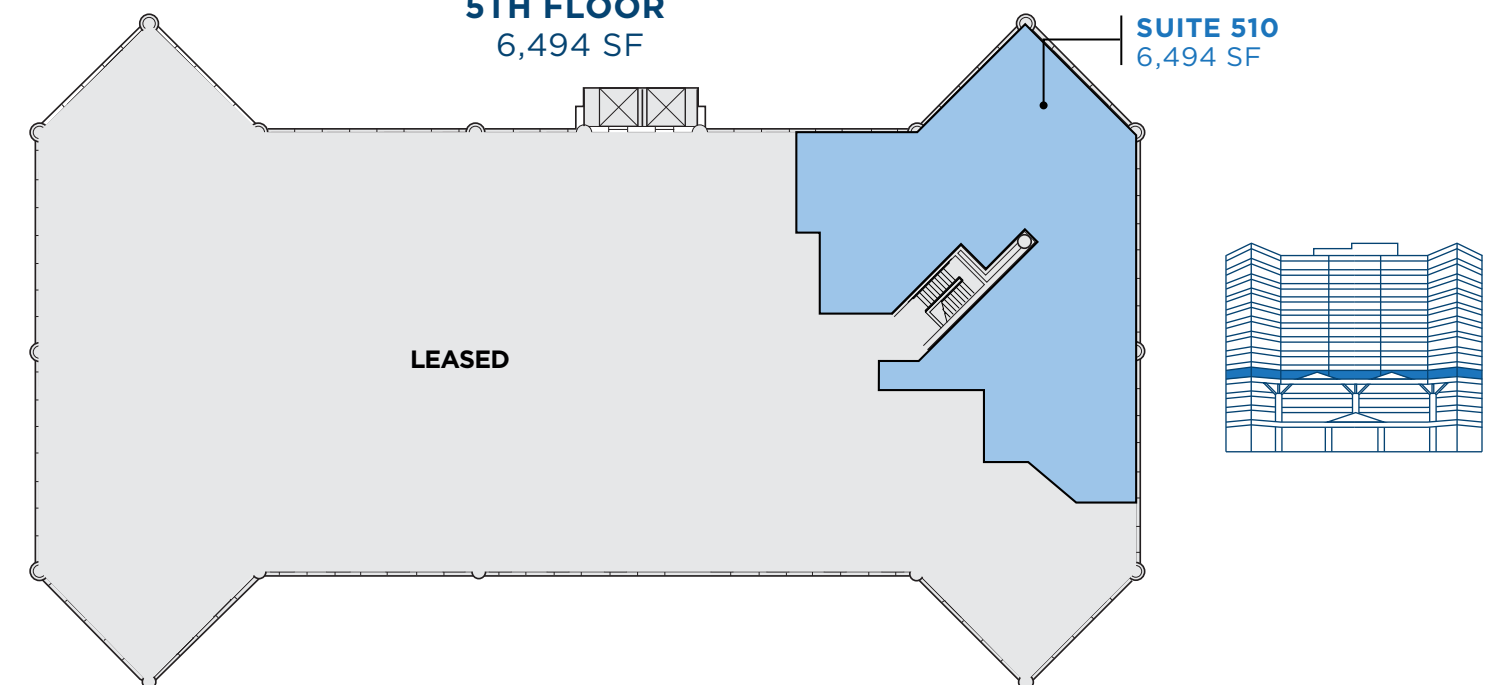
**6TH FLOOR**  
**OFFICE/MEDICAL SPEC SUITES**



**BRAND NEW SPEC SUITES**



**5TH FLOOR**  
6,494 SF







Since 1890, CCLC has owned, managed and developed exceptional office, retail and residential properties throughout the Washington, D.C. region. CCLC is committed to continuing our proud tradition of leading the region's transit-oriented developments while taking a collaborative, community-first approach to investing in our local neighborhoods.







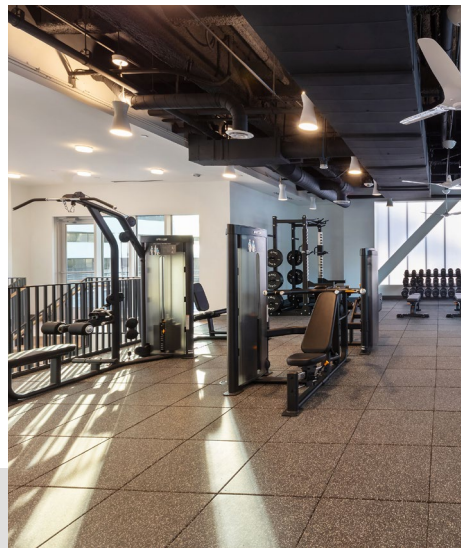
## elevate every day

Ascend, created by The Chevy Chase Land Company, is a shared amenity program designed to enhance the work environment and provide convenient access to various amenities and experiences across the DC metro area.

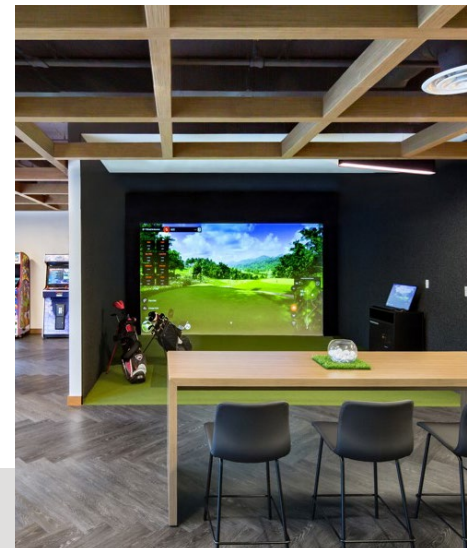
With Ascend, employees have access to a variety of events and environments that promote creativity, wellness, and collaboration. From state-of-the-art fitness centers to tranquil rooftop retreats, every aspect of Ascend spaces are crafted to elevate the team's performance and enjoyment within—and outside of—the office. Powered by the CBRE Host app, Ascend provides workspaces that are more than just places to work.



workplace  
amenities



fitness &  
wellness



community  
activations



### 2 wisconsin circle

- New Fitness Center with Pelotons
- Outdoor Seating
- Host Concierge Services
- Seasonal Community Events



### 5425 wisconsin avenue

- Conference Center with 60-Person Training Room
- Tenant Lounge with Golf Simulator
- Fitness Center
- Outdoor Seating
- Host Concierge Services
- Seasonal Community Events

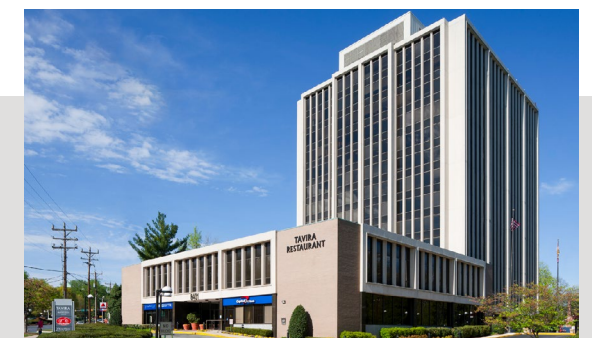


### 2 bethesda metro

- 20-Person Conference Room
- Tenant Lounge with Pool Table
- Fitness Center with Yoga Room and Pelotons
- Expansive Rooftop Terrace
- Host Concierge Services



5471 WISCONSIN AVE



8401 CONNECTICUT AVE

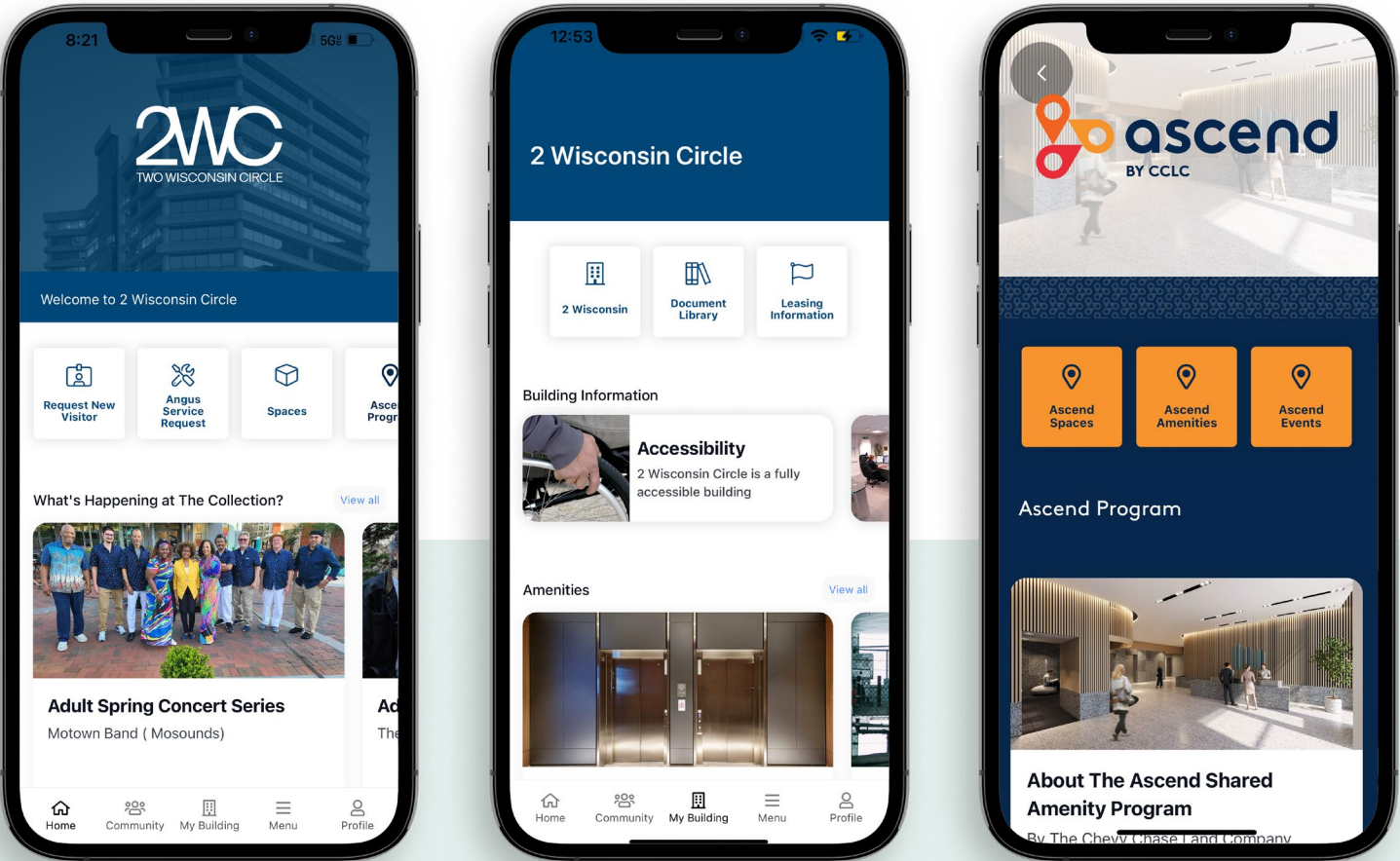


# Enhancing the workplace experience

Seamlessly connect with properties in CCLC portfolio through Host.



Host, from CBRE, is an enterprise-grade platform and mobile app that connects workplace spaces, services, amenities and building systems through an intuitive, hospitality-driven interface. Driven by people and technology at 2 Bethesda Metro, 2 Wisconsin Circle and 5425 Wisconsin Avenue, Host helps transform the workplace to help people perform, collaborate, and thrive.



Click or Scan to Learn More About CBRE Host



Click or Scan to Learn More About 2 Wisconsin Circle



# 2WC

TWO WISCONSIN CIRCLE

**DANNY SHERIDAN**  
danny.sheridan@jll.com

**ANDY THAU**  
andrew.thau@jll.com

**ALDEN STABB**  
alden.stabb@jll.com

**CONN CURRY**  
conn.curry@jll.com

**+1 301 287 9950**



Although information has been obtained from sources deemed reliable, neither Owner nor JLL makes any guarantees, warranties or representations, express or implied, as to the completeness or accuracy as to the information contained herein. Any projections, opinions, assumptions or estimates used are for example only. There may be differences between projected and actual results, and those differences may be material. The Property may be withdrawn without notice. Neither Owner nor JLL accepts any liability for any loss or damage suffered by any party resulting from reliance on this information. If the recipient of this information has signed a confidentiality agreement regarding this matter, this information is subject to the terms of that agreement. ©2024. Jones Lang LaSalle IP, Inc. All rights reserved.