

EYDE DEVELOPMENT

830 W. LAKE LANSING ROAD
EAST LANSING, MI 48823



FOR LEASE

BUILDING SQUARE FOOTAGE:

- 24,870 SF Building

ADVANTAGES:

- On site parking available
- Close proximity to Michigan State University

FEATURES/AMENITIES:

- Close proximity to restaurants, gyms, dry cleaners, grocery and retail

STRATEGIC LOCATION:

- Strategically located just east of the Lake Lansing/US-127 interchange
- Easy access to highway
- Close proximity to medical and educational facilities



CONTACT

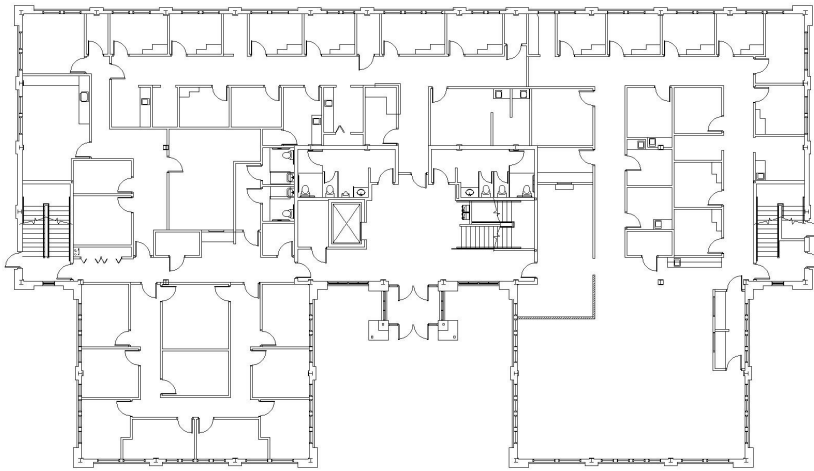
Eyde Development
517-903-3933 | eyde.com

EYDE DEVELOPMENT

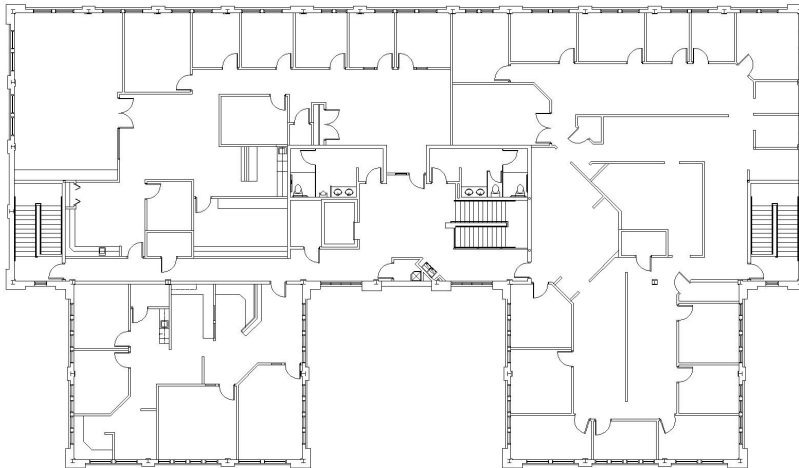
830 W. LAKE LANSING ROAD
EAST LANSING, MI 48823

BUILDING PLAN

First Floor



Second Floor



CONTACT

Eyde Development
517-903-3933 | eyde.com

| Eyde Development | 300 S. Washington Square #400 Lansing, MI 48933 |
| Phone: 517-903-3933 | Fax: 517-484-5695 | www.eyde.com |