

TENTATIVE TRACT MAP NO. 33840

AMENDMENT NO. 4 IN THE CITY OF WILDOMAR, COUNTY OF RIVERSIDE APN: 376-043-027

APN 376-043-027

APPROVAL NOTES

1. 1/4" (approx) SECTION OVER 2' OF CONCRETE AND REINFORCED STEEL
2. REINFORCED STEEL TO MATCH EXISTING
3. 1/4" (approx) SECTION OVER 2' OF CONCRETE AND REINFORCED STEEL
4. 1/4" (approx) SECTION OVER 2' OF CONCRETE AND REINFORCED STEEL
5. 1/4" (approx) SECTION OVER 2' OF CONCRETE AND REINFORCED STEEL
6. 1/4" (approx) SECTION OVER 2' OF CONCRETE AND REINFORCED STEEL
7. 1/4" (approx) SECTION OVER 2' OF CONCRETE AND REINFORCED STEEL
8. 1/4" (approx) SECTION OVER 2' OF CONCRETE AND REINFORCED STEEL
9. 1/4" (approx) SECTION OVER 2' OF CONCRETE AND REINFORCED STEEL
10. 1/4" (approx) SECTION OVER 2' OF CONCRETE AND REINFORCED STEEL
11. 1/4" (approx) SECTION OVER 2' OF CONCRETE AND REINFORCED STEEL
12. 1/4" (approx) SECTION OVER 2' OF CONCRETE AND REINFORCED STEEL
13. 1/4" (approx) SECTION OVER 2' OF CONCRETE AND REINFORCED STEEL
14. 1/4" (approx) SECTION OVER 2' OF CONCRETE AND REINFORCED STEEL
15. 1/4" (approx) SECTION OVER 2' OF CONCRETE AND REINFORCED STEEL
16. 1/4" (approx) SECTION OVER 2' OF CONCRETE AND REINFORCED STEEL
17. 1/4" (approx) SECTION OVER 2' OF CONCRETE AND REINFORCED STEEL
18. 1/4" (approx) SECTION OVER 2' OF CONCRETE AND REINFORCED STEEL
19. 1/4" (approx) SECTION OVER 2' OF CONCRETE AND REINFORCED STEEL
20. 1/4" (approx) SECTION OVER 2' OF CONCRETE AND REINFORCED STEEL
21. 1/4" (approx) SECTION OVER 2' OF CONCRETE AND REINFORCED STEEL
22. 1/4" (approx) SECTION OVER 2' OF CONCRETE AND REINFORCED STEEL
23. 1/4" (approx) SECTION OVER 2' OF CONCRETE AND REINFORCED STEEL
24. 1/4" (approx) SECTION OVER 2' OF CONCRETE AND REINFORCED STEEL
25. 1/4" (approx) SECTION OVER 2' OF CONCRETE AND REINFORCED STEEL
26. 1/4" (approx) SECTION OVER 2' OF CONCRETE AND REINFORCED STEEL
27. 1/4" (approx) SECTION OVER 2' OF CONCRETE AND REINFORCED STEEL
28. 1/4" (approx) SECTION OVER 2' OF CONCRETE AND REINFORCED STEEL
29. 1/4" (approx) SECTION OVER 2' OF CONCRETE AND REINFORCED STEEL
30. 1/4" (approx) SECTION OVER 2' OF CONCRETE AND REINFORCED STEEL
31. 1/4" (approx) SECTION OVER 2' OF CONCRETE AND REINFORCED STEEL
32. 1/4" (approx) SECTION OVER 2' OF CONCRETE AND REINFORCED STEEL
33. 1/4" (approx) SECTION OVER 2' OF CONCRETE AND REINFORCED STEEL
34. 1/4" (approx) SECTION OVER 2' OF CONCRETE AND REINFORCED STEEL
35. 1/4" (approx) SECTION OVER 2' OF CONCRETE AND REINFORCED STEEL
36. 1/4" (approx) SECTION OVER 2' OF CONCRETE AND REINFORCED STEEL
37. 1/4" (approx) SECTION OVER 2' OF CONCRETE AND REINFORCED STEEL
38. 1/4" (approx) SECTION OVER 2' OF CONCRETE AND REINFORCED STEEL
39. 1/4" (approx) SECTION OVER 2' OF CONCRETE AND REINFORCED STEEL
40. 1/4" (approx) SECTION OVER 2' OF CONCRETE AND REINFORCED STEEL
41. 1/4" (approx) SECTION OVER 2' OF CONCRETE AND REINFORCED STEEL
42. 1/4" (approx) SECTION OVER 2' OF CONCRETE AND REINFORCED STEEL
43. 1/4" (approx) SECTION OVER 2' OF CONCRETE AND REINFORCED STEEL
44. 1/4" (approx) SECTION OVER 2' OF CONCRETE AND REINFORCED STEEL
45. 1/4" (approx) SECTION OVER 2' OF CONCRETE AND REINFORCED STEEL
46. 1/4" (approx) SECTION OVER 2' OF CONCRETE AND REINFORCED STEEL
47. 1/4" (approx) SECTION OVER 2' OF CONCRETE AND REINFORCED STEEL
48. 1/4" (approx) SECTION OVER 2' OF CONCRETE AND REINFORCED STEEL
49. 1/4" (approx) SECTION OVER 2' OF CONCRETE AND REINFORCED STEEL
50. 1/4" (approx) SECTION OVER 2' OF CONCRETE AND REINFORCED STEEL

EXAMINER NOTES

1. ADVISORY: EXISTING UTILITY AND EQUIPMENT OF OWNER TO BE REMOVED AND REINSTALLED AT OWNER'S RISK.
2. ADVISORY: EXISTING UTILITY AND EQUIPMENT OF OWNER TO BE REMOVED AND REINSTALLED AT OWNER'S RISK.
3. ADVISORY: EXISTING UTILITY AND EQUIPMENT OF OWNER TO BE REMOVED AND REINSTALLED AT OWNER'S RISK.

Lot No.	Area (S.F.)	Area (Ac.)	Area (S.F.)	Area (Ac.)
1	10,000	.23	10,000	.23
2	10,000	.23	10,000	.23
3	10,000	.23	10,000	.23
4	10,000	.23	10,000	.23
5	10,000	.23	10,000	.23
6	10,000	.23	10,000	.23
7	10,000	.23	10,000	.23
8	10,000	.23	10,000	.23
9	10,000	.23	10,000	.23
10	10,000	.23	10,000	.23
11	10,000	.23	10,000	.23
12	10,000	.23	10,000	.23
13	10,000	.23	10,000	.23
14	10,000	.23	10,000	.23
15	10,000	.23	10,000	.23
16	10,000	.23	10,000	.23
17	10,000	.23	10,000	.23
18	10,000	.23	10,000	.23
19	10,000	.23	10,000	.23
20	10,000	.23	10,000	.23
21	10,000	.23	10,000	.23
22	10,000	.23	10,000	.23
23	10,000	.23	10,000	.23
24	10,000	.23	10,000	.23
25	10,000	.23	10,000	.23
26	10,000	.23	10,000	.23
27	10,000	.23	10,000	.23
28	10,000	.23	10,000	.23
29	10,000	.23	10,000	.23
30	10,000	.23	10,000	.23
31	10,000	.23	10,000	.23
32	10,000	.23	10,000	.23
33	10,000	.23	10,000	.23
34	10,000	.23	10,000	.23
35	10,000	.23	10,000	.23
36	10,000	.23	10,000	.23
37	10,000	.23	10,000	.23
38	10,000	.23	10,000	.23
39	10,000	.23	10,000	.23
40	10,000	.23	10,000	.23
41	10,000	.23	10,000	.23
42	10,000	.23	10,000	.23
43	10,000	.23	10,000	.23
44	10,000	.23	10,000	.23
45	10,000	.23	10,000	.23
46	10,000	.23	10,000	.23
47	10,000	.23	10,000	.23
48	10,000	.23	10,000	.23
49	10,000	.23	10,000	.23
50	10,000	.23	10,000	.23

Lot No.	Area (S.F.)	Area (Ac.)	Area (S.F.)	Area (Ac.)
51	10,000	.23	10,000	.23
52	10,000	.23	10,000	.23
53	10,000	.23	10,000	.23
54	10,000	.23	10,000	.23
55	10,000	.23	10,000	.23
56	10,000	.23	10,000	.23
57	10,000	.23	10,000	.23
58	10,000	.23	10,000	.23
59	10,000	.23	10,000	.23
60	10,000	.23	10,000	.23
61	10,000	.23	10,000	.23
62	10,000	.23	10,000	.23
63	10,000	.23	10,000	.23
64	10,000	.23	10,000	.23
65	10,000	.23	10,000	.23
66	10,000	.23	10,000	.23
67	10,000	.23	10,000	.23
68	10,000	.23	10,000	.23
69	10,000	.23	10,000	.23
70	10,000	.23	10,000	.23
71	10,000	.23	10,000	.23
72	10,000	.23	10,000	.23
73	10,000	.23	10,000	.23
74	10,000	.23	10,000	.23
75	10,000	.23	10,000	.23
76	10,000	.23	10,000	.23
77	10,000	.23	10,000	.23
78	10,000	.23	10,000	.23
79	10,000	.23	10,000	.23
80	10,000	.23	10,000	.23

NOT TO BE CONSIDERED FOR RECORDATION UNLESS THE TRACT MAP IS FIRST RECORDED IN THE PUBLIC RECORDS OF THE COUNTY OF RIVERSIDE, CALIFORNIA.

APPLICATORS

APPLICATORS: [Name]

ENGINEERS

ENGINEERS: [Name]

PLANNERS

PLANNERS: [Name]

NOTES

1. SEE ABOVE LEGAL DESCRIPTION.

LEGAL DESCRIPTION

ALL OF SECTION 12, BLOCK 12, OF THE TRACT MAP NO. 33840, IN THE CITY OF WILDOMAR, COUNTY OF RIVERSIDE, CALIFORNIA.

ZONING

ZONING: R-1 MDR

APPROVALS

APPROVALS: [Signatures]

REVISIONS

DATE	DESCRIPTION
12/15/21	INITIAL DESIGN
12/16/21	REVISED DESIGN
12/17/21	FINAL DESIGN

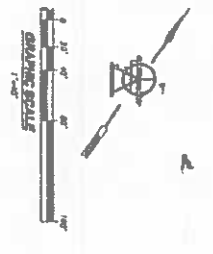
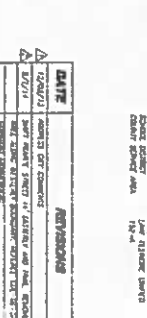
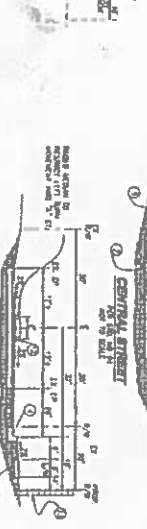
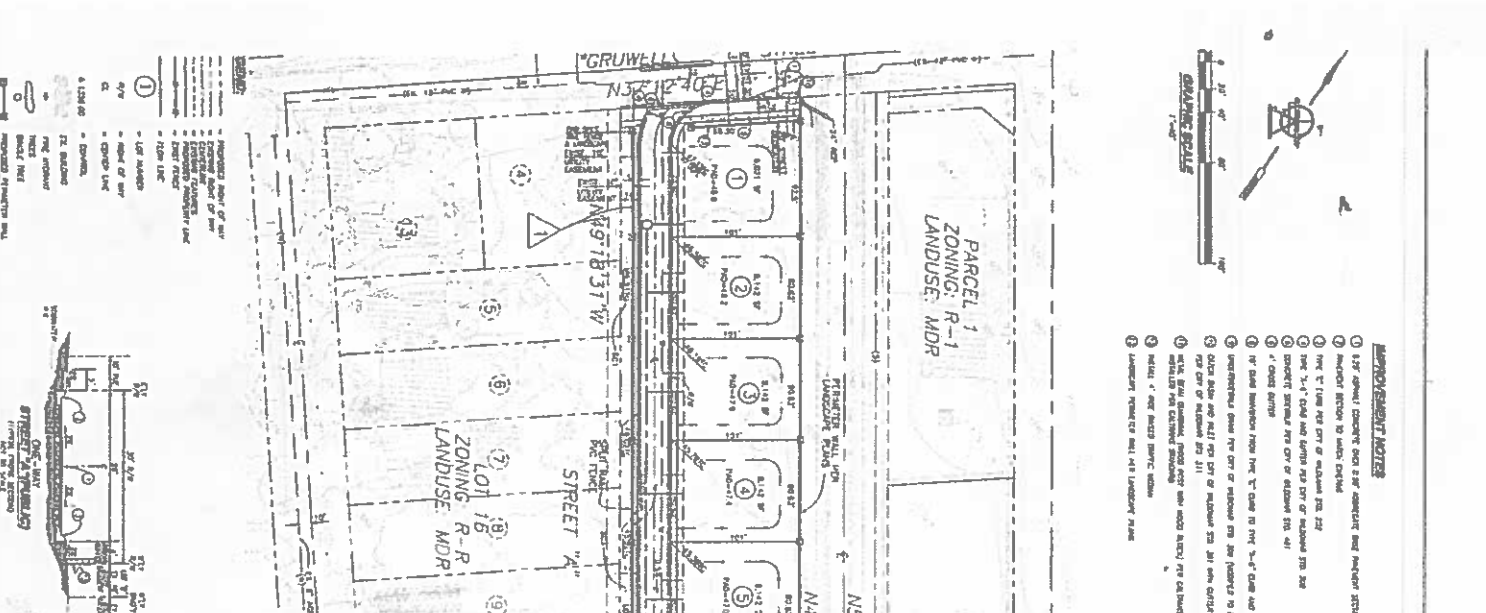
REVISIONS

REVISIONS: [Details]

NOTES

NOTES: [Additional information]

RDS & ASSOCIATES
CITY OF WILDOMAR



Map My County Map

Elm Street, Wildomar



- Legend**
-  Parcels
 -  Blueline Streams
 -  City Areas

Notes

IMPORTANT: Maps and data are to be used for reference purposes only. Map features are approximate, and are not necessarily accurate to surveying or engineering standards. The County of Riverside makes no warranty or guarantee as to the content (the source is often third party), accuracy, timeliness, or completeness of any of the data provided, and assumes no legal responsibility for the information contained on this map. Any use of this product with respect to accuracy and precision shall be the sole responsibility of the user.



0 188 376 Feet

REPORT PRINTED ON: 6/20/2018 1:20:16 PM

© Riverside County GIS