



FOR LEASE
Total Available +/- 5,072 SF

[Click Here for Video Tour](#)



The Pasture | Building A Suite 1

1275 N 1250 W
Centerville, UT 84014

Jones Lang LaSalle Americas, Inc.

For More Information, please contact:

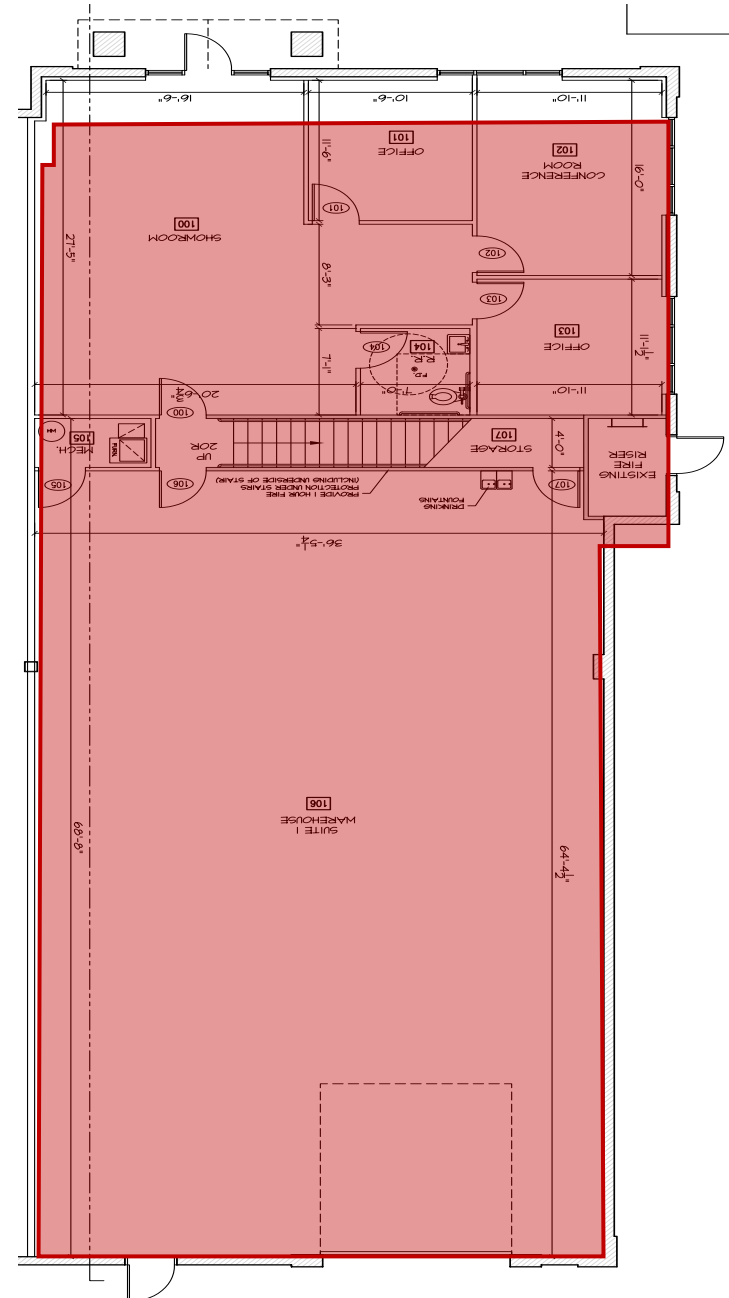
Bronson Rawlins
Associate, Brokerage
T +1 801 456 9513
bronson.rawlins@am.jll.com

Brandon Rawlins
Principle Broker
T +1 801 456 9521
brandon.rawlins@am.jll.com

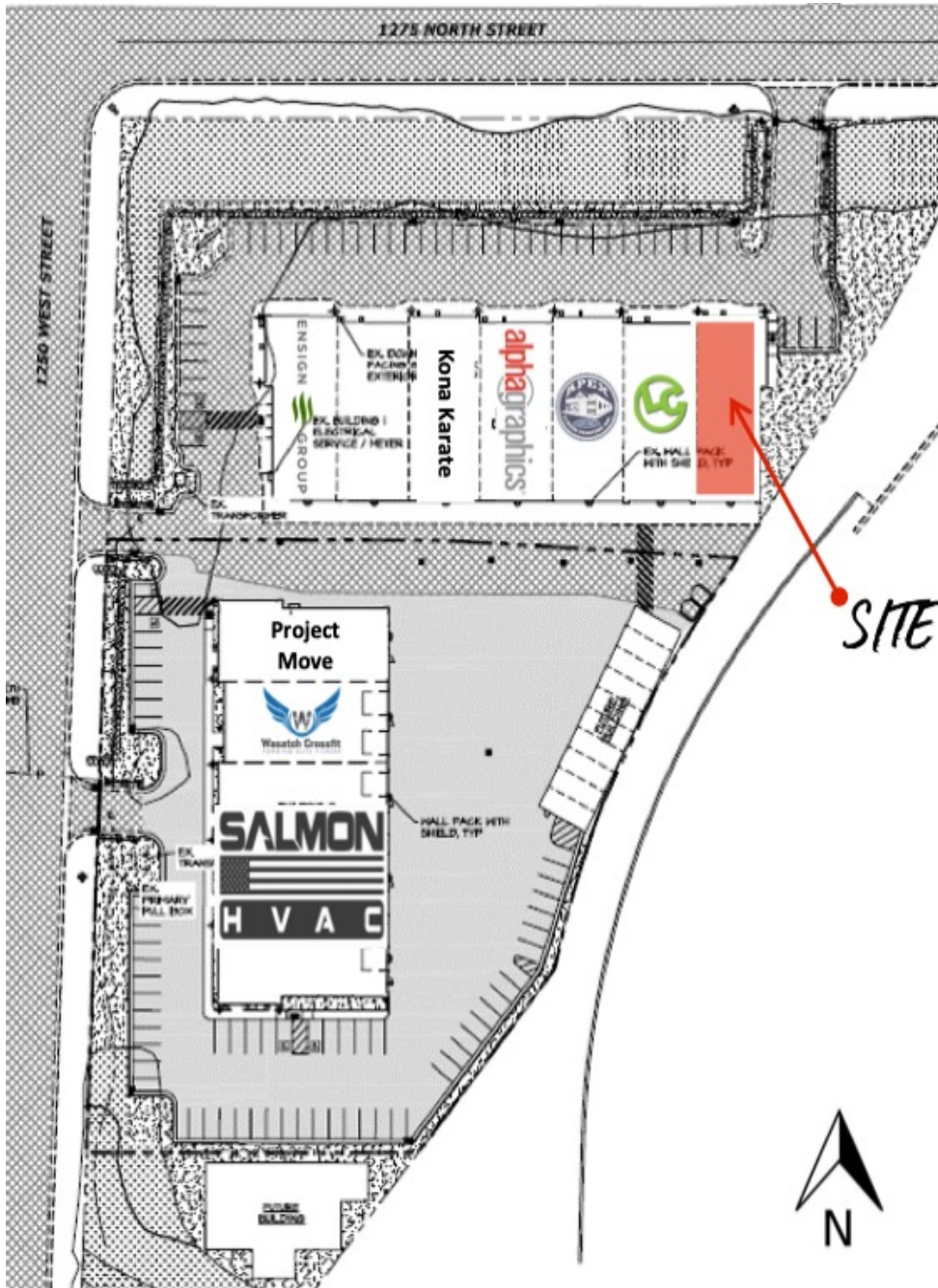
Property Specifications



Building size	14,518 SF
Available S.F	5,072 SF
Available	30 Day Notice
Warehouse S.F	2,928 SF
Office S.F	2,144 SF
Lease Rate	Office - \$1.32/SF Whse - \$0.85/SF CAM - \$0.18/SF
Clear height	20'-22'
Grade level doors	1 (12' X 14')
Heated/Cooled Warehouse	Yes
Power	200 amp – 3 phase
Auto parking	2.75/1,000 SF
Built	2016



The Pasture | Building A Suite 1



[Click Here for Video Tour](#)



Bronson Rawlins
Associate, Brokerage
T +1 801 456 9513
bronson.rawlins@am.jll.com

Brandon Rawlins
Principle Broker
T +1 801 456 9521
brandon.rawlins@am.jll.com

Although information has been obtained from sources deemed reliable, JLL does not make any guarantees, warranties or representations, express or implied, as to the completeness or accuracy as to the information contained herein. Any projections, opinions, assumptions or estimates used are for example only. There may be differences between projected and actual results, and those differences may be material. JLL does not accept any liability for any loss or damage suffered by any party resulting from reliance on this information. If the recipient of this information has signed a confidentiality agreement with JLL regarding this matter, this information is subject to the terms of that agreement. ©2021. Jones Lang LaSalle IP, Inc. All rights reserved.

Jones Lang LaSalle Americas, Inc.