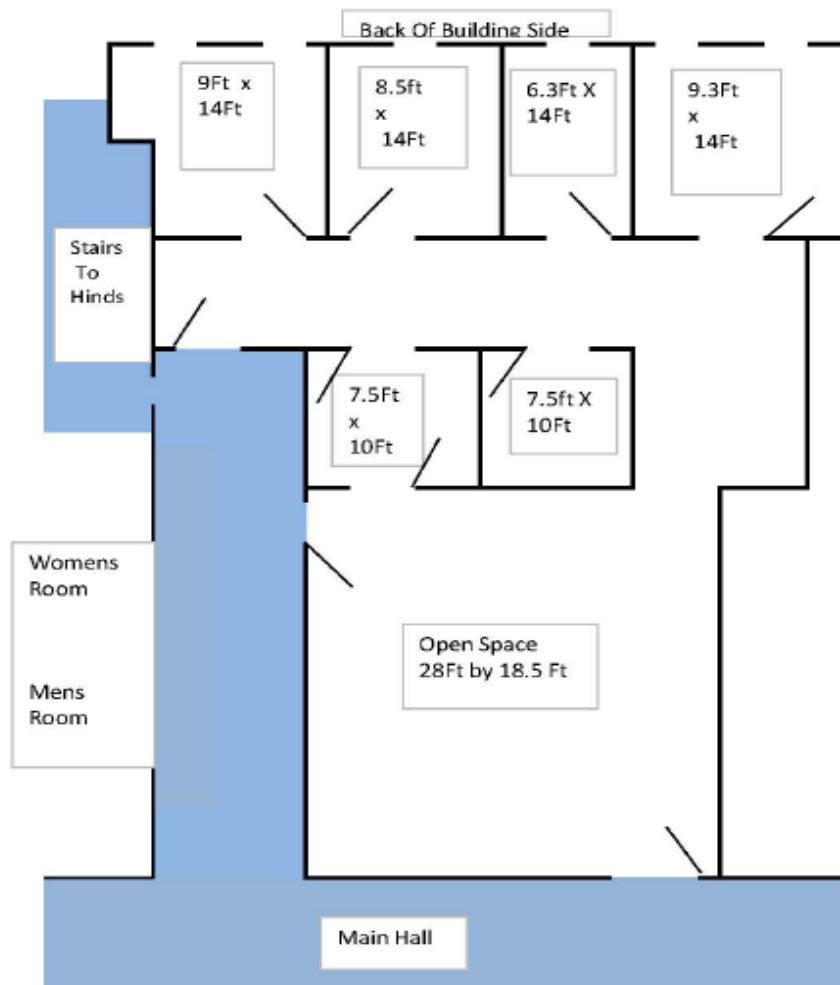


# Office Available

## 300 Wildwood Ave, Suite 210 Woburn Ma

Available April 2025 with 1,660+/- sq feet at only \$2,325 per month ( \$16.80+/- per sq ft) includes all. Yes that includes all taxes, utilities, CAM, ect. Great price. Note it is 2nd floor without an elevator. It has 4-5 offices, a storage closet ( or small 5th office), a coffee/break area, and large open space and hallways all within the leased space and the bathrooms are immediately adjacent. Parking lot with solar panel covered parking. Near Rte 93 Rte 95. **Great location, great office, and great price**



**300 Wildwood Ave, Suite 210 Woburn, Ma 01801**

**1,660 Rentable Square Feet +/-**

Areas within bolded lines is exclusive use and rest are common areas, such as main hall in blue and rest rooms. Information deemed reliable but not guaranteed.

**Contact Tobias Fisher Broker Manager 781-267-6337 [tfisherrealty@aol.com](mailto:tfisherrealty@aol.com)**

Front Entrance



Solar Panel Covered Parking



Open Office Area



Office1 With Windows



Office 2 With Windows



Office 3 With Window



Office 4 With Window



Interior Halls Break Area



Large Closet (or 5th small office)

