

**SELLER FINANCING AVAILABLE
SHOWN BY APPOINTMENT ONLY**

**282-318R Old Canterbury Turnpike, Norwich
101.47 Acres in R-80 Zone**



**FOR SALE
\$975,000**

- ⇒ Acres: 101.47
- ⇒ Frontage: 657 Ft.
- ⇒ Zone: R-80
- ⇒ Taxes: 2,594
- ⇒ 1/2 Mile to 395
- ⇒ Includes a 140'x96'x29'
Fabric Building



LYMAN

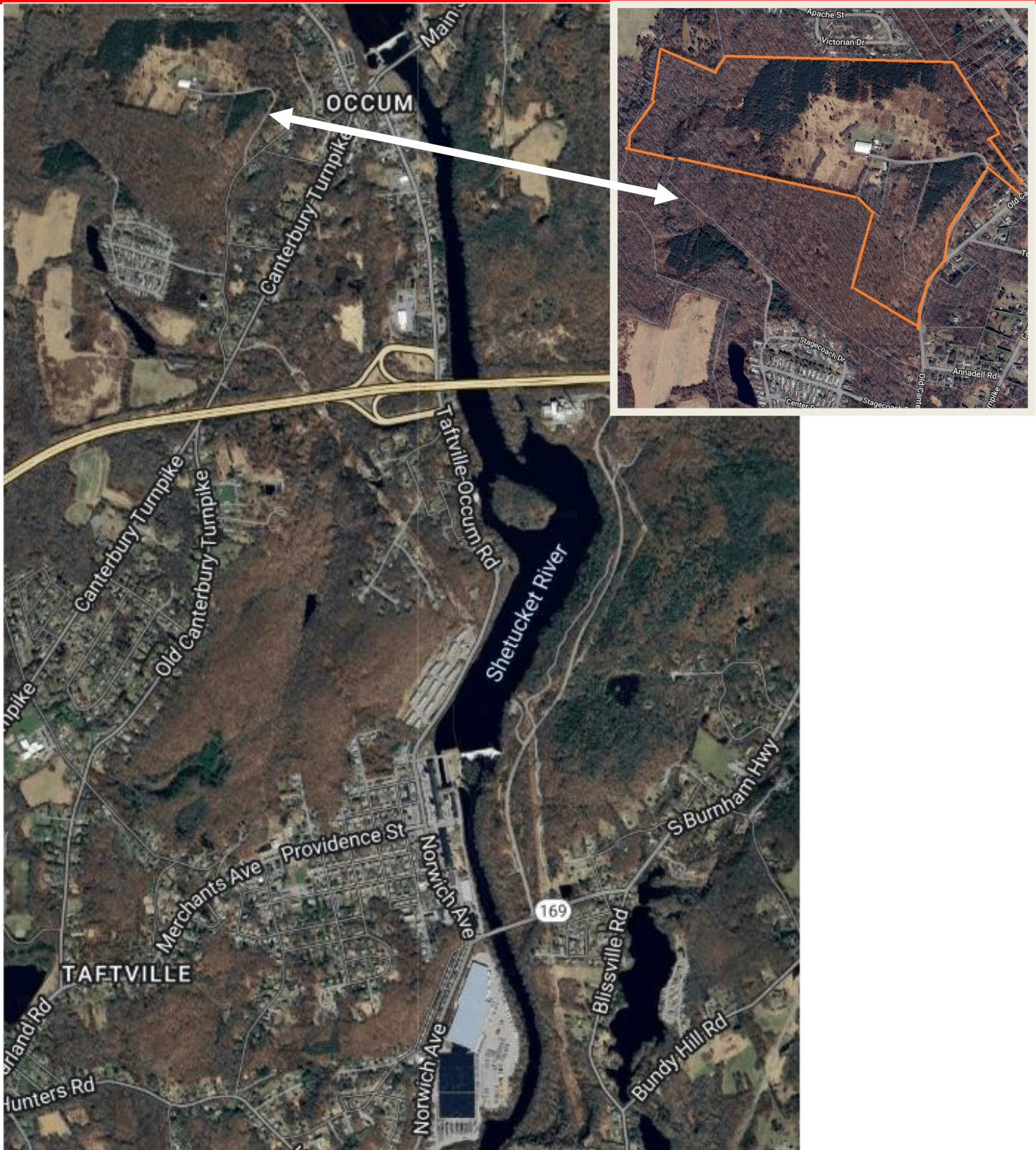
REAL ESTATE BROKERAGE & DEVELOPMENT

www.LymanRE.com

RON LYMAN

Main Office:
1160 Boston Post Rd.
Westbrook, CT 06498
Mailing Address:
73 Second Ave.
Westbrook, CT 06498
860-887-5000 Office
ronl@lymanre.com

AREA MAP



Demographics	3 MILE	5 MILES	10 MILES
Total Population	13,761	45,951	96,951
Total Households	5,811	18,874	39,038
Average Household Income	\$84,016	\$82,536	\$93,029

All information stated is from sources deemed reliable and is submitted subject to errors, omissions, changes of other terms and conditions, prior sales, financing or withdrawal without notice. Buyer/Tenant agents will be eligible