

# Freestanding Retail Space

Former Drugstore With Drive Thru

100 Conhocton St  
Corning, NY 14830

High Visibility Location at Intersection



## Offering Overview

Former drugstore property with drive thru available for sale or lease. The property is located at the intersection of Conhocton Street, E Market Street and Route 352 (E Corning Rd / Denison Pkwy) offering superior visibility and high volume traffic counts.

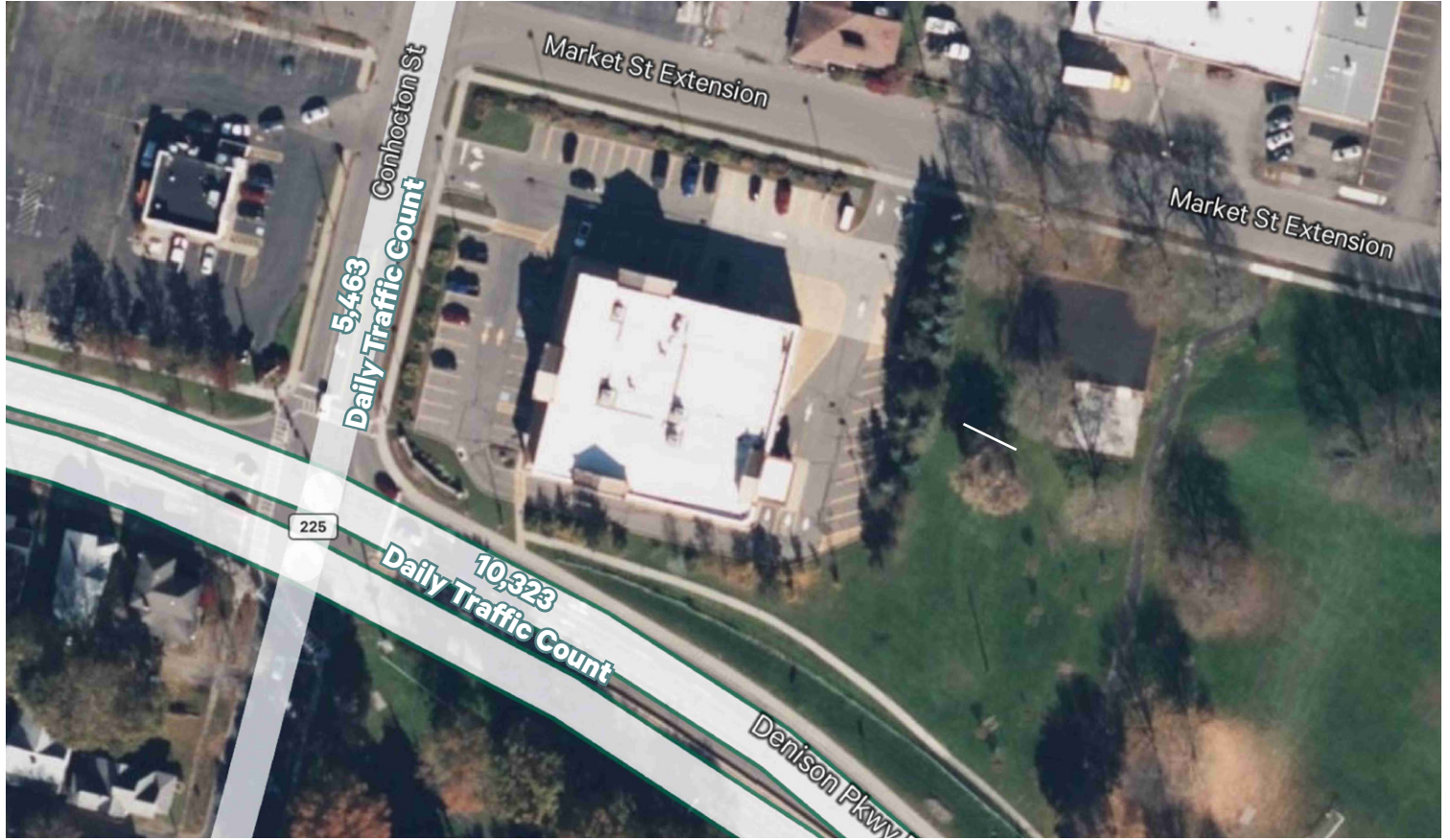
## Offering Details

- + 13,766 Square Feet On 2.1 Acres
- + High Visibility & Traffic Counts
- + Sale Price: \$3,000,000
- + Lease Rate: Negotiable

## Freestanding Retail

100 Conhocton St | Corning, NY 14830

For Sale Or Lease



## Property Overview

- + 13,766 Square Feet on 2.03 Acres
- + 2-Lane Drive Thru
- + High-Visibility Corner Location
- + High Traffic Volume
- + Multiple Points of Ingress / Egress
- + 66 Parking Spaces
- + Exterior Signage Available
- + Commercial Zoning
- + Convenient Access Via Route 352

## Contact Us

### Jaymes Keenan

+1 585 784 3638

[jaymes.keenan@cbre-rochester.com](mailto:jaymes.keenan@cbre-rochester.com)

Licensed Real Estate Salesperson

### Courtney Janto

+1 585 559 4150

[courtney.janto@cbre-rochester.com](mailto:courtney.janto@cbre-rochester.com)

Licensed Real Estate Salesperson

© 2025 CBRE Upstate NY, part of the CBRE Affiliate Network. All rights reserved. This information has been obtained from sources believed reliable, but has not been verified for accuracy or completeness. You should conduct a careful, independent investigation of the property and verify all information. Any reliance on this information is solely at your own risk. CBRE Upstate NY and the CBRE Upstate NY logo are service marks of CBRE Upstate NY. All other marks displayed on this document are the property of their respective owners, and the use of such logos does not imply any affiliation with or endorsement of CBRE Upstate NY. Photos herein are the property of their respective owners. Use of these images without the express written consent of the owner is prohibited.

### CBRE Upstate NY

120 Corporate Woods, Ste 210

Rochester, NY 14623

+1 585 240 8080

[www.cbre.com/rochester](http://www.cbre.com/rochester)

# CBRE Upstate NY

PART OF THE AFFILIATE NETWORK