

1915

THIRD AVENUE



CORNER MULTI-LEVEL OFFICE | 26,950 SF | CLOSE TO MULTIPLE HOSPITALS & MUSEUM OF THE CITY OF NEW YORK

1915 Third Avenue

Southeast Corner of East 106th Street

Available - 26,950 sf Total

Ground (inline): 4,550 sf - 10' to 16'-11" ceiling ht.	Ground Division Options:	Frontage:	Possession: Immediate
2nd Fl: 12,500 sf - 12'-7" ceiling ht.	1,040 sf / 1,650 sf	40' along 3rd Avenue	Rent: Upon Request
Lower Level: 9,900 sf - 8' to 9'11" ceiling ht.	2,900 sf / 3,510 sf	159' of 2nd Fl Visibility on 106th St	

Comments

- Formerly New York Sports Club (NYSC) — all uses considered
- Centrally located between **6**-train stations at 103rd Street and 110th Street, and close to **B63** bus along 5th Avenue
- Join co-tenant Duane Reade and area National tenants Burger King, McDonald's, T-Mobile, Popeyes Louisiana Kitchen, Cada Empanada, KFC, Duane Reade, Foot Locker, Fine Fare Supermarkets, Dunkin', Little Caesars Pizza, Chase Bank, Ponce Bank, as well as Mad for Chicken, Marcia Pharmacy, and The Museum of the City of New York, El Museo del Barrio
- Area healthcare facilities, hospitals and schools include Mount Sinai Hospital, NYC Health + Hospitals, PS 72 The Lexington Academy, The Reece School, PS 146 Anna M. Short School, Dream Charter School, East Harlem Scholars Elementary Academy, Amber Charter School, Tag Young Scholars School, Heritage School, Innovation Charter High School

By the Numbers

Retail Businesses

609

1 Mile Radius

Households

79,250

2024 est. - 1 Mile Radius

Household Income

\$98,484

2023 Average

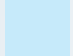
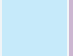

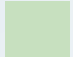


Subway Ridership

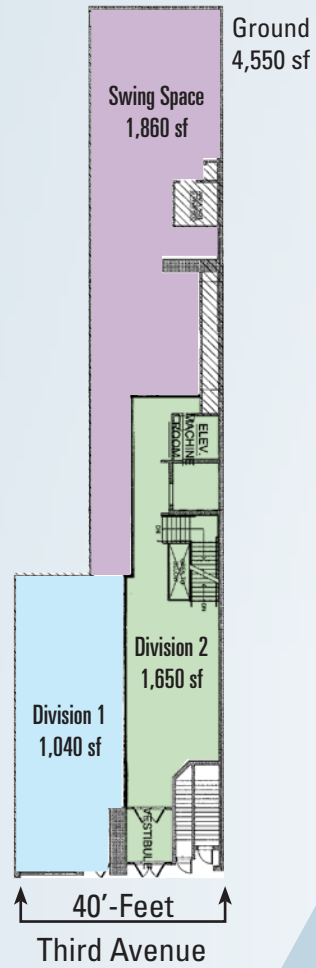
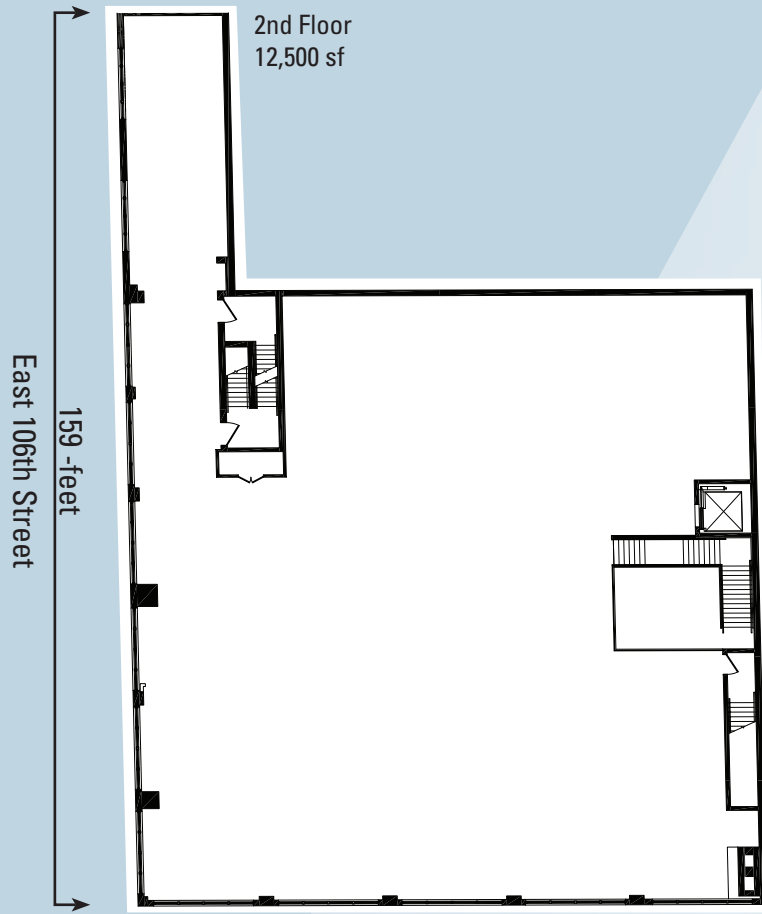
2,601,308

2023 Annual - 103rd Street Station

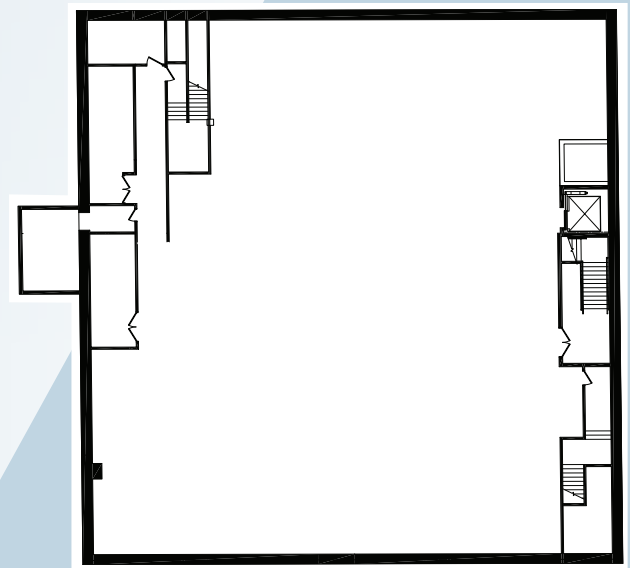
Floor Plans

Ground Floor Division Options:

 1,040 sf	  2,900 sf
 1,650 sf	  3,510 sf



Lower Level
9,900 sf



View of 2nd Floor

[Click to View Video Reel](#)



Area Map



RETAIL

- | | | |
|---------------------------------|------------------------------|-------------------------------|
| 1. SITE - 1915 Third Ave | 9. Tom Dick & Harry Sneakers | 17. T-Mobile |
| 2. Duane Reade | 10. Ponce Bank | 25. East Harlem Bottling Co. |
| 3. Snipes | 11. Marcia Pharmacy | 26. Perch |
| 4. Fine Fare Supermarkets | 12. Regine Fashion | 27. El Nuevo Caribeño |
| 5. Burger King | 13. Jack American Outlet | 28. Baked Cravings |
| 6. KFC | 14. Bakery on 3rd Café | 29. Alison |
| 7. Chase Bank | 15. McDonald's | 30. Kennedy Chicken & Burgers |
| 8. Twins Cellular | 16. Foot Locker | 31. El Museo del Barrio |
| | | |
| | | |
| | | |
| | | |
| | | |
| | | |
| | | |
| | | |

Hospitals

1. Wellspring Dental
2. Mount Sinai Hospital
3. Mount Sinai Medical Center
4. Animal care Centers of NYC.

Schools

1. PS 72 The Lexington Academy
2. The Reece School
3. PS 146 Anna M. Short School
4. DREAM Charter School
5. East Harlem Scholars Elementary
6. Amber Charter School
7. Tag Young Scholars School
8. The Heritage School



For further information and/or inspection contact:

Mark Tergesen

Partner

Licensed Assoc. Real Estate Broker
212.400.9528 | mt@absre.com

Cooper Katz

Executive Director

Licensed Real Estate Salesperson
646-439-2009 | ckatz@absre.com

Quinn Reavy

Associate

Licensed Real Estate Salesperson
212-400-6064 | qreavy@absre.com

ABS Partners Real Estate • 200 Park Avenue South, 10th Floor, New York, NY 10003 • 212.400.6060 • www.absre.com