



38,249 SF AVAILABLE FOR LEASE
880 CORPORATE WOODS PARKWAY
VERNON HILLS, IL



Property Highlights

Building Available: 38,249 SF

Office Available: Flexible

Land Area: 3.33 acres

Loading: 4 interior docks

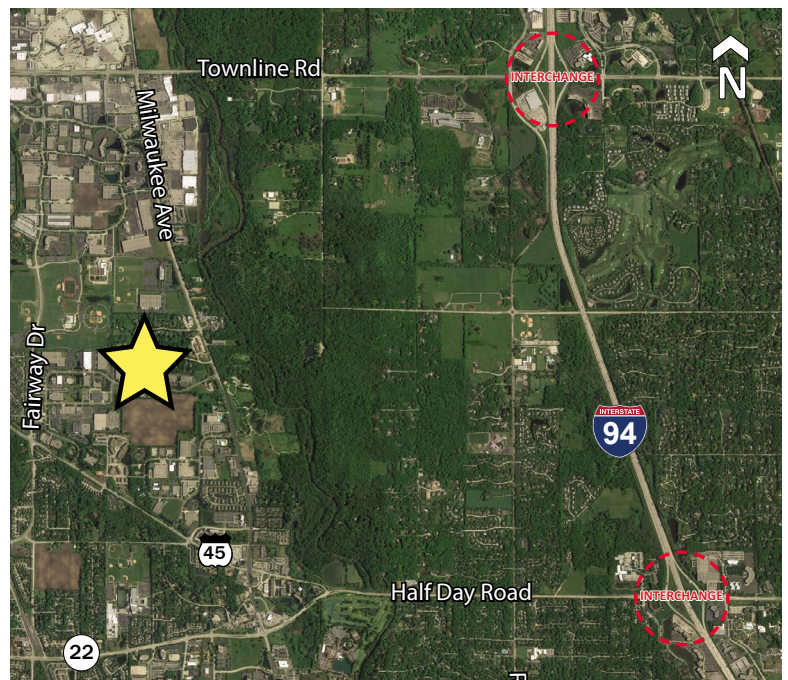
Ceiling Height: 25' (racked)

Power: 1200 amps

Parking: 49 Spaces (expandable)

Year Built: 1989

Lease Rate: Subject to Offer



Steve Stone

Managing Director
+1 847 720 1364
steve.stone@cushwake.com

Eric Fischer

Executive Managing Director
+1 847 720 1369
eric.fischer@cushwake.com

Brett Kroner

Vice Chair
+1 847 720 1367
brett.kroner@cushwake.com

Marc Samuels

Director
+1 847 720 1368
marc.samuels@cushwake.com



**CUSHMAN &
WAKEFIELD**

**38,249 SF AVAILABLE FOR LEASE
880 CORPORATE WOODS PARKWAY
VERNON HILLS, IL**



Steve Stone
Managing Director
+1 847 720 1364
steve.stone@cushwake.com

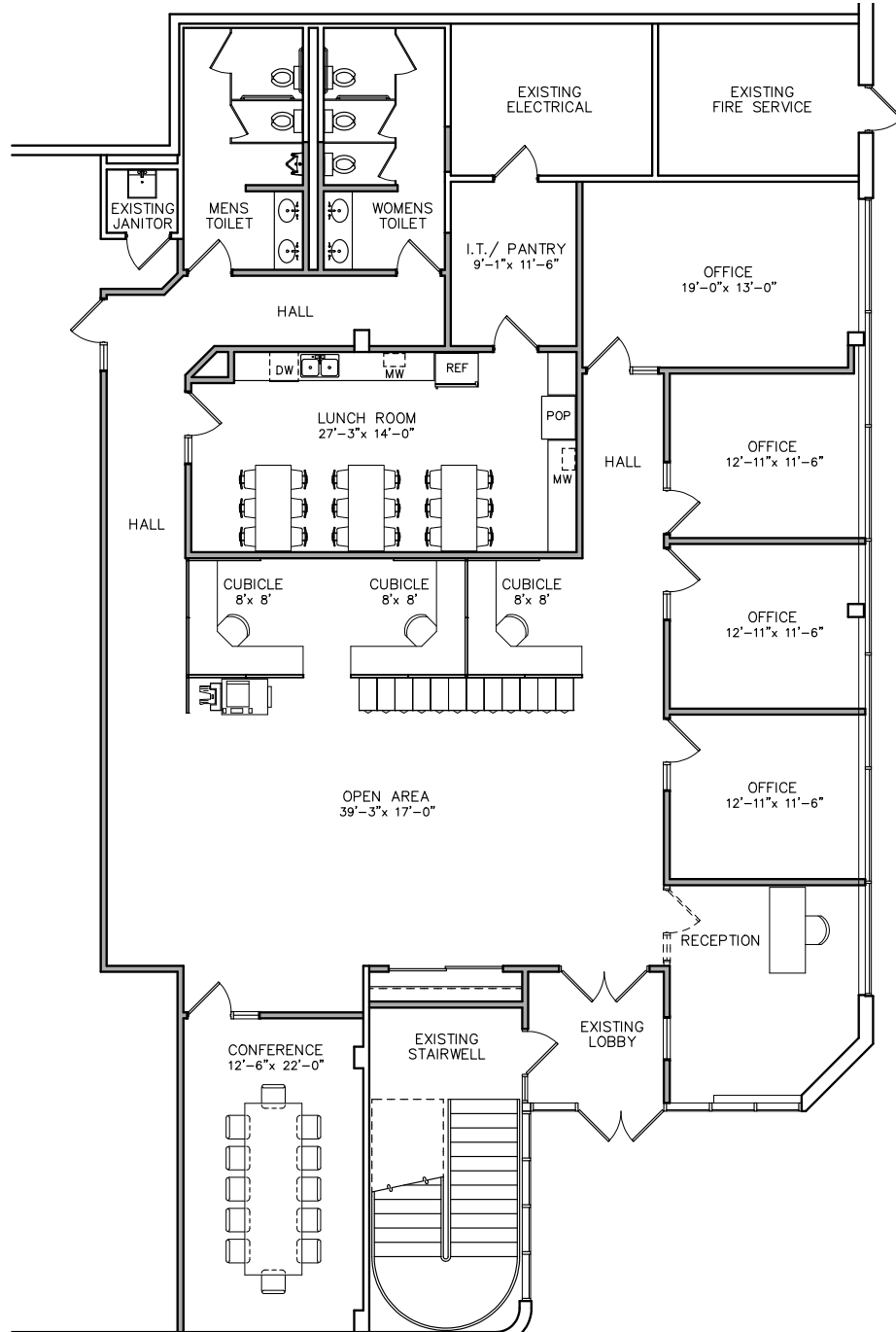
Eric Fischer
Executive Managing Director
+1 847 720 1369
eric.fischer@cushwake.com

Brett Kroner
Vice Chair
+1 847 720 1367
brett.kroner@cushwake.com

Marc Samuels
Director
+1 847 720 1368
marc.samuels@cushwake.com



OFFICE PLAN



- Potential for future building or parking expansion
- Located in the Corporate Woods Business Park
- Corporate neighbors include: Zebra Technologies, Fuji America Corp. and Mitsubishi Electric Automation
- Less than 4 miles from I-94 via Half Day Road (Route 22)

Steve Stone
Managing Director
+1 847 720 1364
steve.stone@cushwake.com

Eric Fischer
Executive Managing Director
+1 847 720 1369
eric.fischer@cushwake.com

Brett Kroner
Vice Chair
+1 847 720 1367
brett.kroner@cushwake.com

Marc Samuels
Director
+1 847 720 1368
marc.samuels@cushwake.com