

For Lease

±1,632 - 6,564 SF

Industrial / Office / Retail

Flex Space

\$0.85/sf NNN

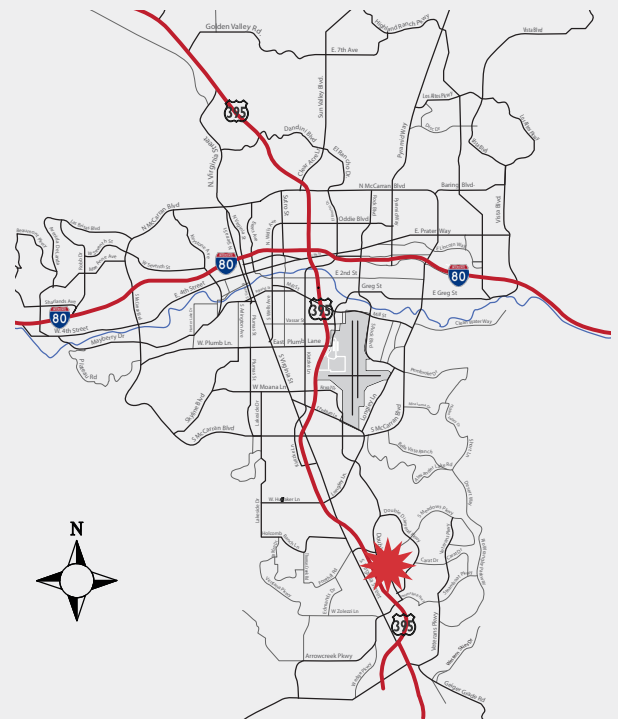


## 9475 Double R Blvd

Reno, Nevada 89521

### Property Highlights

- Office, Retail, and Warehouse Available
- Professionally Managed by Owner
- NNNs: \$0.24 PSF
- Zoned PUD in prestigious South Meadows
- Excellent amenities, access & visibility
- Convenient location minutes from I-580 & I-80
- Close to shopping, lodging and employees!



For more information:

**Dan Oster, SIOR**

+1 775 336 4665

• [doster@naialliance.com](mailto:doster@naialliance.com)

**Chase Houston**

+1 775 336 4645

• [chouston@naialliance.com](mailto:chouston@naialliance.com)

5345 Kietzke Lane, Suite 100

Reno, Nevada 89511

+1 775 336 4600

[naialliance.com](http://naialliance.com)

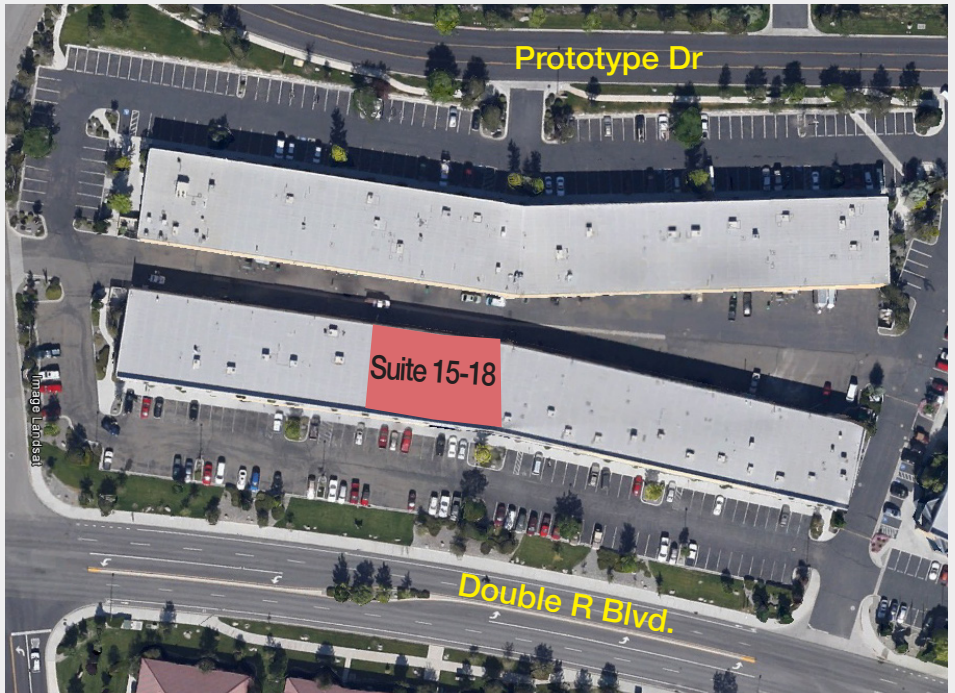
## Property Features

- Available 1,632-6,564 sf
- Divisible to 4 units
- Office, Retail, Industrial Space
- .20/1500 Sprinkler Rating
- Private Offices
- Open Workstation Area
- Private Entrances and Restroom
- Zoned PUD
- Professionally Managed

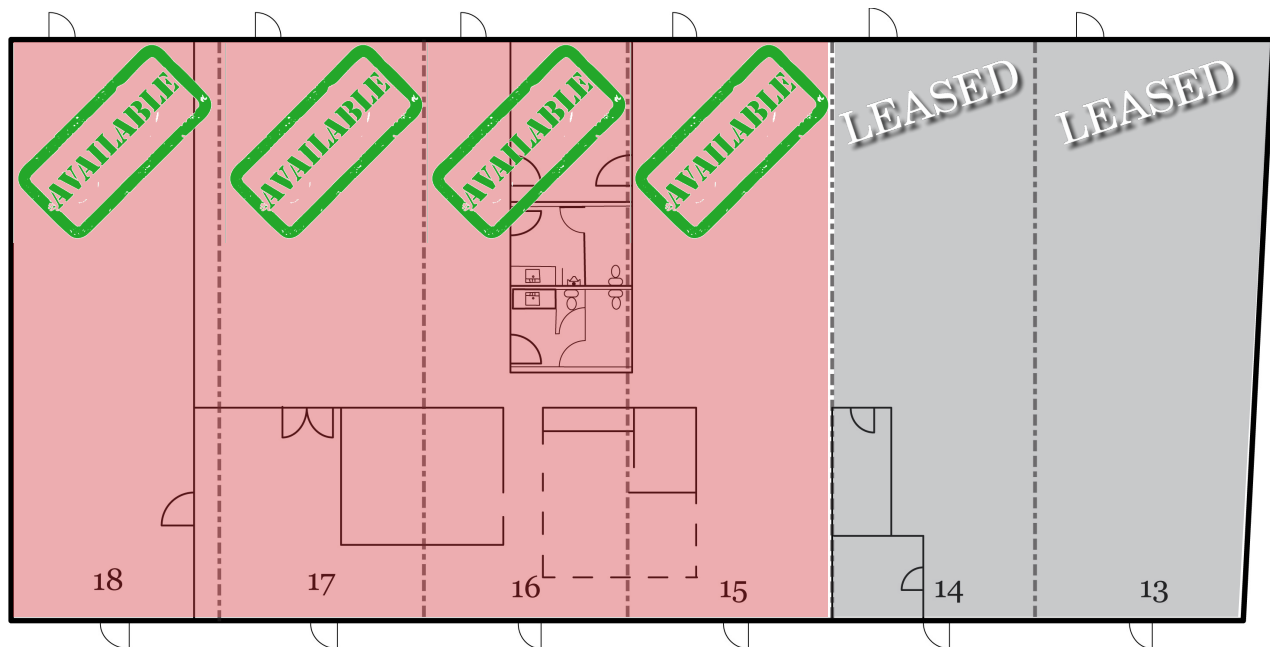
For Lease

9475 Double R Blvd  
Reno, Nevada  
\$0.85 PSF/ NNN

Divisibility	
# of Units	Square footage
1	1,632 SF
2	3,264 SF
4	6,564 SF



## FLOOR PLAN



5345 Kietzke Lane, Suite 100  
Reno, Nevada 89511  
+1 775 336 4600

[naialliance.com](http://naialliance.com)