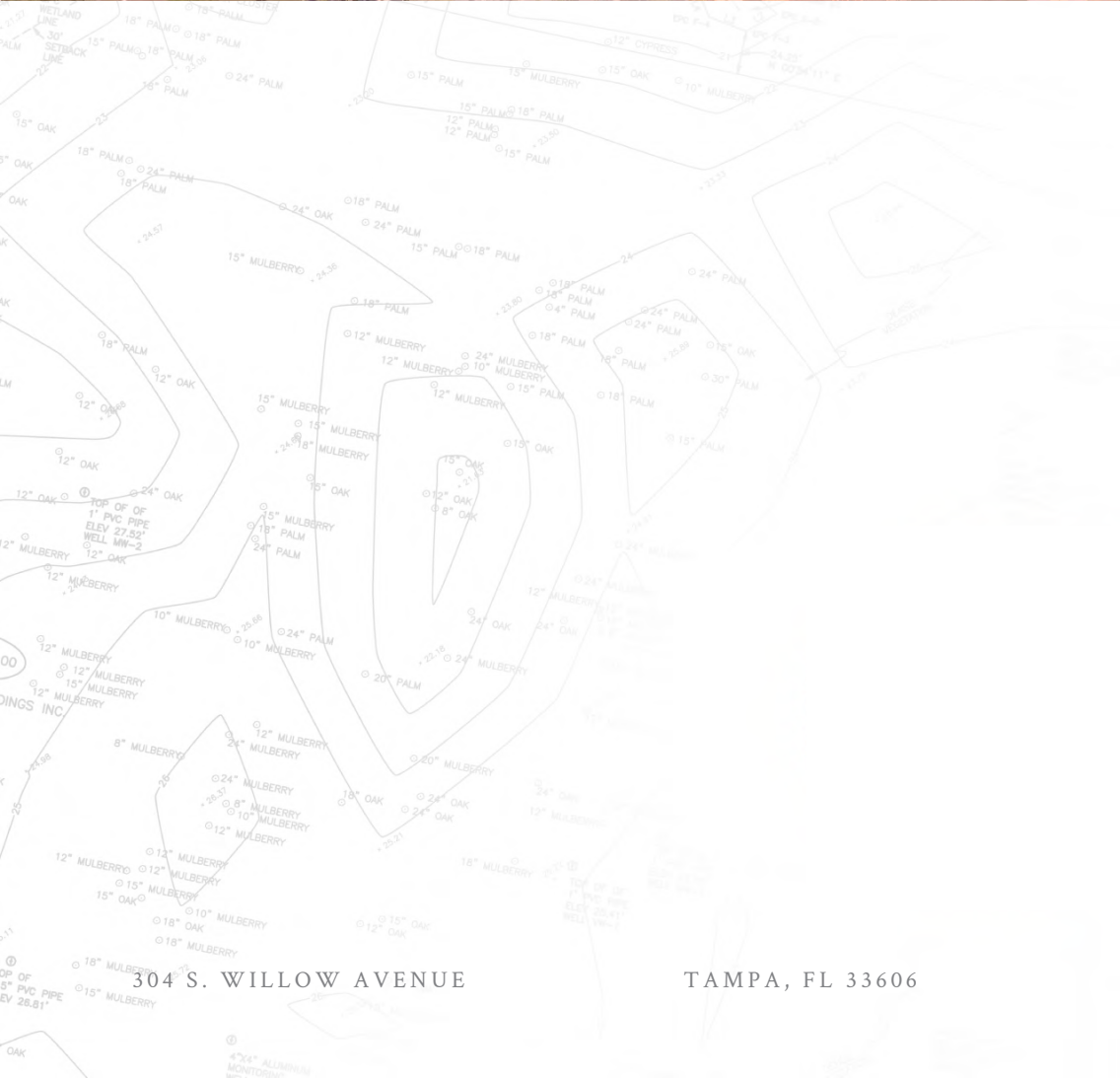
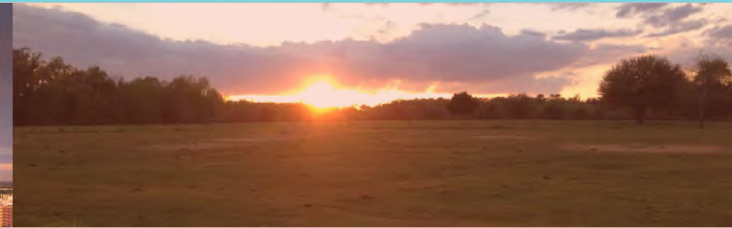
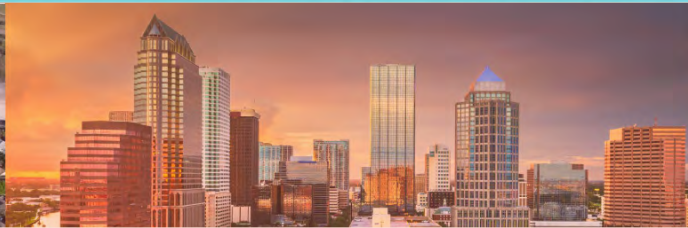


We know this land.



Eshenbaugh

LAND COMPANY



The Dirt Dog

304 S. WILLOW AVENUE

TAMPA, FL 33606

813.287.8787

www.thedirtdog.com

Additional Photos



Property Description

PROPERTY DESCRIPTION

The O'Connor Property is ideally located at a proposed major commercial intersection within the Pasadena Hill overlay in Pasco County, FL. The Future Land Use allow for the site to be rezoned for a mixed-use project incorporating potentially residential and commercial uses. The max density in the core residential area is 10 units per acre and the non-residential has potential for up to 60,000 SF of commercial uses. Utilities are available to the site and are being extended past the property in 2024.

LOCATION DESCRIPTION

The property is located at 7855 Handcart Rd in Wesley Chapel, FL. The site is within the Villages of Pasadena Hills overlay within Pasco County, FL. The site has a proposed Overpass Road extension through the middle of the property that would tie in with Fairview Heights Rd with a proposed lighted intersection. The site is 5 miles from the newly opened Overpass Road exit off I-75 and 2.5 miles from the new Publix at Epperson Ranch.

PROPERTY SIZE

49.0 Acres

ZONING

A with a FLU of VMU-2 within Pasadena Hills Overlay

PARCEL ID

Pasco Parcel ID 31-25-21-0000-00100-0010

PRICE

\$15,000,000

BROKER CONTACT INFO

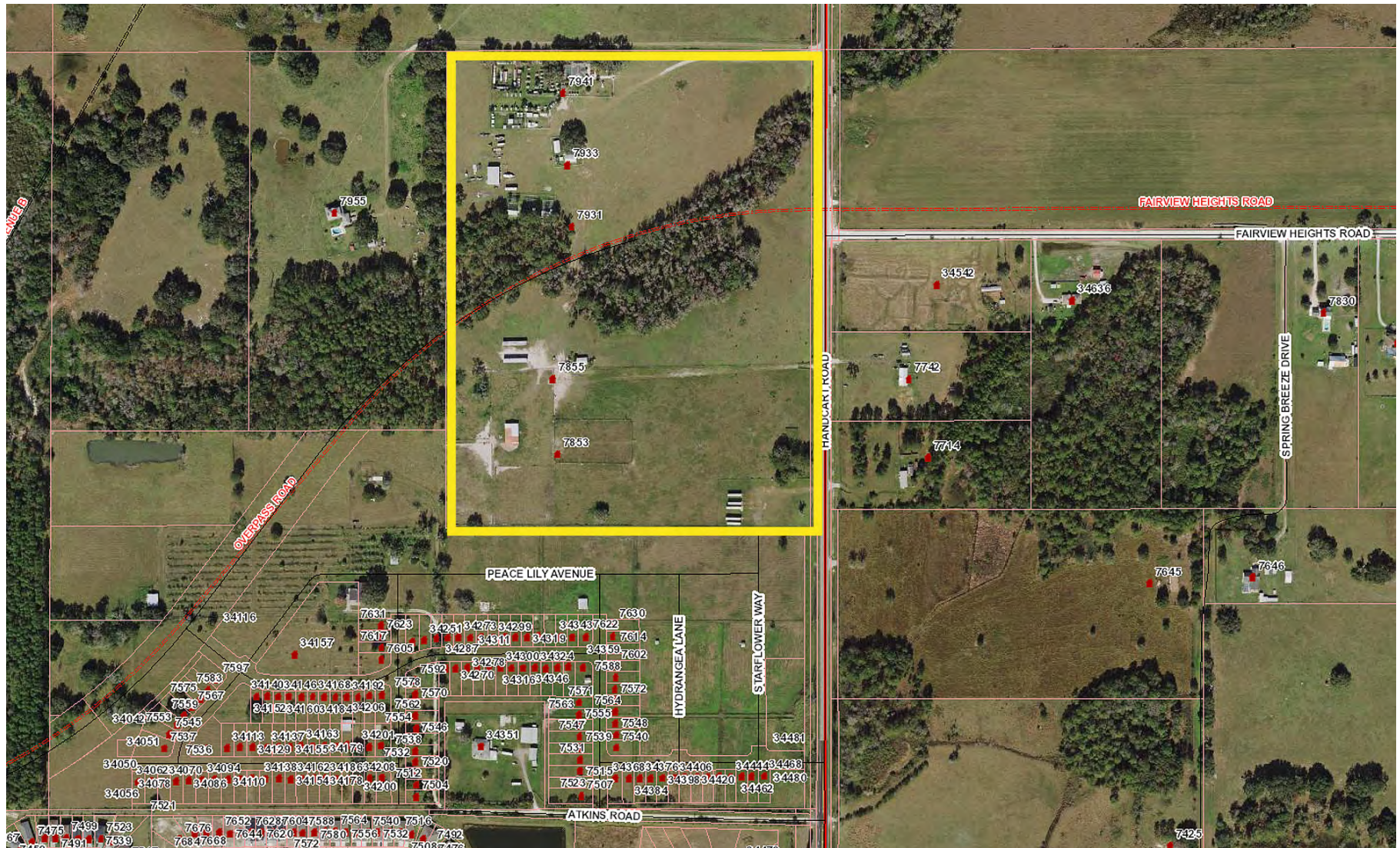
Ryan Sampson, CCIM, ALC

Principal

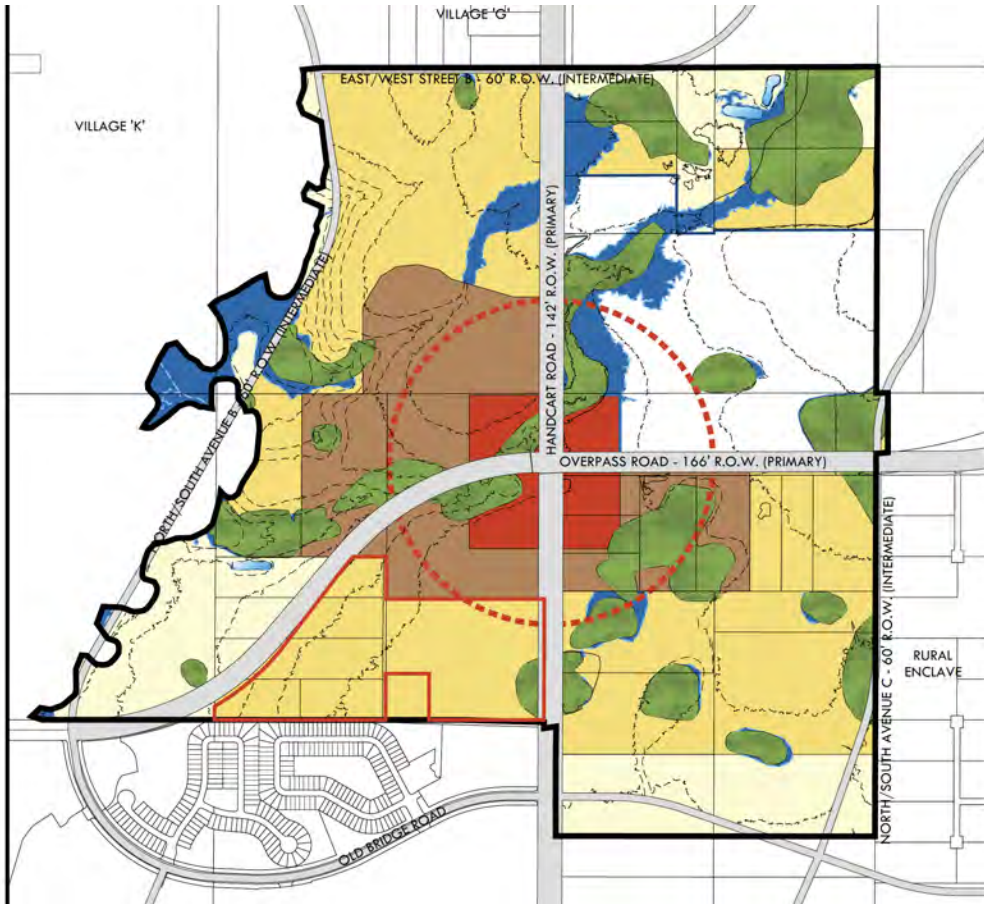
813.287.8787 x4

Ryan@TheDirtDog.com






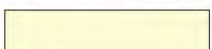
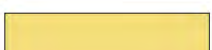




Overpass Road Extension through Property



VOPH Proposed Uses



LEGEND

-  VILLAGE BOUNDARY
-  TOPOGRAPHIC LINES
-  FLOOD ZONE
-  MAN-MADE LAKES/PONDS
-  NON-CORE RESERVE WETLANDS
-  NEIGHBORHOOD EDGE
-  NEIGHBORHOOD GENERAL
-  CORE RESIDENTIAL
-  CORE NON-RESIDENTIAL
-  SCHOOL PARCEL
-  1/4 MILE RADIUS

LAND USE NOTE:

Additional Photos



VOPH Use Category

(2) Mix of Use

Each village within the Type 2 Village Mixed Use (VMU-2) Land Use Classification shall include the following uses:

- (a) Public Spaces (Includes Parks and Open Spaces)
- (b) Village Center (Includes Community-Scale Center and Neighborhood Core Residential)
- (c) Neighborhoods (Includes General and Edge Neighborhoods and Neighborhood-Scale Centers)

The Type 2 Village Mixed Use (VMU-2) shall be developed to accommodate an areawide composite land use mix as described below⁽⁵⁾:

Uses	Density/Intensity	Minimum Land Area	Maximum Land Area
Public Spaces		15 Percent	
Village Center	Minimum 4 du ² /Developable Acre ⁽¹⁾ Maximum 10 du/Developable Acre ⁽¹⁾	15 Percent	25 Percent
Nonresidential			
Limit One Community-Scale Center per Type 2A Village	Maximum 130,000 Gross Leasable Square Feet ^{(2),(4)}		
Limit One Community-Scale Center per Type 2B Village	Maximum 80,000 Gross Leasable Square Feet ^{(2),(4)}		
Employment Uses (Includes Office) Type 2A Village only	Maximum 50,000 Gross Leasable Square Feet ⁽³⁾		
Public Uses	Maximum 0.75 Floor Area Ratio		
Neighborhood Core Residential	See Density Above		
Neighborhoods			
Neighborhood General	Maximum 5 du/Developable Residential Acre ⁽¹⁾ Maximum 0.75 Floor Area Ratio for Public Uses	40 Percent	50 Percent
Neighborhood Edge	Maximum 2 du/Developable Residential Acre ⁽¹⁾ Maximum 0.35 Floor Area Ratio for Public Uses	20 Percent	30 Percent
Limit Three Neighborhood-Scale Centers per Type 2 Village	Maximum 20,000 Gross Leasable Square Feet (Each)		

VILLAGE MIXED USE - TYPE 2 (VMU-2)

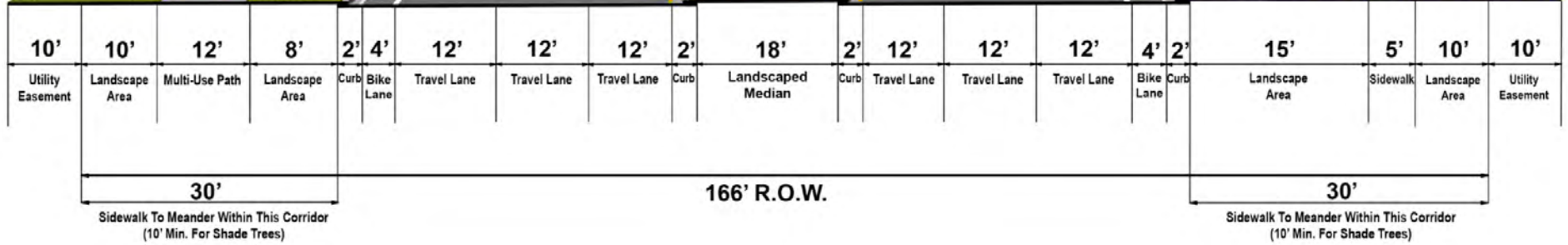
Intent: The Type 2 Village Mixed Use (VMU-2) Land Use Classification is a mixed-use land use classification that functions as an overlay to the Pasco County Future Land Use Map and permits single family and multifamily residential uses, community and neighborhood-scale commercial uses, office uses, university campuses, schools, and civic and public uses. The Type 2 Village Mixed Use (VMU-2) Land Use Classification is the second tier of "village" classifications where the uses, density, and intensity of such areas are more restricted than Type 1 Villages due to the location of the village or the size of the village. The Type 2 Village Mixed Use (VMU-2) Land Use Classification is further classified as either Type 2A Villages or Type 2B Villages dependent upon location and intended function.

The factors that limit the density and intensity of these villages, include the limitations on village-scale centers, their proximity to other existing or designated regional or village-scale centers, their proximity to the countryside area, and the size of area included in the village due to built or approved adjacent development. Commercial and/or retail uses that are designed to serve a village-scale or regional purpose are expressly prohibited. This land use classification is governed by special design standards that provide for a mix of uses within a development site or within a multiple parcel area to promote sustainable development use and form, to promote pedestrian-friendly communities, and to reduce the cost of public infra-structure.

The Type 2 Village Mixed Use Future Land Use Classification is designed to support and reinforce Pasco County's growth management vision by establishing a new development form for urban Pasco County that requires new urban development to be developed within a connected roadway network and creates a grid of existing and new streets that provide local connectivity. This represents a shift in policy direction from the County's current Comprehensive Plan and land use vision by requiring an urban street network grid to serve residential development, requiring a mix of residential uses, and allowing community and neighborhood-scale commercial and office uses to serve these areas. This new development form in concert with the required alternative transportation network is designed to reduce development pressure in other areas of the County and reduce road congestion and other community impacts associated with sprawl development.

Proposed Road through Property

PHASE 3



166' ROW 6 LANE DIVIDED W/ MULTIPURPOSE PATH

Additional Photos

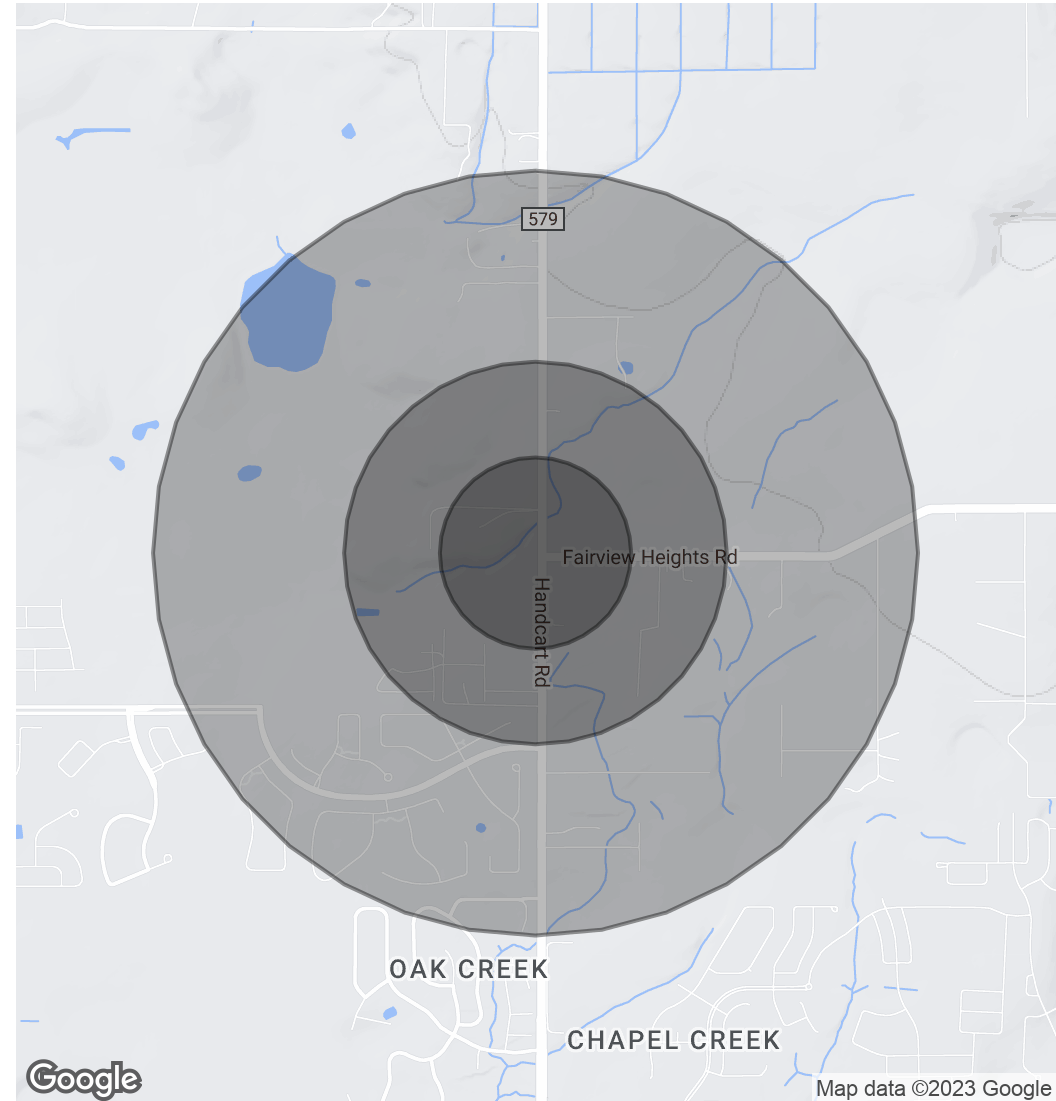


Demographics Map & Report

POPULATION	0.25 MILES	0.5 MILES	1 MILE
Total Population	69	279	1,120
Average Age	38.1	37.4	37.2
Average Age (Male)	37.2	36.7	36.6
Average Age (Female)	41.0	40.1	39.7

HOUSEHOLDS & INCOME	0.25 MILES	0.5 MILES	1 MILE
Total Households	22	93	379
# of Persons per HH	3.1	3.0	3.0
Average HH Income	\$109,565	\$101,322	\$98,365
Average House Value	\$292,097	\$271,316	\$269,534

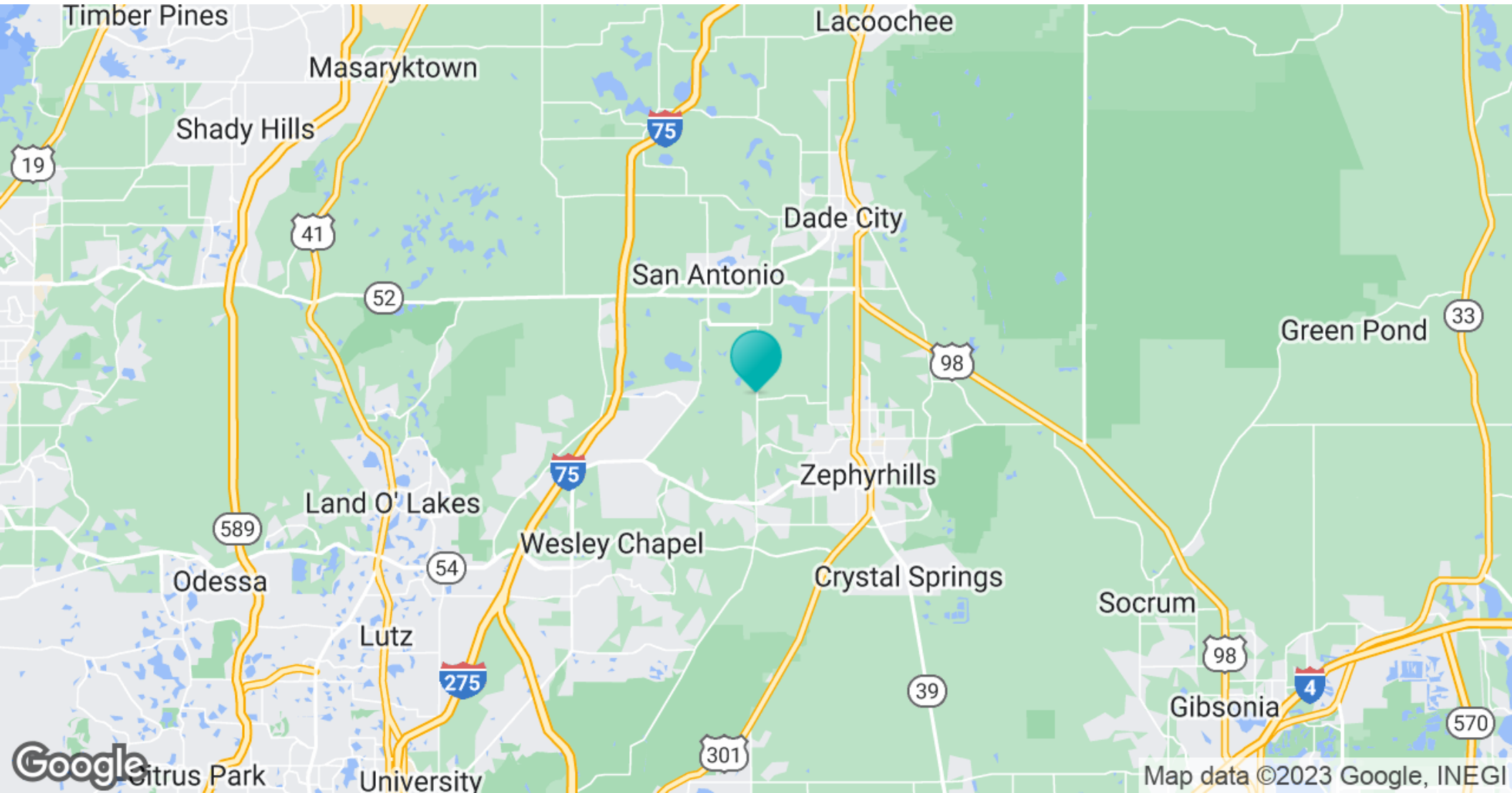
* Demographic data derived from 2020 ACS - US Census



Regional Map



Location Map



Confidentiality & Disclaimer

All materials and information received or derived from Eshenbaugh Land Company, LLC its directors, officers, agents, advisors, affiliates and/or any third party sources are provided without representation or warranty as to completeness, veracity, or accuracy, condition of the property, compliance or lack of compliance with applicable governmental requirements, developability or suitability, financial performance of the property, projected financial performance of the property for any party's intended use or any and all other matters.

Neither Eshenbaugh Land Company, LLC its directors, officers, agents, advisors, or affiliates makes any representation or warranty, express or implied, as to accuracy or completeness of the any materials or information provided, derived, or received. Materials and information from any source, whether written or verbal, that may be furnished for review are not a substitute for a party's active conduct of its own due diligence to determine these and other matters of significance to such party. Eshenbaugh Land Company, LLC will not investigate or verify any such matters or conduct due diligence for a party unless otherwise agreed in writing.

EACH PARTY SHALL CONDUCT ITS OWN INDEPENDENT INVESTIGATION AND DUE DILIGENCE.

Any party contemplating or under contract or in escrow for a transaction is urged to verify all information and to conduct their own inspections and investigations including through appropriate third party independent professionals selected by such party. All financial data should be verified by the party including by obtaining and reading applicable documents and reports and consulting appropriate independent professionals. Eshenbaugh Land Company, LLC makes no warranties and/or representations

regarding the veracity, completeness, or relevance of any financial data or assumptions. Eshenbaugh Land Company, LLC does not serve as a financial advisor to any party regarding any proposed transaction. All data and assumptions regarding financial performance, including that used for financial modeling purposes, may differ from actual data or performance. Any estimates of market rents and/or projected rents that may be provided to a party do not necessarily mean that rents can be established at or increased to that level. Parties must evaluate any applicable contractual and governmental limitations as well as market conditions, vacancy factors and other issues in order to determine rents from or for the property.

Legal questions should be discussed by the party with an attorney. Tax questions should be discussed by the party with a certified public accountant or tax attorney. Title questions should be discussed by the party with a title officer or attorney. Questions regarding the condition of the property and whether the property complies with applicable governmental requirements should be discussed by the party with appropriate engineers, architects, contractors, other consultants and governmental agencies. All properties and services are marketed by Eshenbaugh Land Company, LLC in compliance with all applicable fair housing and equal opportunity laws.

Eshenbaugh Land Company is a licensed real estate brokerage firm in Florida and William A. Eshenbaugh is the broker of record.