

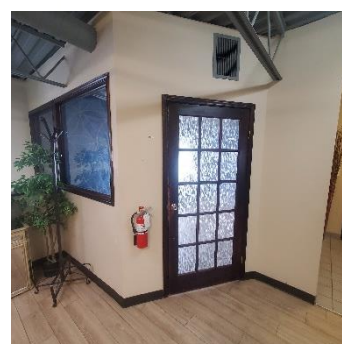
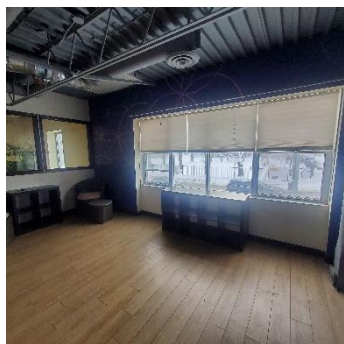
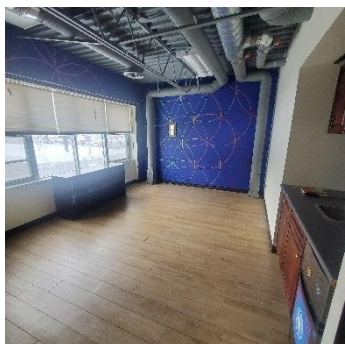
\$945.00/mo

PROPERTY TYPE	Office
BUILDING TYPE	Commerical
STOREYS	2
COMMUNITY NAME	Inglewood
PARKING TYPE	Outdoor



#3016, 1530 9 AVE SE

200sf (approx.) second floor office in the vibrant community of Inglewood. Private office on the second floor that shares a common reception, washroom and kitchen. Office is on the front of the building with windows and exposure to 9th Ave. Scramble parking in the back. Gross lease that includes use of the common areas and utilities. Easy access and egress to downtown via 9th Avenue SE. Great access to Memorial Drive, Blackfoot and Deerfoot Trails. High visibility location. Many amenities including the famous Spolumbo's Deli are within walking distance from this location. Ample access to public transit. Leasehold improvements in great condition.



www.bricksandmortar.ca

Alex McAmmond
d. 403-286-1757 p. 403-217-1755
e. alex@bricksandmortar.ca