



THE 2099 PENN EXPERIENCE

Efficient floor plates with floor-to-ceiling glass window line, an expansive rooftop terrace with views in every direction and a brand new fitness center.





EXPANSIVE ———
ROOFTOP TERRACE



MONUMENT VIEWS

Monument and park views over Pennsylvania Avenue from every floor.





BRAND NEW TENANT-ONLY FITNESS CENTER

HAS DELIVERED

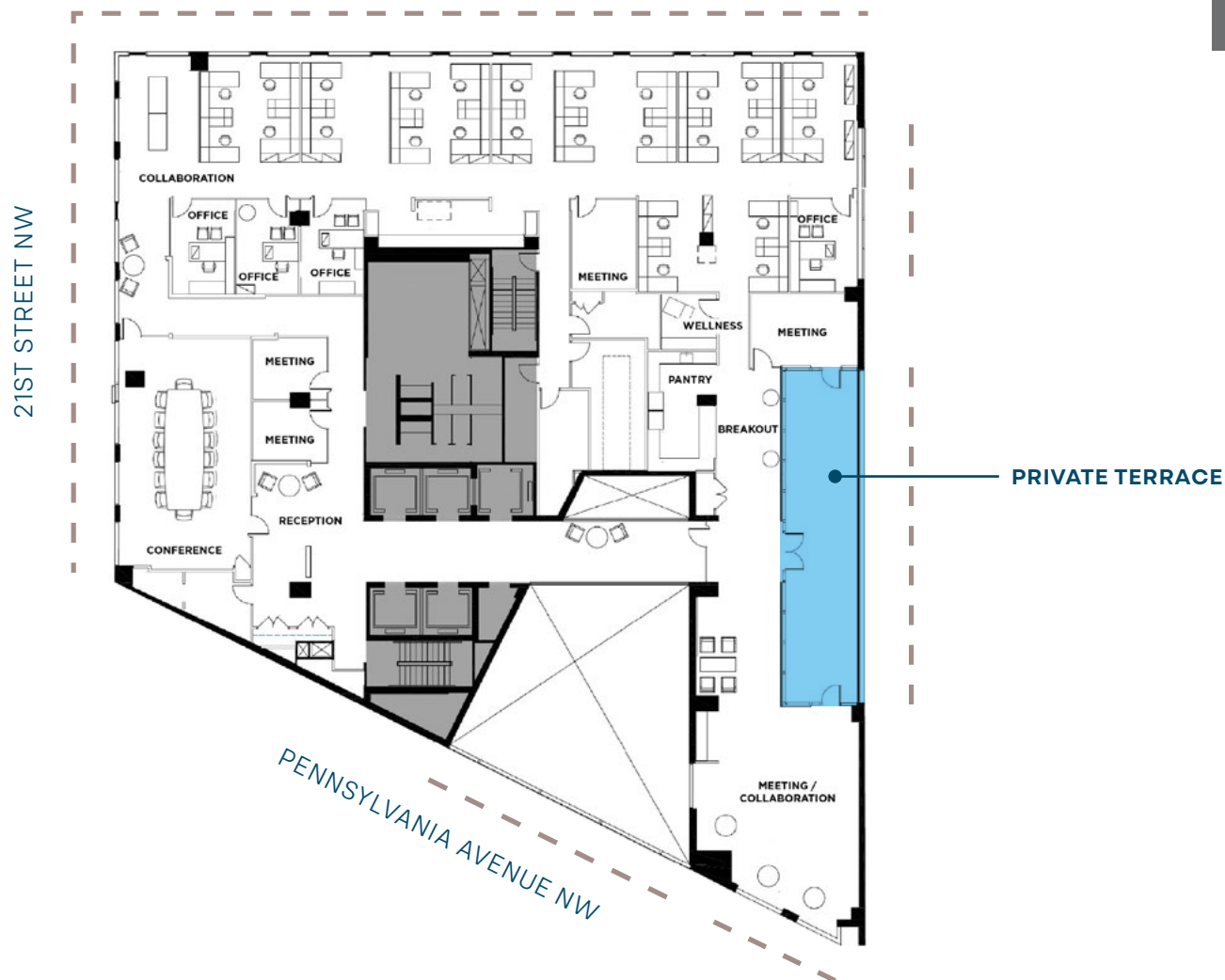
Fuel your fitness with leading fitness equipment including Peloton bikes, spa quality locker rooms with backlit mirrors, exciting high-end finishes, and so much more.



SPA QUALITY —
LOCKER ROOMS & TOWEL SERVICE

ENTIRE 2ND FLOOR | 12,183 RSF

As-Built Condition / Available Now



WINDOW LINE - - -



SCAN / CLICK

VIEW 360°
TOUR

AVISON
YOUNG

CommonWealth
partners

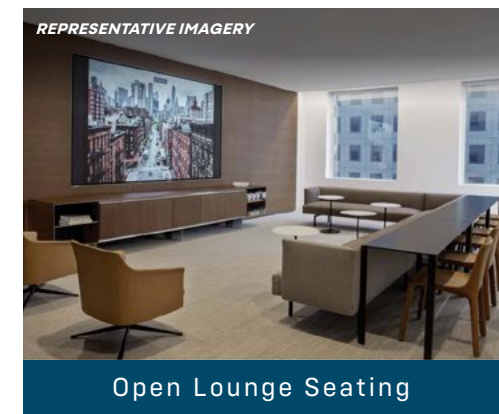
ENTIRE 2ND FLOOR | 12,183 RSF

As-Built Condition



5TH FLOOR | 3,698 RSF

Proposed Spec Suite



WINDOW LINE - - -

AVISON
YOUNG

CommonWealth
partners



WESTERN MARKET ^D★_C



OTHER NEIGHBORHOOD FAVORITES





FOR LEASING INFORMATION CONTACT

Jonathan Wellborn

202.644.8552

jonathan.wellborn@avisonyoung.com

Greg Tomasso

202.644.8551

greg.tomasso@avisonyoung.com

Lauryn Harris

202.644.8680

lauryn.harris@avisonyoung.com

Macy Parana

202.644.8678

macy.parana@avisonyoung.com

CommonWealth
partners

**AVISON
YOUNG**

2001 K STREET NW
SUITE 200 NORTH
WASHINGTON, DC, 20006
202.644.8700

© 2025. Avison Young. Information contained herein was obtained from sources deemed reliable and, while thought to be correct, have not been verified. Avison Young does not guarantee the accuracy or completeness of the information presented, nor assumes any responsibility or liability for any errors or omissions therein.