

# SUBLEASE AT THE ROSE GARDEN

*±915-18,050 RSF Class A  
Office Space Available*

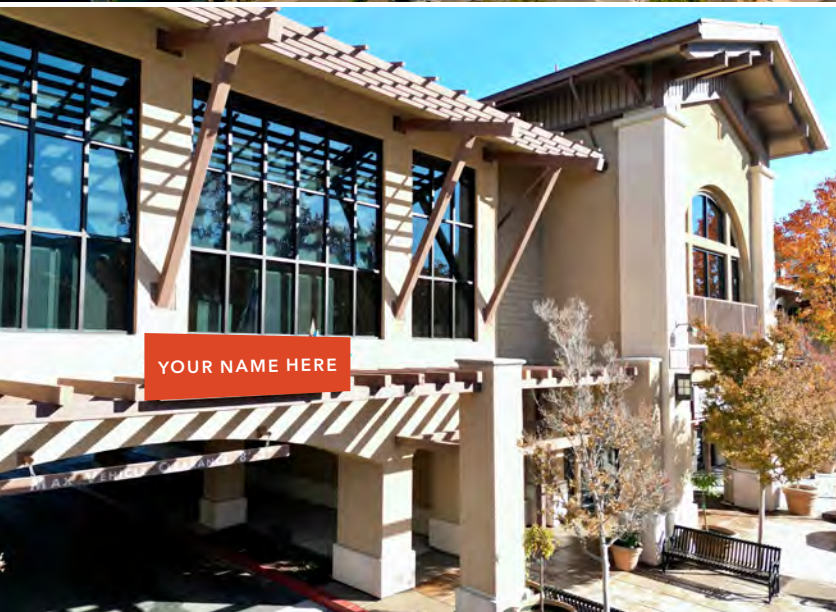
730 CAMINO RAMON SUITE 200  
DANVILLE, CA 94526

**WILL BALLOWE**  
925.389.2499  
will.ballowe@kidder.com  
LIC N° 02053125

KIDDER.COM







*Located in the high-traffic Rose Garden Shopping Center, this suite offers excellent visibility, strong foot traffic, and easy access to I-680—ideal for office or medical use.*

±18,050 SF (divisible to 915 RSF)

Newly constructed Class A office space available for Sublease or Direct leases

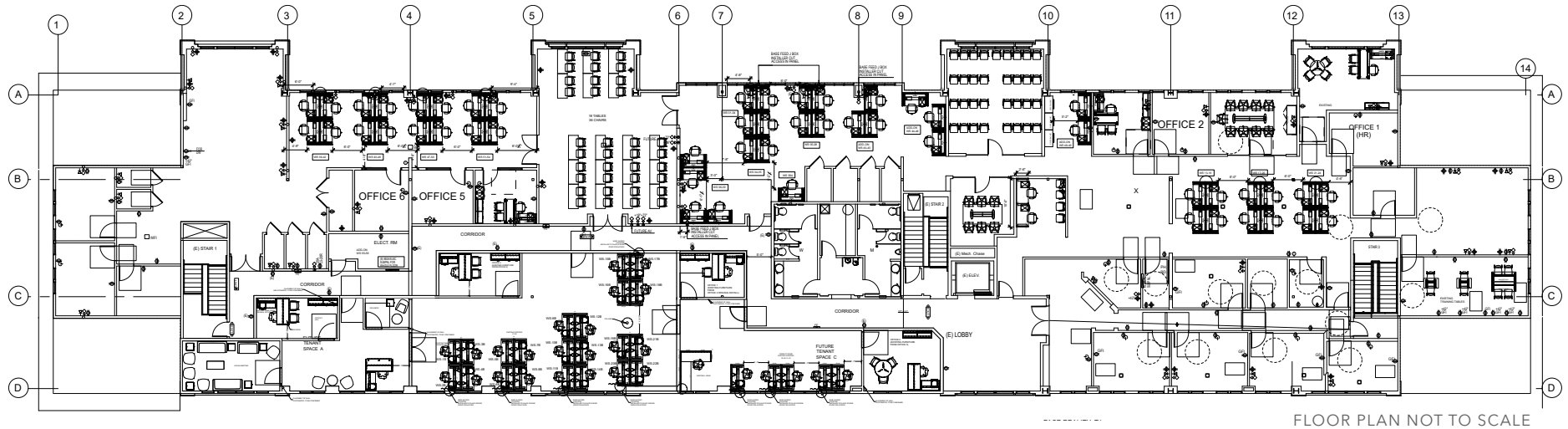
Available suite consists of clinic area, mix of private offices, conference rooms, multiple break rooms, and open workspace

Available January 1, 2026

Master lease expiration on March 31, 2029

Rose Garden Shopping Center - home to Starbucks, Esin Restaurant & Bar, Amici's Pizza, Community Bank of the Bay, etc

## SUITE 200 FLOOR PLAN



***+18,050 SF***

AVAILABLE (DIVISIBLE TO 915 RSF)

***1/1/26***

AVAILABLE

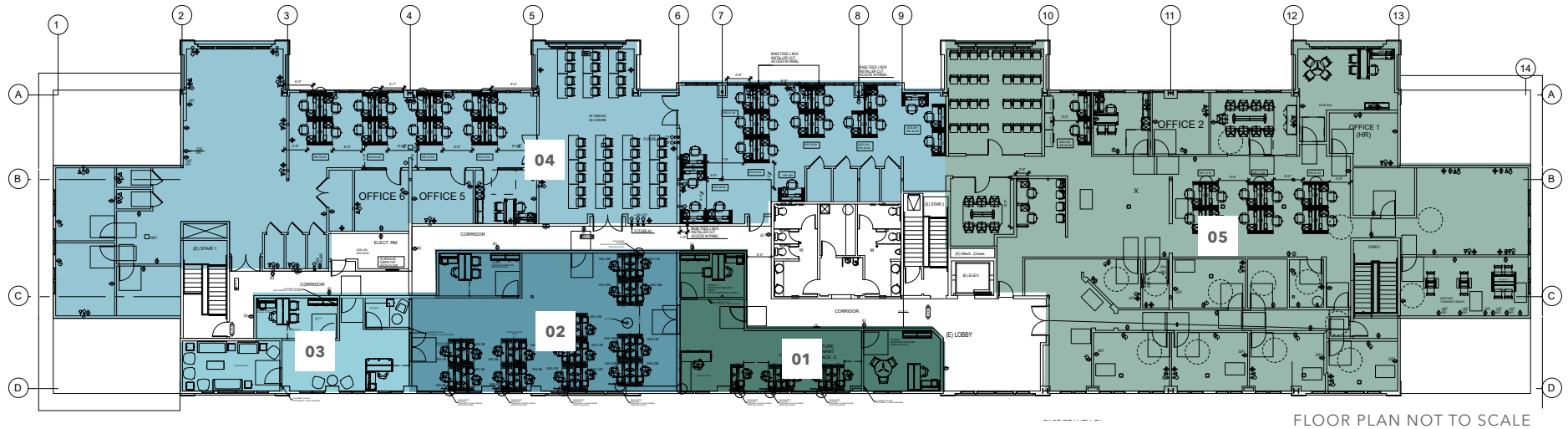
**WILL BALLOWE** 925.389.2499 | [will.ballowe@kidder.com](mailto:will.ballowe@kidder.com) | LIC N° 02053125

**KIDDER.COM**

This information supplied herein is from sources we deem reliable. It is provided without any representation, warranty, or guarantee, expressed or implied as to its accuracy. Prospective Buyer or Tenant should conduct an independent investigation and verification of all matters deemed to be material, including, but not limited to, statements of income and expenses. Consult your attorney, accountant, or other professional advisor. All Kidder Mathews designs are the sole property of Kidder Mathews. Branded materials and layouts are not authorized for use by any other firm or person.



## SUITE 200 DIVISION OPTIONS



***+18,050 SF***

AVAILABLE (DIVISIBLE TO 915 RSF)

***FIVE***

AVAILABLE DIVISIONS

WILL BALLOWE 925.389.2499 | will.ballowe@kidder.com | LIC N° 02053125

KIDDER.COM

This information supplied herein is from sources we deem reliable. It is provided without any representation, warranty, or guarantee, expressed or implied as to its accuracy. Prospective Buyer or Tenant should conduct an independent investigation and verification of all matters deemed to be material, including, but not limited to, statements of income and expenses. Consult your attorney, accountant, or other professional advisor. All Kidder Mathews designs are the sole property of Kidder Mathews. Branded materials and layouts are not authorized for use by any other firm or person.





