

SUBLEASE

3 Brand New Construction Suites Available for Sublease

5220 W WASHINGTON BLVD
LOS ANGELES, CA

SPACE PROFILE

6,000 SF

Total SF Available
(Located on 2nd Floor)

- Suite A +/- 2,000 SF
- Suite B +/- 2,500 SF
- Suite C +/- 1,500 SF

\$3.50 MG

Rental Rate

Immediate

Availability

3-10 Years

Term

2.5/1,000 SF

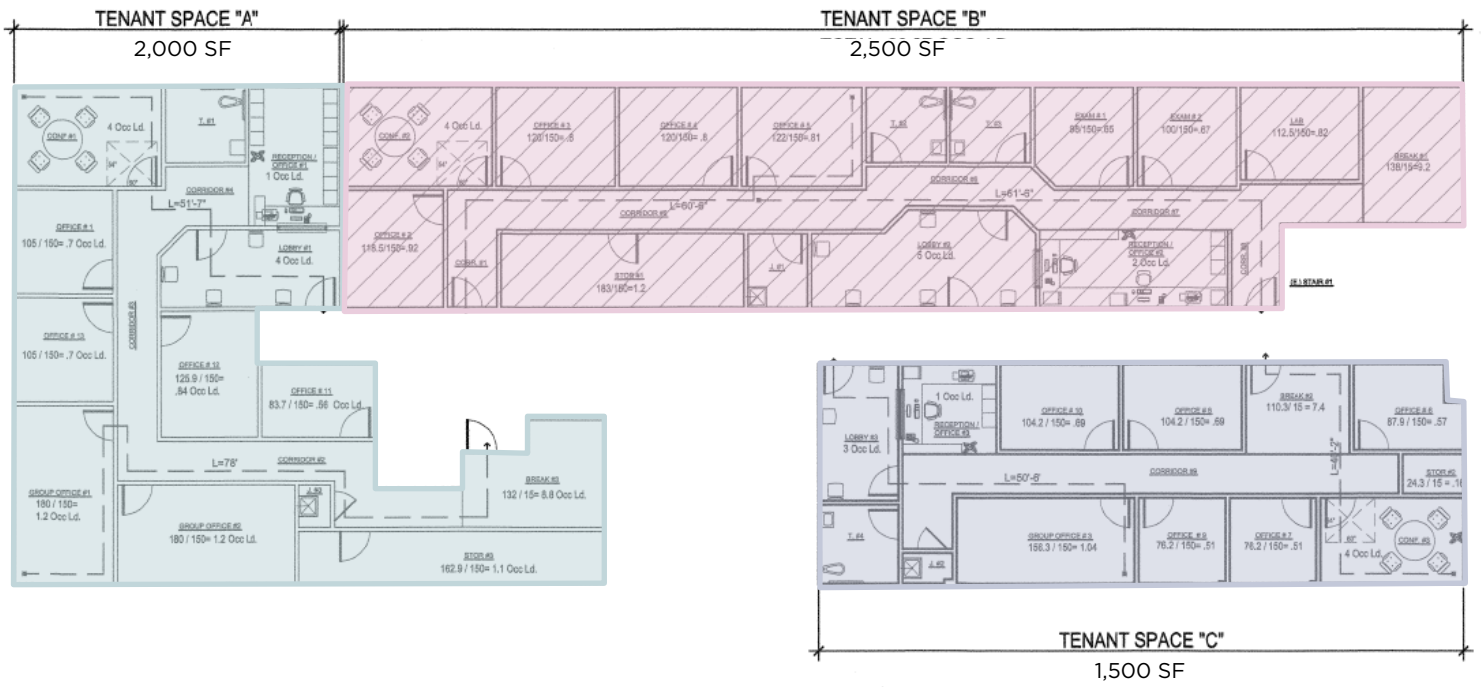
Parking

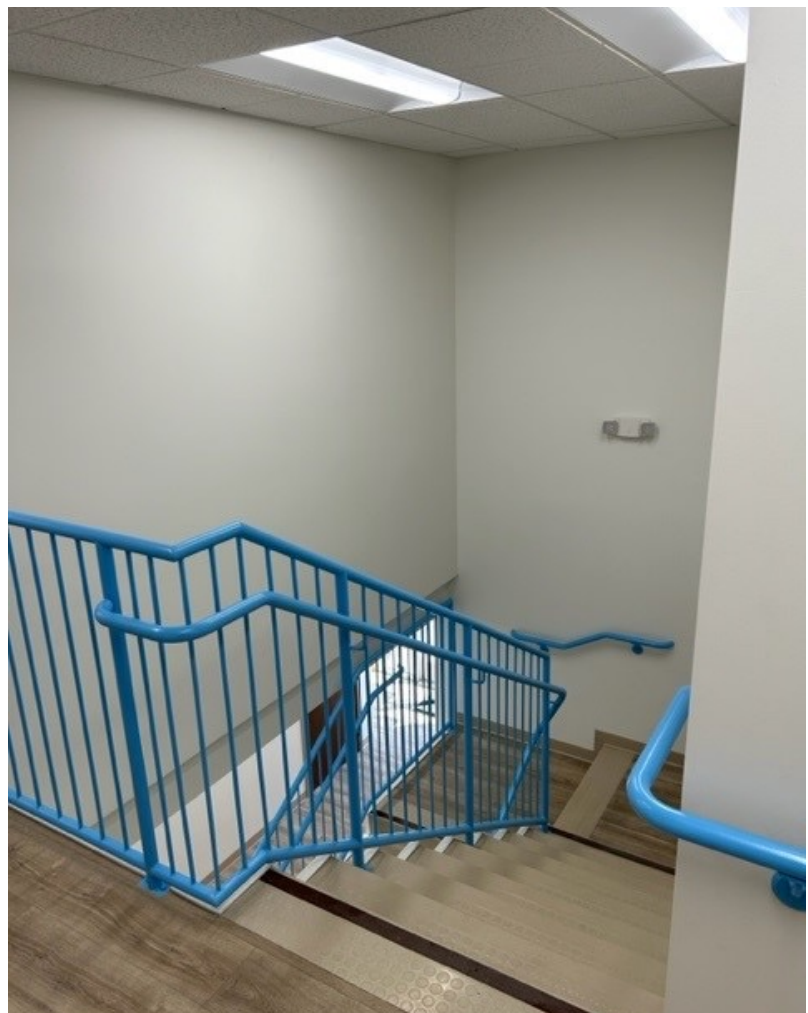
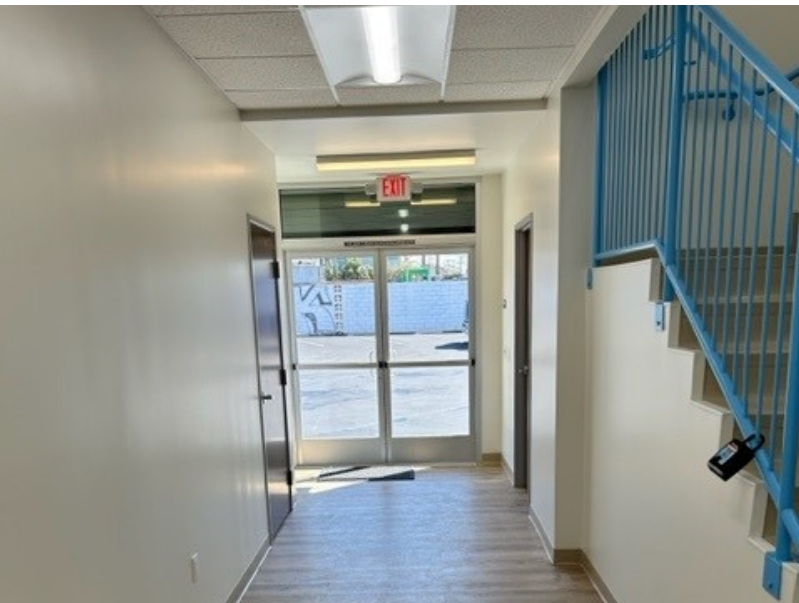
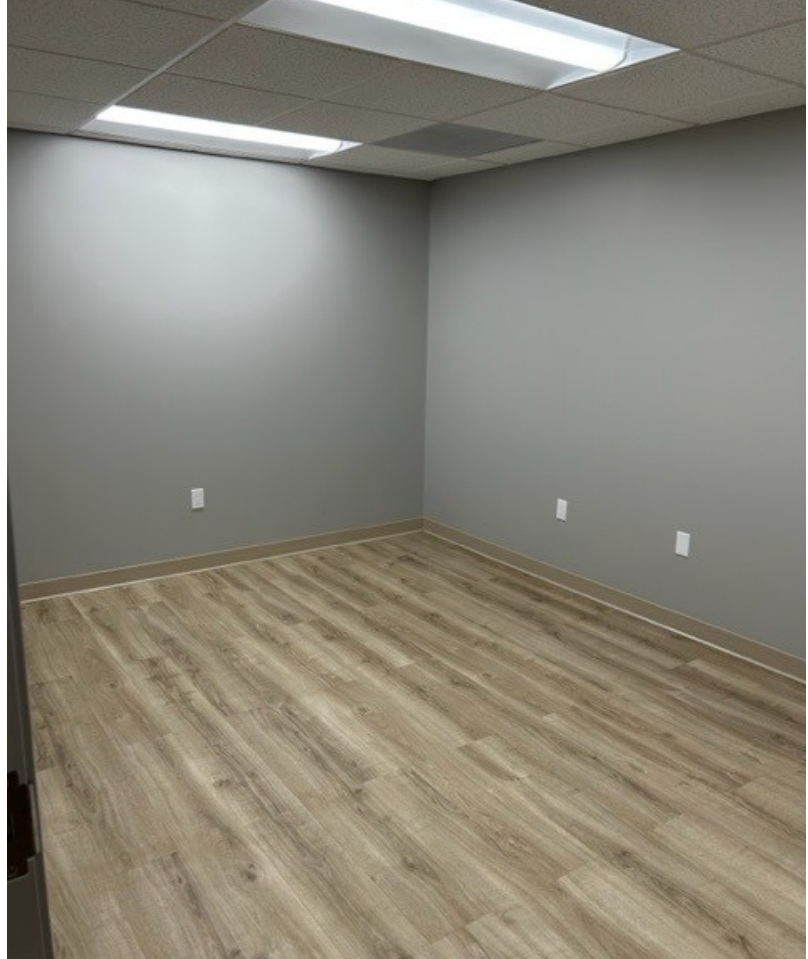
KEY HIGHLIGHTS

- Improvements and Finishes are Brand New
- Great for Ancillary Medical Use/Educational Use/Office Use
- Entire 2nd Floor Available
- Three (3) individual suites available
- All suites have Kitchenettes with Running Water
- All suites have Private Bathrooms
- Energy Saving Lighting and Lighting Controls
- State of the art HVAC System and Controls
- Common area Bathrooms
- Common area Water Fountain
- Parking Attendant on Premises
- Security Guard on Premises
- Common Server Room
- Gated parking
- Unfurnished

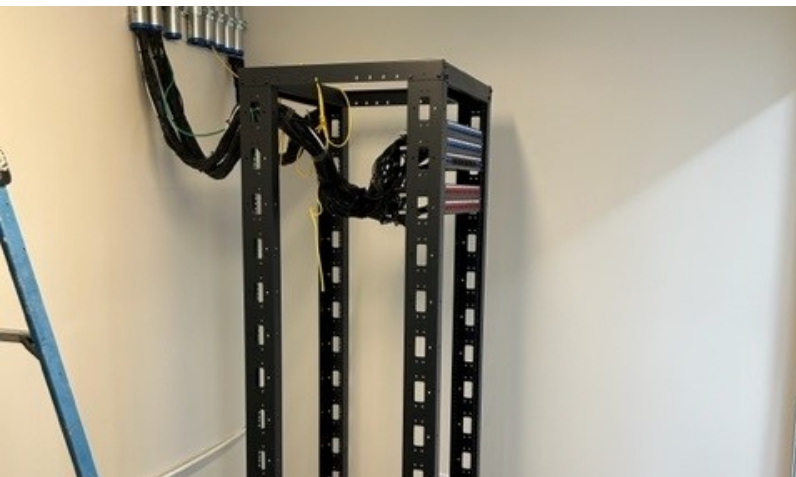


FLOORPLAN





5220 W WASHINGTON BLVD



Michael Shuken

+1 213 553 3839

Mshuken@savills.us

License #01407558

The information contained in this communication has been obtained from a variety of sources believed to be reliable but has not been verified. NO WARRANTY OR REPRESENTATION, EXPRESS OR IMPLIED, IS MADE AS TO THE CONDITION OF THE PROPERTY OR ACCURACY OR COMPLETENESS OF THE INFORMATION CONTAINED HEREIN AND SAME IS SUBMITTED SUBJECT TO ERRORS, OMISSIONS, CHANGE OF PRICE, RENTAL OR OTHER CONDITIONS, WITHDRAWAL WITHOUT NOTICE AND TO ANY SPECIFIC CONDITIONS IMPOSED BY THE PROPERTY OWNER OR LESSOR.

savills.us

