



## 185 BROADWAY, BROOKLYN, NY

Northeast Corner of Driggs Avenue, Williamsburg

**NEWLY BUILT AND FURNISHED FULL FLOOR - 13,500 SF - DIVISIBLE**



## Available

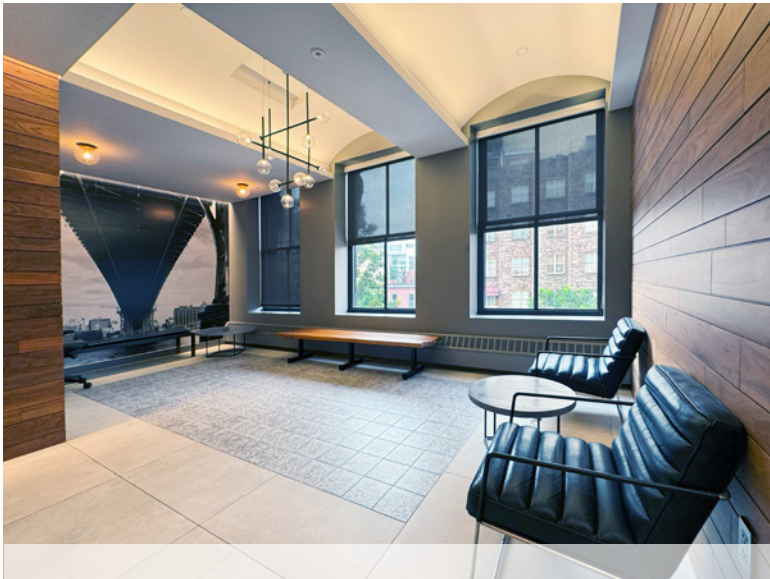
Entire 3rd Floor: 13,500 rsf  
(Divisible to 6,500 rsf)

Possession: Immediate

Rent: Upon Request

## Comments

- High-end finishes with wood and brick accents in floor lobby and space entry area
- Build-out includes (2) Conference rooms, (17) glass-front windowed offices, (18) workstations
- Beautifully appointed kitchen with built-in seating area, (7) restrooms - (1) ADA accessible
- Close proximity to Marcy Avenue  bus stop directly opposite building on Driggs Avenue; and walking distance to Driggs Ave/N 7th St  subway



View of 3rd Floor Lobby



Floor Plan not to scale, for display purposes only



Space Entry Area



Glass-Enclosed Large Conference Room



Corner Conference/Meeting Room



Glass-Front Offices



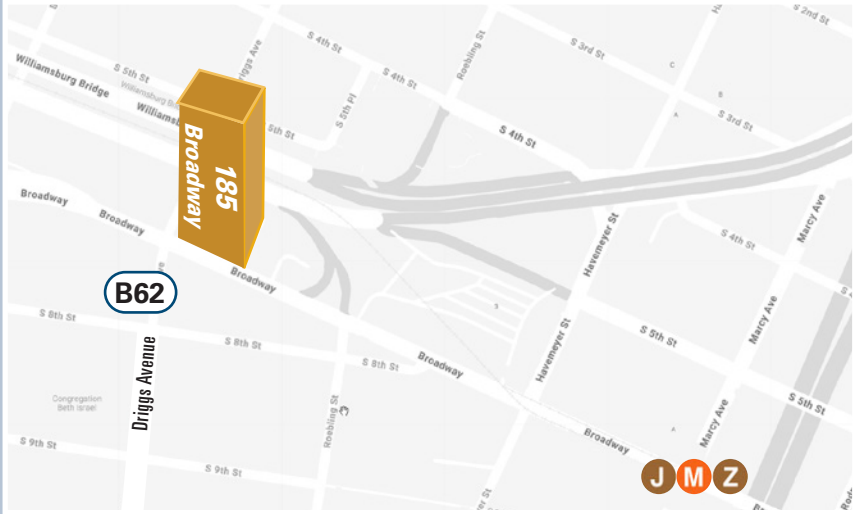
Windowed Private Workspaces



Beautifully Appointed Kitchen & Seating Area



Open Area Workstations





For further information and/or inspection contact exclusive broker:

**Ben Waller**

Partner

212.400.9515

[bwaller@absre.com](mailto:bwaller@absre.com)

**Mark Tergesen**

Partner

212.400.9528

[mt@absre.com](mailto:mt@absre.com)

ABS Partners Real Estate • 200 Park Avenue South, 10th Floor, New York, NY 10003 • 212.400.6060 • [www.absre.com](http://www.absre.com)