

Burger

& COMPANY

FOR SALE/LEASE

2020 E Grand River Ave
East Building
Howell, Michigan
6,300 Square Feet



- Excellent Visibility Along Busy Grand River with Abundant Parking
- Possible Signage
- Many Possible “uses” with C-Commercial Zoning
- Property Can be Purchased Separately or Together with the Neighboring Building Immediately to the West For a Total of 14,540 Sq. Ft.
- Call John O’Brien for Details

Burger & Company

248.536.2888

www.burgercollc.com

38345 W. 10 Mile Road, Suite 100
Farmington Hills, MI 48335

John O’Brien

Principal

Cell: 248.342.8383

john@burgercollc.com

Information contained herein is deemed to be reliable but is not guaranteed and may be withdrawn at any time.

FOR SALE/LEASE

2020 E Grand River Ave
East Building
Howell, MI



BUILDING SPECIFICATIONS

Zoning	C-Commercial	Total Building Square Feet	6,300 SF
Lot Size	0.35 Acres	Office Square Feet	6,300 SF

Traffic Count	20,845 Cars Per Day
----------------------	---------------------

Description

- Excellent Visibility Along Busy Grand River with Abundant Parking
- Possible Signage
- Many Possible “uses” with C-Commercial Zoning
- Property Can be Purchased Separately or Together with the Neighboring Building Immediately to the West For a Total of 14,540 Sq. Ft.
- Call John O’Brien for Details

Sale Price	\$756,000.00 (\$120.00 PSF)
Lease Rate	\$13.00 PSF
Lease Type	NNN



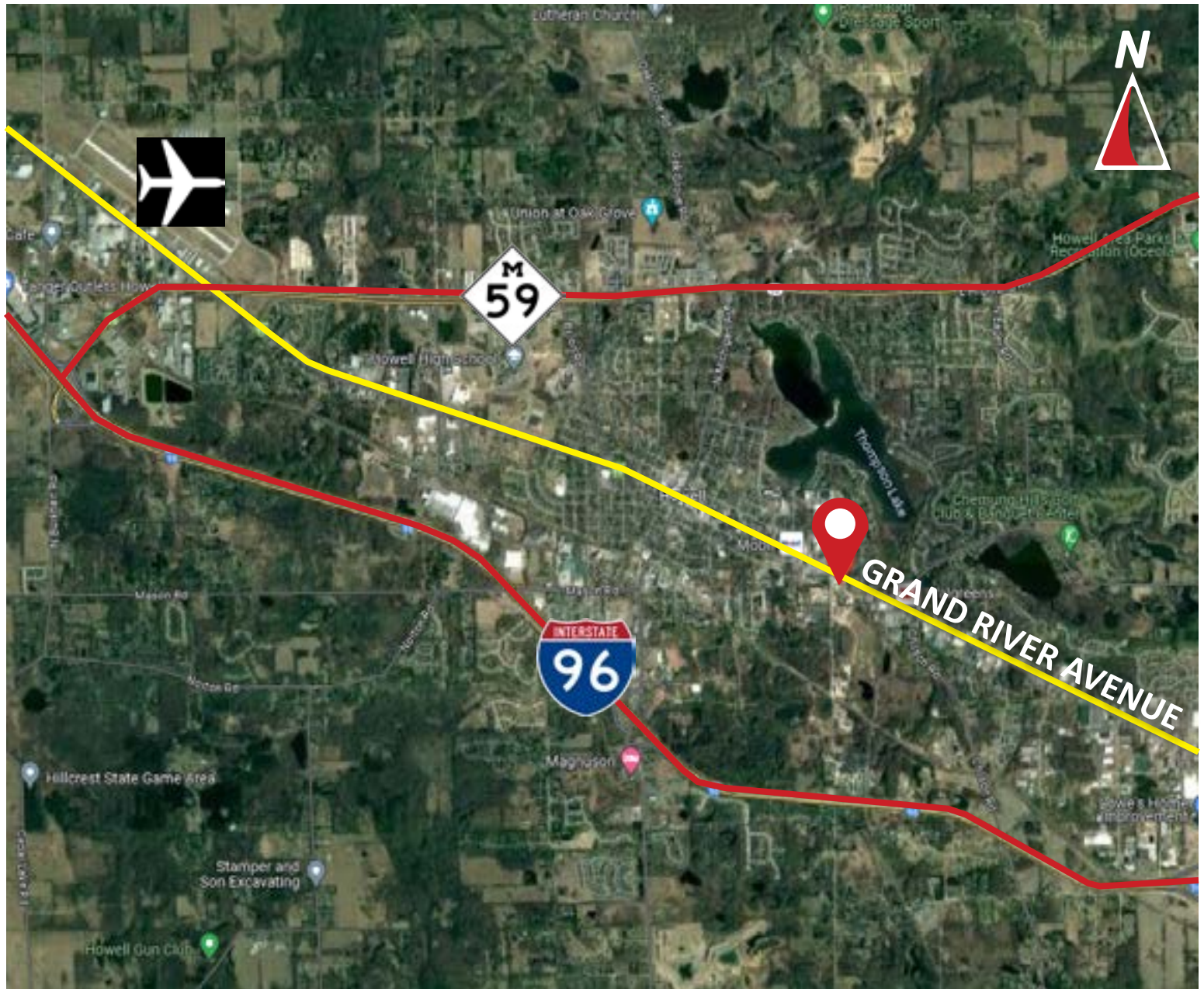
John O’Brien
Principal
Cell: 248.342.8383
john@burgercollc.com

248.536.2888
www.burgercollc.com
38345 W. 10 Mile Road, Suite 100
Farmington Hills, MI 48335

Information contained herein is deemed to be reliable but is not guaranteed and may be withdrawn at any time.

FOR SALE/LEASE

2020 E Grand River Ave
East Building
Howell, MI



Burger

& COMPANY

John O'Brien
Principal
Cell: 248.342.8383
john@burgercollc.com

248.536.2888
www.burgercollc.com
38345 W. 10 Mile Road, Suite 100
Farmington Hills, MI 48335

Information contained herein is deemed to be reliable but is not guaranteed and may be withdrawn at any time.