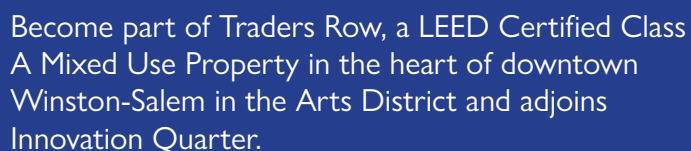


147 S. CHERRY STREET, SUITE 200 | WINSTON-SALEM, NC 27101 | P 336.722.1986 | F 336.723.3173 | MERIDIANREALTY.COM

Class A Office

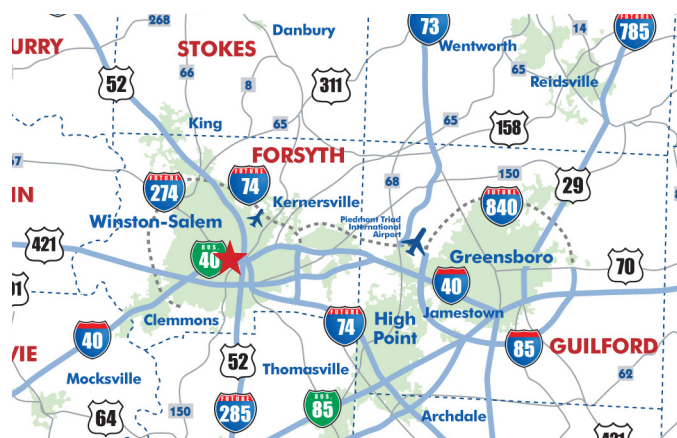
540 N. Trade Street

Winston-Salem, NC 27101



Available on the first and second floors is 12,234± SF of office space. First floor is 2,199± SF. Second floor is 10,035± SF. Can be leased separately.

Parking on street, and in adjacent deck.



For more information:

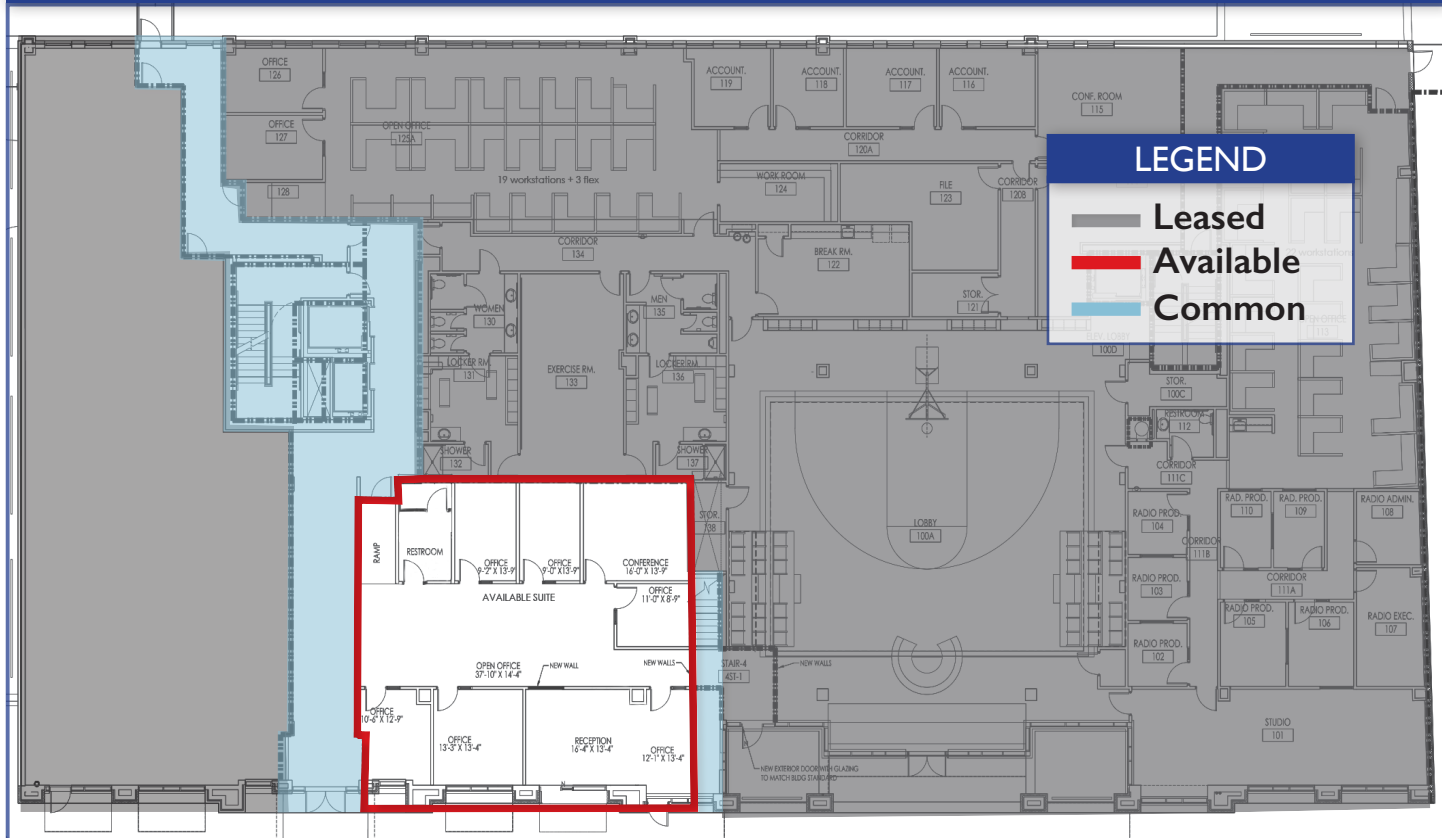
John L. Ruffin, CCIM
Jruffin@meridianrealty.com
336.480.2081

Tiffany J. Secoges, CCIM
Tiffany.s@meridianrealty.com
336.480.2094

FOR LEASE: \$21 PSF

WWW.MERIDIANREALTY.COM

FIRST FLOOR | 2,199± SF

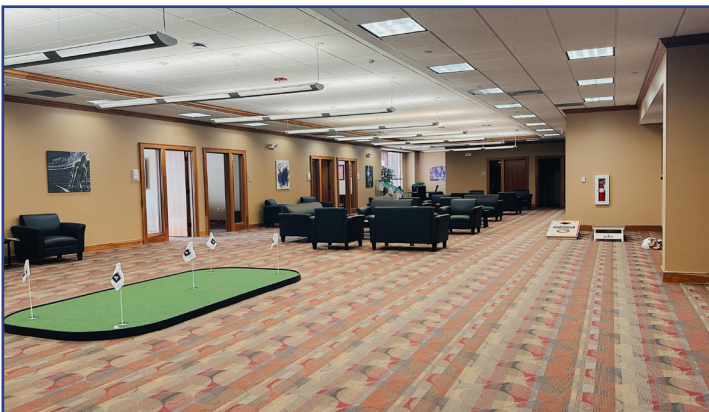


PHOTOS





PHOTOS



DOWNTOWN AERIAL



Property Details

- 2,199± RSF | First Floor
- 10,035± RSF | Second Floor
- Class A Office
- Great location in downtown Winston-Salem
- Attached to 720 space parking deck
- Modern upfits with attractive common spaces
- LEED Certified
- For Lease: \$21 PSF Gross (Tenant pays janitorial)
- Located in desirable Arts District



No warranty or representation (express or implied) is made as to the accuracy or completeness of the information set forth herein. All information is submitted subject to errors, omissions, change of price, prior lease or sale, and withdrawal without notice. All marketing material produced by the Meridian Realty Group is proprietary. Any reproduction is expressly prohibited.



THE MERIDIAN REALTY GROUP | 147 S. CHERRY STREET, SUITE 200 | WINSTON-SALEM, NC 27101

P 336.722.1986 | F 336.723.3173

WWW.MERIDIANREALTY.COM