

- 
- CENTRAL SOUTHWEST
LOCATION
- RECREATIONAL USERS
WELCOME

UNIT 5

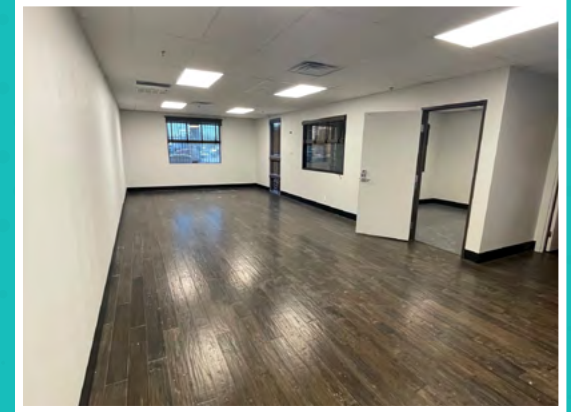
WEST HARMON AVENUE

HARMON INDUSTRIAL CENTER

4170 W. HARMON AVENUE | LAS VEGAS, NV 89103

CBRE

PROPERTY OVERVIEW



Harmon Industrial Center is an approximate 140,000 SF multi-tenant office/warehouse complex located at W. Harmon Avenue just west of Valley View Blvd.

This centrally located property boasts exceptional connectivity to key locations, including the Harmon Interchange, I-215 and I-15 freeway interchanges, the Las Vegas Strip, and Harry Reid International Airport. There is an abundance of amenities via the Tropicana and Flamingo Interchanges.



PROPERTY HIGHLIGHTS

±140,000 SF

MULTI-TENANT PROPERTY
ON 8.41 ACRES

NOW AVAILABLE



CENTRAL SOUTHWEST LOCATION



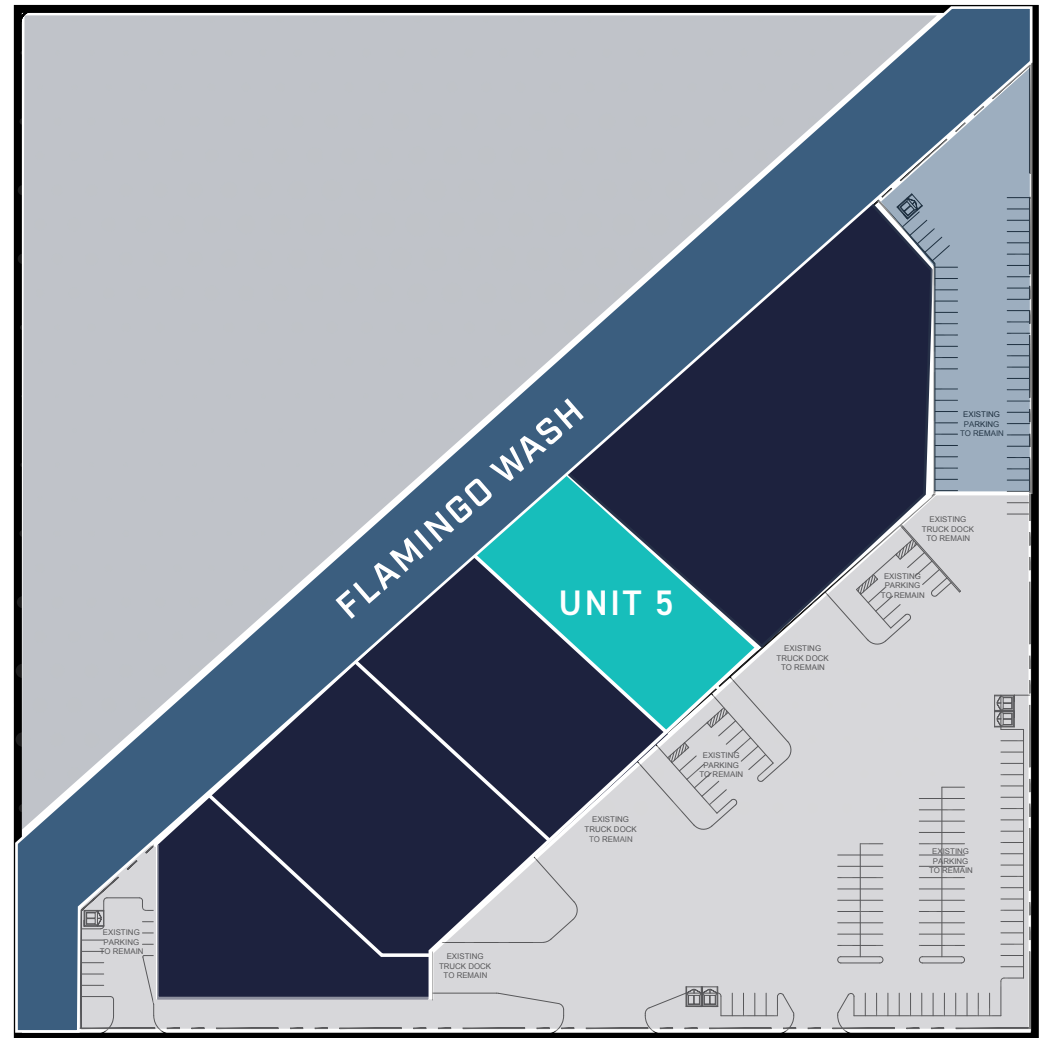
DISTRIBUTION



EXCELLENT ACCESS TO HARRY REID
INT'L AIRPORT & LAS VEGAS STRIP



5 MINUTE DRIVE TO I-15/215



W. HARMON AVE

ADDRESS	4170 W. Harmon Avenue, Las Vegas, NV 89103
UNIT	±23,247 SF Unit available (Unit 5)
CLEAR HEIGHT	±26'
POWER	3-phase power (Tenant to Confirm)
LIGHTING	Interior: LED Warehouse Lighting, SKYLIGHTS at 2%
LOADING	Grade Level & Dock-Hi
SPRINKLER SYSTEM	Fully Fire-Sprinklered
ZONING	IL (Industrial Light)
ASSESSOR'S PARCEL NO.	162-19-601-017
YEAR BUILT	1988

SUITE HIGHLIGHTS

UNIT 5 | ±23,247 SF
NOW AVAILABLE



OFFICE SPACE (SF TBD)



THREE (3) DOCK HIGH LOADING DOORS



TWO (2) GRADE LEVEL DOORS



26' CLEAR HEIGHT



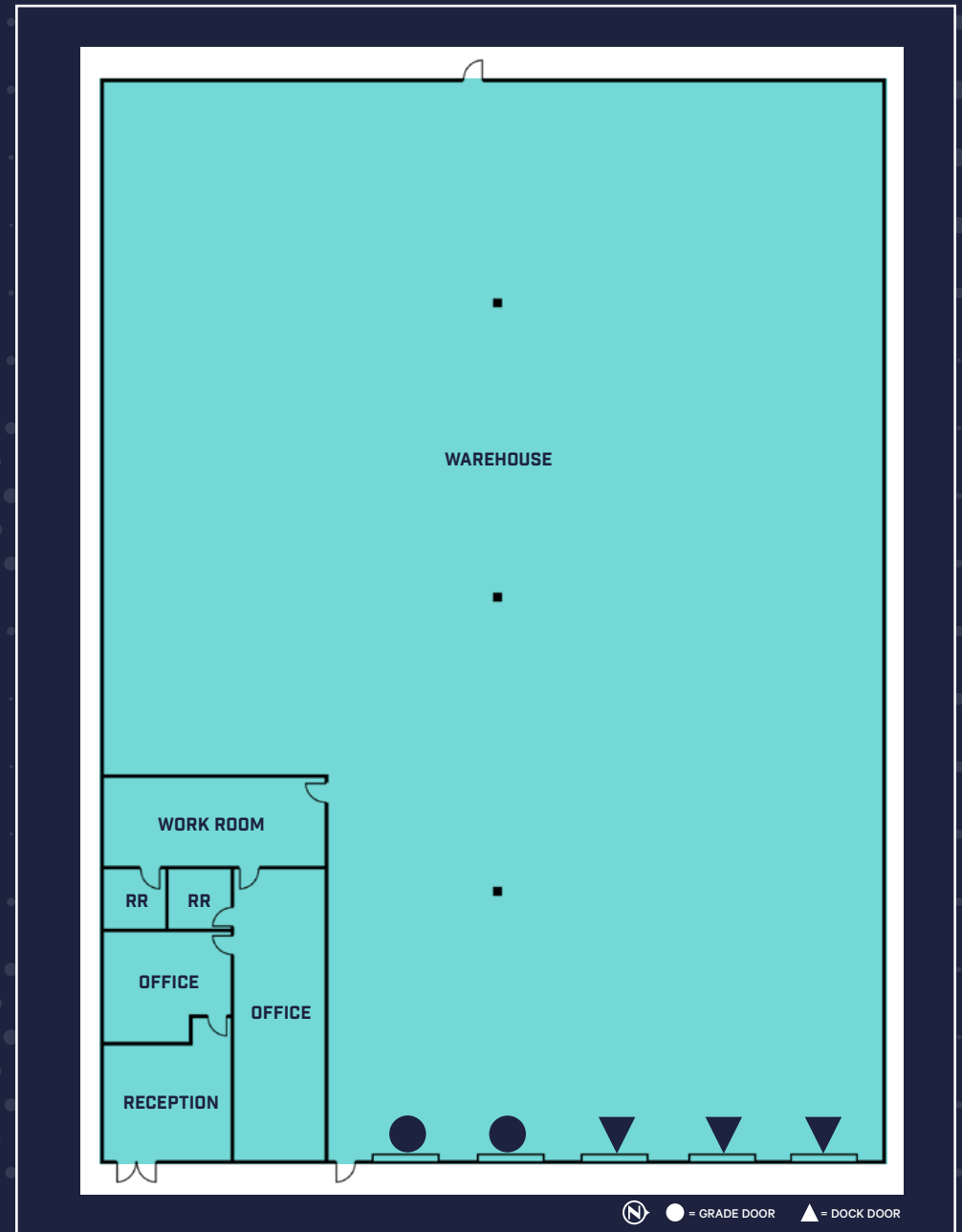
TWO (2) RESTROOMS



48' X 60' COLUMN SPACING

LEASE RATE: CALL FOR PRICING!

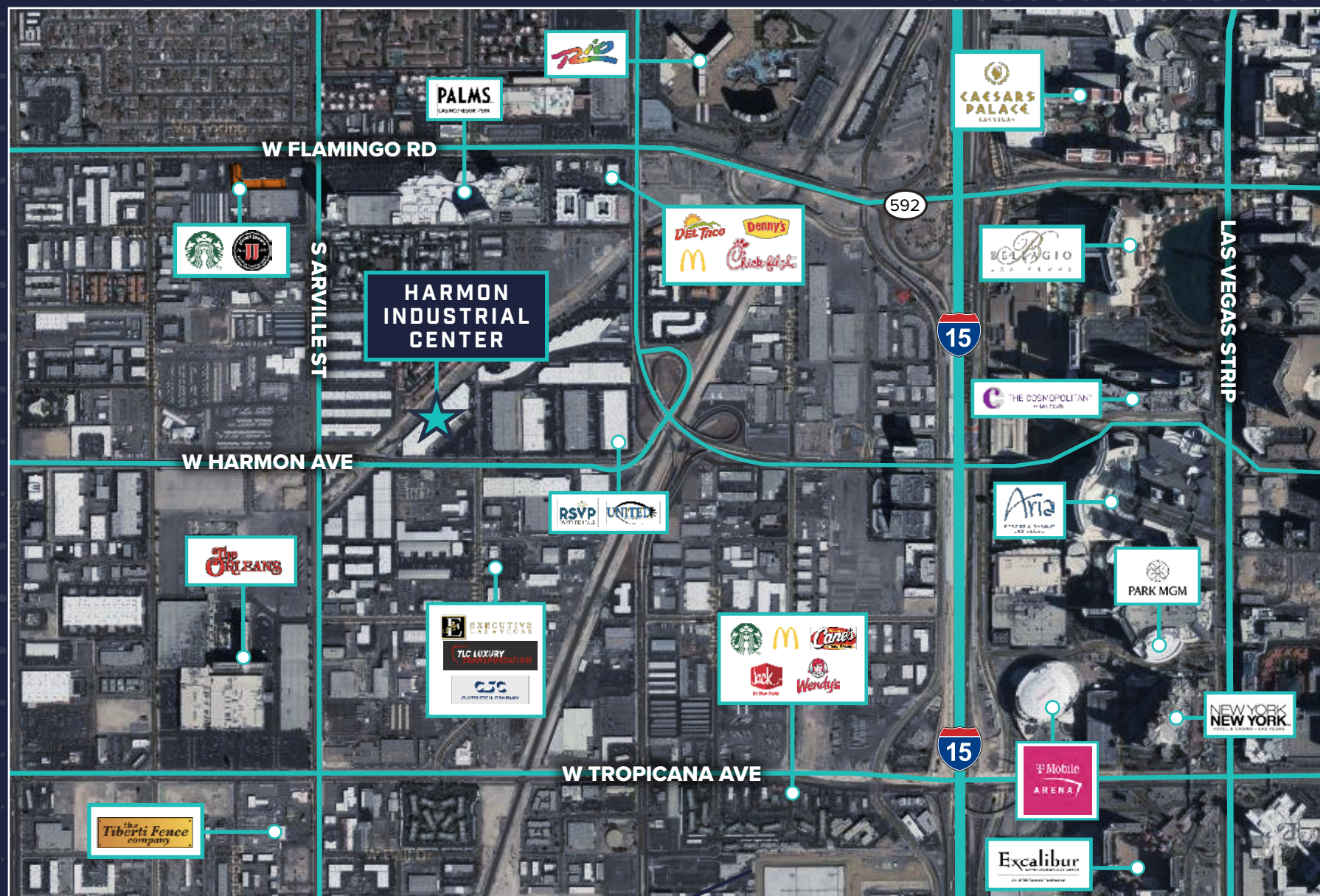
CAMS: \$0.19/SF



**not to scale*

**all measurements are approximate*

NEARBY AMENITIES



DISTANCES TO:

I-15 Freeway	1.8 miles
I-215 Freeway	3.4 miles

Las Vegas "Strip"	1.9 miles
Harry Reid Int'l Airport	4.2 miles



- **CENTRAL
SOUTHWEST
LOCATION**
- **ACCEPTING
RECREATIONAL
USERS**

HARMON INDUSTRIAL CENTER

4170 W. HARMON AVENUE | LAS VEGAS, NV 89103

ALEX STANISIC, SIOR

Vice President
(702) 369-4874
alex.stanisic@cbre.com
Lic # S.0179950

KYLE KIRCHMEIER

Associate
(702) 369-4862
kyle.kirchmeier@cbre.com
Lic # S.0197013

CBRE

© 2025 CBRE, Inc. All rights reserved. This information has been obtained from sources believed reliable but has not been verified for accuracy or completeness. CBRE, Inc. makes no guarantee, representation or warranty and accepts no responsibility or liability as to the accuracy, completeness, or reliability of the information contained herein. You should conduct a careful, independent investigation of the property and verify all information. Any reliance on this information is solely at your own risk. CBRE and the CBRE logo are service marks of CBRE, Inc. All other marks displayed on this document are the property of their respective owners, and the use of such marks does not imply any affiliation with or endorsement of CBRE. Photos herein are the property of their respective owners. Use of these images without the express written consent of the owner is prohibited. Some content was originally generated by GenAI and modified by the author.