

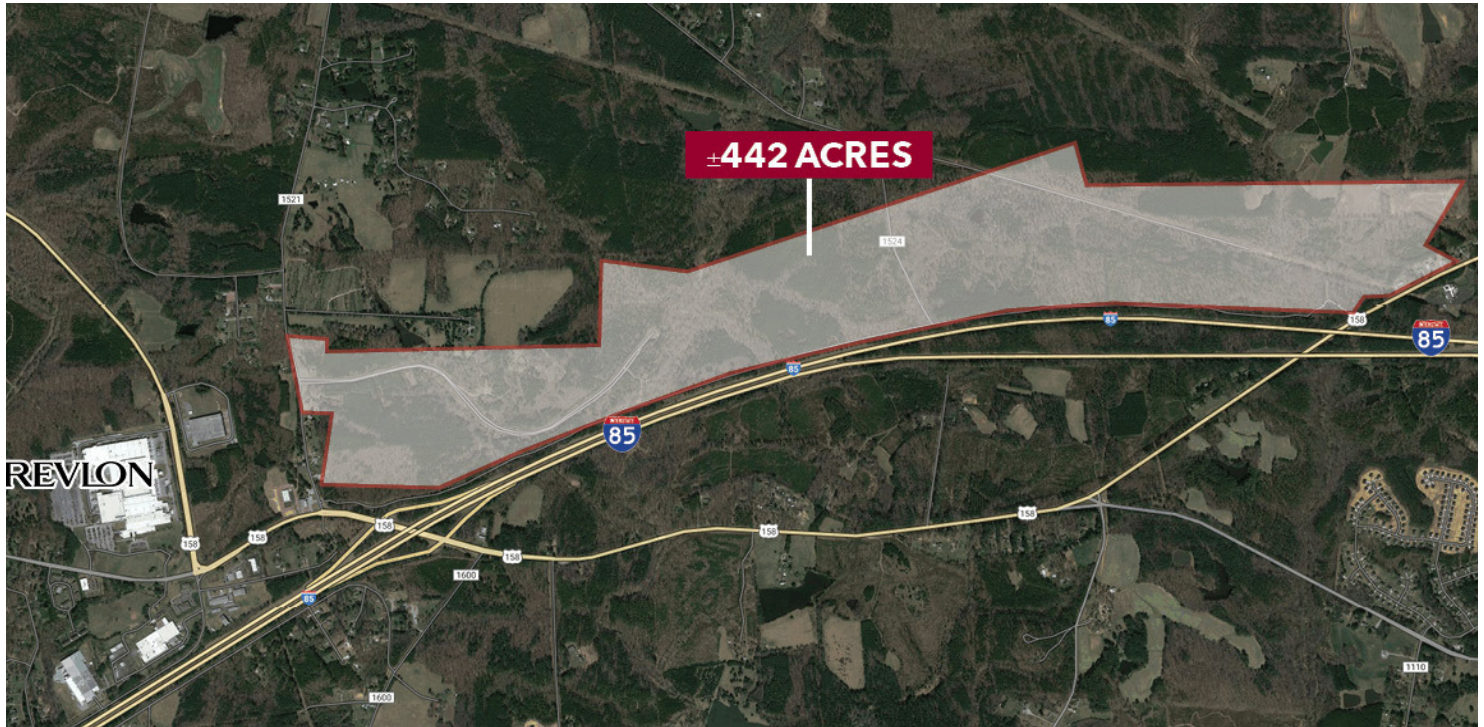
LAND FOR SALE

5612 TABBS CREEK ROAD

Oxford, NC 27565



COMMERCIAL REAL ESTATE SERVICES
RALEIGH • DURHAM • WILMINGTON



PROPERTY HIGHLIGHTS

- ±442 Acre site zoned I-2 making up the Kerr Tar Regional Economic Development Industrial Site in Granville County
- The property can be subdivided (5 acre minimum) for the appropriate development based on the needs of the prospective user
- Water and Sewer serve the site
- Strategically located off I-85 with easy access to Durham, Research Triangle Park, Lake Gaston, and Virginia
- Vance Granville Community College is located just north of the site to assist in Workforce Development for Industry located within the county
- Join Revlon, Altec, Certainteed, Bridgestone, and other companies calling Granville County home
- Price is \$35,000/Acre

PROPERTY DESCRIPTION

The land consists of ±442 acres that is mostly in Granville County and a portion is in Vance County. The Site is zoned I-2 with easy access to I-85.

LOCATION DESCRIPTION

The property is located just off of I-85 at Hwy. 158 on Tabbs Creek Road. The land is adjacent to I-85 and has some visibility from the Interstate. Water and Sewer serve the site and power is provided by Duke Power.

OFFERING SUMMARY

Sale Price:	\$35,000 / acre
Lot Size:	±442 Acres

Scott Hadley
shadley@lee-associates.com
O: 919.576.2504
C: 919.906.0524

All information furnished regarding property for sale, rental or financing is from sources deemed reliable, but no warranty or representation is made to the accuracy thereof and same is submitted to errors, omissions, change of price, rental or other conditions prior to sale, lease or financing or withdrawal without notice.
No liability of any kind is to be imposed on the broker herein.

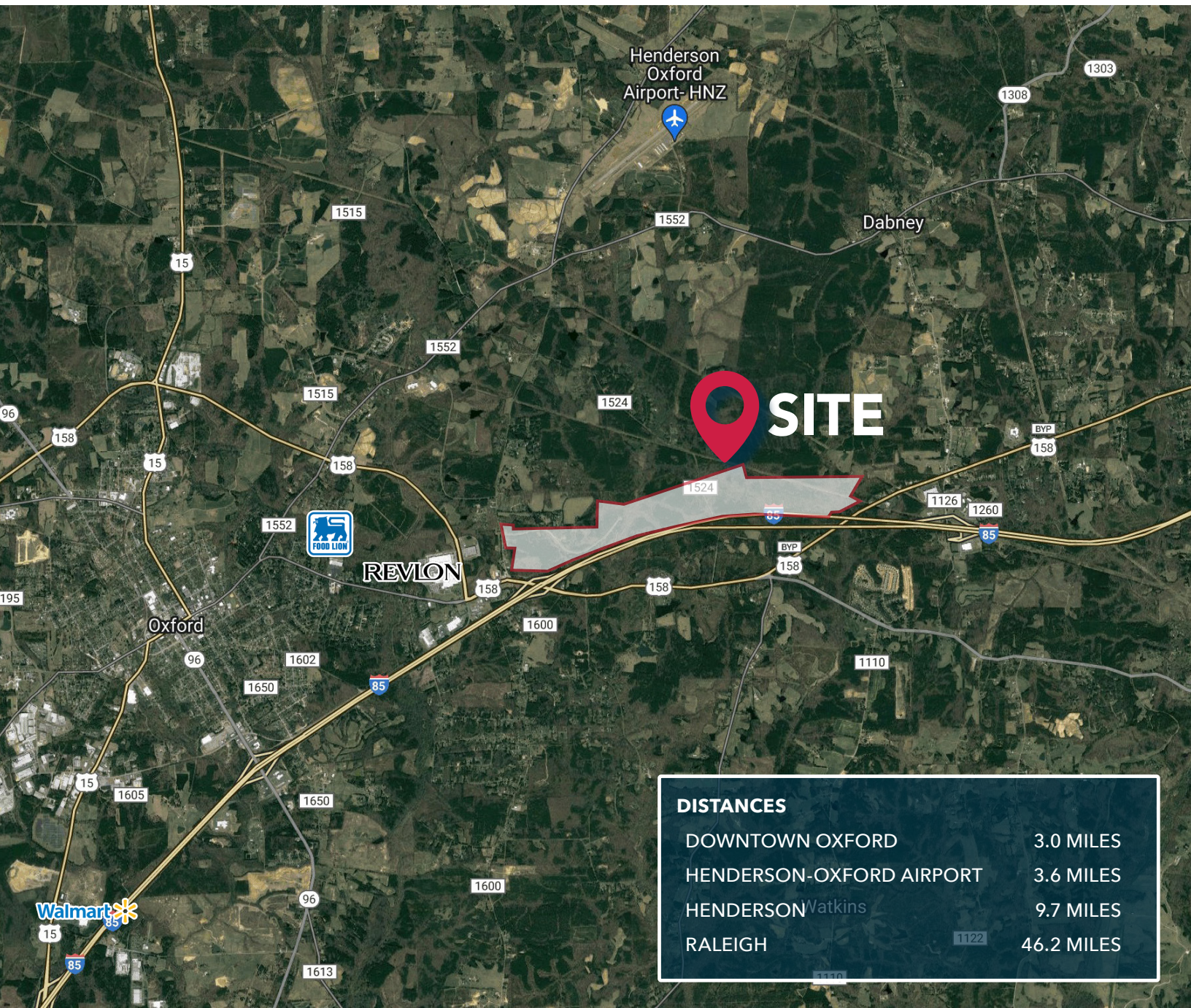
LAND FOR SALE

5612 TABBS CREEK ROAD

Oxford, NC 27565



COMMERCIAL REAL ESTATE SERVICES
RALEIGH • DURHAM • WILMINGTON



DISTANCES

DOWNTOWN OXFORD	3.0 MILES
HENDERSON-OXFORD AIRPORT	3.6 MILES
HENDERSON	9.7 MILES
RALEIGH	46.2 MILES

Scott Hadley
shadley@lee-associates.com
O: 919.576.2504
C: 919.906.0524

All information furnished regarding property for sale, rental or financing is from sources deemed reliable, but no warranty or representation is made to the accuracy thereof and same is submitted to errors, omissions, change of price, rental or other conditions prior to sale, lease or financing or withdrawal without notice.
No liability of any kind is to be imposed on the broker herein.