

# 270 EAST FORDHAM RD

Between Valentine & Tiebout Avenues

SPACE A

## RETAIL FOR LEASE

## RETAIL FOR LEASE

## RETAIL FOR LEASE

LEASE OUT

# 270 EAST FORDHAM RD

Between Valentine & Tiebout Avenues

## PROPERTY INFORMATION:

SPACE A: 4,286 SF Ground Floor  
6,756 SF Second Floor  
3,300 SF Basement

SPACE B: **LEASE OUT** 3,200 SF Ground Floor  
3,300 SF Basement

FRONTAGE: A: 42' | B: 32'

ASKING RENT: Upon Request

POSSESSION: Arranged

TRANSPORTATION: **B D**

### HIGHLIGHTS:

- Second floor can be leased separately
- Escalators connecting ground and second floor spaces
- Very strong retail block with national tenants - lots of car/foot traffic & consumer activity
- Steps from Fordham University, with over 6,500 students and 1,000 staff members
- Four blocks from Fordham Plaza, Fordham Place & 800,000 SF of fully occupied office space
- Neighbors include: *Taco Bell, Dunkin', Subway, AT&T, Applebee's, Best Buy, Target, Five Below, Chipotle, Starbucks*



# 270 EAST FORDHAM ROAD

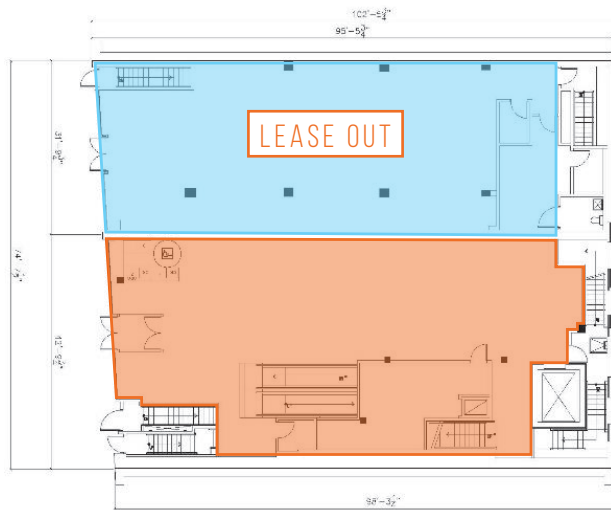
Between Valentine & Tiebout Avenues

Floor Plans:

Space A: 4,286 SF Ground Floor  
6,756 SF Second Floor  
3,300 SF Basement

Space B: ~~3,200 SF Ground Floor~~  
~~3,300 SF Basement~~

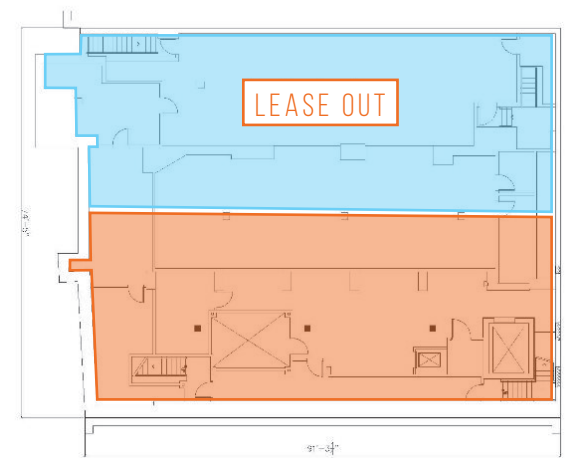
LEASE OUT



Ground Floor



Second Floor



Basement

FOR MORE INFORMATION, PLEASE CONTACT:

**FREDDY SOUID**

917.968.0329

FSouid@ksrny.com

**JACK KHASKI**

**917.355.0559**

JackK@ksrny.com

**ALBERT MANOPLA**

212.380.8369

AManopla@ksrny.com



1385 Broadway, 22nd Floor

New York, NY 10018

212.417.9217

ksrny.com

All information supplied in this marketing presentation and/or flyer is from sources deemed reliable and is furnished subject to errors, omissions, modifications, removal of listings from sale/lease and to any listing condition. Any square footage, dimensions, floor plans and/or technical data set forth are approximations and are subject to further elaboration/confirmation.