

FOR SALE OR LEASE

RUSH FUNPLEX EXCESS LAND



## PROPERTY DETAILS

3100 North Main Street, North Logan, UT 84321

- 31.17 Acres Available
- High Traffic Counts
  - » Main Street 38,525 ADT
- Located near the George Eccles Ice Center, Green Canyon High School, Cache Valley Hospital & Logan Cache Airport
- Located across the street from Mountainland RV, Heritage Chrysler, Dodge, Jeep, and Ram of Logan, Murdock Hyundai of Logan
- Anchor tenant: Rush Funplex Center
- Contact a Listing Agent for additional information
- [Main Street Commercial Gateway Zoning \(MSCG\)](#)

## 2025 DEMOS



### EST. POPULATION

1 MILE » 12,466  
 3 MILE » 61,537  
 5 MILE » 94,803



### EST. HOUSEHOLDS

1 MILE » 4,745  
 3 MILE » 20,667  
 5 MILE » 31,121



### EST. AVERAGE HH INCOME

1 MILE » \$68,665  
 3 MILE » \$89,031  
 5 MILE » \$100,398

# NEWMARK

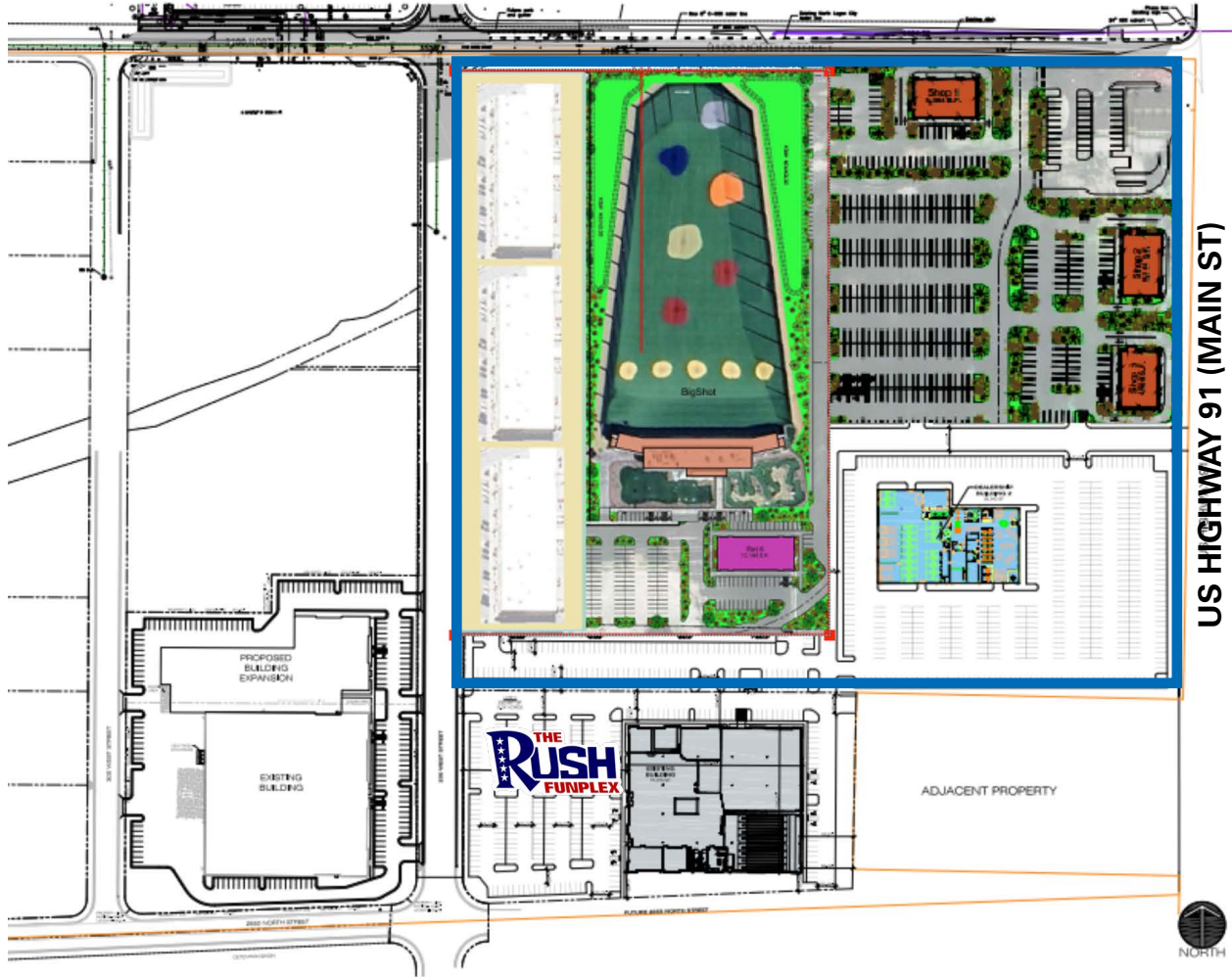
## MOUNTAIN WEST

**RYAN STEWART**  
 rstewart@newmarkmw.com  
 direct 801.578.5541  
[View Profile](#)

**SCOTT BRADY**  
 sbrady@newmarkmw.com  
 direct 801.456.8804  
[View Profile](#)

**FULL SERVICE  
 COMMERCIAL REAL ESTATE**  
 312 East South Temple  
 Salt Lake City, Utah 84111  
 Office 801.456.8800  
[www.newmarkmw.com](http://www.newmarkmw.com)

PROPOSED SITE PLAN A



NEWMARK

MOUNTAIN WEST

**RYAN STEWART**  
 rstewart@newmarkmw.com  
 direct 801.578.5541  
[View Profile](#)

**SCOTT BRADY**  
 sbrady@newmarkmw.com  
 direct 801.456.8804  
[View Profile](#)

**FULL SERVICE  
 COMMERCIAL REAL ESTATE**  
 312 East South Temple  
 Salt Lake City, Utah 84111  
 Office 801.456.8800  
[www.newmarkmw.com](http://www.newmarkmw.com)



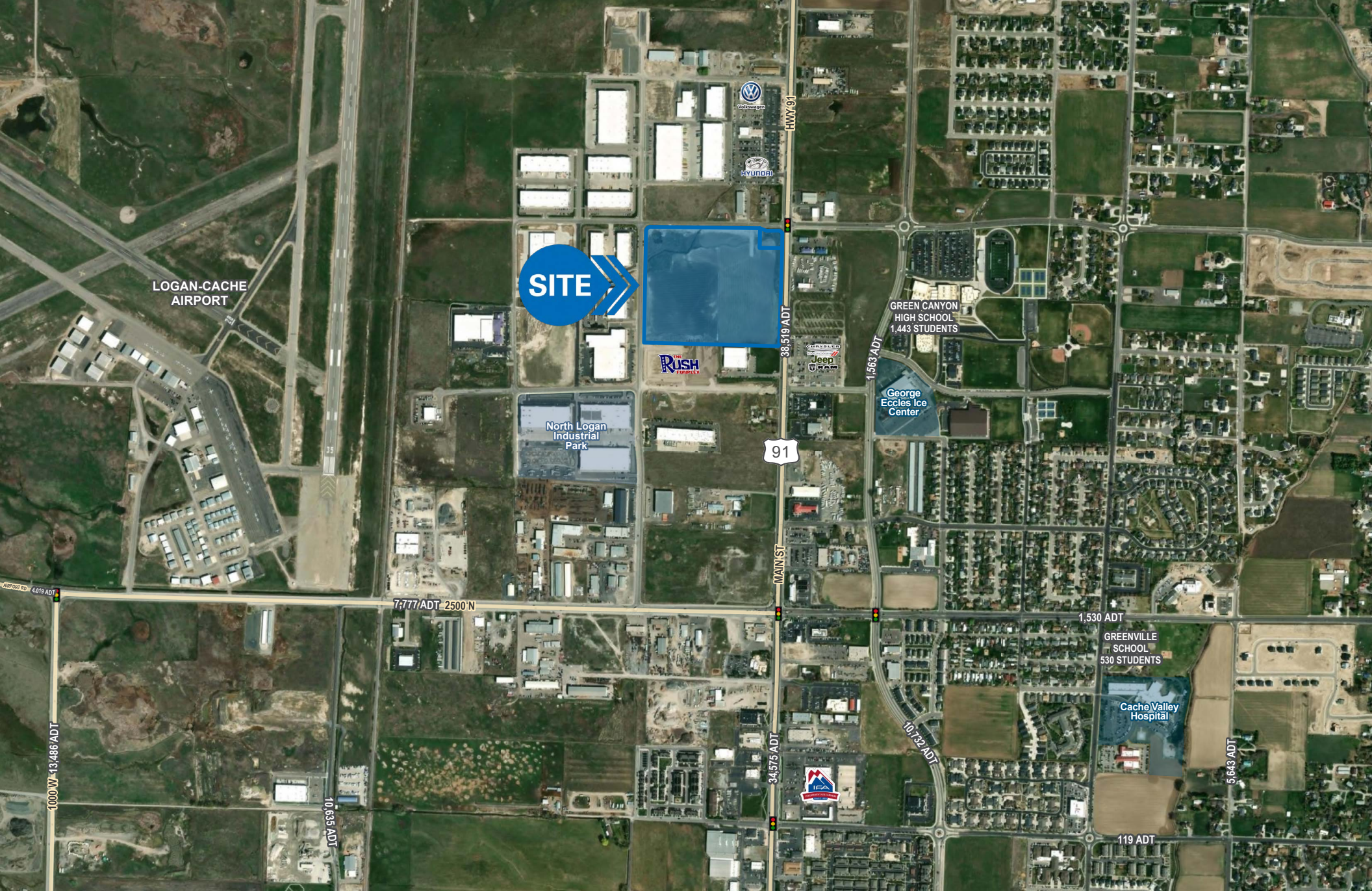
PROPOSED SITE PLAN C

RYAN STEWART
rstewart@newmarkmw.com
direct 801.578.5541
View Profile

SCOTT BRADY
sbrady@newmarkmw.com
direct 801.456.8804
View Profile



FULL SERVICE COMMERCIAL REAL ESTATE
312 East South Temple
Salt Lake City, Utah 84111
Office 801.456.8800
www.newmarkmw.com



**RYAN STEWART**  
 rstewart@newmarkmw.com  
 direct 801.578.5541  
[View Profile](#)

**SCOTT BRADY**  
 sbrady@newmarkmw.com  
 direct 801.456.8804  
[View Profile](#)

**FULL SERVICE  
 COMMERCIAL REAL ESTATE**  
 312 East South Temple  
 Salt Lake City, Utah 84111  
 Office 801.456.8800  
[www.newmarkmw.com](http://www.newmarkmw.com)