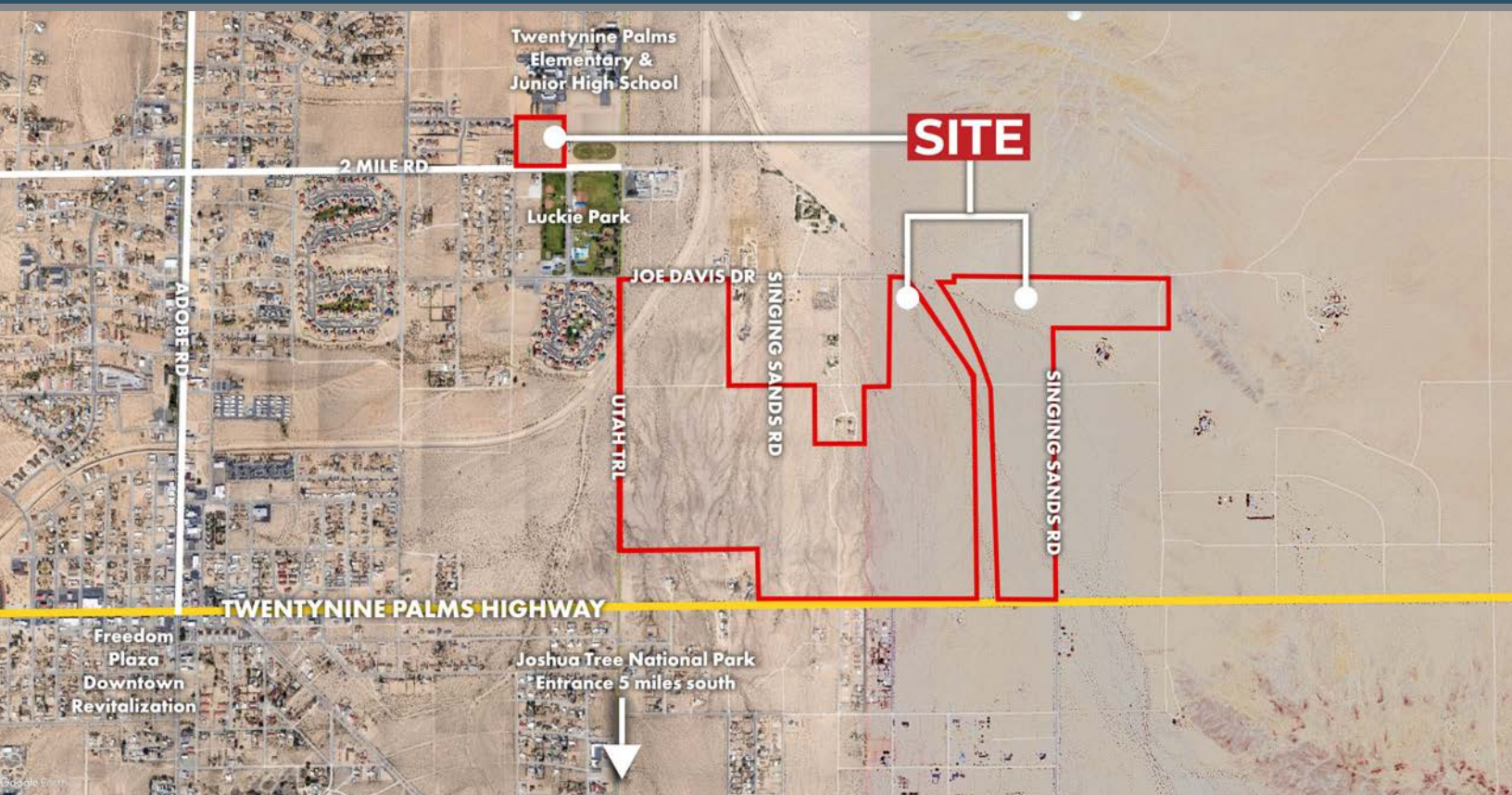


# 389.84 ACRES RESIDENTIAL LAND

TWENTYNINE PALMS, CA



**TWENTYNINE PALMS HWY & UTAH TRAIL, TWENTYNINE PALMS, CA**

## FEATURES

- 389 acres residential land in Twentynine Palms - all or part
- Located along Twentynine Palms Highway, the main arterial roadway in the City of Twentynine Palms
- Just 4.25 miles from Twentynine Palms Airport
- One and a half miles from Freedom Plaza, Twentynine Palms' new 10-acre downtown revitalization project, featuring an 11,000 SF community center, outdoor event space, and Joshua Tree National Park Visitor Center
- Located just 5 miles from the entrance to Joshua Tree National Park, which welcomed nearly 3 million visitors in 2024

**PRICE: \$1,200,000**

## PROPERTY PHOTO



  
**Desert Pacific**  
PROPERTIES, INC.  
COMMERCIAL REAL ESTATE

3/19/25 JC



**MARK MCMANIS**

DRE #02094911  
markm@dppllc.com  
Cell: 209.681.6392



**SUSAN HARVEY**

DRE #00957590  
susan@dppllc.com  
Cell: 760.250.8992

**DesertPacificProperties.com 760.360.8200**



# 389.84 ACRES RESIDENTIAL LAND

TWENTYNINE PALMS, CA



**Directions:** From I-10, take exit 117 for CA-62 E toward 29 Palms/Yucca Valley. Travel for approximately 43 miles to Utah Trail. Property will be on the left (north) side of Twentynine Palms Highway.

## SITE AMENITIES

- **Location:** Property is located on the north side of Twentynine Palms Highway just east of Utah Trail in Twentynine Palms, CA.
- **Zoning:** [RS-4 \(Single Family Residential - 4 du/ac\)](#); [RS-2 \(Single Family Residential - 2 du/ac\)](#); [RL-2.5 \(Rural Living - 2.5 ac min\)](#); [F \(Floodway\) - \(Click to view\)](#)
- **General Plan:** [RS-4 \(Single Family Residential - 4 du/ac\)](#); [RS-2 \(Single Family Residential - 2 du/ac\)](#); [RL-2.5 \(Rural Living - 2.5 ac min\)](#); [F \(Floodway\) - \(Click to view\)](#)
- **Parcel Size (According to County Assessor's Information):** 389.84 acres
- **APNs/Parcel Size:** 0621-231-05 (9.25 AC); 0621-211-08 (20 AC), 10 (20 AC), 12 (66.25 AC), 13 (2.5 AC), 22 (20 AC), 25 (10 AC), 26 (10 AC), 29 (38.48 AC), 30 (24.41 AC), 31 (43.77 AC), 32 (4.52 AC), 33 (9.95 AC); 0623-222-04 (37.03 AC); 0623-271-08 (20 AC), 28 (19.75 AC), 29 (33.93 AC)
- **Utilities:** Domestic Water: Water in street. Inquire for details.  
Sewer: None
- **Flood Zone:** AE, AO, X
- **Earthquake Fault Zone:** Yes; a portion of the property
- **Terms:** Cash; All or Part

## PROPERTY PHOTO



760.360.8200 | [DesertPacificProperties.com](http://DesertPacificProperties.com) | 44267 Monterey Ave, Ste. A, Palm Desert, CA 92260

Disclaimer: The information provided has been obtained from sources believed reliable. While we do not doubt its accuracy, we have not verified it and make no guarantee, warrant or representation about it. Buyer is strongly encouraged to independently confirm its accuracy and completeness. Any projections, opinions assumptions or estimates used are for example only, and may not accurately represent the current or future performance of the property.