

OFFICE SPACE FOR LEASE

8 NORWICH STREET

Worcester, Massachusetts



BRIAN JOHNSON

774.272.1112

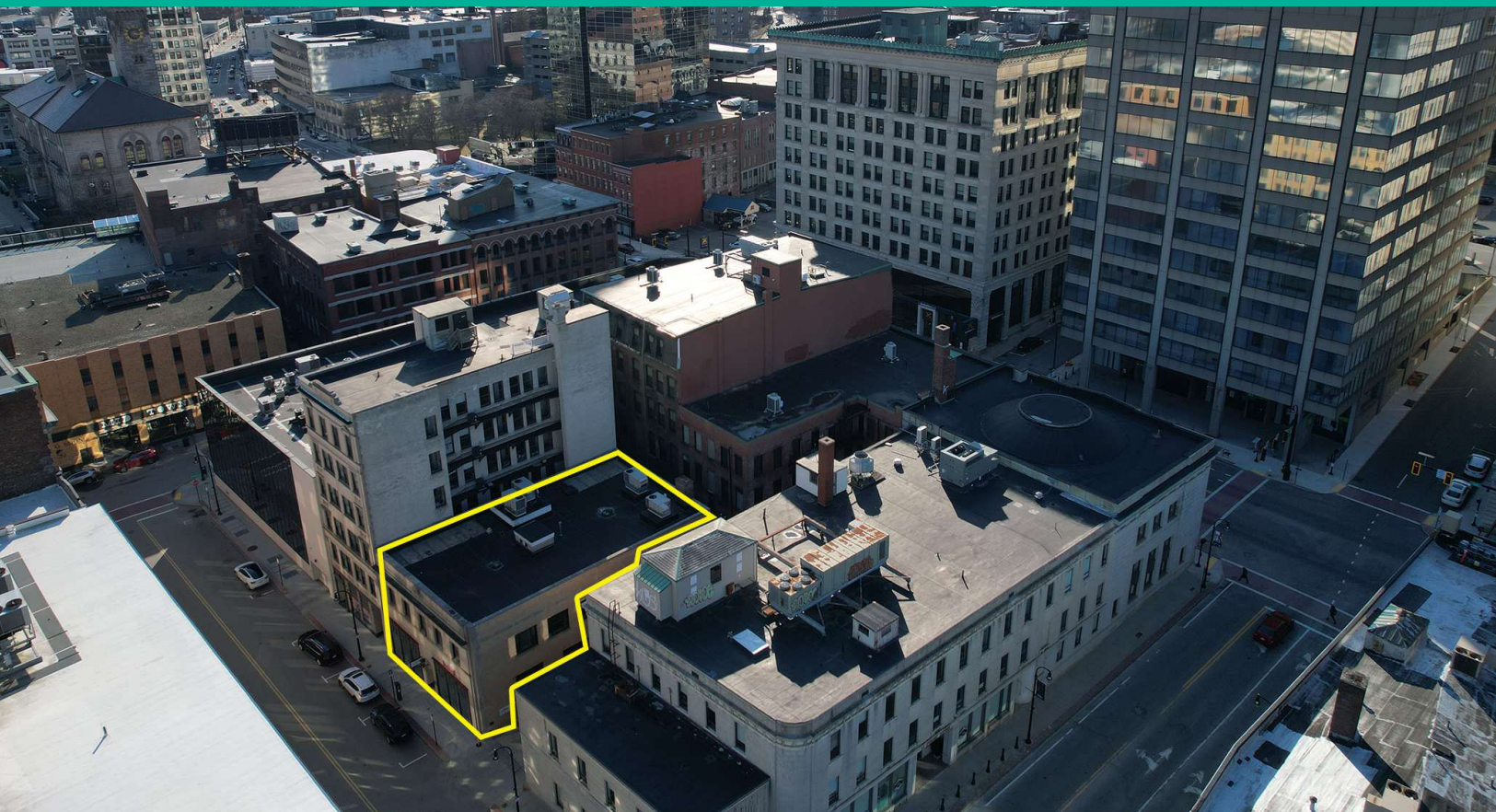
johnson@kelleher-sadowsky.com

JAY UMPHREY

508.333.7520

jayumphrey@kelleher-sadowsky.com





PROPERTY DESCRIPTION

Jay Umphrey and Brian Johnson of Kelleher & Sadowsky Associates, Inc. are pleased to present two professional office suites available for lease at 8 Norwich Street, located in the heart of downtown Worcester.

The first-floor suite offers approximately 1,100 SF and features open space ideal for cubicles, a reception area, and a private office. The second-floor suite includes approximately 3,750 SF with 12 private offices, a conference room, and open floor space, all recently updated with new paint and carpet.

Both suites feature high ceilings, abundant natural light, and shared access to a common kitchenette on the lower level. The suites can be leased separately or together for a combined ±4,850 SF of professional space. Additionally, there are up to six individual private offices available for lease on the second floor.

The building is ideally situated within walking distance of City Hall, the DCU Center, federal and district courthouses, and a wide range of amenities including banks, hotels, and restaurants. It also offers convenient access to I-290, with connections to I-90, Route 9, and Route 20.

Contact us today to schedule a tour.

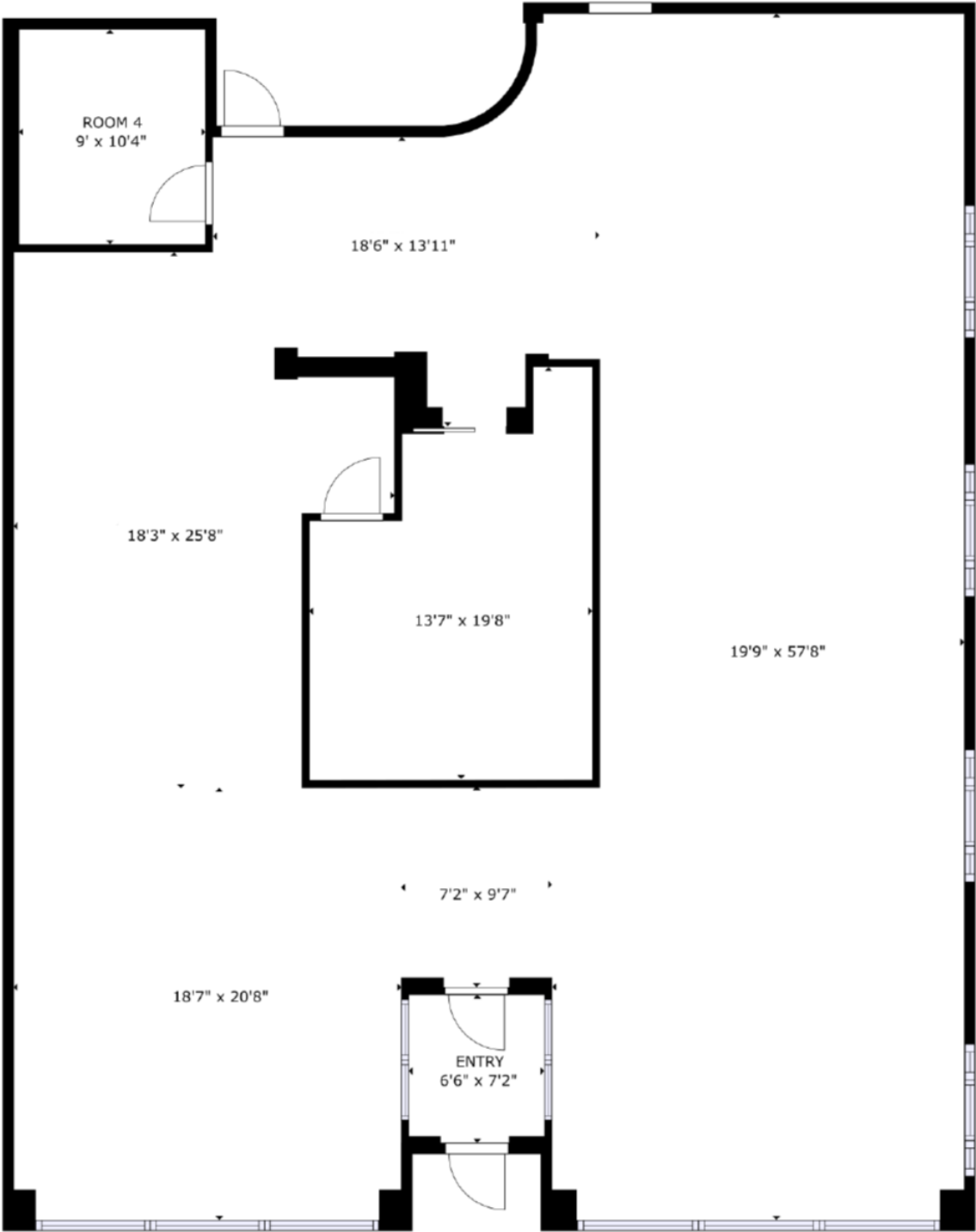
OFFERING SUMMARY

Property Type:	Office
Available Office Suites:	Suite 1: ±1,100 SF Suite 2: ±3,750 SF Combined: ±4,850 SF
Available Private Offices:	6 private offices ranging from 109 SF - 176 SF
Building Size:	7,488 SF
Zoning:	BG-6
Lease Rate - Office Suites:	\$20.00 SF/yr (MG)
Lease Rate	\$500 - \$700 SF/yr (Utilities Included)

FOR LEASE • 8 NORWICH STREET

[Additional Photos](#)





SIZES AND DIMENSIONS ARE APPROXIMATE, ACTUAL MAY VARY.



FOR LEASE • 8 NORWICH STREET

Location & Amenity Map



Map data
©2025
Google