

FOR LEASE: FROM \$27/SF
6698 68th Ave N, Pinellas Park

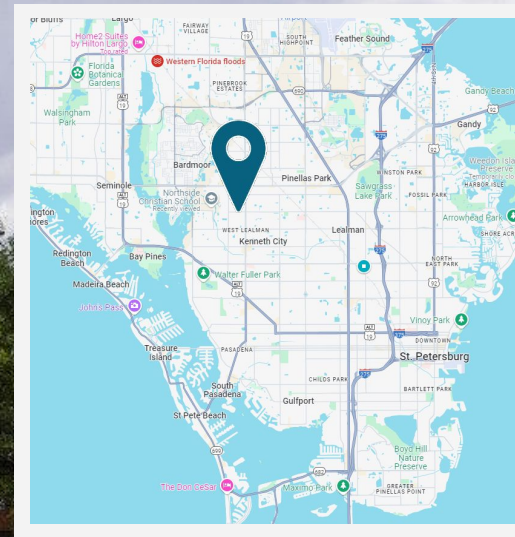
Ready for immediate occupancy!

PROPERTY HIGHLIGHTS

- Suites available from 1,130 to 25,000 sqft.
- Contiguous floor plans available up to 12,500 sqft per floor.
- Parking: 203 surface spaces and 12 covered spaces.
- Office ceiling heights of 8'
- Move-in ready - Fully remodeled office space.

LOCATION HIGHLIGHTS:

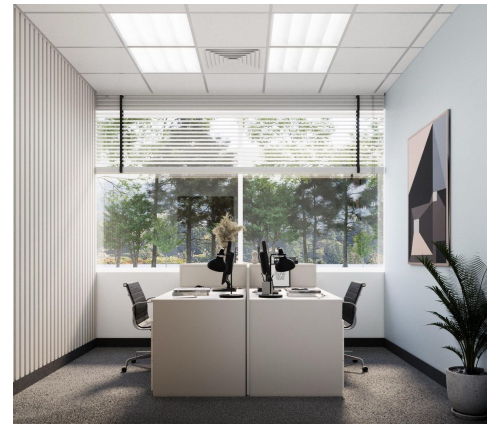
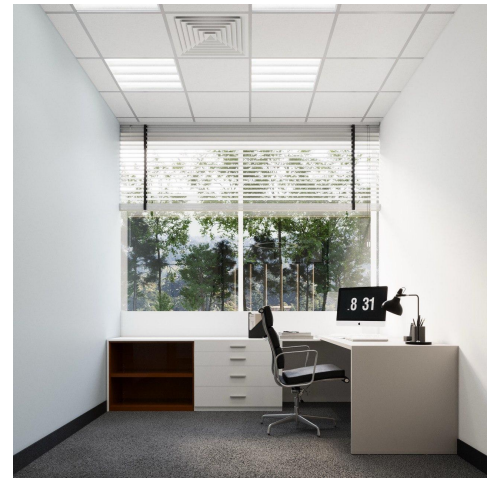
Ideal Central Pinellas Park location with easy access to I-275, US 19, & Park Blvd.



For more information:

Craig Brown
Seacrest Advisors LLC
407 312 9349 | craig.brown@seacrestadvisors.com

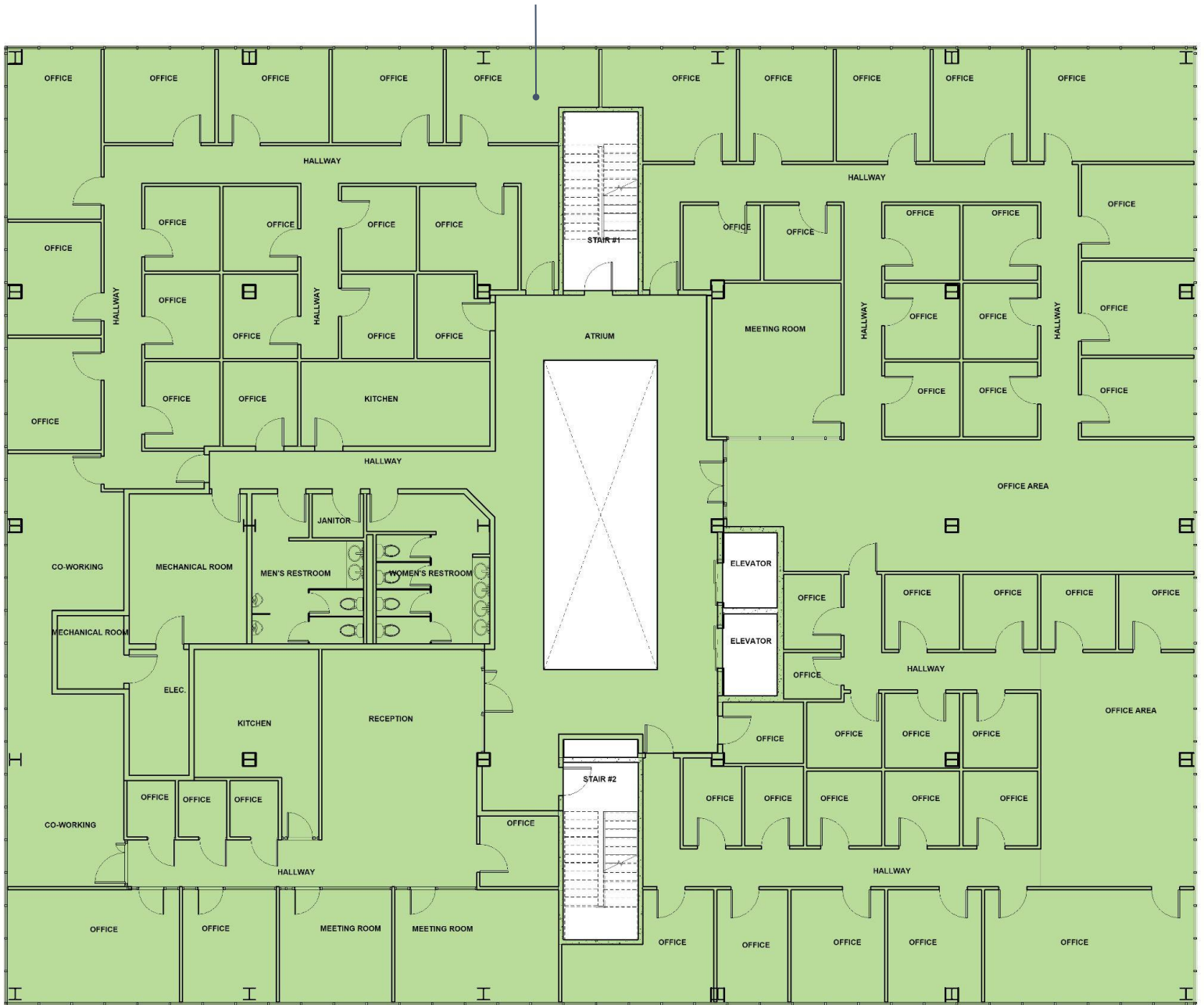
SUITE	TOTAL SF	AVAILABLE
200	12,500	immediately
201	4,592	immediately
202	5,667	immediately
203	2,286	immediately
204	3,118	immediately
205	2,302	immediately
206	2,550	immediately
207	1,425	immediately
208	1,130	immediately
209	1,320	immediately
210	1,791	immediately
211	2,036	immediately
212	2,558	immediately
400	12,500	immediately
401	4,592	immediately
402	5,667	immediately
403	2,286	immediately
404	3,118	immediately
405	2,302	immediately
406	2,550	immediately
407	1,425	immediately
408	1,130	immediately
409	1,320	immediately
410	1,791	immediately
411	2,036	immediately
412	2,558	immediately



For more information:

Craig Brown
 Seacrest Advisors LLC
 407 312 9349 | craig.brown@seacrestadvisors.com

Suite 200
12,500 SF



For more information:

Craig Brown
Seacrest Advisors LLC
407 312 9349 | craig.brown@seacrestadvisors.com

Suite 201
4,592 SF

Suite 202
5,667 SF

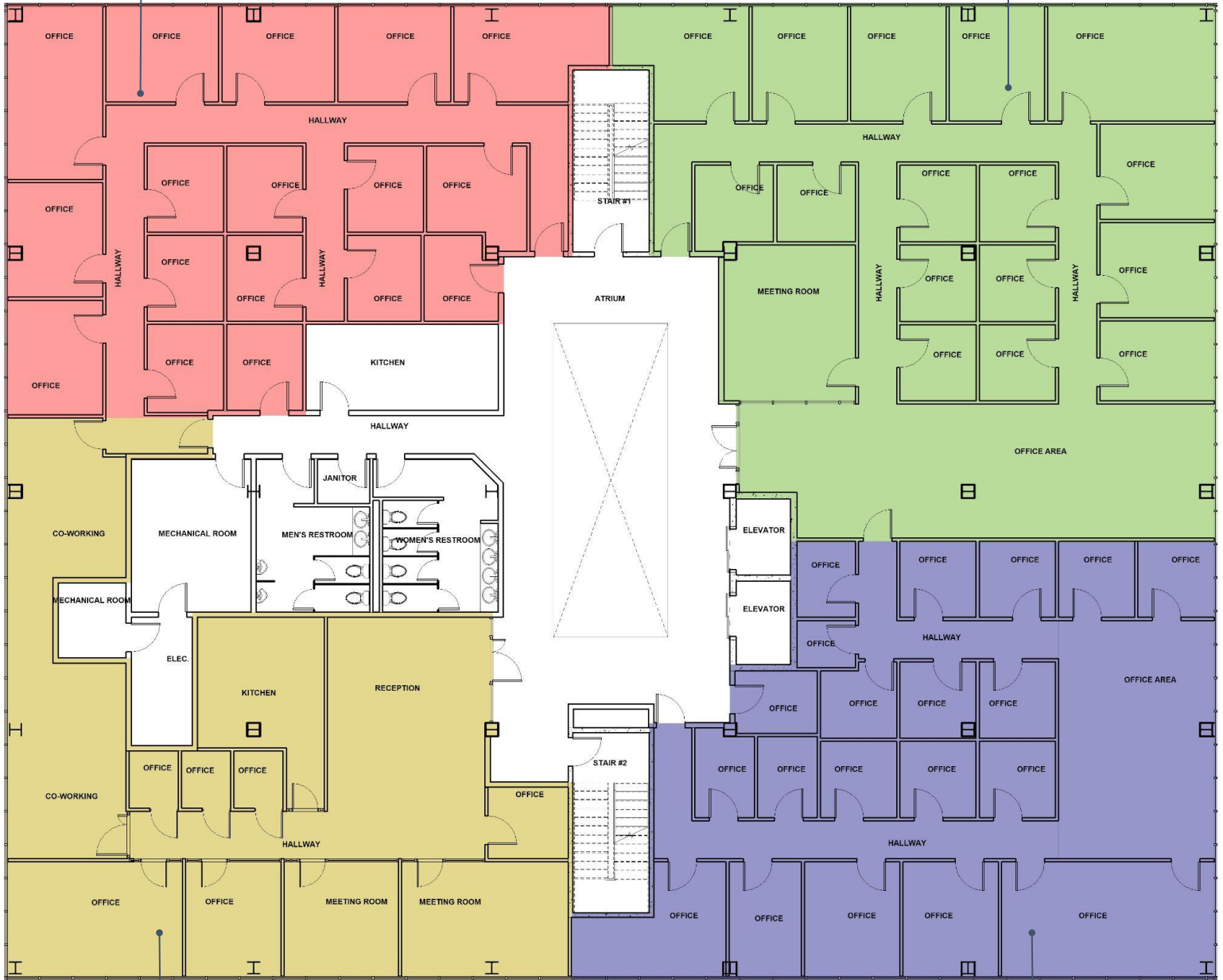


For more information:

Craig Brown
Seacrest Advisors LLC
407 312 9349 | craig.brown@seacrestadvisors.com

Suite 203
2,286 SF

Suite 204
3,118 SF



Suite 205
2,302 SF

Suite 206
2,550 SF

For more information:

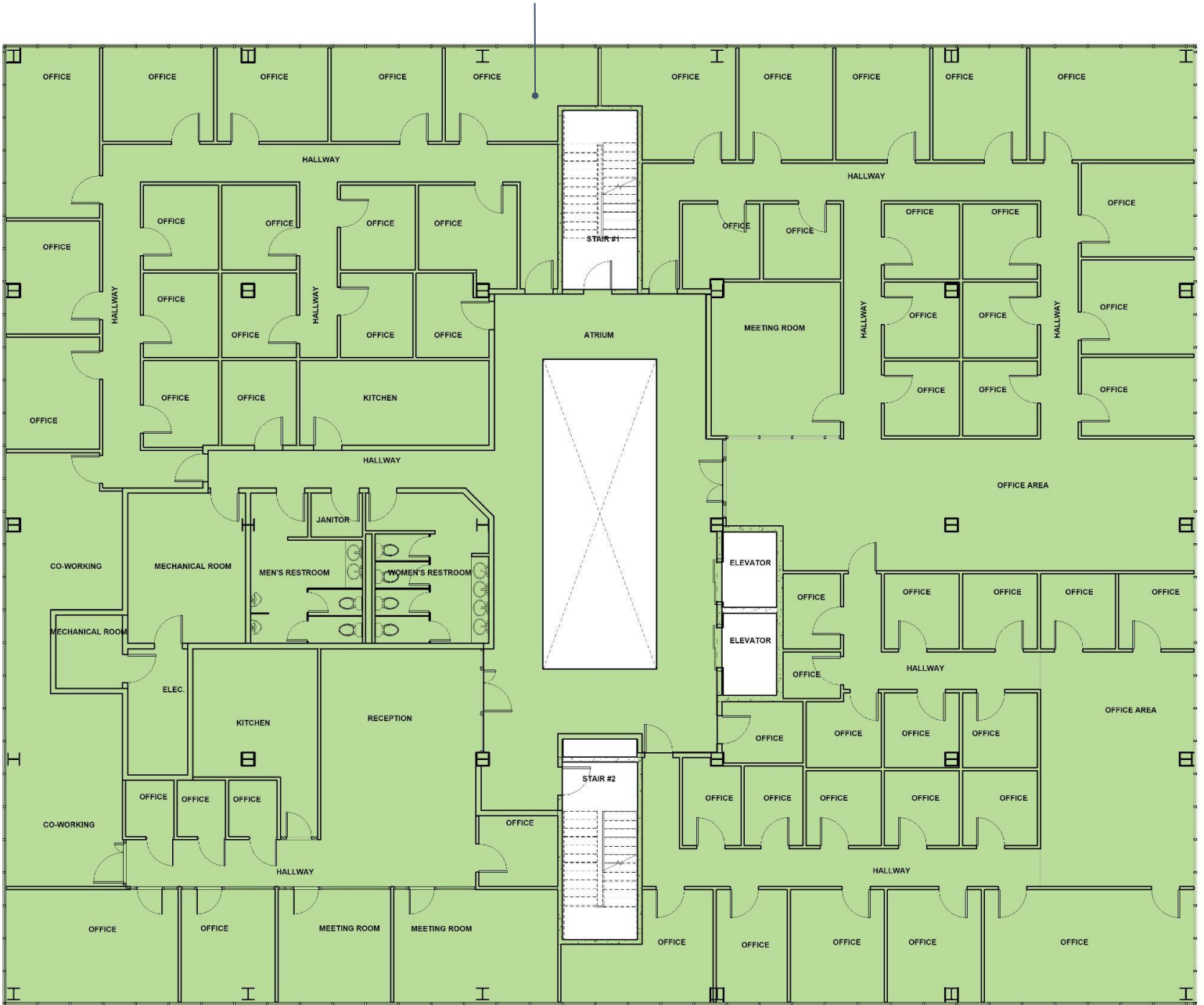
Craig Brown
Seacrest Advisors LLC
407 312 9349 | craig.brown@seacrestadvisors.com



For more information:

Craig Brown
Seacrest Advisors LLC
407 312 9349 | craig.brown@seacrestadvisors.com

Suite 400
12,500 SF



For more information:

Craig Brown
Seacrest Advisors LLC
407 312 9349 | craig.brown@seacrestadvisors.com

Suite 401
4,592 SF

Suite 402
5,667 SF



For more information:

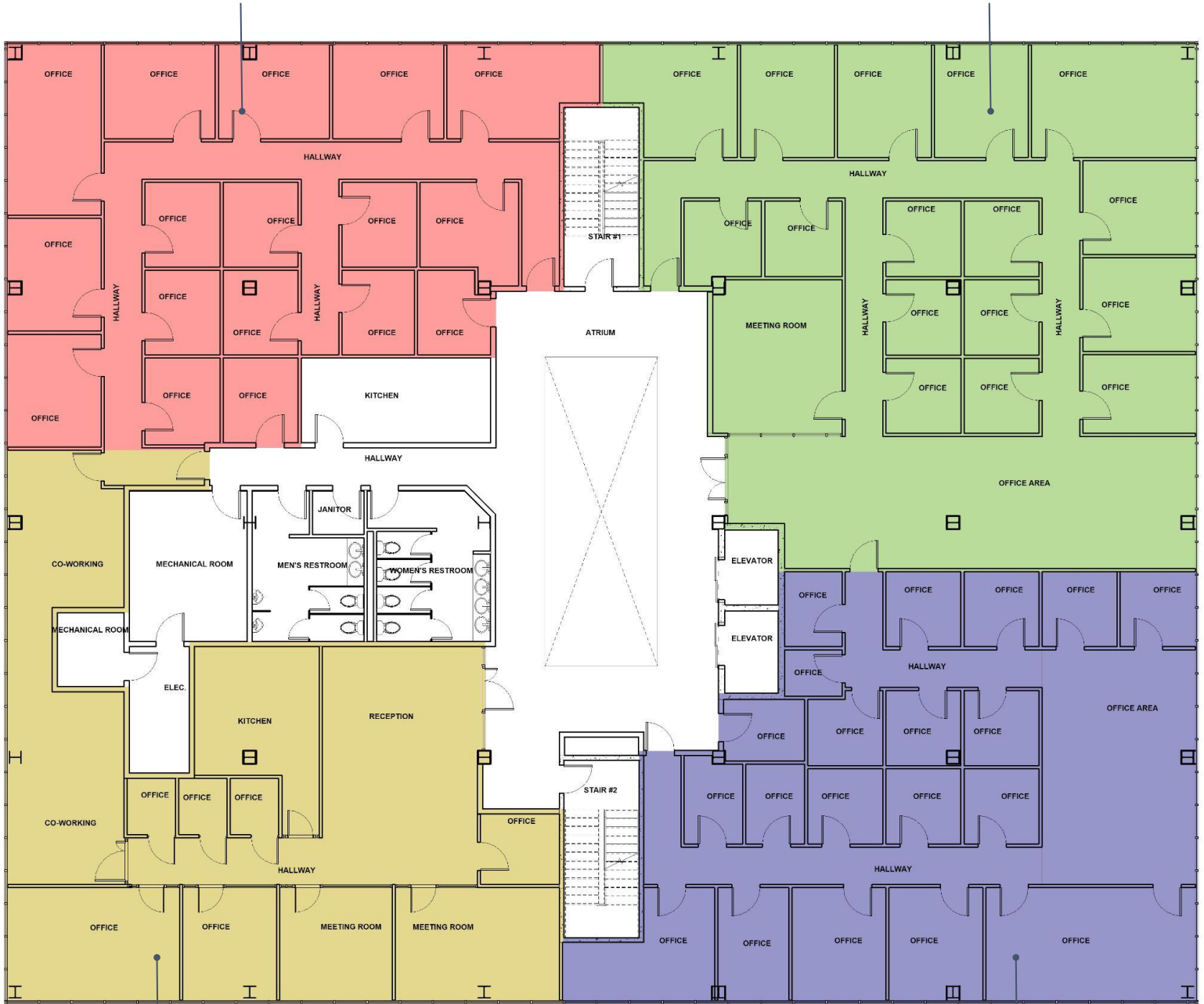
Craig Brown
Seacrest Advisors LLC
407 312 9349 | craig.brown@seacrestadvisors.com

4th FLOOR

6698 68th Ave N, Pinellas Park

Suite 403
2,286 SF

Suite 404
3,118 SF



Suite 405
2,302 SF

Suite 406
2,550 SF

For more information:

Craig Brown
Seacrest Advisors LLC
407 312 9349 | craig.brown@seacrestadvisors.com

4th FLOOR

6698 68th Ave N, Pinellas Park

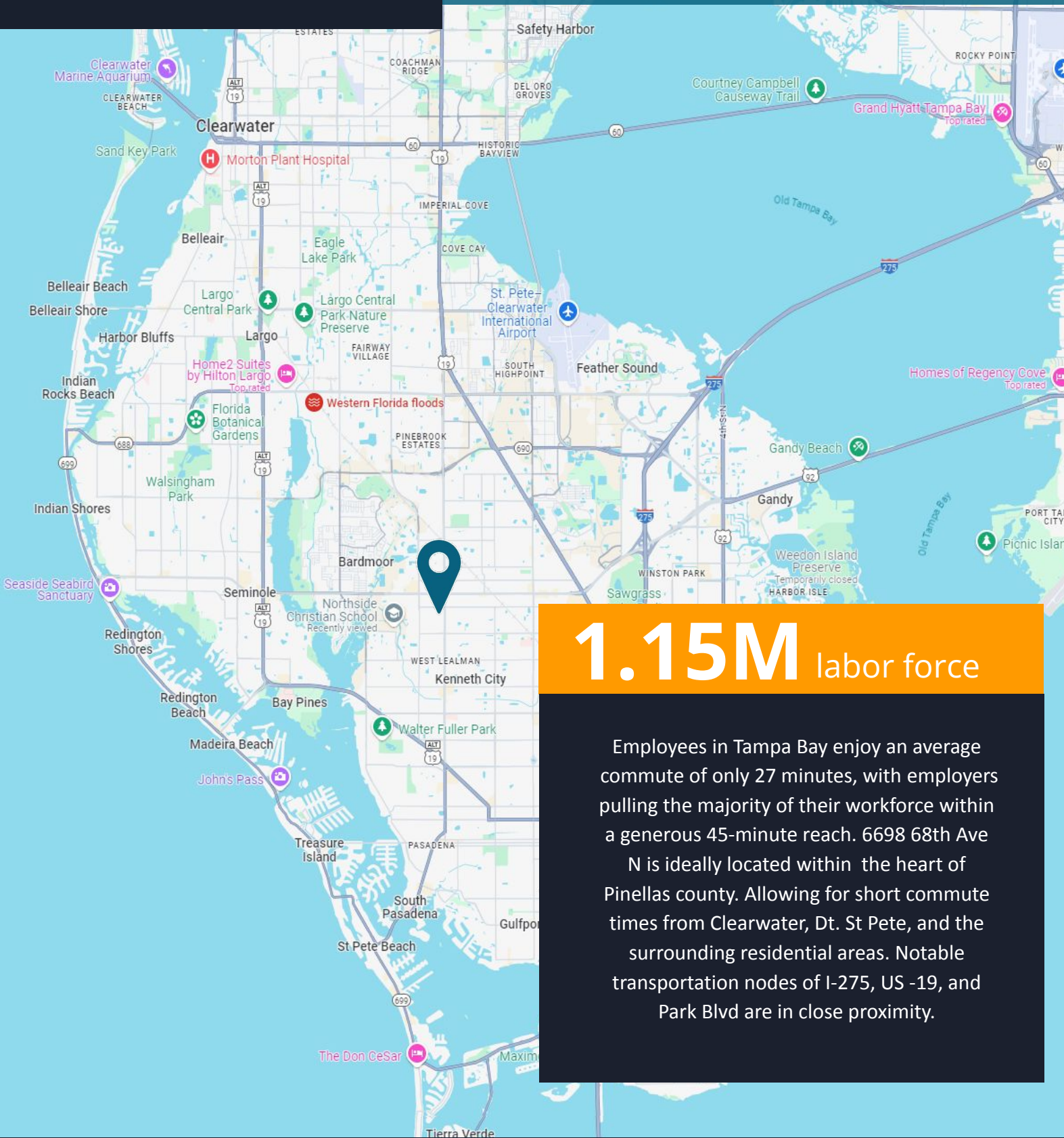


For more information:

Craig Brown
Seacrest Advisors LLC
407 312 9349 | craig.brown@seacrestadvisors.com

6698 68th AVE N

Pinellas Park, FL 33781 | For Lease

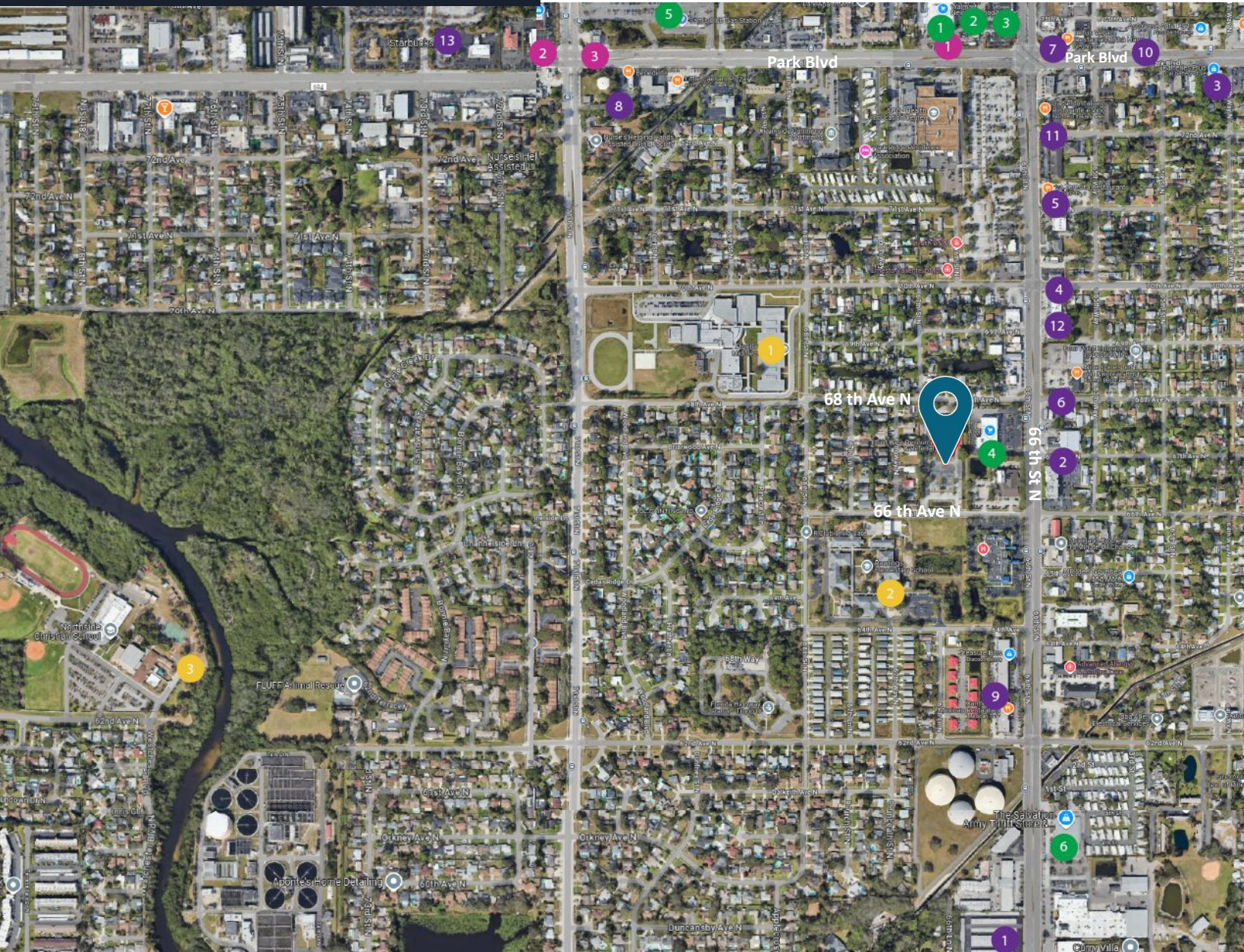


1.15M labor force

Employees in Tampa Bay enjoy an average commute of only 27 minutes, with employers pulling the majority of their workforce within a generous 45-minute reach. 6698 68th Ave N is ideally located within the heart of Pinellas county. Allowing for short commute times from Clearwater, Dt. St Pete, and the surrounding residential areas. Notable transportation nodes of I-275, US -19, and Park Blvd are in close proximity.

For more information:

Craig Brown
Seacrest Advisors LLC
407 312 9349 | craig.brown@seacrestadvisors.com



Surrounding Amenities (5 min drive)

Dining

1. Fronte
2. Nine spices hot pot & korean BBQ
3. Quan Ngon bistro
4. Wingstop
5. La Teresita Restaurant
6. Sumo Hibachi Express
7. Mino Express Hibachi Grill
8. Benedict's
9. Carmelita's Mexican Restaurant
10. Patti's Kitchen Thai Street Noodles

11. Da Sesto Italiano Ristorante e Vino
12. PL Market (Pierogis) Polish Deli
13. Starbucks

Retail / Convenience

1. Walmart
2. Park 66 Plaza
3. SKECHERS Warehouse Outlet

4. ALDI
5. Sam's Club
6. Family Store

Schools

1. Pinellas Park Middle School
2. Rawlings Elementary School
3. Northside Christian School

Banks / ATMs

1. ATM
2. Wells Fargo ATM
3. Athena Bitcoin ATM

For more information:

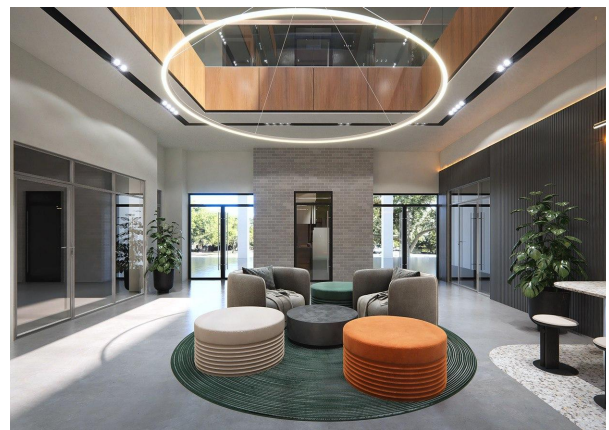
Craig Brown
 Seacrest Advisors LLC
 407 312 9349 | craig.brown@seacrestadvisors.com

6698 68th AVE N

Pinellas Park, FL 33781 | For Lease

PROPERTY PHOTOS

Parcel Size:	+/- 3.66 acres
Address:	6698 68th Ave N, Pinellas Park, FL, 33781
Year Built:	1984
Building Size:	50,138 SF
Number of Stories:	4
Parking:	203 surface spaces and 12 covered spaces
Zoning:	Commercial / Residential Office General (ROG)
Flood Zone:	X (minimal flood hazard)
Evacuation Zone:	B
Property Use:	General Office Bldg - multi-story/campus
Building Const.:	Concrete Blk/Stucco



For more information:

Craig Brown
Seacrest Advisors LLC
407 312 9349 | craig.brown@seacrestadvisors.com