

# THE PARK

NOW LEASING

  
OAKPOINT

8300

8300 N Mopac Expressway  
Austin, Texas 78759



**BUILDING OVERVIEW**

Located directly off Mopac Expressway, The Park provides easy access to a main thoroughfare of Austin, making it a short drive to The Domain and downtown. The building itself provides a professional setting with beautiful foliage and outdoor communal space.

**BUILT IN**

1999

**RENTABLE SPACE**

93,312 sf

**FLOORS**

3

**AVG FLOOR PLATE**

31,104 sf

**RENOVATED**

2023

**LOT**

6.19 acres

**PARKING RATIO**

3.62:1,000

**UNFINISHED CEILING HEIGHT**

12'



## FEATURED AMENITIES

Structured parking, outdoor communal spaces, renovated interior, and best-in-class amenities.



Newly renovated interior



Outdoor communal space



On-site showers



Surface and garage parking



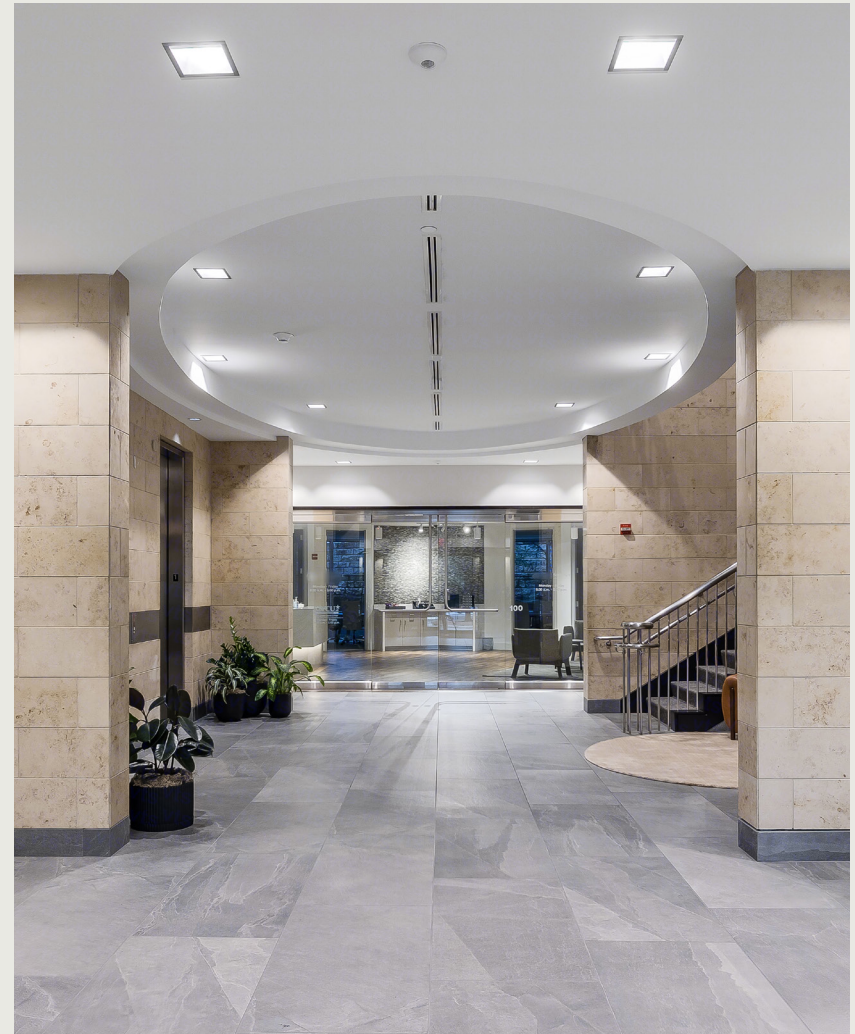
Prime proximity to The Domain and downtown



Gym & conference center from PN1 & PN2



On-site property management





# Top amenities in close proximity.

## THE PARK

### 1 SHOPS AT ARBOR WALK

Marshalls  
Chipotle  
BJ's Restaurant and Brewhouse  
Lupe Tortilla  
Mighty Fine Burgers  
Southside Market & BBQ

### 2 AUSTIN HILLS

Trader Joe's  
CAVA  
Modern Market  
Newk Eatery  
Corner Bakery  
Honest Mary

### 3 GATEWAY

Whole Foods Market  
Target  
The Arboretum  
Dave & Buster's  
IchiUmi Sushi  
Simar Seafood & Steak

### 4 THE DOMAIN

Topgolf  
Lululemon  
Nordstrom  
Dillard's  
Velvet Taco  
Apple

### 5 NORTH SHOAL CREEK

Starbucks  
P. Terry's Burger Stand  
Reunion Park  
Waterloo Ice House  
Cabo Bob's  
Jack Allen's

### 6 QUARRY

Chick-fil-A  
Whole Foods  
Target  
Trek Bicycle  
Marco's Pizza  
Schlotzsky's



AVAILABILITY

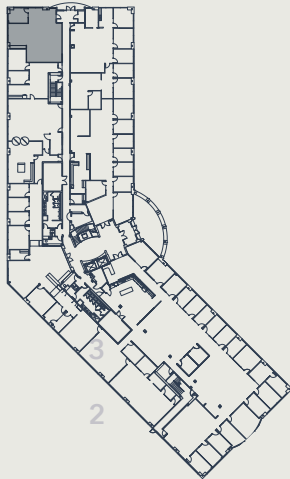
# Suite 105

SIZE

1,501 sf

AVAILABILITY  
DATE

4/1/2026



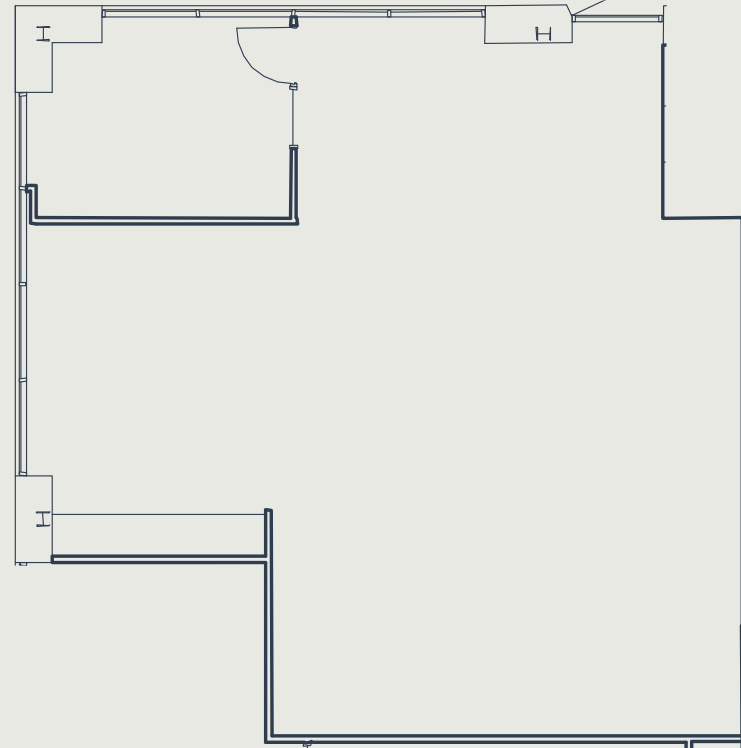
LEVEL

3

LEVEL

2

▶ LEVEL 1





**AVAILABILITY**

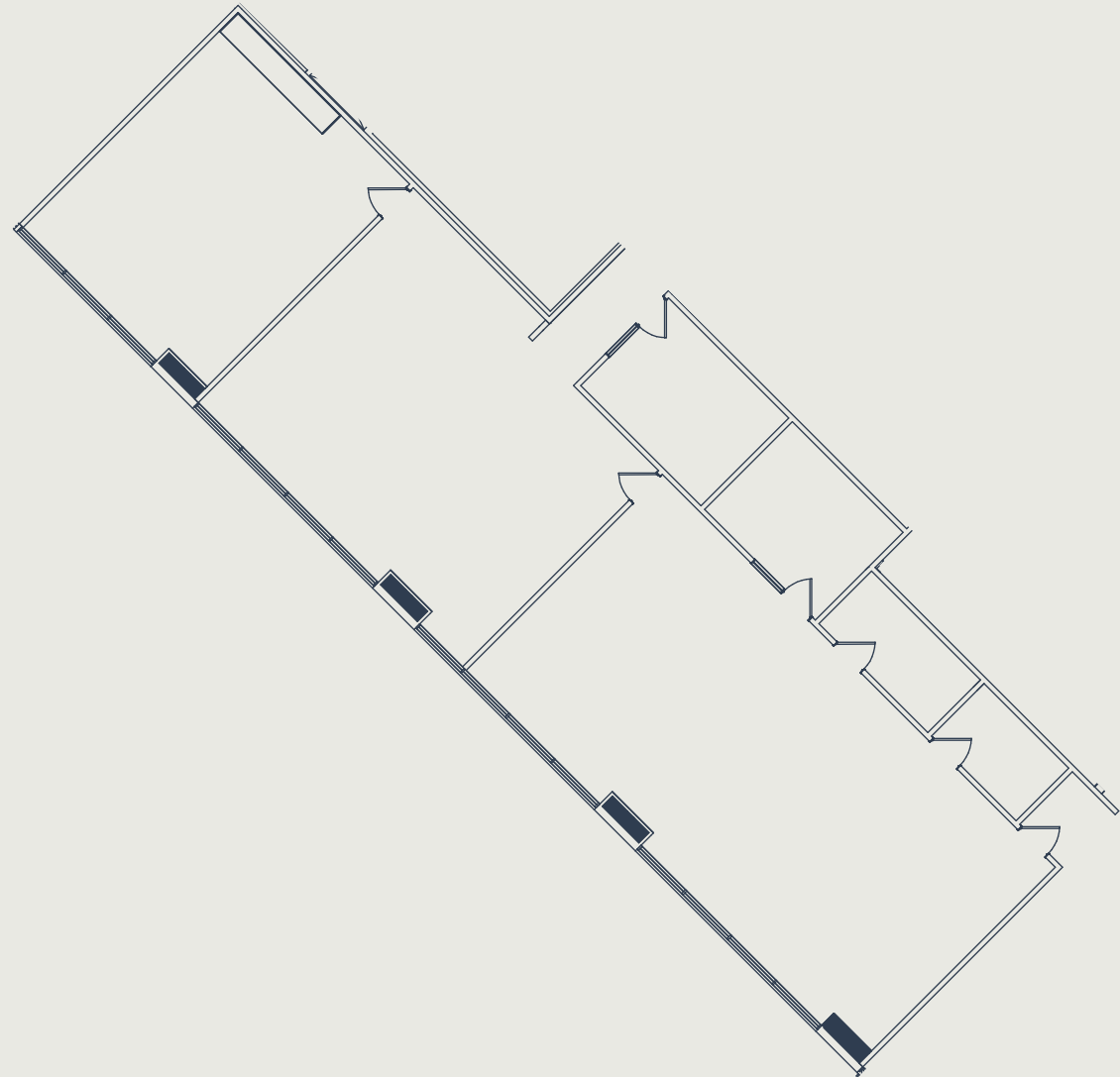
Suite 130

**SIZE**

3,430 sf

**AVAILABILITY DATE**

Available Now



LEVEL 3

LEVEL 2

▶ LEVEL 1



**AVAILABILITY**

Suite 200

**SIZE**

16,252 sf

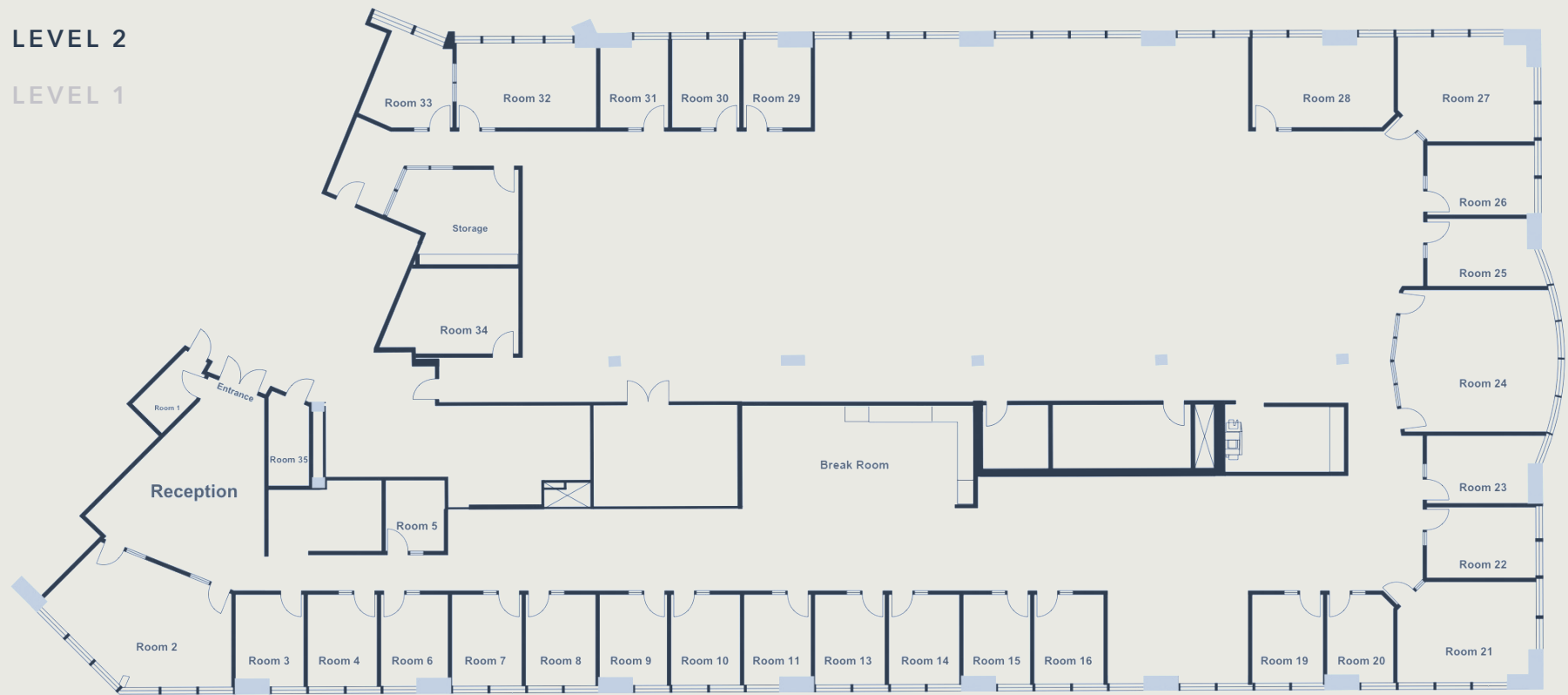
**AVAILABILITY DATE**

Available Now

LEVEL 3

▶ LEVEL 2

LEVEL 1





**AVAILABILITY**

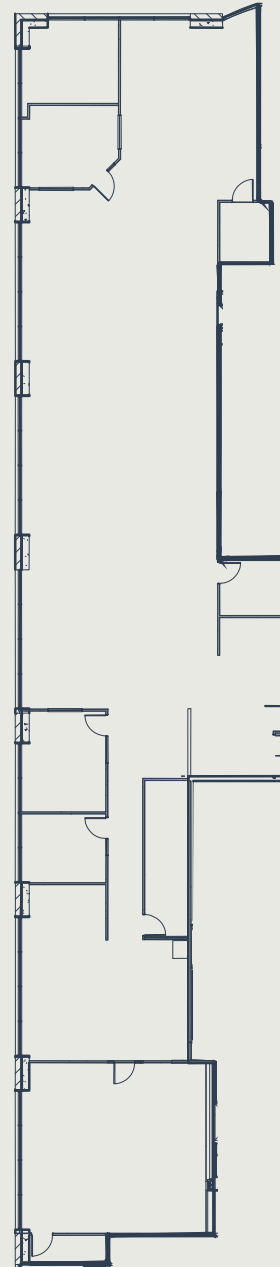
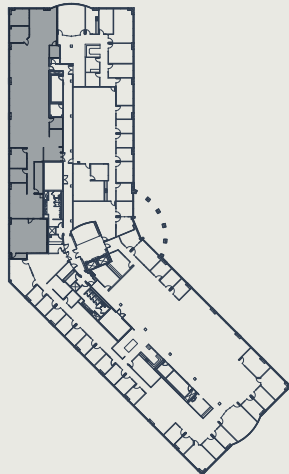
Suite 210

**SIZE**

6,911 sf

**AVAILABILITY DATE**

3/1/2026





## LEASING INFORMATION

The Park is locally owned and operated by OakPoint, a vertically integrated firm with a diverse portfolio in commercial, multifamily, office, residential, and industrial real estate.

For leasing information, please contact:

### **RYAN BUSCHA**

Director

O (512) 975-2253

E [rbuscha@oakpointre.com](mailto:rbuscha@oakpointre.com)

### **DAN FRICKS**

Leasing

O (512) 640-6278

E [dfricks@oakpointre.com](mailto:dfricks@oakpointre.com)

**OAKPOINT** 