



LARGE RETAIL SPACE FOR LEASE
IN DOWNTOWN UKIAH
728 S. STATE STREET, UKIAH, CA 95482

101 N STATE STREET, | UKIAH, CA 95482 | WCOMMERCIALRE.COM

RETAIL PROPERTY FOR LEASE



FOR MORE INFORMATION:

TODD SCHAPMIRE

707.570.9855

TODD@WREALESTATE.NET

CALDRE #01414195

LARGE RETAIL SPACE FOR LEASE IN DOWNTOWN UKIAH

728 S. STATE STREET, UKIAH, CA 95482

EXECUTIVE SUMMARY



OFFERING SUMMARY

Lease Rate:	\$1.25 / SF / Month
Lease Type:	Modified Goss
Building Size:	7,452 SF
Available SF:	5,520 SF
Lot Size:	0.4 Acres
Year Built:	1999
Zoning:	CL
Parking Ratio:	3.38

PROPERTY OVERVIEW

Large retail space for lease in the heart of Ukiah! The property is approximately 5,520 square feet with a spacious, open floor plan, storefront windows, and a back office. Space can be demised into two approximately 2,500 square foot spaces. Approximately 20 parking spaces on site and easy access from South State Street offer customer convenience. Located next to Domino's and Ellie's and close to Wells Fargo, Ukiah Natural Food Co-Op, Safeway, Rite Aid, and Chase.



TODD SCHAPMIRE
707.570.9855
TODD@WREALESTATE.NET
CALDRE #01414195

The above information, while not guaranteed, has been secured from sources we believe to be reliable. Submitted subject to error, change or withdrawal. An interested party should verify the status of the property and the information herein.

LARGE RETAIL SPACE FOR LEASE IN DOWNTOWN UKIAH

728 S. STATE STREET, UKIAH, CA 95482

PHOTOS



TODD SCHAPMIRE
707.570.9855
TODD@WREALESTATE.NET
CALDRE #01414195

The above information, while not guaranteed, has been secured from sources we believe to be reliable. Submitted subject to error, change or withdrawal. An interested party should verify the status of the property and the information herein.

LARGE RETAIL SPACE FOR LEASE IN DOWNTOWN UKIAH

728 S. STATE STREET, UKIAH, CA 95482

AERIAL MAP



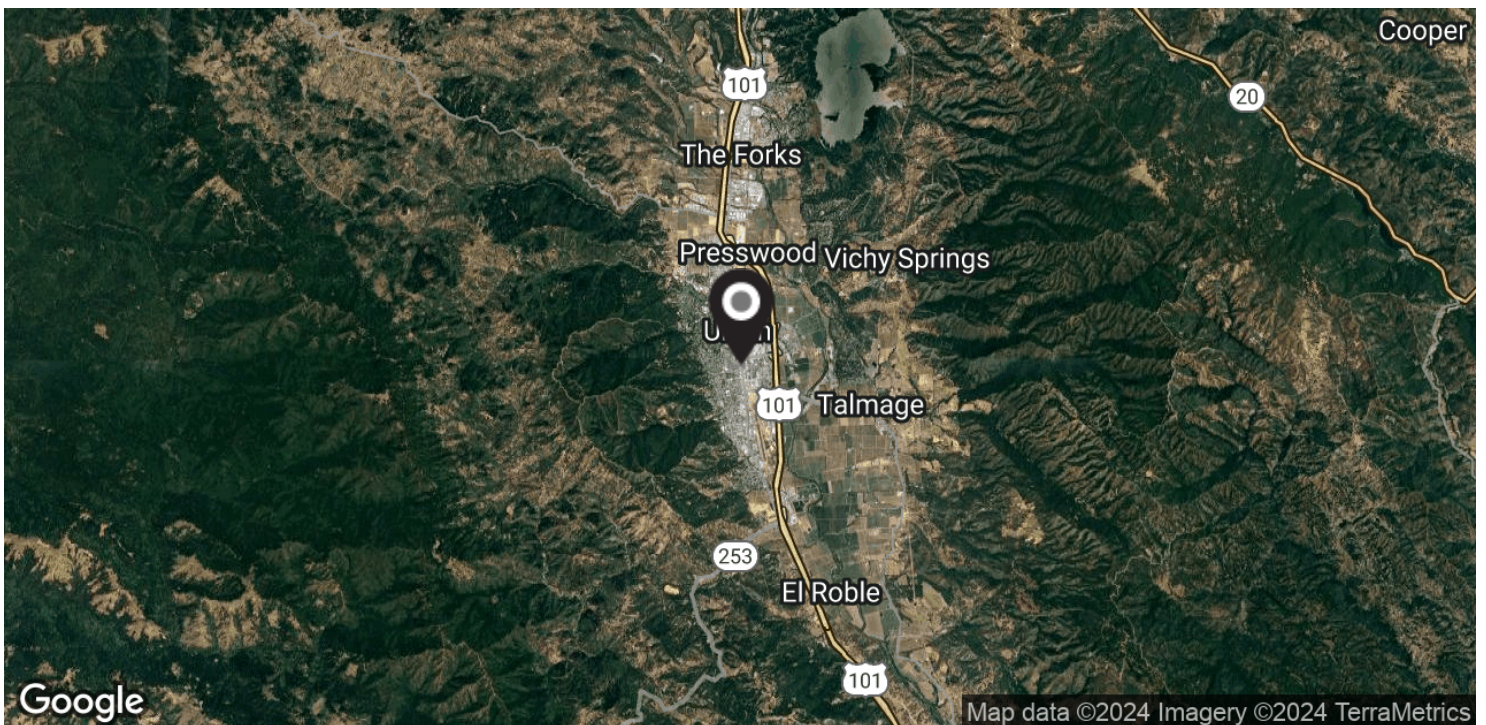
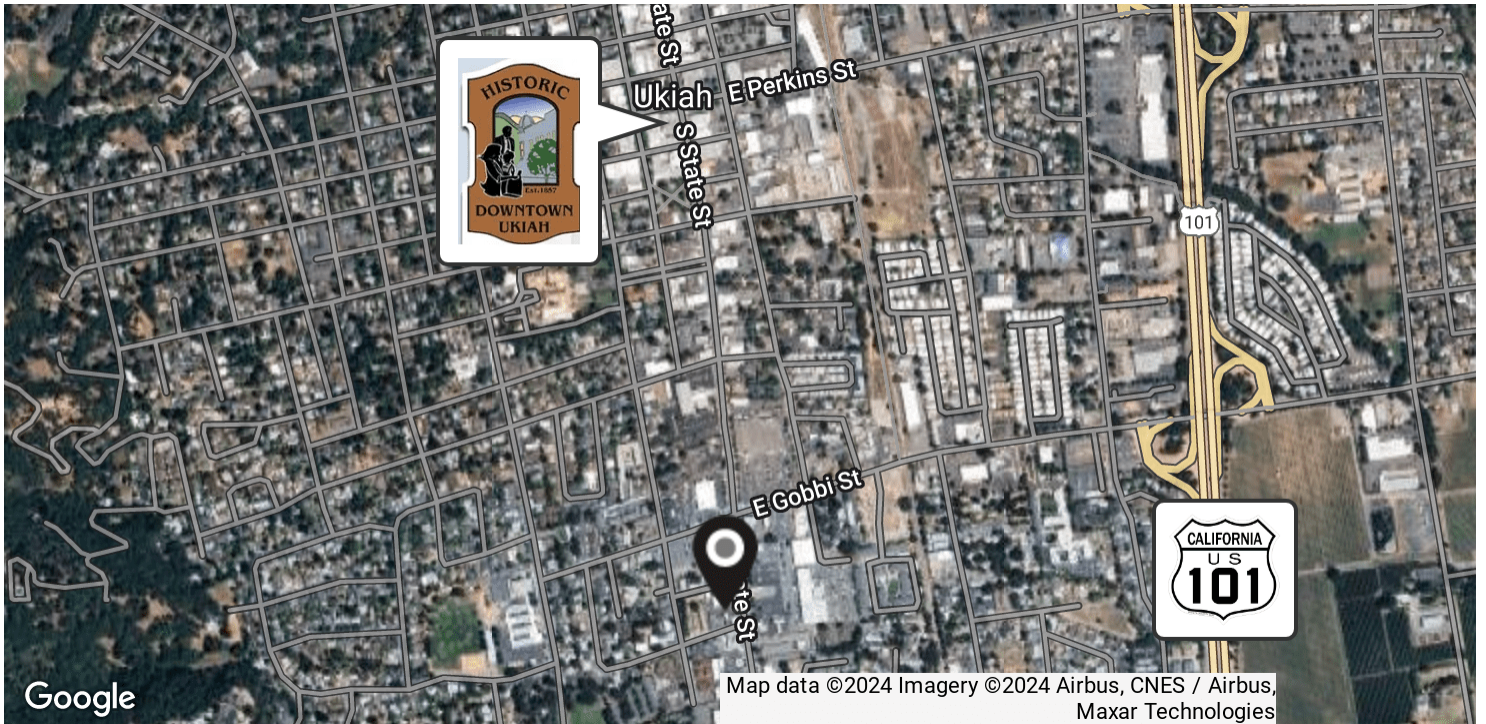
TODD SCHAPMIRE
707.570.9855
TODD@WREALESTATE.NET
CALDRE #01414195

The above information, while not guaranteed, has been secured from sources we believe to be reliable. Submitted subject to error, change or withdrawal. An interested party should verify the status of the property and the information herein.

LARGE RETAIL SPACE FOR LEASE IN DOWNTOWN UKIAH

728 S. STATE STREET, UKIAH, CA 95482

LOCATION MAP



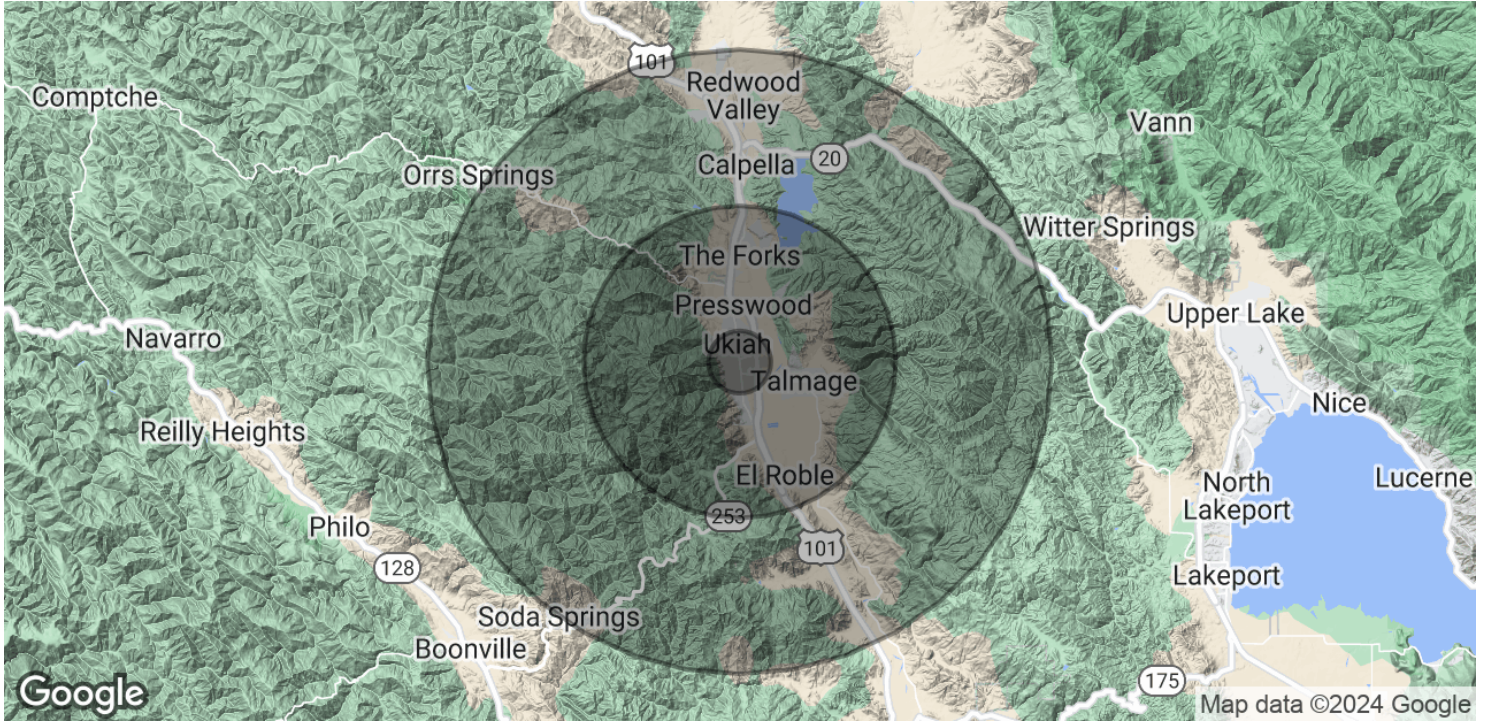
TODD SCHAPMIRE
707.570.9855
TODD@WREALESTATE.NET
CALDRE #01414195

The above information, while not guaranteed, has been secured from sources we believe to be reliable. Submitted subject to error, change or withdrawal. An interested party should verify the status of the property and the information herein.

LARGE RETAIL SPACE FOR LEASE IN DOWNTOWN UKIAH

728 S. STATE STREET, UKIAH, CA 95482

DEMOGRAPHICS MAP & REPORT



POPULATION	1 MILE	5 MILES	10 MILES
Total Population	10,153	27,356	34,977
Average Age	37.0	37.0	39.3
Average Age (Male)	32.8	36.0	38.5
Average Age (Female)	43.4	38.2	40.0
HOUSEHOLDS & INCOME	1 MILE	5 MILES	10 MILES
Total Households	4,008	10,639	13,948
# of Persons per HH	2.5	2.6	2.5
Average HH Income	\$71,208	\$70,858	\$73,185
Average House Value	\$310,026	\$329,472	\$359,910

* Demographic data derived from 2020 ACS - US Census



TODD SCHAPMIRE
 707.570.9855
 TODD@WREALESTATE.NET
 CALDRE #01414195

The above information, while not guaranteed, has been secured from sources we believe to be reliable. Submitted subject to error, change or withdrawal. An interested party should verify the status of the property and the information herein.