

AVAILABLE FOR LEASE

DOWNTOWN
ASHEVILLE

29 College Place



1091 Hendersonville Road
Asheville, NC 28803

828-274-2479

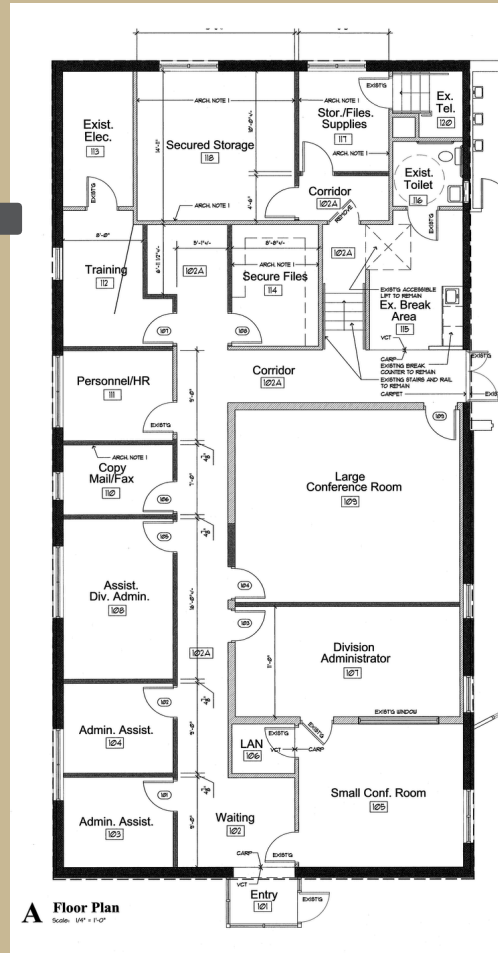
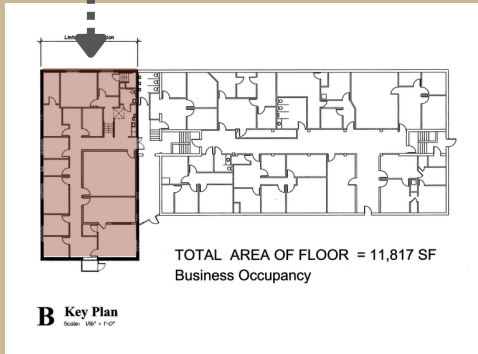
LewisRealEstateNC.com



PRIME DOWNTOWN OFFICE SPACE

FLOORPLAN | OVERVIEW

3,422 sf
Office
Space



NEWLY RENOVATED SPACE

LEASE RATE: \$27/sf - No CAM

UTILITIES & JANITORIAL SERVICES: Included

PARKING: Centrally located with easy access and abundant parking

FEATURES: Big windows and high ceilings create an airy and lively atmosphere. Neighbors include Explore Asheville, Asheville Symphony, Girl Scouts, and the Element Hotel.



29 COLLEGE PLACE | ASHEVILLE, NC 28801



KEY FEATURES

- Waiting Area
- Multiple Offices
- Ample Storage
- 2 Conference Rooms
- Break Room
- Flexible Spaces

CONVENIENT LOCATION

DOWNTOWN
ASHEVILLE

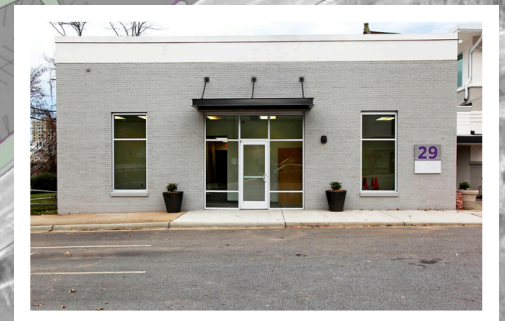
29 College Place



1091 Hendersonville Road
Asheville, NC 28803

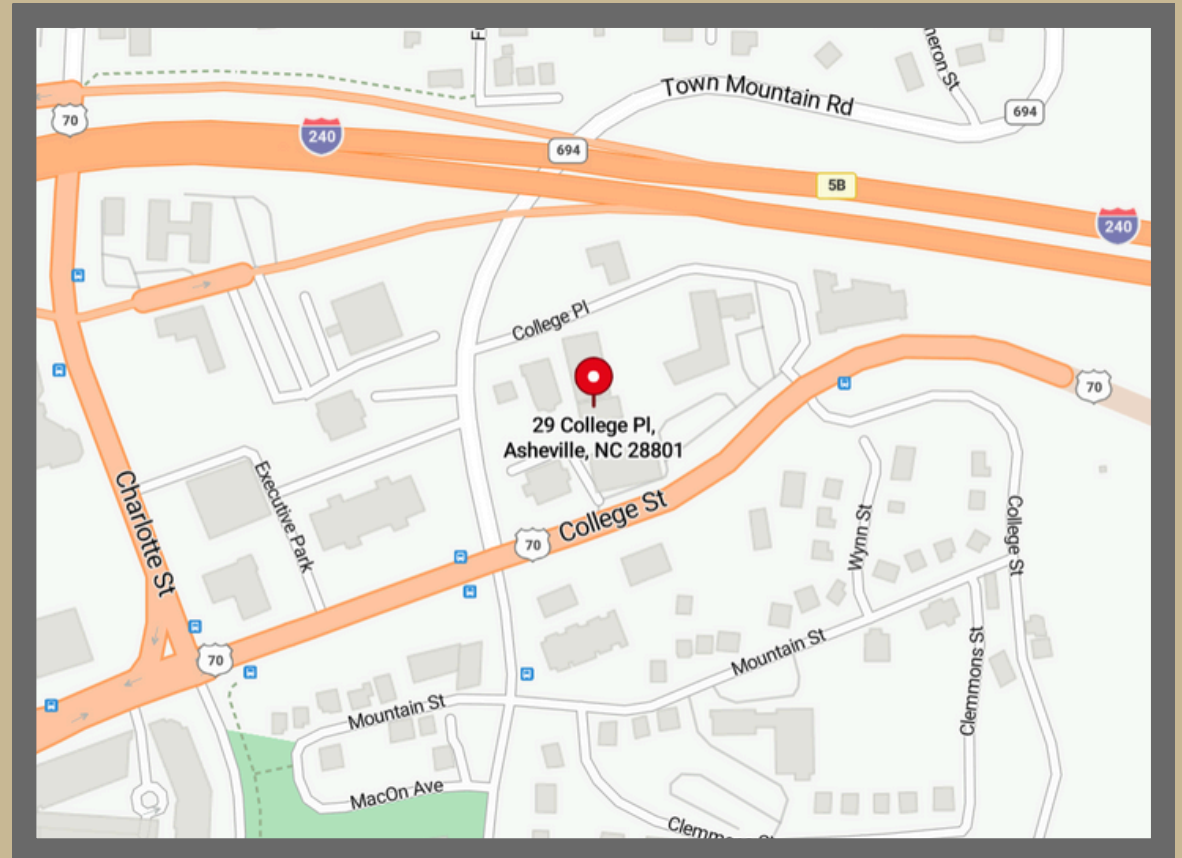
828-274-2479

LewisRealEstateNC.com



PROFESSIONAL OFFICE SPACE

Easy access downtown Asheville location
just off I-240 and Tunnel Road!



1091 Hendersonville Road
Asheville, NC 28803

828-274-2479

LewisRealEstateNC.com

29 COLLEGE PLACE | ASHEVILLE, NC 28801