



CEDAR RUN BUSINESS PARK

4517 GETTYSBURG RD, MECHANICSBURG, PA 17055

NEW 110,000 SF (2) BUILDING FLEX PROJECT



UNDER CONSTRUCTION!

WWW.LANDMARKCR.COM
(717) 731.1990

TCN
WORLDWIDE
REAL ESTATE SERVICES



CEDAR RUN BUSINESS PARK

**NEW FLEX PROPERTY
FOR LEASE**

CONSTRUCTION UPDATE - NOVEMBER 2025



ROSSMOYNE RD - WESLEY DR



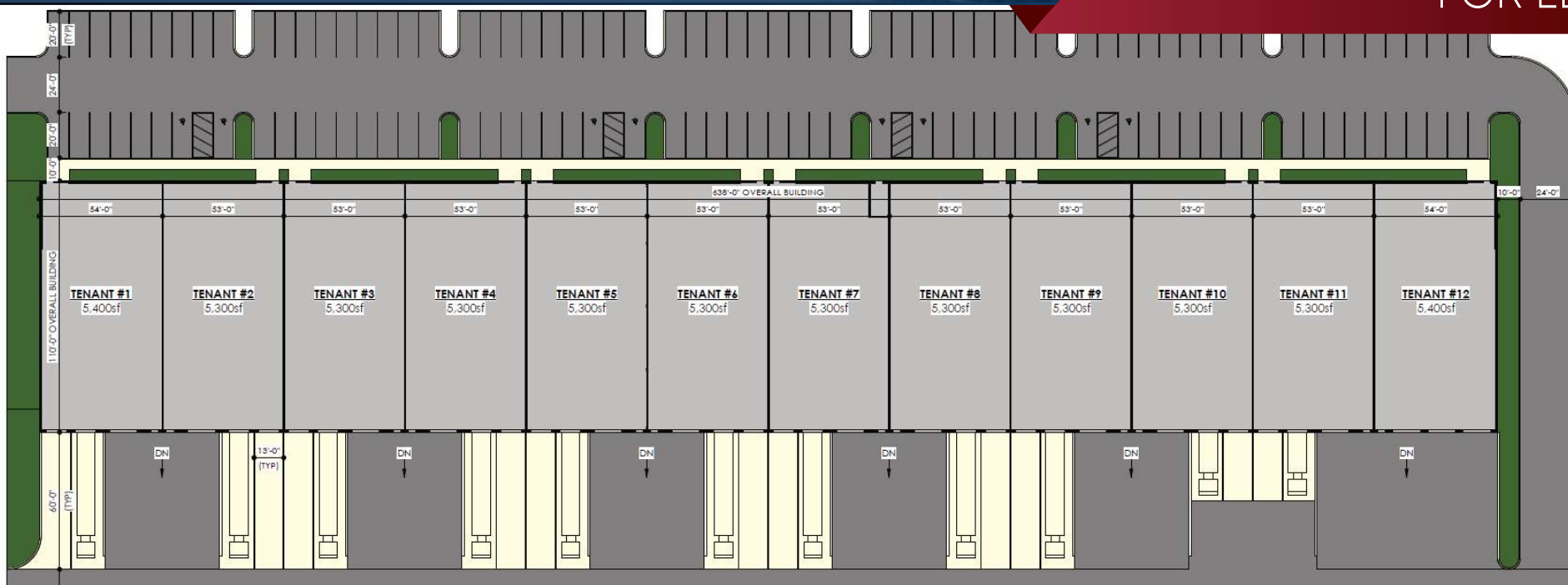
LANDMARK COMMERCIAL REALTY
425 N 21ST STREET, SUITE 302
CAMP HILL, PA 17011
P : 717.731.1990

JASON GRACE, CCIM, SIOR
CEO & MANAGING PRINCIPAL
E: JGRACE@LANDMARKCR.COM
C: 717.421.1943

MICHAEL CURRAN, SIOR
PRESIDENT & MANAGING DIRECTOR
E: MCURRAN@LANDMARKCR.COM
C: 717.805.9277




LANDMARKCR.COM



OFFERING SUMMARY

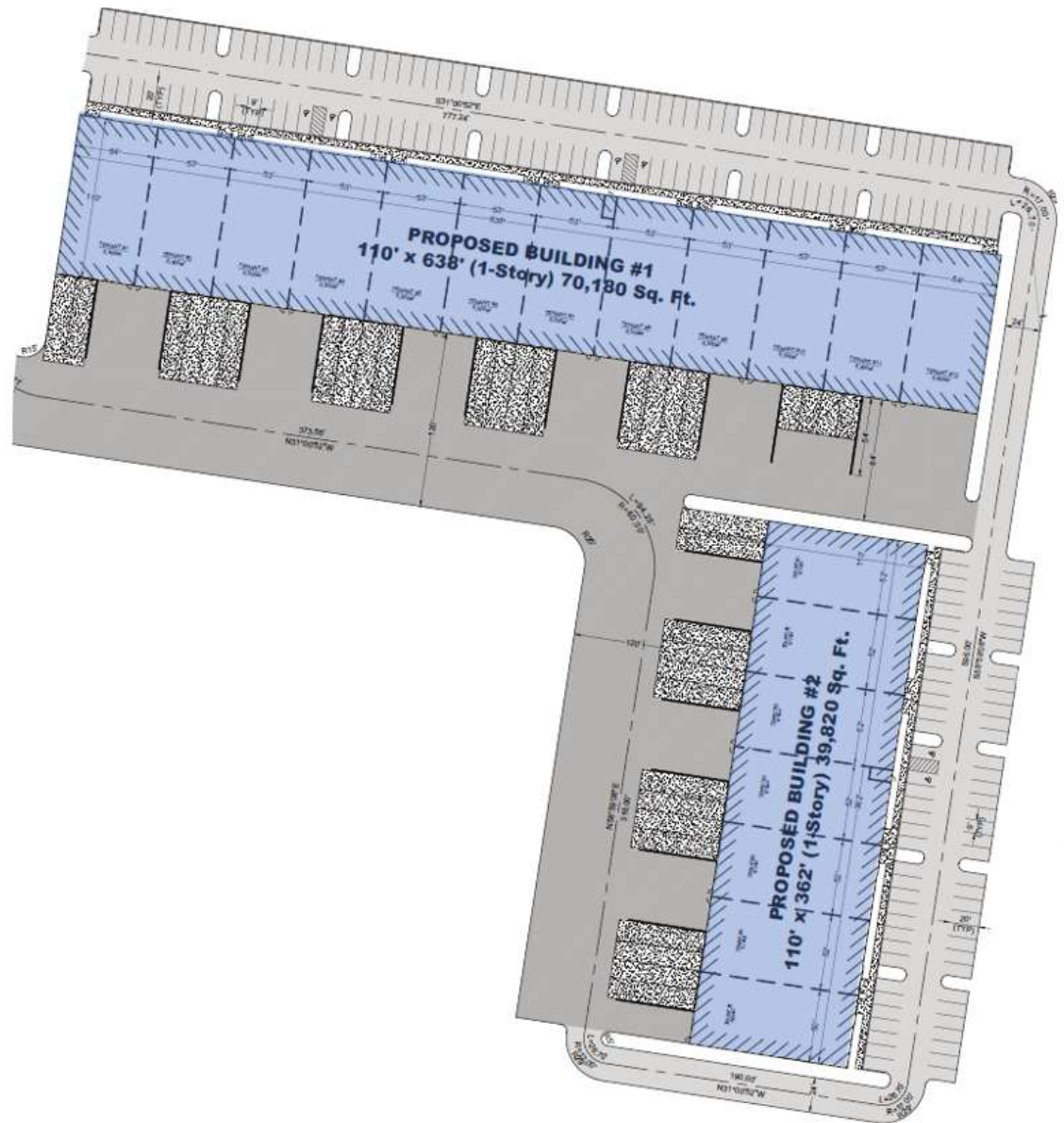
Available SF	5,300 - 110,000 SF
Building 1 SF	70,180 SF
Building 2 SF	39,820 SF
Lease Rate	Negotiable
Lot Size	±16.7 Acres
Delivery	Q4 2026
County	Cumberland
Municipality	Lower Allen Twp
Zoning	General Commercial

PROPERTY HIGHLIGHTS

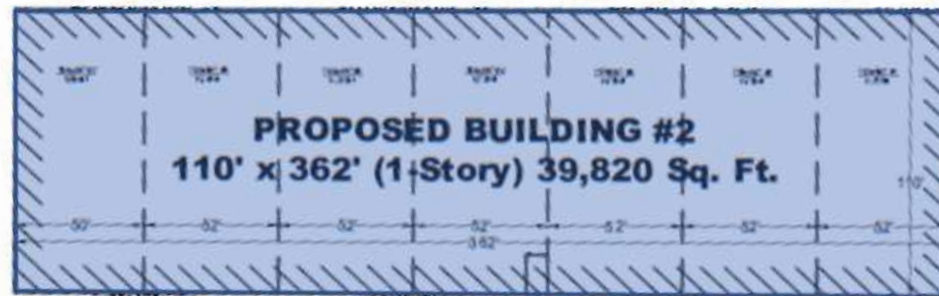
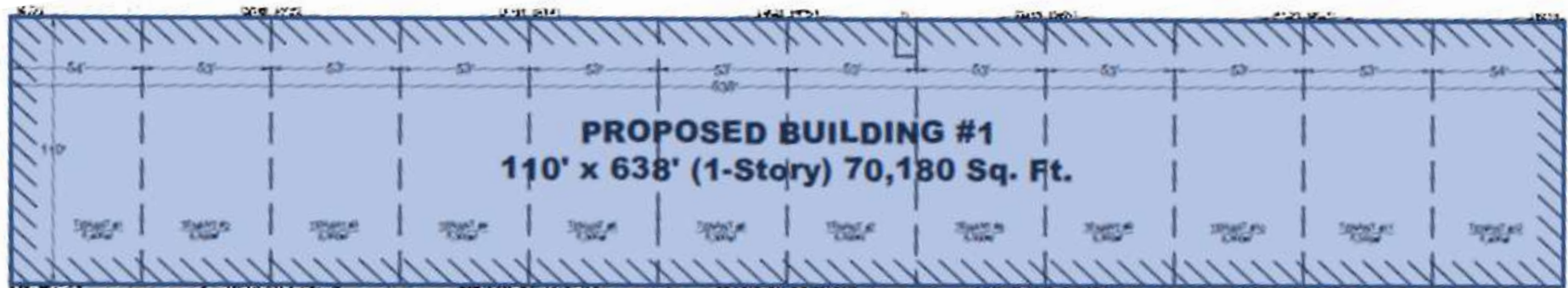
- Now Under Construction! New speculative construction flex property for lease adjacent to US-15 in Lower Allen Township, delivering Q4 2026
- Rare 39,820 SF & 70,180 SF building sizes sitting on a ±16.7 acre lot that offers ample parking
- Space starting at 5,300 SF with dedicated private access and loading
- High profile property with signature visibility & signage along US-15
- Zoned in General Commercial District which allows for flexible permitted uses
- Located just off **15** with easy access to: 
- Check out the Construction update: <https://vimeo.com/1145996720>

PROPERTY DETAILS

Property Address	4517 Gettysburg Rd Mechanicsburg, PA 17055
Property Type	Flex Commercial
Lot Size	16.7 AC
Total Building Size	110,000 SF
Building 1	70,180 SF
Building 2	39,820 SF
Car Parking	197 spaces
Trailer Parking	Ample
Route Vehicles Spaces	Opposite Loading Wall
Dock Doors	2 per bay (9'x10')
Drive-in Doors	1 per bay (12'x14')
Foundation	Concrete Masonry
Framing	Steel
Roof	Rubber
Clear Ceiling Height	21' - 22'
Sprinklers	Yes- ESFR
HVAC	Gas
Electric	3-Phase
Water/Sewer	Public
Submarket	Harrisburg West
County	Cumberland
Municipality	Lower Allen Township
Zoning	General Commercial



AVAILABILITY



LEASE INFORMATION

SUITE	AVAILABLE SF	BUILDING SIZE	LEASE RATE	DELIVERY DATE
BUILDING 1	5,300 - 110,000 SF	70,180 SF	Negotiable	Q4 2026
BUILDING 2	5,300 - 110,000 SF	39,820 SF	Negotiable	Q4 2026

AERIAL - NOVEMBER 2025



LANDMARK COMMERCIAL REALTY
425 N 21ST STREET, SUITE 302
CAMP HILL, PA 17011
P : 717.731.1990

JASON GRACE, CCIM, SIOR
CEO & MANAGING PRINCIPAL
E: JGRACE@LANDMARKCR.COM
C: 717.421.1943

MICHAEL CURRAN, SIOR
PRESIDENT & MANAGING DIRECTOR
E: MCURRAN@LANDMARKCR.COM
C: 717.805.9277

TCN
WORLDWIDE
REAL ESTATE SERVICES

LANDMARKCR.COM



CEDAR RUN BUSINESS PARK

**NEW FLEX PROPERTY
FOR LEASE**

AERIAL - NOVEMBER 2025



LANDMARK COMMERCIAL REALTY
425 N 21ST STREET, SUITE 302
CAMP HILL, PA 17011
P : 717.731.1990

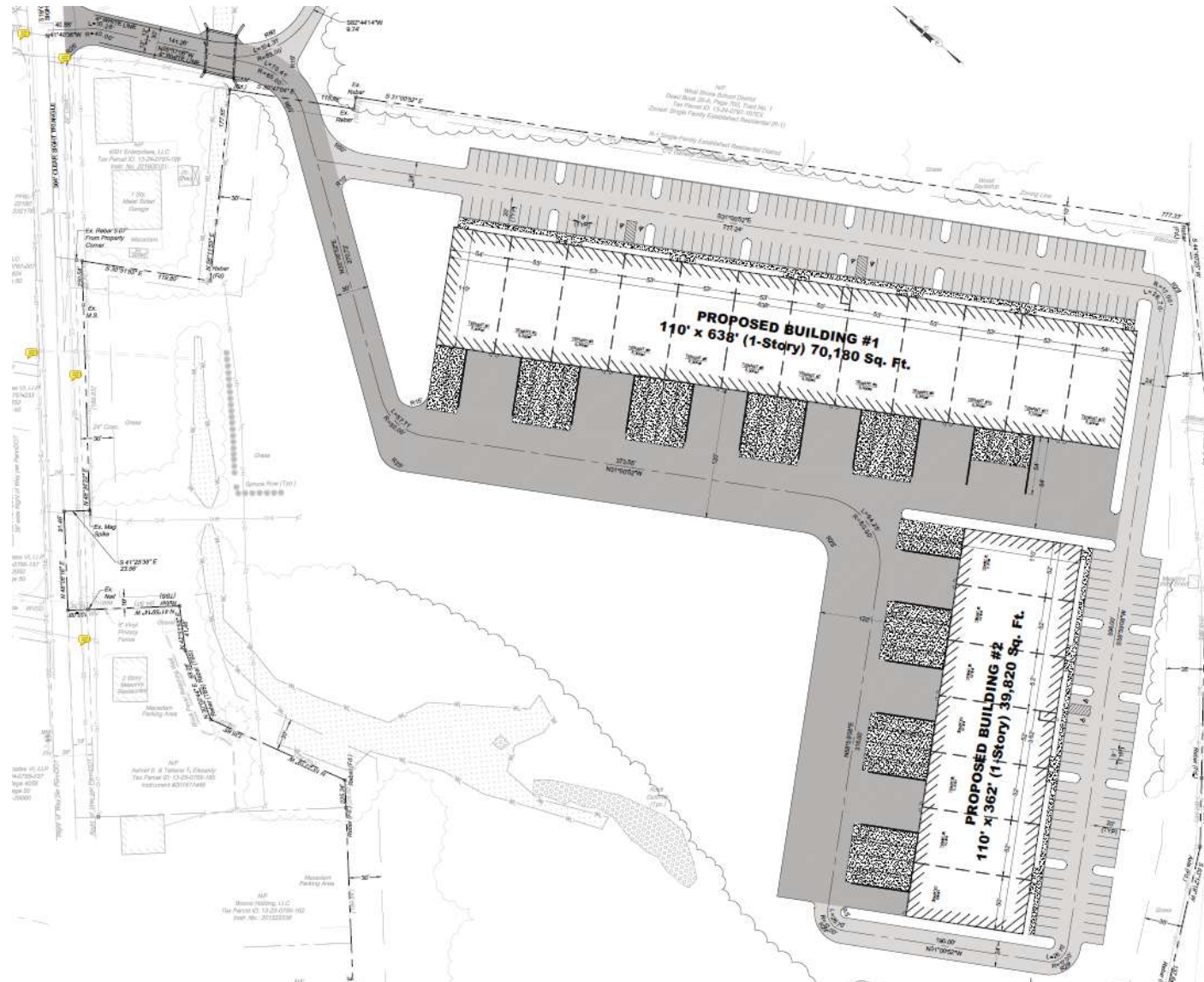
JASON GRACE, CCIM, SIOR
CEO & MANAGING PRINCIPAL
E: JGRACE@LANDMARKCR.COM
C: 717.421.1943

MICHAEL CURRAN, SIOR
PRESIDENT & MANAGING DIRECTOR
E: MCURRAN@LANDMARKCR.COM
C: 717.805.9277



LANDMARKCR.COM

SITE PLAN





CEDAR RUN BUSINESS PARK

**NEW FLEX PROPERTY
FOR LEASE**

CONCEPT RENDERING



LANDMARK COMMERCIAL REALTY
425 N 21ST STREET, SUITE 302
CAMP HILL, PA 17011
P : 717.731.1990

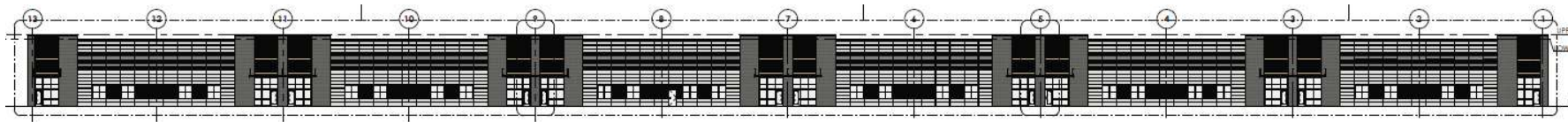
JASON GRACE, CCIM, SIOR
CEO & MANAGING PRINCIPAL
E: JGRACE@LANDMARKCR.COM
C: 717.421.1943

MICHAEL CURRAN, SIOR
PRESIDENT & MANAGING DIRECTOR
E: MCURRAN@LANDMARKCR.COM
C: 717.805.9277

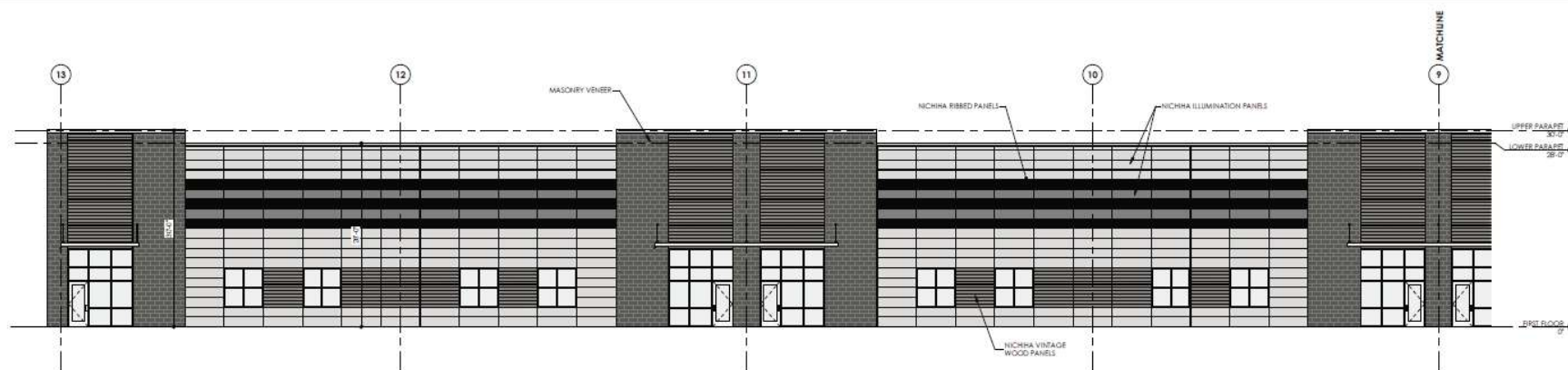


LANDMARKCR.COM

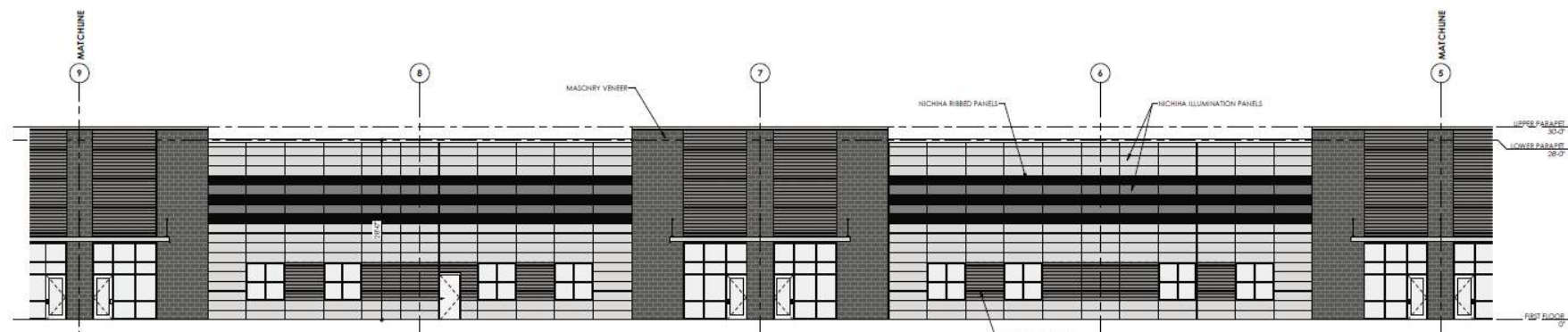
ELEVATION PLANS



1 EAST ELEVATION
3/8" = 1'-0"



A ENLARGED EAST ELEVATION 'A'
1/8" = 1'-0"



AERIAL



LANDMARK COMMERCIAL REALTY
425 N 21ST STREET, SUITE 302
CAMP HILL, PA 17011
P : 717.731.1990

JASON GRACE, CCIM, SIOR
CEO & MANAGING PRINCIPAL
E: JGRACE@LANDMARKCR.COM
C: 717.421.1943

MICHAEL CURRAN, SIOR
PRESIDENT & MANAGING DIRECTOR
E: MCURRAN@LANDMARKCR.COM
C: 717.805.9277

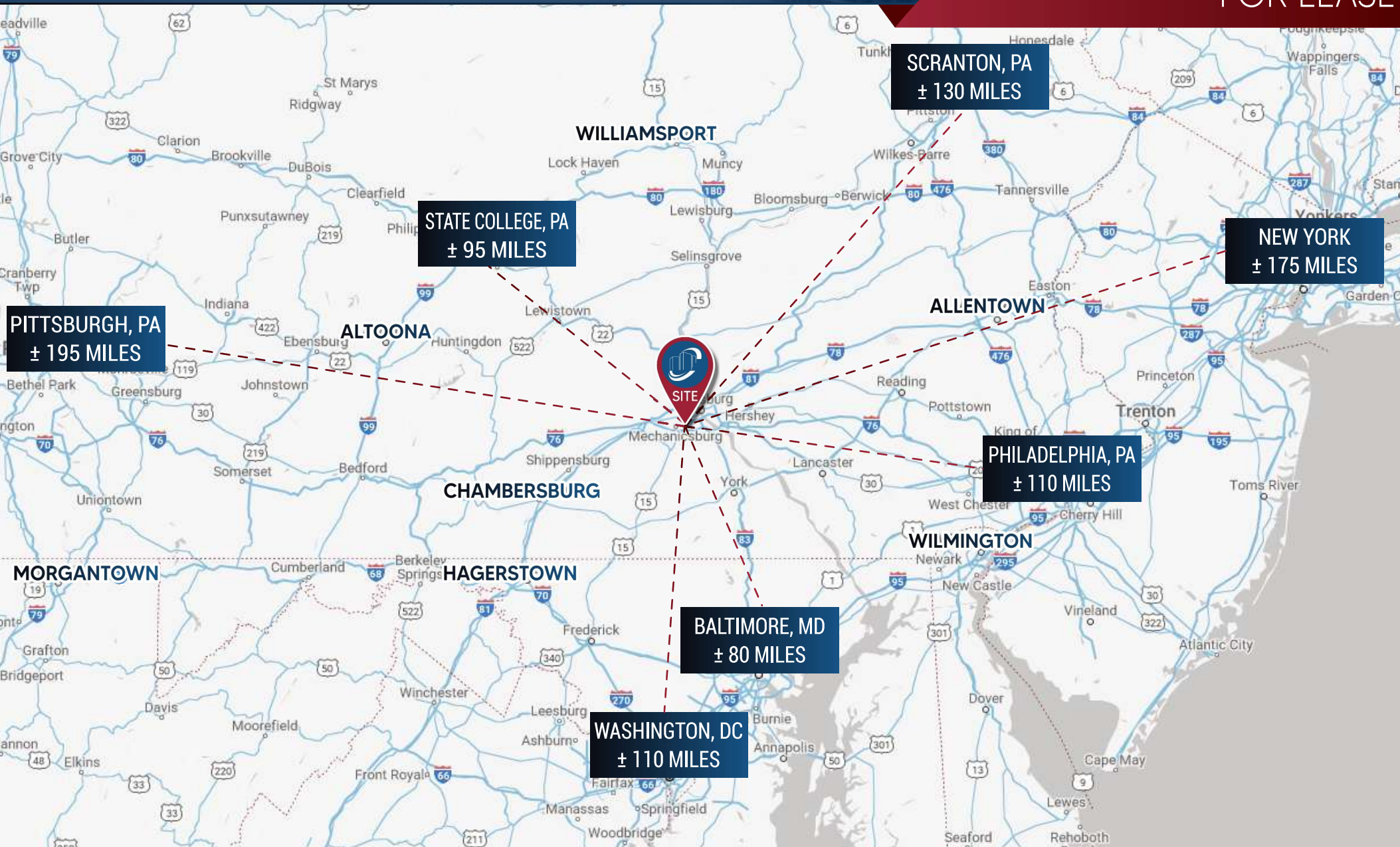
TCN
WORLDWIDE
REAL ESTATE SERVICES

LANDMARKCR.COM

11

TRADE AERIAL





AREA OVERVIEW

CUMBERLAND COUNTY: Cumberland County is located in the Harrisburg-Carlisle MSA, neighboring the State Capital city of Harrisburg on the West Shore of the Susquehanna River. Cumberland County has 9 school districts, 8 public libraries, and 4 hospitals. There are two military operation facilities in Cumberland County - Carlisle Barracks / U.S. Army War College and the Naval Support Station in Mechanicsburg. These military facilities help support the national security of our country while also employing civilian personnel, thus aiding in a strong local economy.

As part of the Susquehanna Valley, Cumberland County is bounded to the north by Blue Mountain, to the east by the Susquehanna River, to the southeast by Yellow Breeches Creek, and to the south by the Blue Ridge Mountains. Conodoguinet Creek and the Appalachian National Scenic Trail cross the county. Parklands include Michaux State Forest and Colonel Denning, Kings Gap, and Pine Grove Furnace state parks.

The oldest towns in the county are Shippensburg, Pennsylvania, and Carlisle, Pennsylvania, each with its unique history. Shippensburg is home to Shippensburg University of Pennsylvania, one of 14 universities of the Pennsylvania State System of Higher Education. Carlisle is also home to Dickinson College, established in 1773, and the Penn State Dickinson School of Law.

Cumberland county contains many suburbs of nearby Harrisburg such as Mechanicsburg, Camp Hill, New Cumberland, and Lemoyne. The primary economic activities are services, retail trade, manufacturing (electronic components and textiles), and agriculture (field crops, livestock, and dairy products).

TOP EMPLOYERS

FEDERAL GOVERNMENT
GIANT FOOD STORES, LLC
AMAZON.COM DEDC LLC
STATE GOVERNMENT

KEY INDUSTRIES

EDUCATION
FOOD PROCESSING & AGRIBUSINESS
HEALTHCARE
MANUFACTURING



2025 ESTIMATED
POPULATION **263,782**

DEMOGRAPHICS



CONFIDENTIALITY & DISCLAIMER

All materials and information received or derived from Landmark Commercial its directors, officers, agents, advisors, affiliates and/or any third party sources are provided without representation or warranty as to completeness, veracity, or accuracy, condition of the property, compliance or lack of compliance with applicable governmental requirements, develop ability or suitability, financial performance of the property, projected financial performance of the property for any party's intended use or any and all other matters.

Neither Landmark Commercial its directors, officers, agents, advisors, or affiliates makes any representation or warranty, express or implied, as to accuracy or completeness of the any materials or information provided, derived, or received. materials and information from any source, whether written or verbal, that may be furnished for review are not a substitute for a party's active conduct of its own due diligence to determine these and other matters of significance to such party. Landmark Commercial will not investigate or verify any such matters or conduct due diligence for a party unless otherwise agreed in writing.

EACH PARTY SHALL CONDUCT ITS OWN INDEPENDENT INVESTIGATION AND DUE DILIGENCE.

Any party contemplating or under contract or in escrow for a transaction is urged to verify all information and to conduct their own inspections and Investigations including through appropriate third party independent professionals selected by such party. All financial data should be verified by the party including by obtaining and reading applicable documents and reports and consulting appropriate independent professionals. Landmark Commercial makes no warranties and/or representations regarding the veracity, completeness, or relevance of any financial data or assumptions. Landmark Commercial does not serve as a financial advisor to any party regarding any proposed transaction. All data and assumptions regarding financial performance, including that used for financial modeling purposes, may differ from actual data or performance. Any estimates of market rents and/or projected rents that may be provided to a party do not necessarily mean that rents can be established at or increased to that level. Parties must have evaluate any applicable contractual and governmental limitations as well as market conditions, vacancy factors and other issues in order to determine rents from or for the property.

Legal questions should be discussed by the party with an attorney. Tax questions should be discussed by the party with a certified public accountant of tax attorney. Title questions should be discussed by the party with a title officer or attorney. Questions regarding the condition of the property and whether the property complies with applicable governmental requirements should be discussed by the party with appropriate engineers, architects, contractors, other consultants and governmental agencies. All properties and services are marketed by Landmark Commercial in compliance with all applicable fair housing and equal opportunity laws.



NEW CONSTRUCTION FLEX BUSINESS PARK NOW LEASING

JASON GRACE, CCIM, SIOR
CEO & MANAGING PRINCIPAL
E: JGRACE@LANDMARKCR.COM
C: 717.421.1943

MICHAEL CURRAN, SIOR
PRESIDENT & EXECUTIVE MANAGING DIRECTOR
E: MCURRAN@LANDMARKCR.COM
C: 717.805.9277

LANDMARK COMMERCIAL REALTY
425 N 21st STREET, SUITE 302
CAMP HILL, PA 17011
P: 717.731.1990 F: 717.731.8765

