



5357 W. Addison Street

CHICAGO, ILLINOIS

Drive-thru Retail Development Site Available
 Southeast corner of Addison and Long

FOR MORE INFORMATION, PLEASE CONTACT

ANTHONY CAMPAGNI • 847.651.8669
 ac@canvasrealestate.com

ELAN RASANSKY • 414.380.1555
 elan@canvasrealestate.com

MICHAEL WALLACE • 614.537.2403
 mwallace@canvasrealestate.com

DEMOGRAPHICS



54.8k+
Total Population
1 Mile

15.1k+ 3.66k+
0.5 Miles 0.25 Miles



\$101k+
Average HH Income
1 Mile

\$102k+ \$106k+
0.5 Miles 0.25 Miles

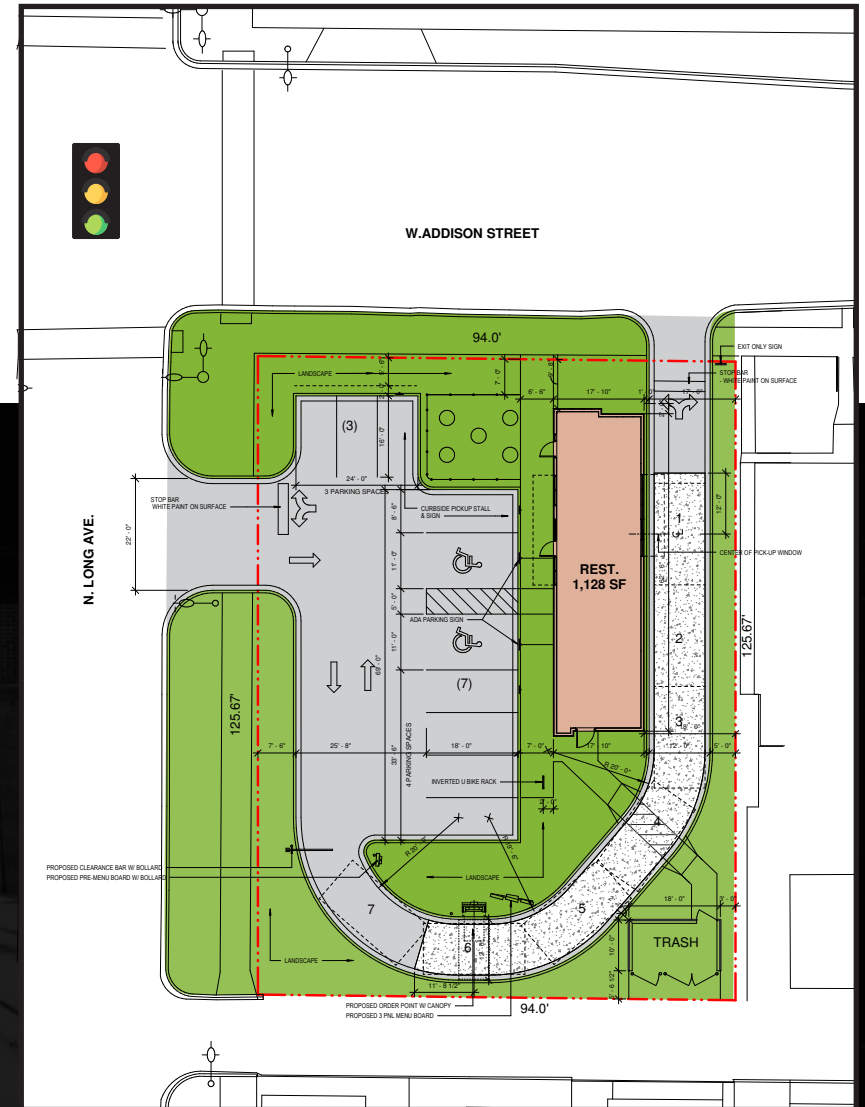


38.6k+
Daytime Population
1 Mile

10.2k+ 1.88k+
0.5 Miles 0.25 Miles

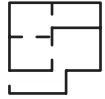
PORTAGE PARK

- An in-fill intersection on the northwest side of Chicago.
- Multiple potential building uses including drive-thru restaurant, retail auto use and medical with flexibility on design
- Over 14,400 vehicles per day
- Dense surrounding residential population and commercial daytime traffic



EXISTING CONDITION

LAND AREA



11,813 sf

Total

PARKING



12

Spaces

FRONTAGE



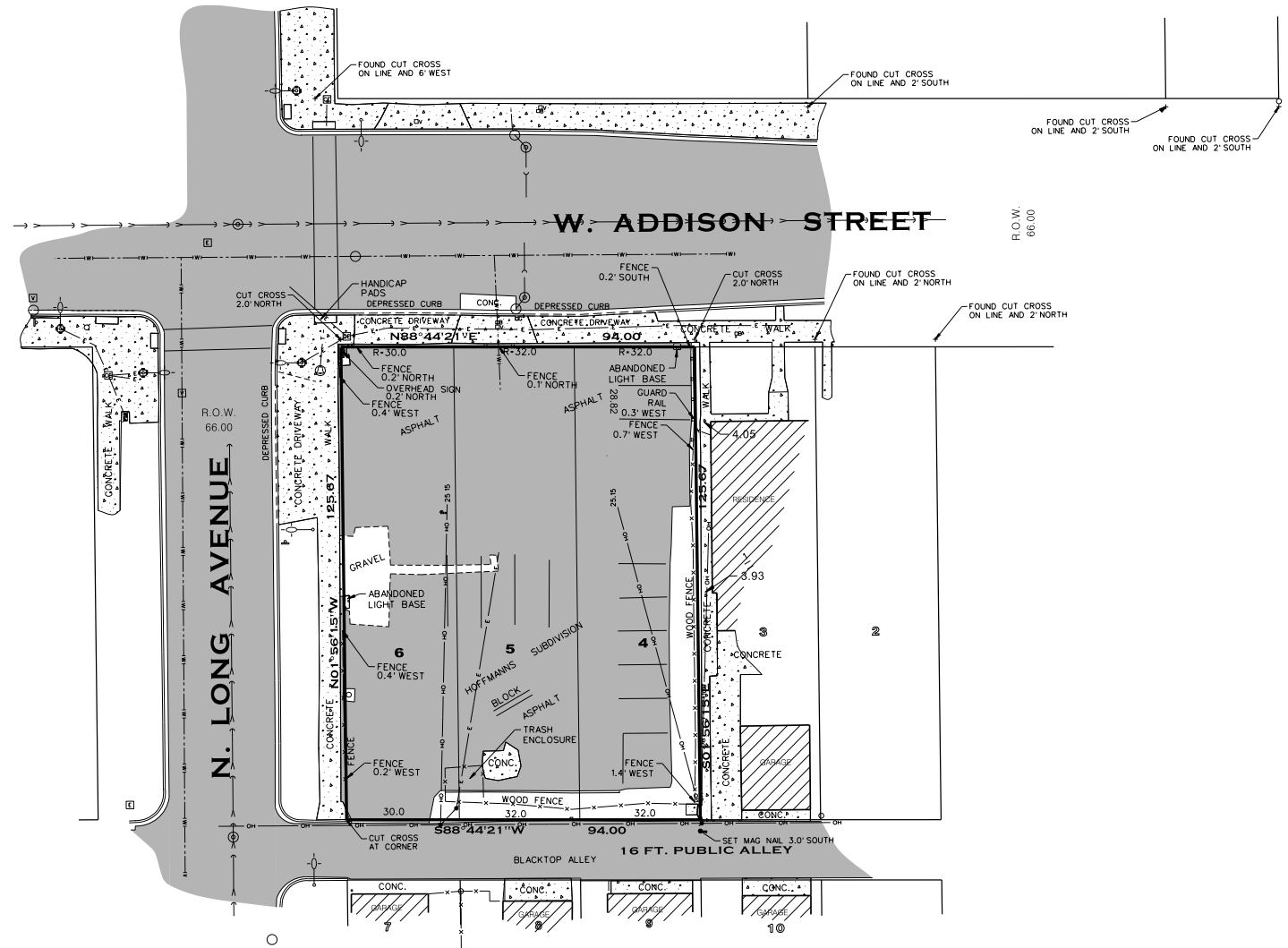
95'

on W. Addison



125'

on N. Long



CANVAS



AERIAL MAP



FOR MORE INFORMATION, PLEASE CONTACT

ANTHONY CAMPAGNI
ac@canvasrealestate.com
847.651.8669

ELAN RASANSKY
elan@canvasrealestate.com
414.380.1555

MICHAEL WALLACE
mwallace@canvasrealestate.com
614.537.2403



CANVAS