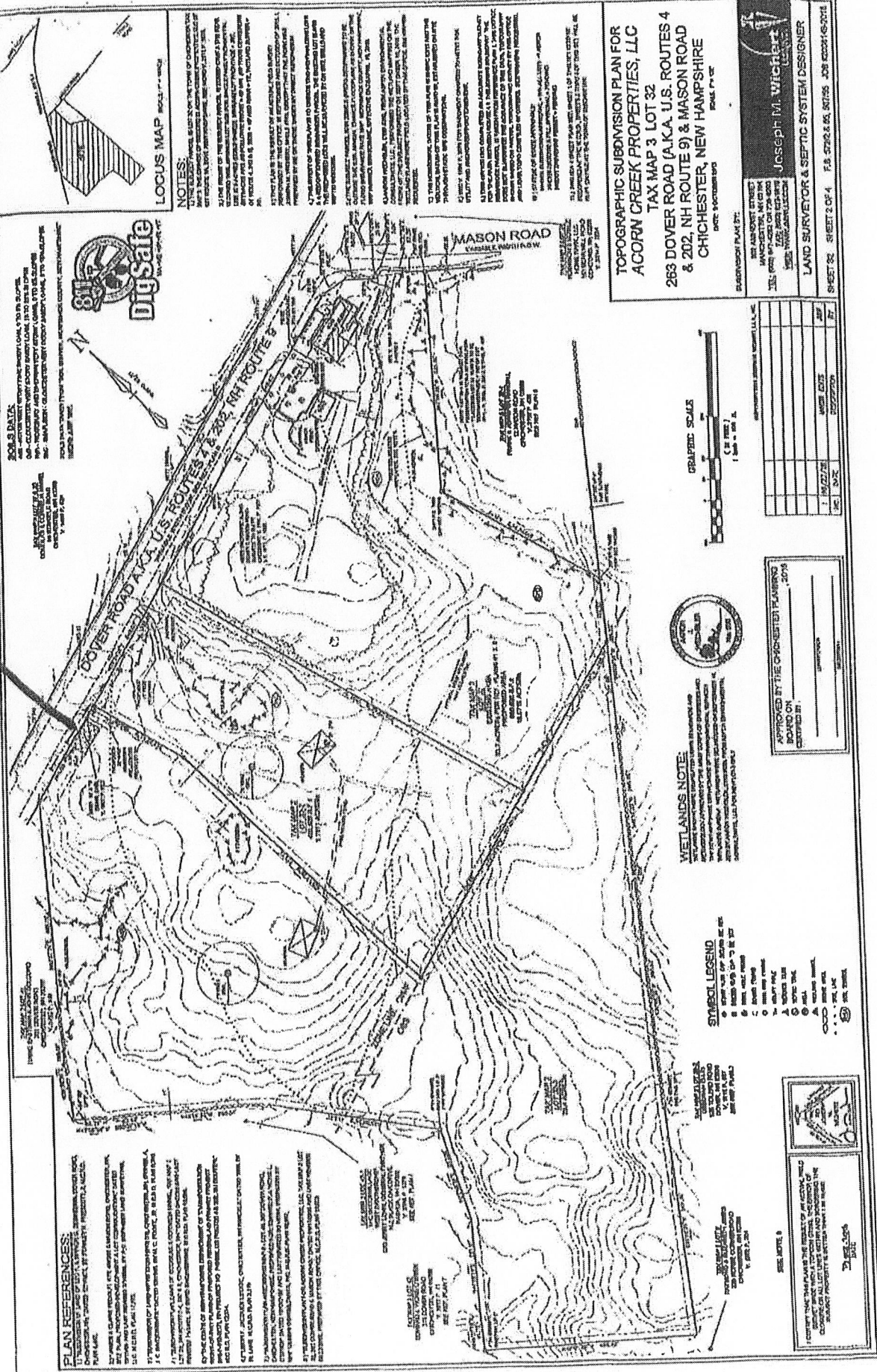


AREA OF PROPOSED ACCESS PT.



LOCUS MAP SCALE: 1" = 100'

NOTES:

1. THIS PLAN IS THE RESULT OF A SURVEY MADE BY THE SURVEYOR IN ACCORDANCE WITH THE PROVISIONS OF THE MASSACHUSETTS SURVEYING ACT, CHAPTER 270B, AS AMENDED.
2. THE SURVEY WAS MADE BY THE SURVEYOR IN ACCORDANCE WITH THE PROVISIONS OF THE MASSACHUSETTS SURVEYING ACT, CHAPTER 270B, AS AMENDED.
3. THE SURVEY WAS MADE BY THE SURVEYOR IN ACCORDANCE WITH THE PROVISIONS OF THE MASSACHUSETTS SURVEYING ACT, CHAPTER 270B, AS AMENDED.
4. THE SURVEY WAS MADE BY THE SURVEYOR IN ACCORDANCE WITH THE PROVISIONS OF THE MASSACHUSETTS SURVEYING ACT, CHAPTER 270B, AS AMENDED.
5. THE SURVEY WAS MADE BY THE SURVEYOR IN ACCORDANCE WITH THE PROVISIONS OF THE MASSACHUSETTS SURVEYING ACT, CHAPTER 270B, AS AMENDED.
6. THE SURVEY WAS MADE BY THE SURVEYOR IN ACCORDANCE WITH THE PROVISIONS OF THE MASSACHUSETTS SURVEYING ACT, CHAPTER 270B, AS AMENDED.
7. THE SURVEY WAS MADE BY THE SURVEYOR IN ACCORDANCE WITH THE PROVISIONS OF THE MASSACHUSETTS SURVEYING ACT, CHAPTER 270B, AS AMENDED.
8. THE SURVEY WAS MADE BY THE SURVEYOR IN ACCORDANCE WITH THE PROVISIONS OF THE MASSACHUSETTS SURVEYING ACT, CHAPTER 270B, AS AMENDED.
9. THE SURVEY WAS MADE BY THE SURVEYOR IN ACCORDANCE WITH THE PROVISIONS OF THE MASSACHUSETTS SURVEYING ACT, CHAPTER 270B, AS AMENDED.
10. THE SURVEY WAS MADE BY THE SURVEYOR IN ACCORDANCE WITH THE PROVISIONS OF THE MASSACHUSETTS SURVEYING ACT, CHAPTER 270B, AS AMENDED.

TOPOGRAPHIC SUBDIVISION PLAN FOR
ACORN CREEK PROPERTIES, LLC
TAX MAP 3 LOT 32
263 DOVER ROAD (A.K.A. U.S. ROUTES 4
& 202, NH ROUTE 9) & MASON ROAD
CHICHESTER, NEW HAMPSHIRE

DATE: 10/27/2018
 SCALE: 1" = 100'

DESIGNED BY: **Joseph M. Wickett**
 LAND SURVEYOR & SEPTIC SYSTEM DESIGNER

SHEET 22 OF 24 T.S. 2592 S. 05, 2018S JOB 20021-05-012

SOILS DATA:

ALL AREAS SHOWN WITHIN THE BOUNDARIES OF THIS PLAN ARE CLASSIFIED AS TO SOILS TYPE AND PERCENTAGE OF AREAS CLASSIFIED AS TO SOILS TYPE. SOILS DATA WAS OBTAINED FROM THE MASSACHUSETTS DEPARTMENT OF ENVIRONMENTAL CONSERVATION, DIVISION OF SOILS, 100 WATER STREET, SUITE 200, CONCORD, MASSACHUSETTS 03301.

811 DigSafe

CALL BEFORE YOU DIG. 811 DIGSAFE. 1-800-487-3872

WETLANDS DATA:

ALL AREAS SHOWN WITHIN THE BOUNDARIES OF THIS PLAN ARE CLASSIFIED AS TO WETLANDS TYPE AND PERCENTAGE OF AREAS CLASSIFIED AS TO WETLANDS TYPE. WETLANDS DATA WAS OBTAINED FROM THE MASSACHUSETTS DEPARTMENT OF ENVIRONMENTAL CONSERVATION, DIVISION OF WETLANDS, 100 WATER STREET, SUITE 200, CONCORD, MASSACHUSETTS 03301.

GRAPHIC SCALE

1" = 100' ±

DATE	BY
10/27/18	JMW
10/27/18	JMW

WETLANDS NOTE:

ALL WETLANDS SHOWN ON THIS PLAN WERE IDENTIFIED BY THE SURVEYOR IN ACCORDANCE WITH THE MASSACHUSETTS WETLANDS Delineation Manual, 10th Edition, 2008. THE SURVEYOR HAS CONDUCTED A VISUAL INSPECTION OF THE WETLANDS AND HAS DETERMINED THAT THE WETLANDS SHOWN ON THIS PLAN ARE ACCURATELY Delineated.

SYMBOL LEGEND

- 1. 1" = 100' ±
- 2. 1" = 100' ±
- 3. 1" = 100' ±
- 4. 1" = 100' ±
- 5. 1" = 100' ±
- 6. 1" = 100' ±
- 7. 1" = 100' ±
- 8. 1" = 100' ±
- 9. 1" = 100' ±
- 10. 1" = 100' ±

PLAN REFERENCES:

ALL AREAS SHOWN WITHIN THE BOUNDARIES OF THIS PLAN ARE CLASSIFIED AS TO SOILS TYPE AND PERCENTAGE OF AREAS CLASSIFIED AS TO SOILS TYPE. SOILS DATA WAS OBTAINED FROM THE MASSACHUSETTS DEPARTMENT OF ENVIRONMENTAL CONSERVATION, DIVISION OF SOILS, 100 WATER STREET, SUITE 200, CONCORD, MASSACHUSETTS 03301.

SEE NOTE 9

ALL WETLANDS SHOWN ON THIS PLAN WERE IDENTIFIED BY THE SURVEYOR IN ACCORDANCE WITH THE MASSACHUSETTS WETLANDS Delineation Manual, 10th Edition, 2008. THE SURVEYOR HAS CONDUCTED A VISUAL INSPECTION OF THE WETLANDS AND HAS DETERMINED THAT THE WETLANDS SHOWN ON THIS PLAN ARE ACCURATELY Delineated.