

37519-37561 SCHOOLCRAFT  
LIVONIA, MICHIGAN

HI-TECH FOR LEASE  
1,817 & 2,500 Square Feet Available



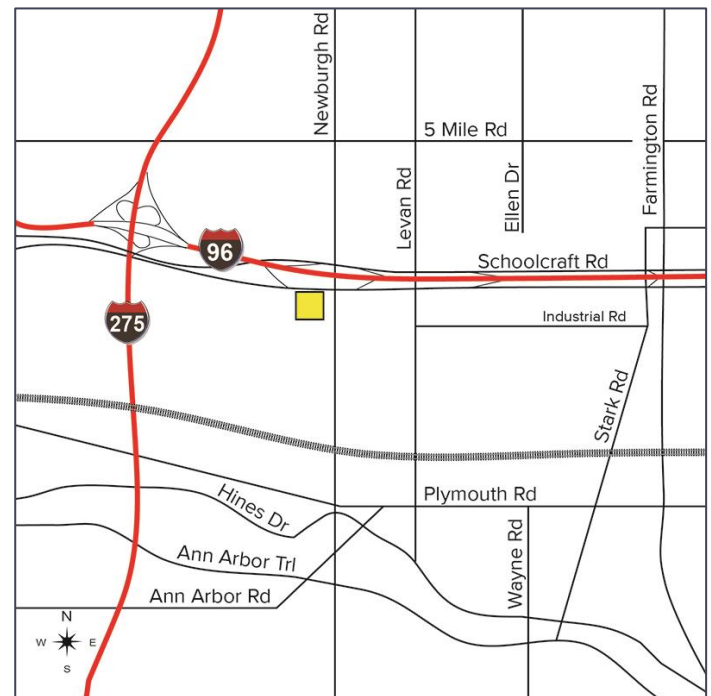
**SIGNATURE  
ASSOCIATES**  
KNOW SIGNATURE | KNOW RESULTS

## LIVONIA RESEARCH CENTER



### PROPERTY FEATURES

- 1,817 & 2,500 square feet available
- Complex professionally managed by Signature Associates
- Located just west of Newburgh and with easy access to I-96 & I-275
- Multiple office/shop configurations available and units have been recently renovated or can be finished to suit
- Aggressive lease rates



For more information, please contact:

**CHRISTOPHER M. D'ANGELO**  
(248) 948 0109  
cdangelo@signatureassociates.com

**JASON STOUGH**  
(248) 948 4180  
jstough@signatureassociates.com

**SIGNATURE ASSOCIATES**  
One Towne Square, Suite 1200  
Southfield, MI 48076  
www.signatureassociates.com

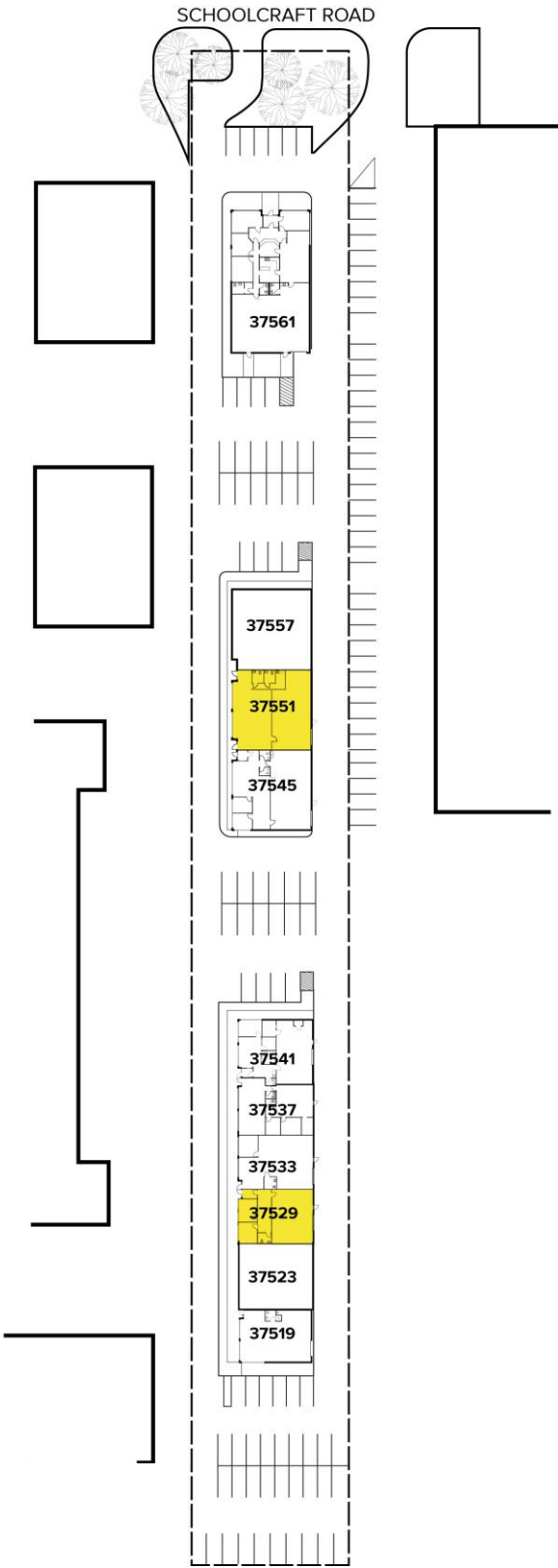
# 37519 - 37561 Schoolcraft Road - Livonia, Michigan

## Hi-Tech For Lease

1,817 & 2,500  
Square Feet  
AVAILABLE

### Site Plan

AVAILABILITY			
UNIT	TOTAL SF	OFFICE SF	RATE
37529	1,817	727	\$13.69 G + U
37551	2,500	1,250	\$13.69 G + U



For more information, please contact:  
**CHRISTOPHER M. D'ANGELO**  
(248) 948 0109  
cdangelo@signatureassociates.com

**JASON STOUGH**  
(248) 948 4180  
jstough@signatureassociates.com

**SIGNATURE ASSOCIATES**  
One Towne Square, Suite 1200  
Southfield, MI 48076  
www.signatureassociates.com

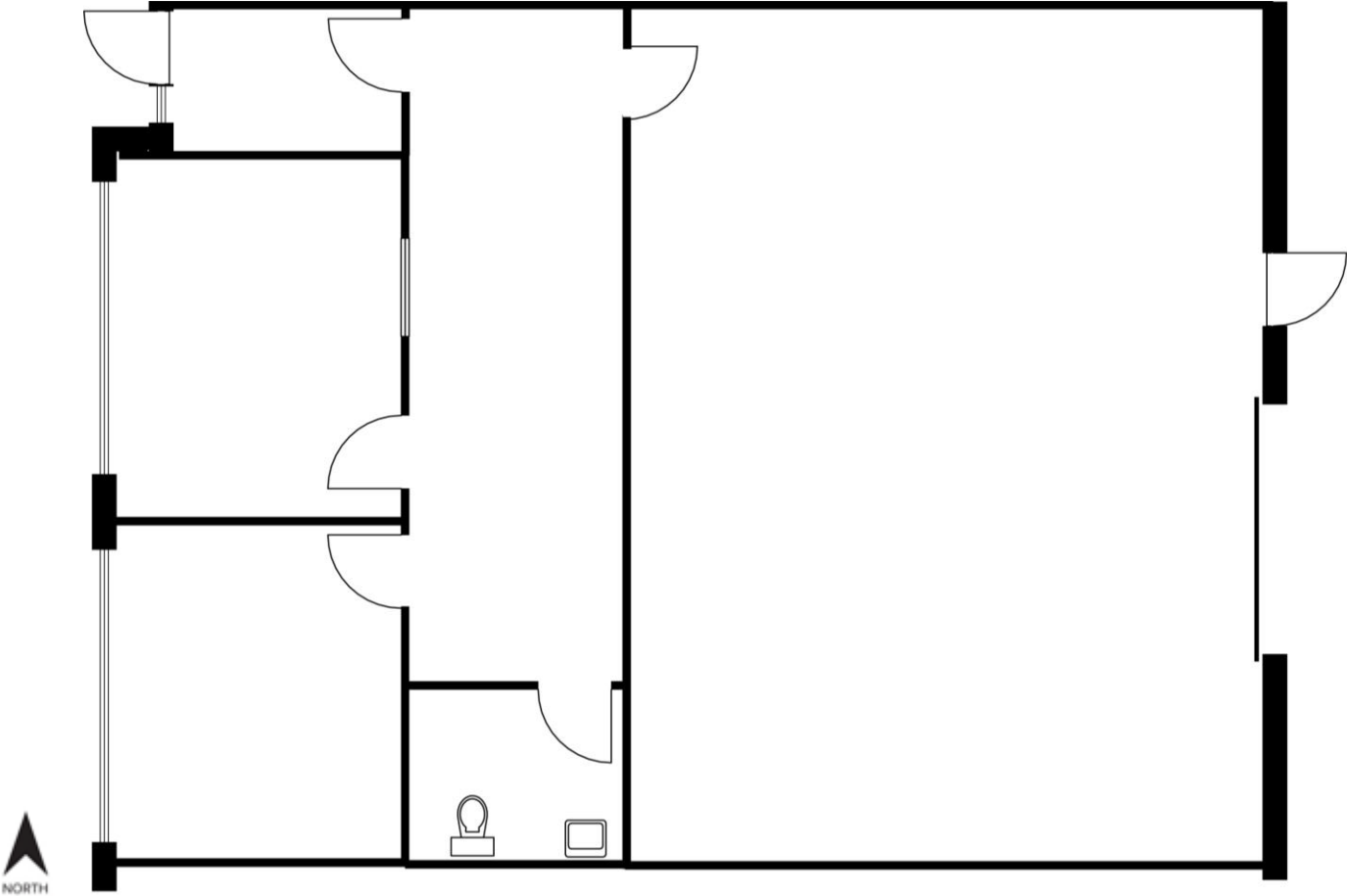
# 37519 - 37561 Schoolcraft Road - Livonia, Michigan

## Hi-Tech For Lease

1,817 & 2,500  
Square Feet  
AVAILABLE

### Floor Plan

AVAILABILITY			
UNIT	TOTAL SF	OFFICE SF	RATE
37529	1,817	727	\$13.69 G + U



For more information, please contact:

**CHRISTOPHER M. D'ANGELO**  
(248) 948 0109  
cdangelo@signatureassociates.com

**JASON STOUGH**  
(248) 948 4180  
jstough@signatureassociates.com

**SIGNATURE ASSOCIATES**  
One Towne Square, Suite 1200  
Southfield, MI 48076  
www.signatureassociates.com

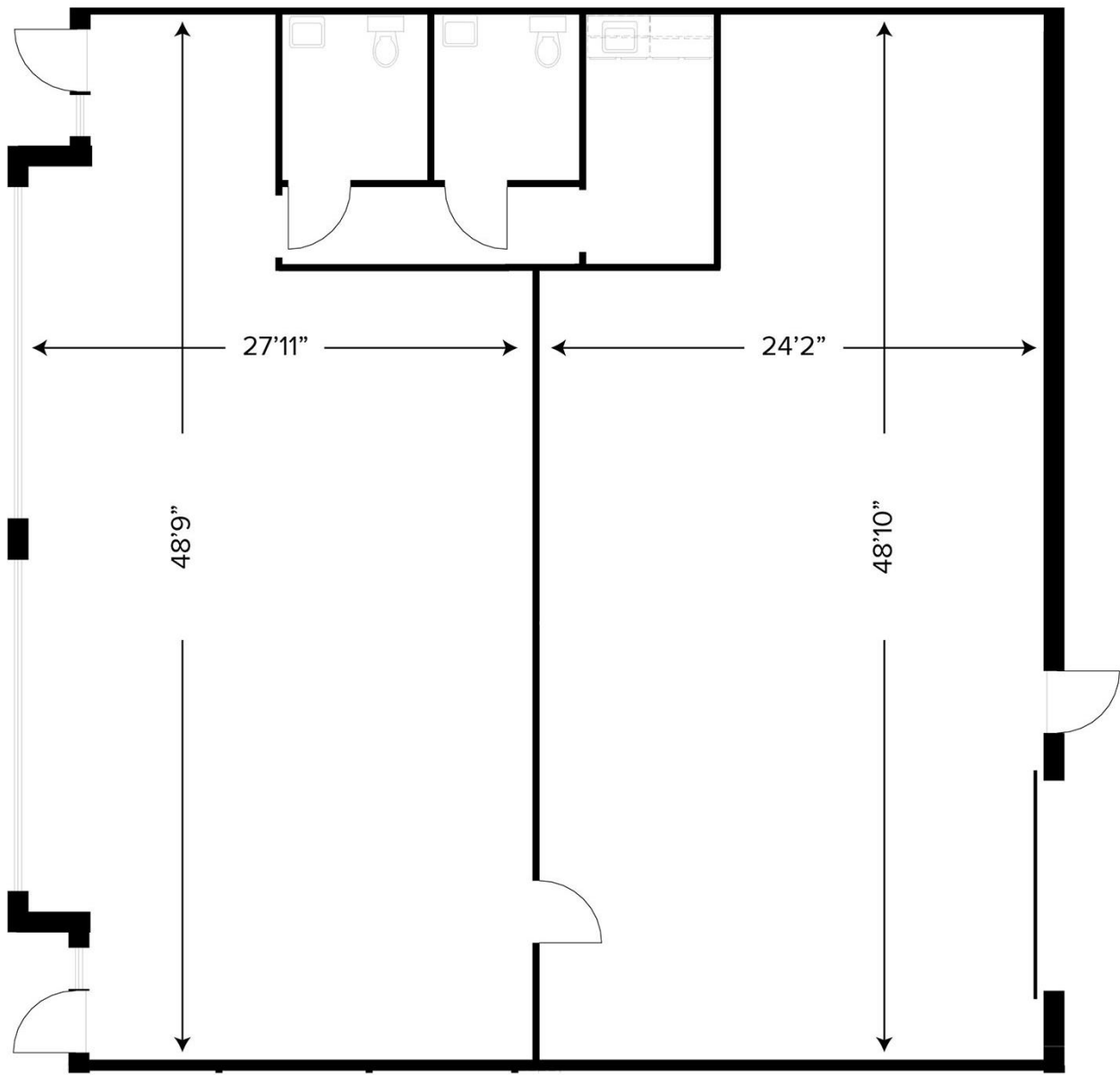
# 37519 - 37561 Schoolcraft Road - Livonia, Michigan

## Hi-Tech For Lease

1,817 & 2,500  
Square Feet  
AVAILABLE

### Floor Plan

AVAILABILITY			
UNIT	TOTAL SF	OFFICE SF	RATE
37551	2,500	1,250	\$13.69 G + U



For more information, please contact:

**CHRISTOPHER M. D'ANGELO**  
(248) 948 0109  
cdangelo@signatureassociates.com

**JASON STOUGH**  
(248) 948 4180  
jstough@signatureassociates.com

**SIGNATURE ASSOCIATES**  
One Towne Square, Suite 1200  
Southfield, MI 48076  
www.signatureassociates.com

Information is subject to verification and no liability for errors or omissions is assumed. Price is subject to change and listing withdrawal.