



## Pad Ready Site in Saluda, SC

307 N. Jennings Street, Saluda, SC 29138

### PROPERTY HIGHLIGHTS

- » A Pad Ready high visibility corner lot directly across from the newer McDonald's on the corner of Travis Avenue and N Jennings Street
- » This corner is the crossing of two main thoroughfares in Saluda, SC, the County Seat for the 451 square mile Saluda County
- » This site is ready for uses including restaurant and retail
- » .68 ac lot
- » Highway Commercial Zoning (City of Saluda)
- » All utilities available
- » Detention shared with O'Reilly's

TRAFFIC COUNTS	VPD
Travis Avenue	6,326
N Jennings Street	5,127

DEMOGRAPHICS	1 Mile	3 Mile	5 Mile
Population 2021	3,660	4,985	7,186
Avg. Household Income 2021	\$54,286	\$55,281	\$55,697

### CONTACT

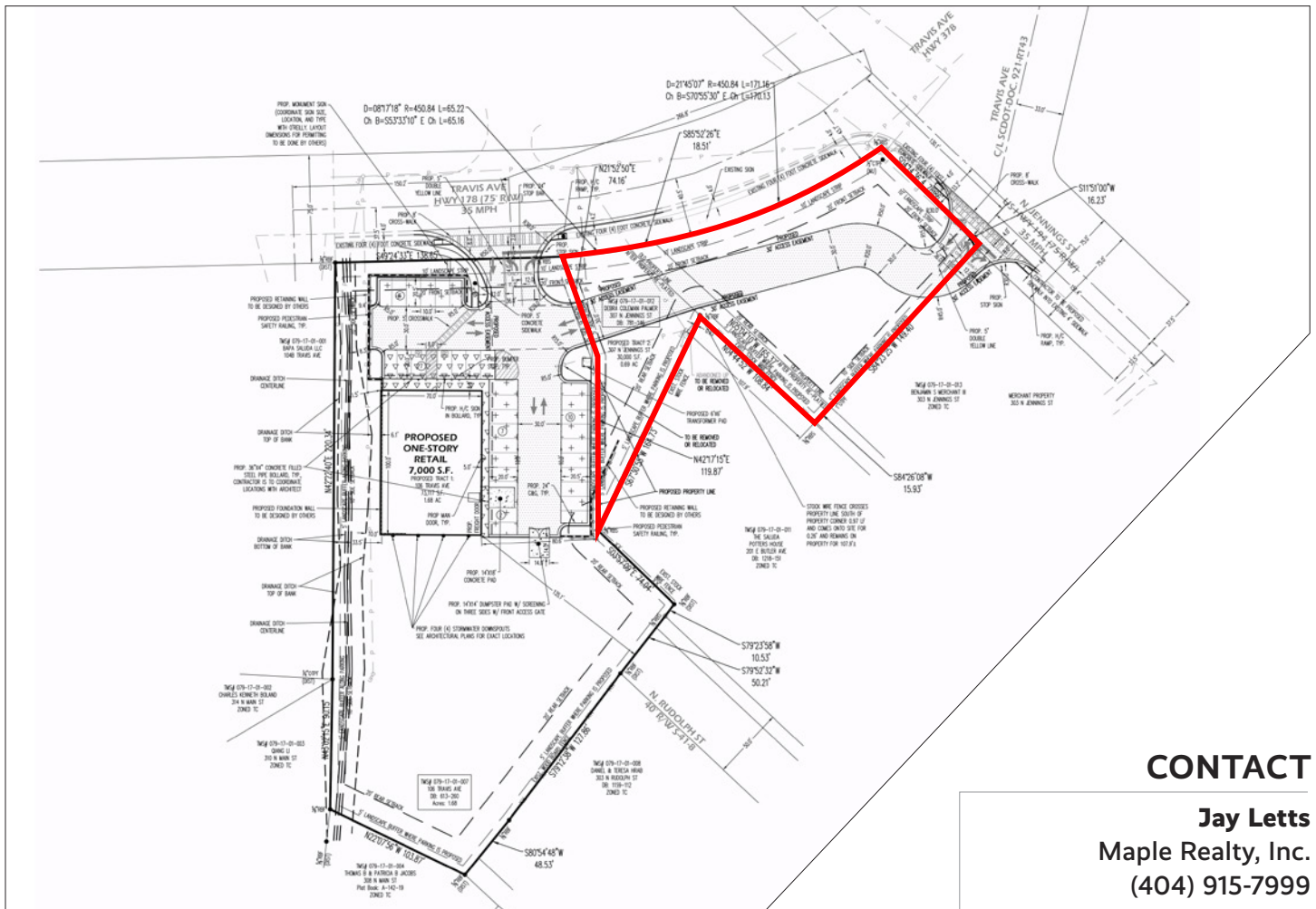
**Jay Letts**  
 Maple Realty, Inc.  
 (404) 915-7999  
 Jay@MapleRealty.net

**FOR SALE \$275,000**

# Market Aerial



**.68 ACRE COMMERCIAL LOT | \$275,000**



## CONTACT

**Jay Letts**  
 Maple Realty, Inc.  
 (404) 915-7999  
[Jay@MapleRealty.net](mailto:Jay@MapleRealty.net)