



Frank & Anita Lambert
PREMIER SOTHEBYS INTL REALTY
frank.lambert@premiersir.com, anita.lambert@premiersir.com
 Cell: 941-920-1500, 941-920-1501
<http://www.thefranklambertteam.com>

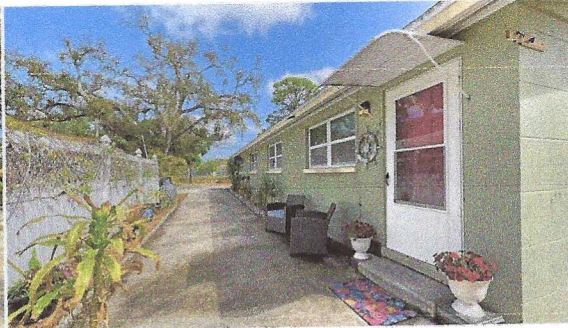


FRONT UNIT Pix

ML #: A4685678

List Price: \$769,000

Address: 1860 7TH ST, SARASOTA, FL 34236



Income Property Across From Gillespie Park ... 100 year old neighborhood - Gillespie Park - f...



Rear unit: This STAGED 2 bedroom, 1 bath res...THIS FRONT UNIT has long term tenant. It is ...



Downtown Sarasota Duplex Investment prop... 10 acre city run Gillespie Park with tennis, ba...



FRONT UNIT has large 15'8" x 12'8" living ro... FRONT UNIT has large 15'8" x 12'8" living ro...



FRONT UNIT has welcoming 11'x 9' eat in kitc...FRONT UNIT has welcoming 11'x 9' eat in kitc...



FRONT UNIT HAS large bright bedrooms. Pri... FRONT UNIT HAS large bright bedrooms. Pri...



FRONT UNIT HAS large bright bedrooms. Pri... FRONT UNIT bedroom is 10'6" x11' and has a...



FRONT UNIT bedroom is 10'6" x11' and has a... FRONT UNIT bathroom is 5' x 7'6" and has tu...



Gillespie Park Duplex Opportunity With Stabl... Enjoy an outdoor active lifestyle at Gillespie P...



Enjoy an outdoor active lifestyle WITH YOUR ... City of Sarasota gives you a small city feel bu...



Enjoy an outdoor active lifestyle at Gillespie P...10 acre Gillespie Park has tennis courts whic...