

RENO JONES PROFESSIONAL CENTRE

5052 S. Jones Blvd | Las Vegas, Nevada 89118



PROPERTY DETAILS

○ Rate: \$1.75 PSF/NNN

*Introductory Rate

○ Available Spaces:

Suite 110 — 1,819 RSF

Leased ~~Suite 115 — 2,046 RSF~~

~~Suite 110 & 115 — 3,865 RSF~~

○ Building signage available

○ Quick access to Spring Valley, Southern Hills
& St. Rose San Martin Hospital campuses

BRUCE FOLLMER

President / Broker | Lic.# B.0018023

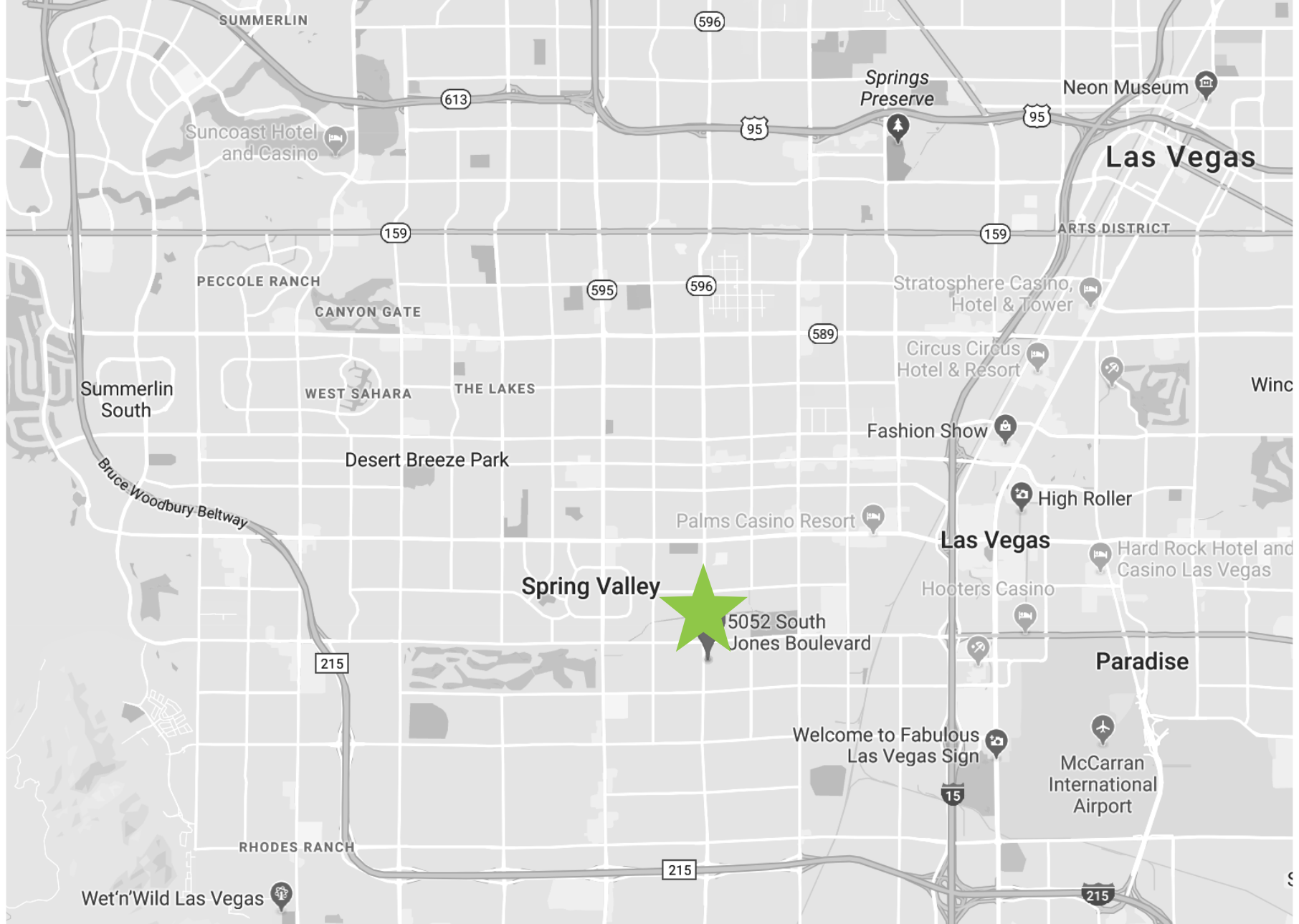
JUSTIN MICHAELS

Vice President | Lic.# S.0068221

📍 1129 S. Casino Center Blvd. | Las Vegas, NV 89104 📞 702.347.7777 🌐 mfrenv.com



Disclaimer: The information above has been obtained from sources believed reliable. While we do not doubt its accuracy, we have not verified it and make no guarantee, warranty or representation about it. It is your responsibility to independently confirm its accuracy and completeness. Any projections, opinions, assumptions or estimates used are for example only and do not represent the current or future performance of the property. The value of this transaction to you depends on tax and other factors which should be evaluated by your tax, financial and legal advisors. You and your advisors should conduct a careful, independent investigation of the property to determine for your satisfaction the suitability of the property for your needs. This information has been prepared exclusively for the clients of Michaels Follmer Real Estate (MFRE) and is confidential. It is the property of MFRE, and reproduction of any portion without the written consent of MFRE is strictly prohibited.



BRUCE FOLLMER

President / Broker | Lic.# B.0018023

JUSTIN MICHAELS

Vice President | Lic.# S.0068221

📍 1129 S. Casino Center Blvd. | Las Vegas, NV 89104 📞 702.347.7777 🌐 mfrenv.com



Disclaimer: The information above has been obtained from sources believed reliable. While we do not doubt its accuracy, we have not verified it and make no guarantee, warranty or representation about it. It is your responsibility to independently confirm its accuracy and completeness. Any projections, opinions, assumptions or estimates used are for example only and do not represent the current or future performance of the property. The value of this transaction to you depends on tax and other factors which should be evaluated by your tax, financial and legal advisors. You and your advisors should conduct a careful, independent investigation of the property to determine for your satisfaction the suitability of the property for your needs. This information has been prepared exclusively for the clients of Michaels Follmer Real Estate (MFRE) and is confidential. It is the property of MFRE, and reproduction of any portion without the written consent of MFRE is strictly prohibited.



BRUCE FOLLMER

President / Broker | Lic.# B.0018023

JUSTIN MICHAELS

Vice President | Lic.# S.0068221

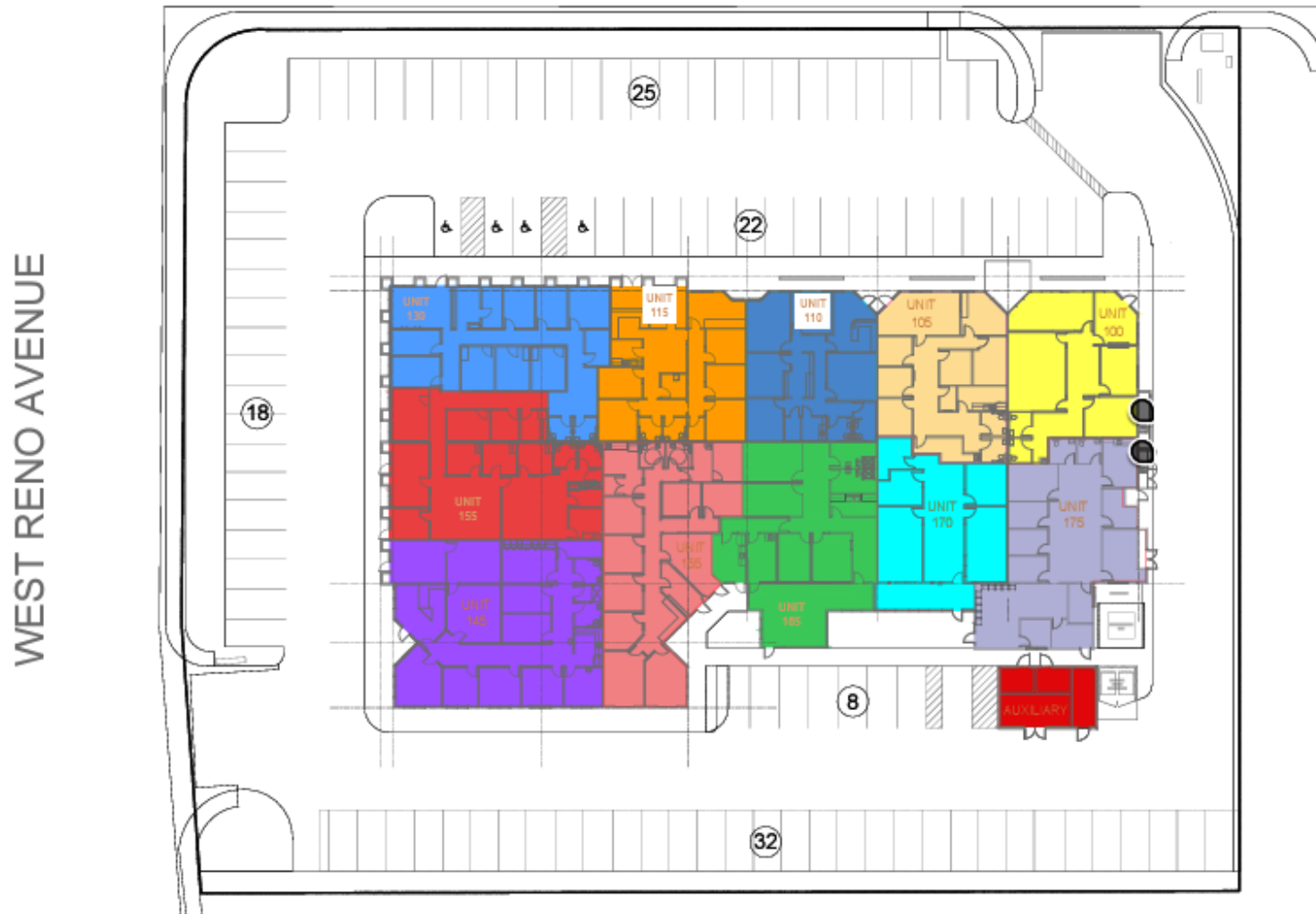
📍 1129 S. Casino Center Blvd. | Las Vegas, NV 89104 📞 702.347.7777 🌐 mfrenv.com



Disclaimer: The information above has been obtained from sources believed reliable. While we do not doubt its accuracy, we have not verified it and make no guarantee, warranty or representation about it. It is your responsibility to independently confirm its accuracy and completeness. Any projections, opinions, assumptions or estimates used are for example only and do not represent the current or future performance of the property. The value of this transaction to you depends on tax and other factors which should be evaluated by your tax, financial and legal advisors. You and your advisors should conduct a careful, independent investigation of the property to determine for your satisfaction the suitability of the property for your needs. This information has been prepared exclusively for the clients of Michaels Follmer Real Estate (MFRE) and is confidential. It is the property of MFRE, and reproduction of any portion without the written consent of MFRE is strictly prohibited.

FLOOR PLAN

SOUTH JONES BOULEVARD



BRUCE FOLLMER

President / Broker | Lic.# B.0018023

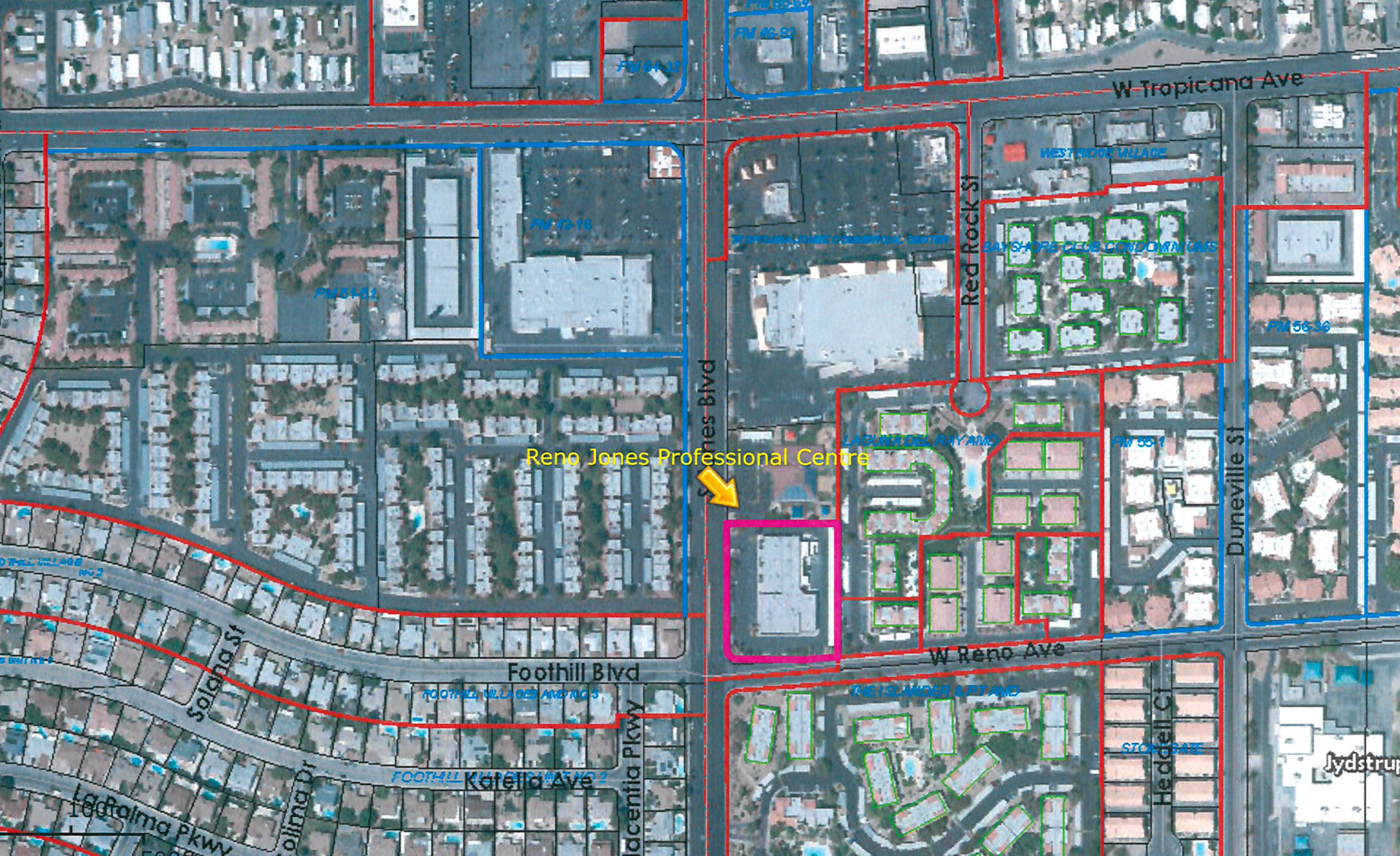
JUSTIN MICHAELS

Vice President | Lic.# S.0068221

📍 1129 S. Casino Center Blvd. | Las Vegas, NV 89104 📞 702.347.7777 🌐 mfrenv.com



Disclaimer: The information above has been obtained from sources believed reliable. While we do not doubt its accuracy, we have not verified it and make no guarantee, warranty or representation about it. It is your responsibility to independently confirm its accuracy and completeness. Any projections, opinions, assumptions or estimates used are for example only and do not represent the current or future performance of the property. The value of this transaction to you depends on tax and other factors which should be evaluated by your tax, financial and legal advisors. You and your advisors should conduct a careful, independent investigation of the property to determine for your satisfaction the suitability of the property for your needs. This information has been prepared exclusively for the clients of Michaels Follmer Real Estate (MFRE) and is confidential. It is the property of MFRE, and reproduction of any portion without the written consent of MFRE is strictly prohibited.



Reno Jones Professional Centre



BRUCE FOLLMER

President / Broker | Lic.# B.0018023

JUSTIN MICHAELS

Vice President | Lic.# S.0068221

📍 1129 S. Casino Center Blvd. | Las Vegas, NV 89104 📞 702.347.7777 🌐 mfrenv.com



Disclaimer: The information above has been obtained from sources believed reliable. While we do not doubt its accuracy, we have not verified it and make no guarantee, warranty or representation about it. It is your responsibility to independently confirm its accuracy and completeness. Any projections, opinions, assumptions or estimates used are for example only and do not represent the current or future performance of the property. The value of this transaction to you depends on tax and other factors which should be evaluated by your tax, financial and legal advisors. You and your advisors should conduct a careful, independent investigation of the property to determine for your satisfaction the suitability of the property for your needs. This information has been prepared exclusively for the clients of Michaels Follmer Real Estate (MFRE) and is confidential. It is the property of MFRE, and reproduction of any portion without the written consent of MFRE is strictly prohibited.